

DEFENDER 110 ULTRA RACK INSTALL GUIDE

RACK ASSEMBLY

ATTENTION

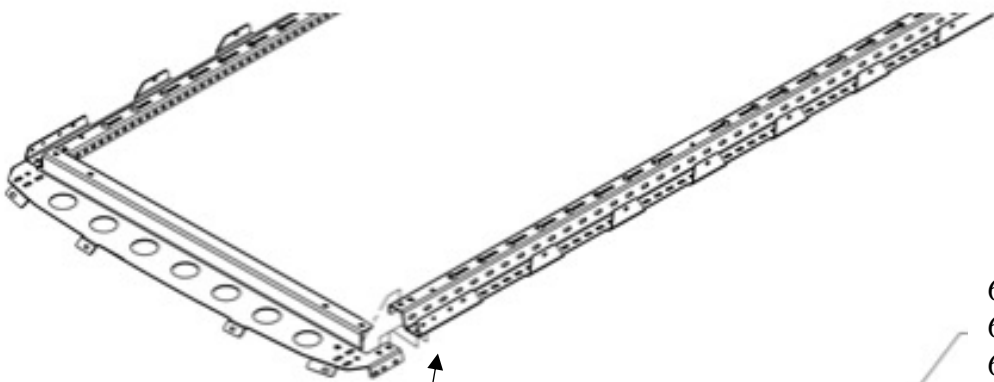
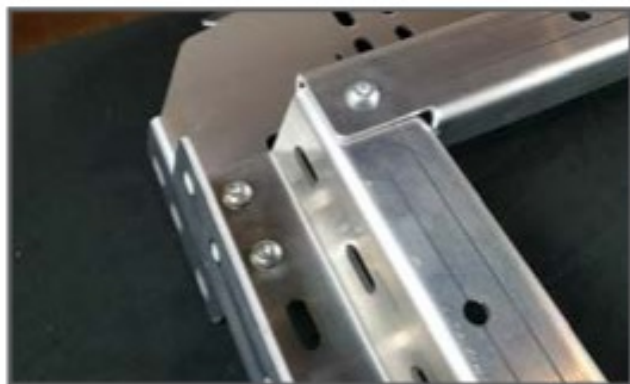
When assembling the Mule Ultra Rack, remember to hand-tighten all bolts relatively loose until the very end of the install. This allows everything to fit into place before everything is tightened down.

1 OEM ROOF RACK REMOVAL

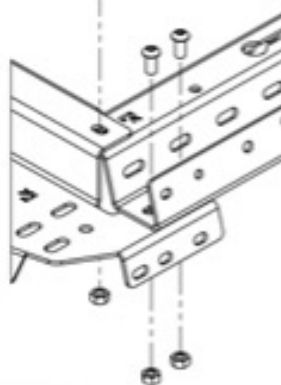
Remove the OEM roof rack if equipped from the vehicle. Mounts will be reused from the factory rack do not discard.

2 FRONT AND SIDE BRACES MOUNTING

Lay out the front and side braces as shown. Mount the braces together using the 5/16" bolts and nuts.



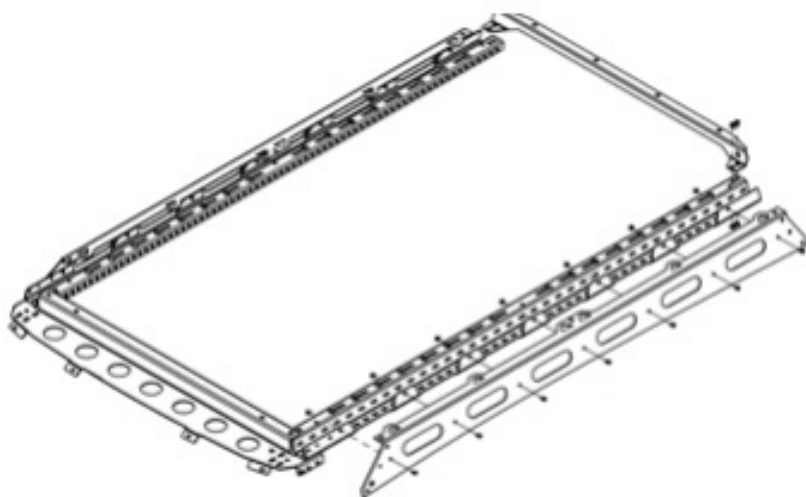
6x 5/16-18 x 0.75 Button Head
6x 5/16-18 Nyloc
6x 5/16 Washers



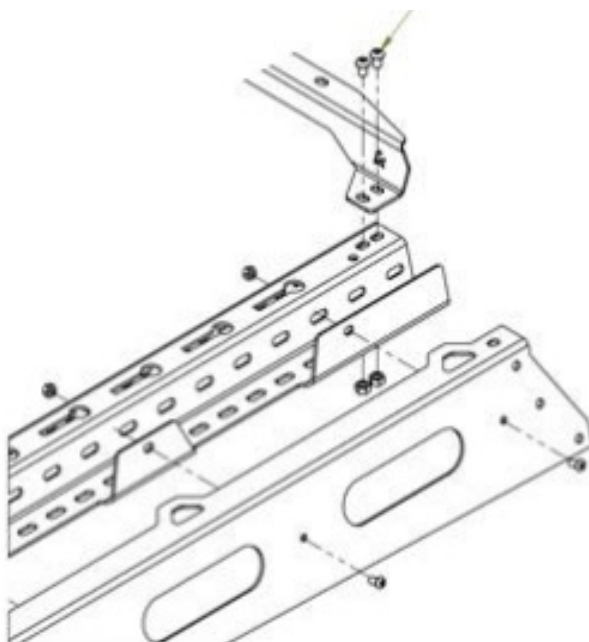
Widest section will be the front
on side braces

3 REAR BRACE AND SIDE FASCIA MOUNTING

Attach the rear brace and side fascias shown using 1/4" and 5/16" bolts on both sides as shown below.



16x 1/4-20 x 0.50 Button Head
16x 1/4-20 Nyloc
16x 1/4 Washers



CONTINUED

Insert the provided panels into the rear openings based on the vehicles accessories if equipped. Panels for the accessories will also help locate the rack during install.



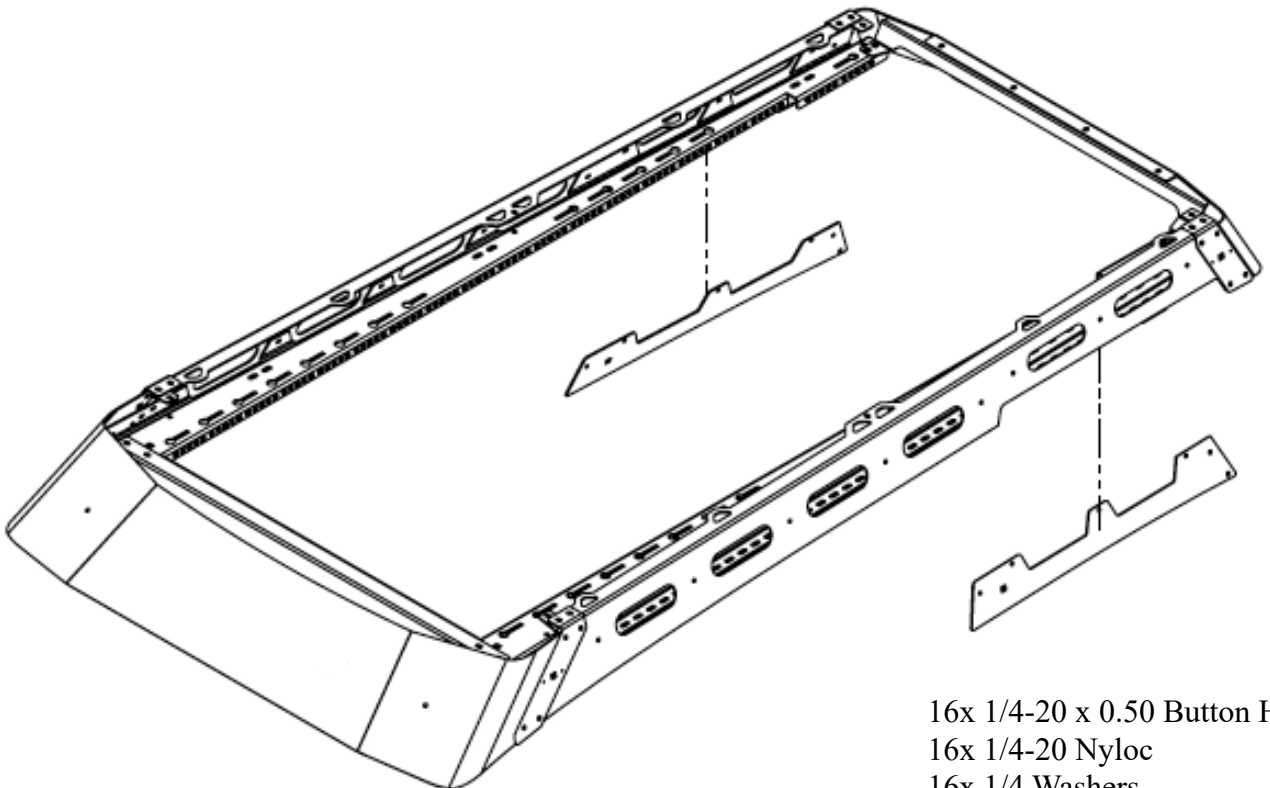
No Accessories



Land Rover Side Box

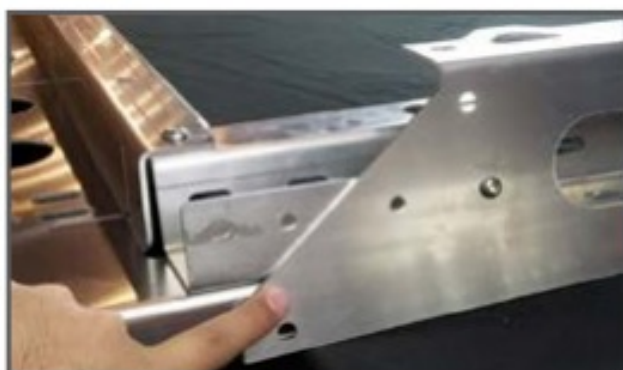


Land Rover Ladder



16x 1/4-20 x 0.50 Button Head
16x 1/4-20 Nyloc
16x 1/4 Washers

SIDE FASCIA CONTINUED

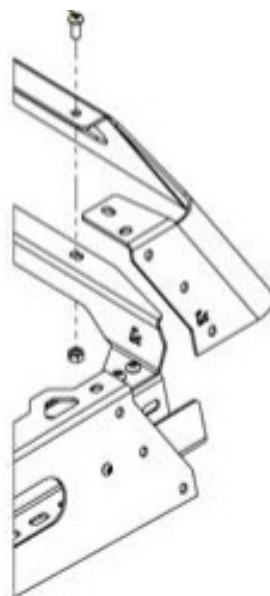


4 REAR FASCIA MOUNTING

Attach rear fascia as shown with 5/16" bolts and nuts.



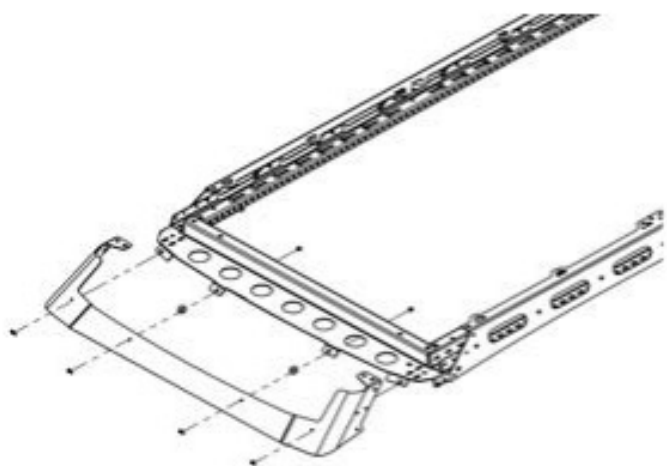
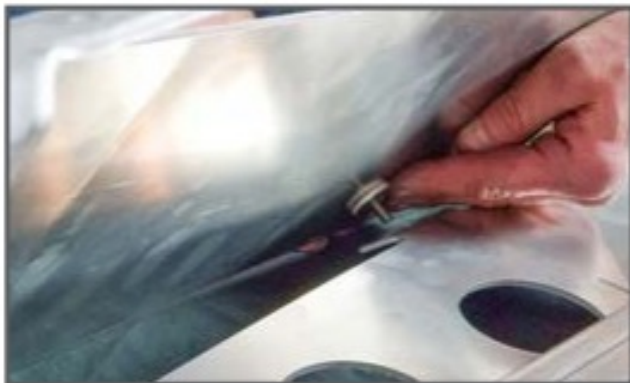
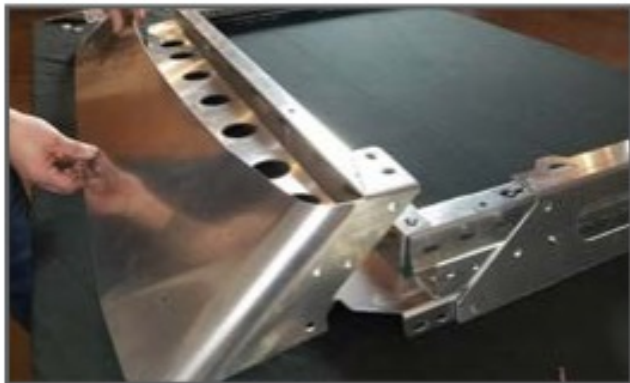
4x 5/16-18 x 0.75 Button Head
4x 5/16-18 Nyloc
4x 5/16 Washers



5 FRONT FASCIA MOUNTING

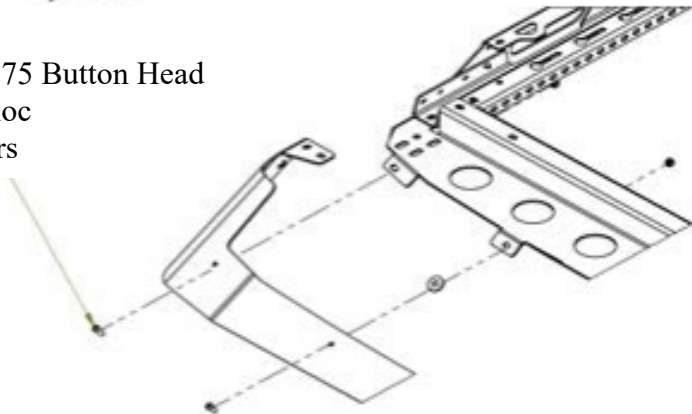
Attach the front fascia using 1/4" bolts. Use the provided round spacers to adjust the front fascia to match the curve of the roof when test fitting the roof rack during mounting.

NOTE: IF YOU HAVE A FASCIA WITH A LIGHT BAR CUTOUT, WE RECOMMEND INSTALLING THE LIGHT BAR PRIOR TO MOUNTING THE ROOF RACK.



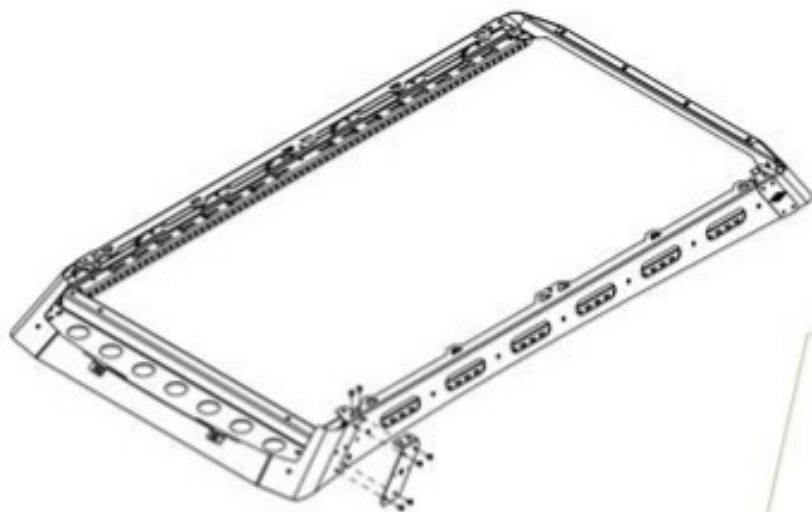
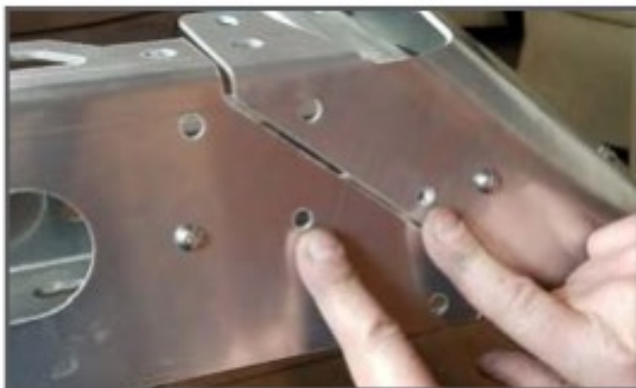
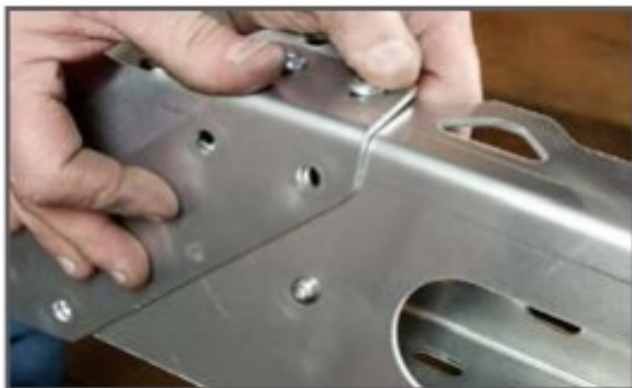
Install the weather stripping to the bottom of front fascia as shown and trim any excess.

- 4x 1/4-20 x 0.75 Button Head
- 4x 1/4-20 Nyloc
- 4x 1/4 Washers

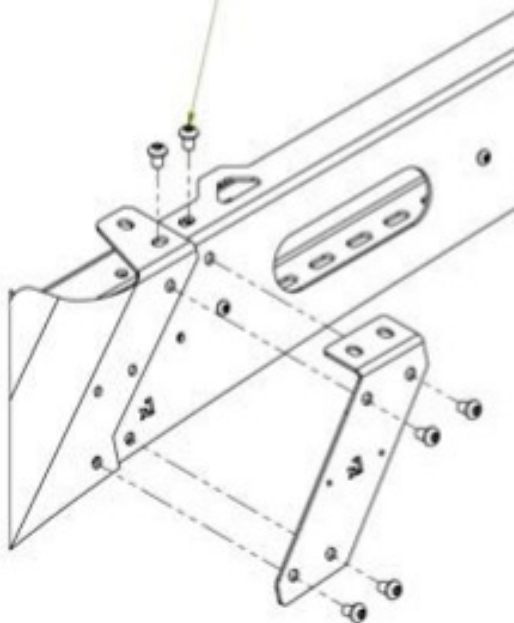


6 SEAM JOINERS

Mount both front and rear seam joiners with 5/16" hardware as shown top and bottom.

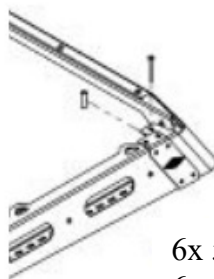
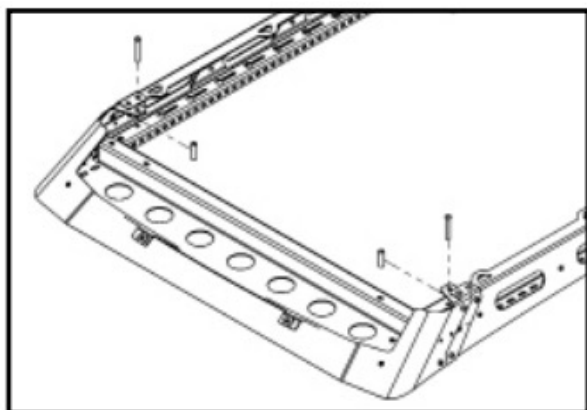
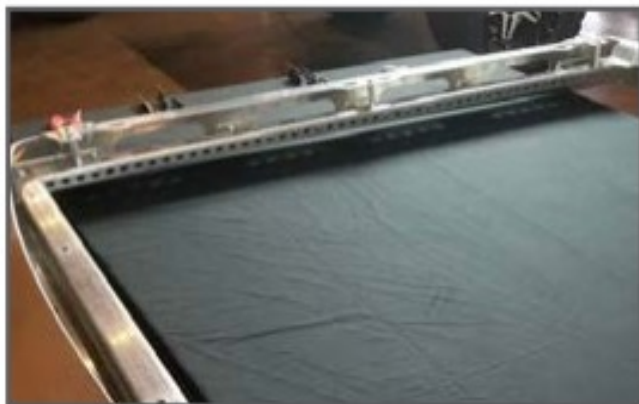


24x 5/16-18 x 0.75 Button Head
24x 5/16-18 Nyloc
24x 5/16 Washers

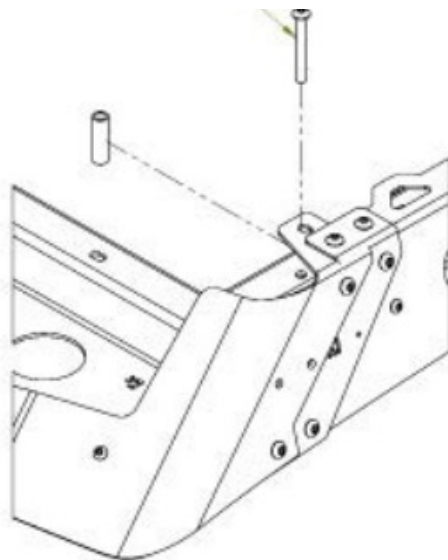
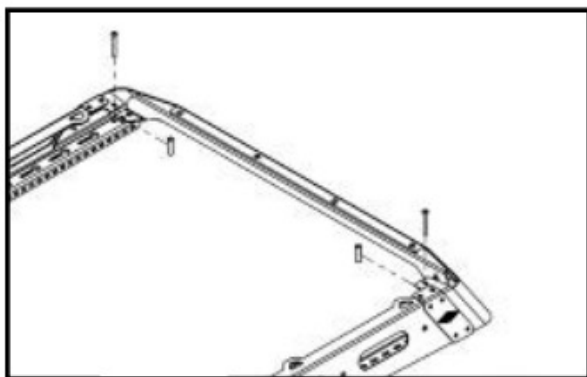


7 REINFORCEMENT SPACERS

Attach reinforcement spacers as shown on all 6 hole locations (3 each side) with the provided hardware.

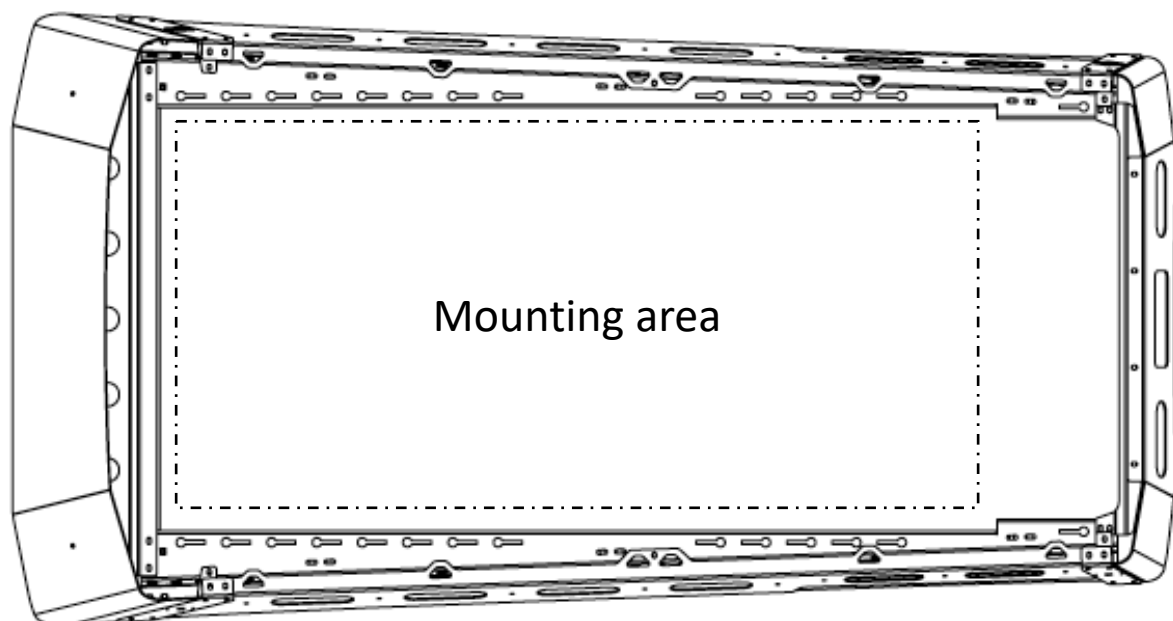
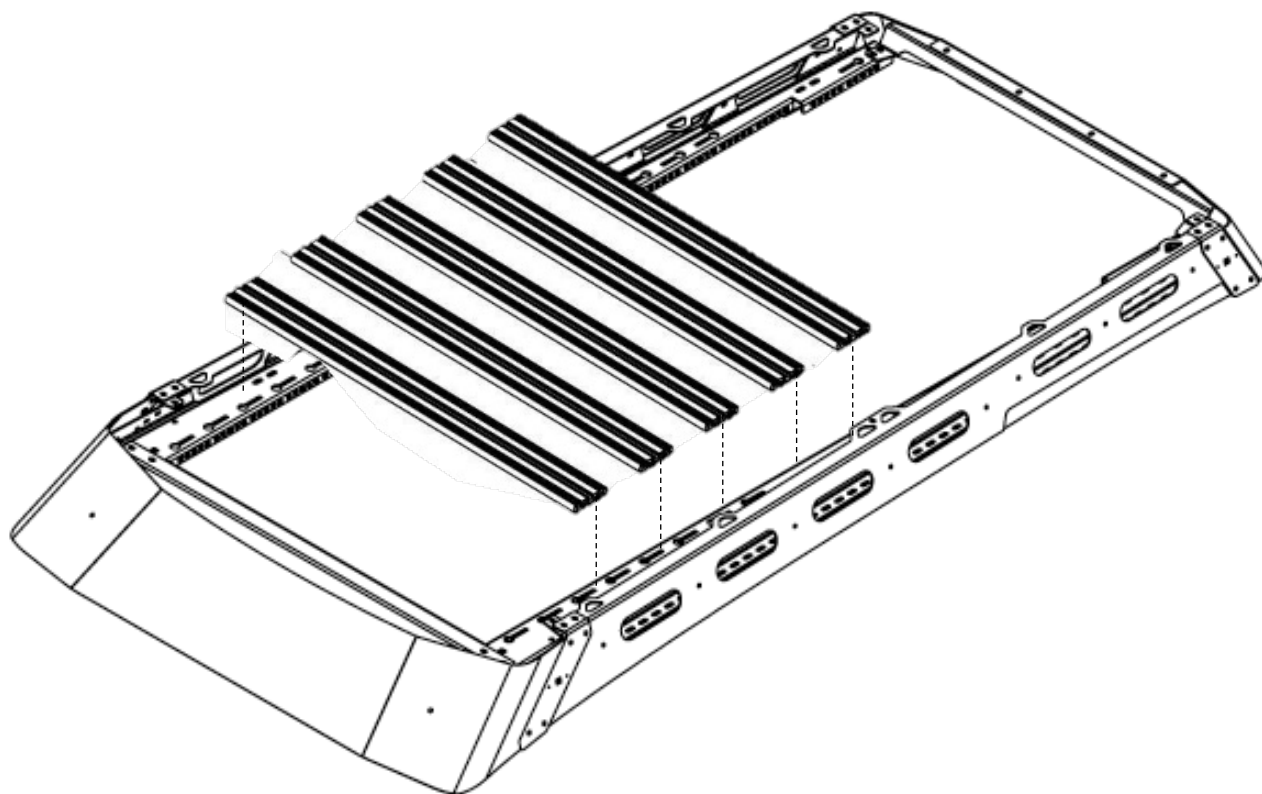


6x 5/16-18 x 2.5 Button Head
6x 5/16-18 Nyloc
6x 5/16 Washers



8 LOAD BAR INSTALLATION

Insert the load bars at your desired spacing and mount to the rack using the provided 5/16" hardware. Leave hardware loose for adjustment and tighten once the rack is square.



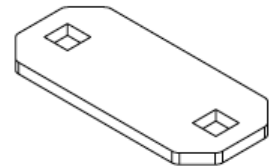
ROOF RACK INSTALLATION

9 ROOF RACK MOUNTING

Place the roof rack onto vehicle with help of a friend and align with each bracket. Use the provided 5/16" bolts and washers for each mount hole location and tighten down roof rack to each bracket as shown below. Spacer kit may be used to level and adjust the roof rack. Tighten all hardware once completed.

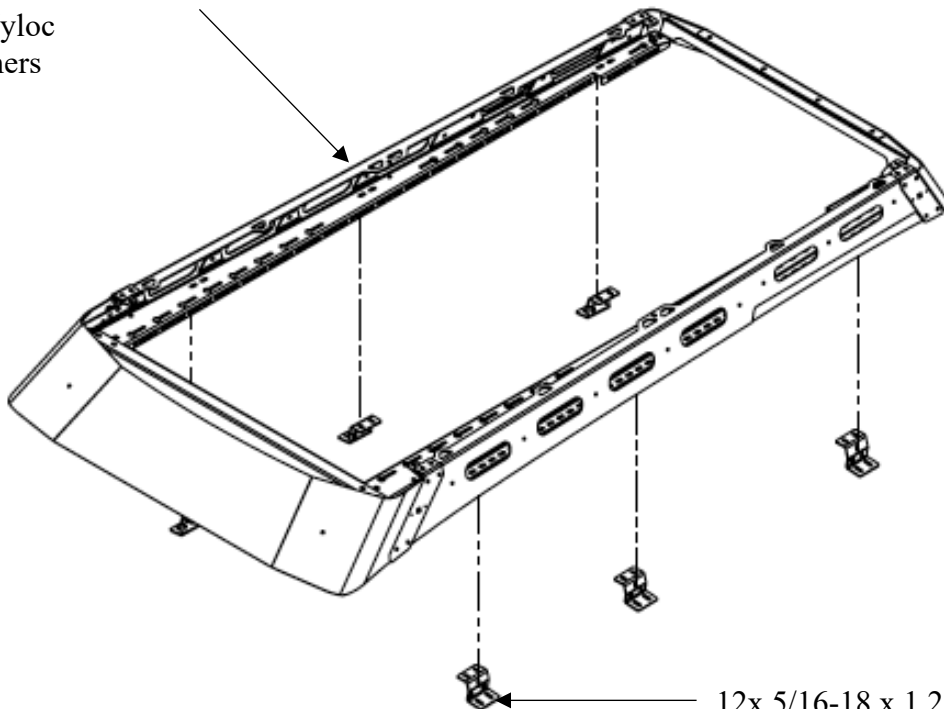


Reuse the provided OEM rack mounts if equipped or the provided spacers and 5/16 carriage bolts



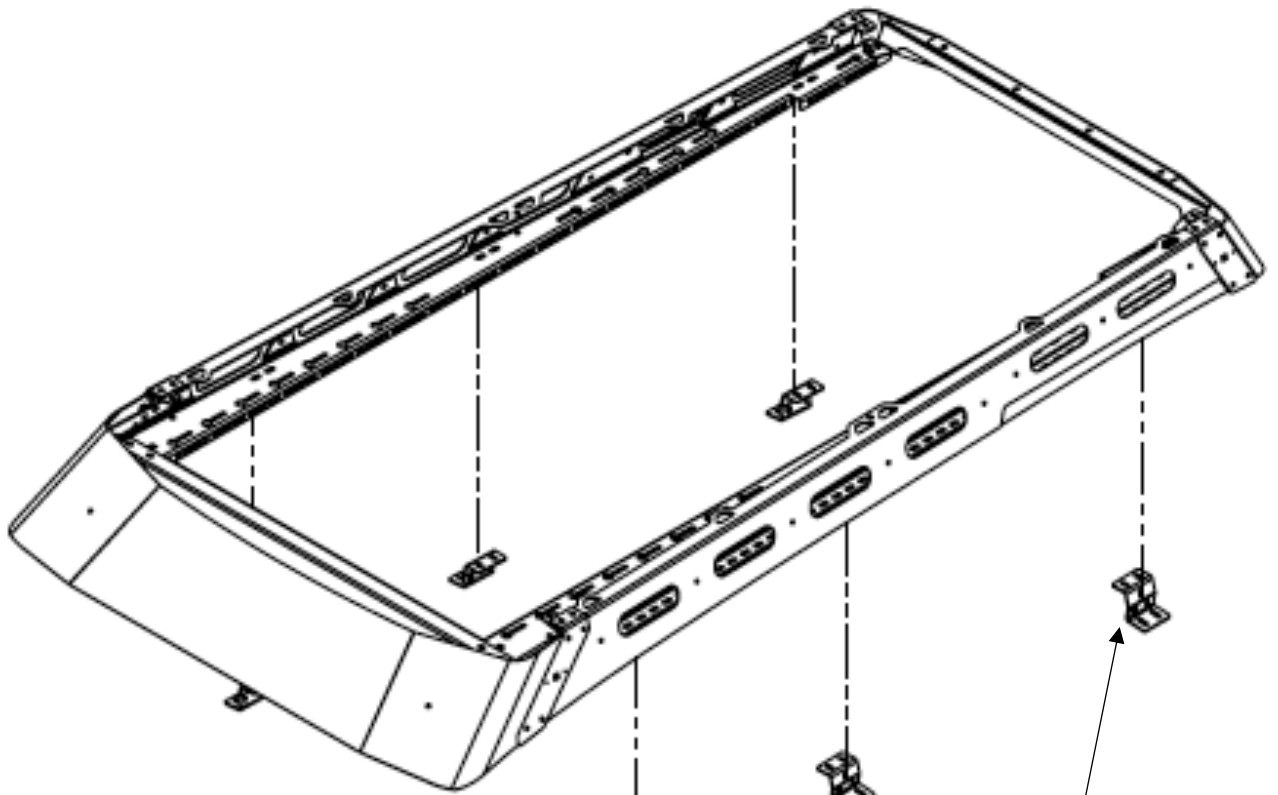
Carriage bolt mounts

12x 5/16-18 x 0.75 Button Head
12x 5/16-18 Nyloc
12x 5/16 Washers



12x 5/16-18 x 1.25 Carriage Bolt
12x 5/16-18 Nyloc
12x 5/16 Washers

Mount Diagram next page



Front



Mid



Rear

Driver Side Example Shown

