

# GX INTERNAL DOOR BRACE

---

Remove the interior trim panel by removing the hardware behind the storage pockets and pulling the ends away from the door. Pull back the plastic cover to gain access to the hardware. Unbolt the



Remove the center section



Unclip the sides, pulling towards the middle of the door



Hardware Locations



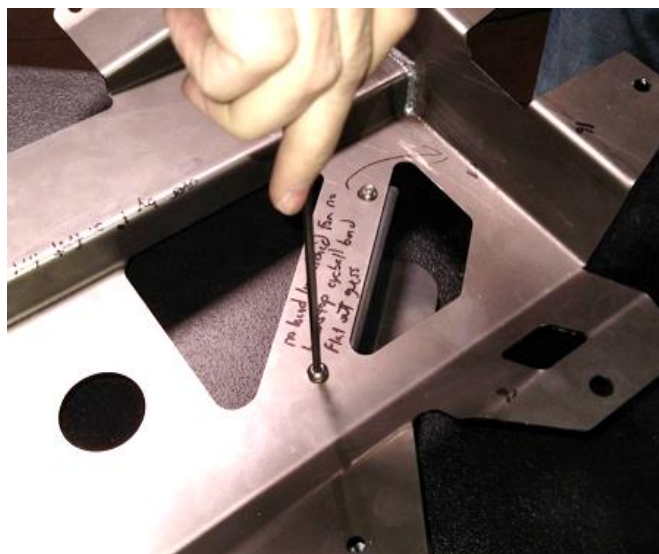
Hidden clip location

Start by removing part of the plastic rib located at 7 1/2" to allow for bolt clearance. Measure from the side as shown and clear a section level with the panel. Also remove the 2 OEM black tabs on the lower edge of the door for the tool kit.





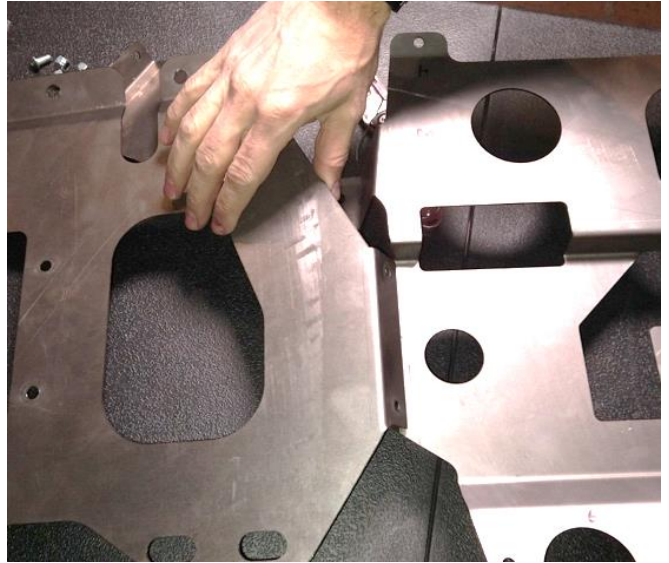
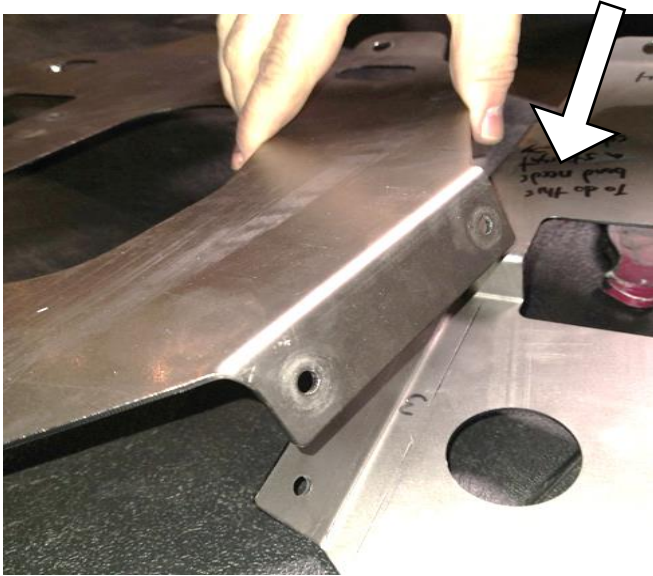
Mount the bracket to the large center section as shown and mount with provided button head hardware



---

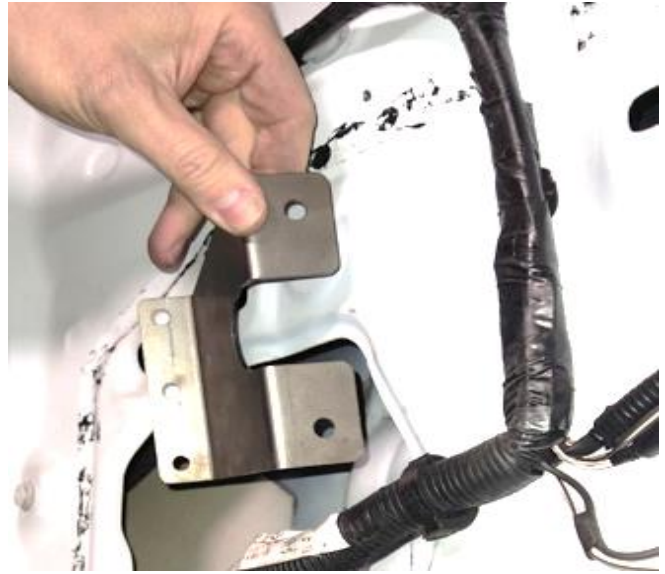
Mount the small center section to the large center section as shown and mount with provided button head hardware.

THE SMALL CENTER SECTION MUST OVERLAP OVER THE LARGE CENTER SECTION

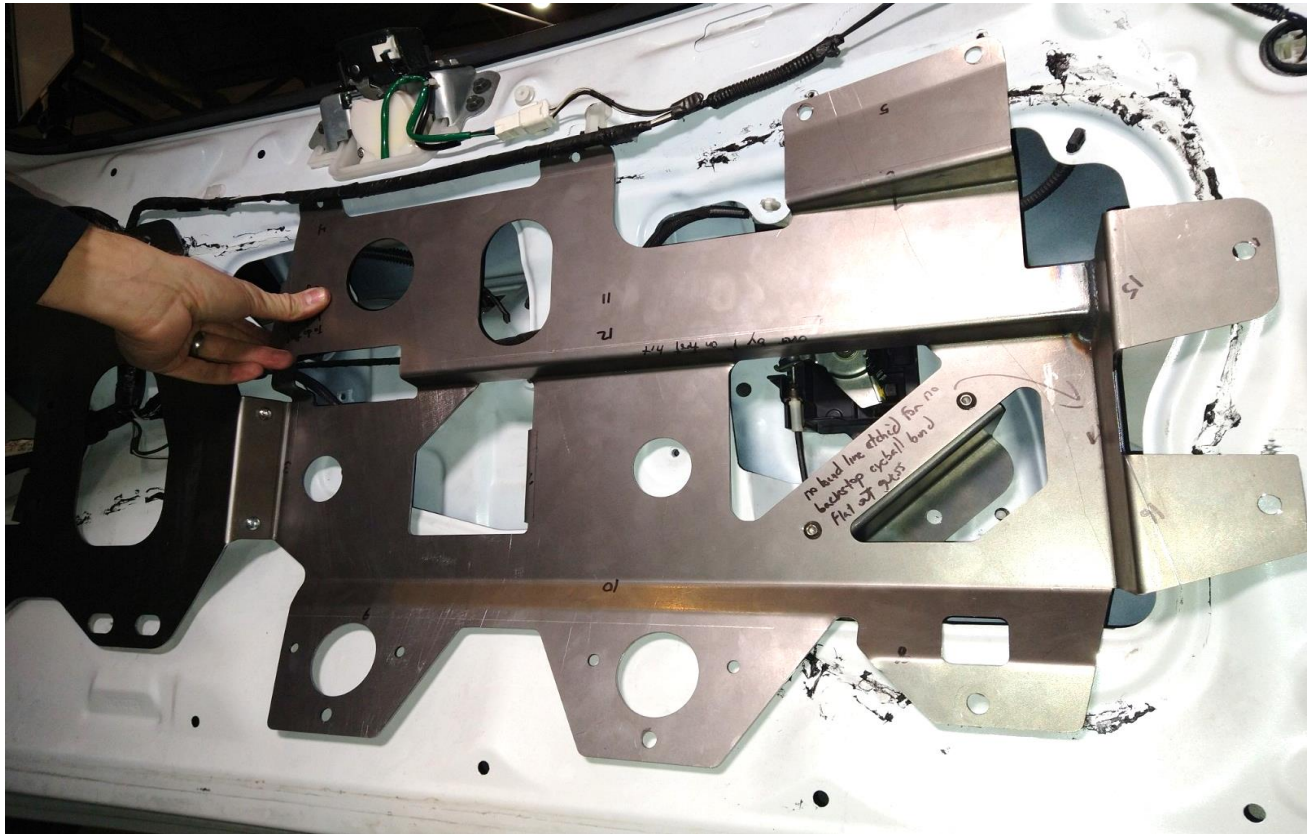


---

Insert the remaining bracket into the door pocket as shown for mounting later.



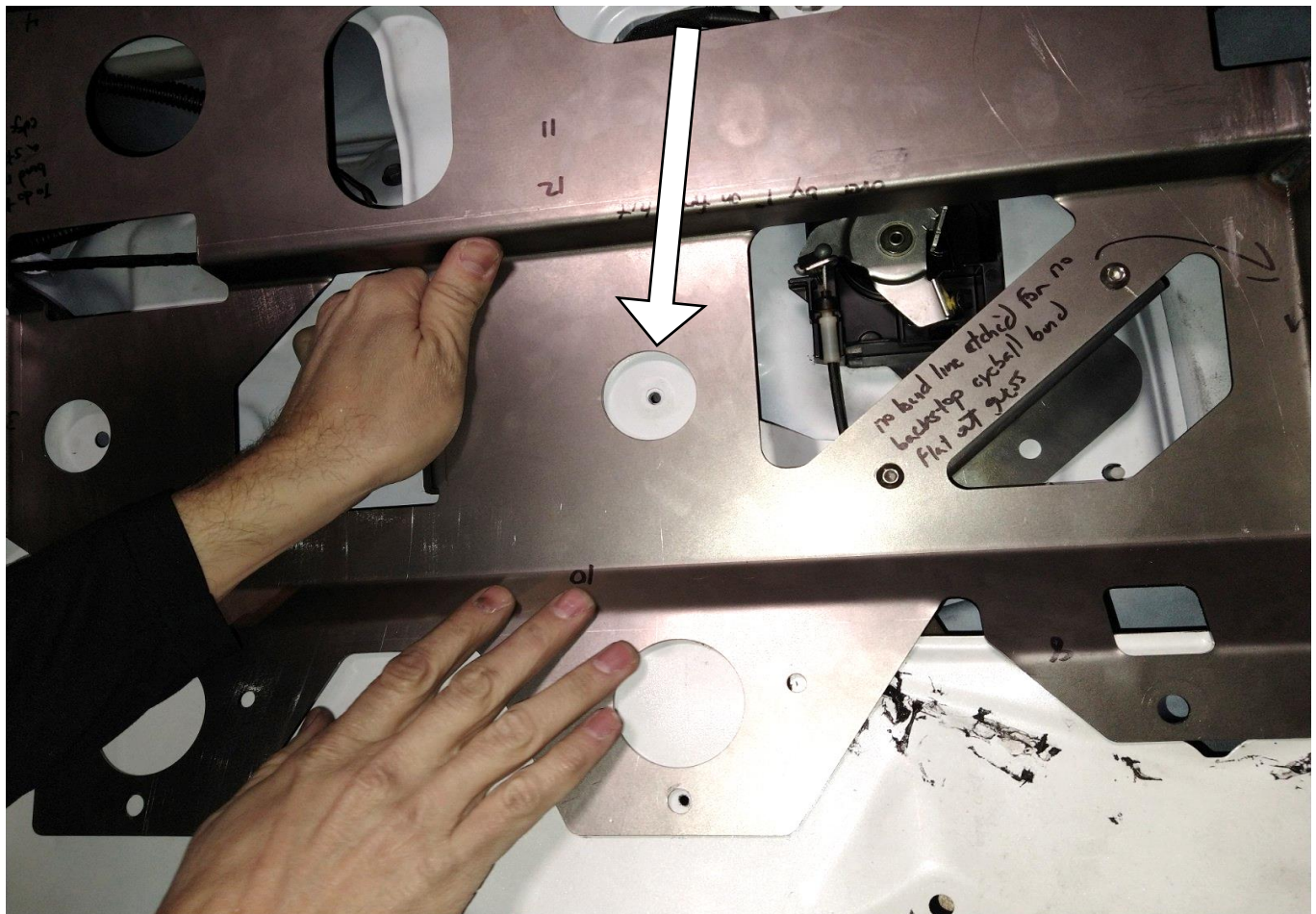
Place the internal brace as shown on the door.



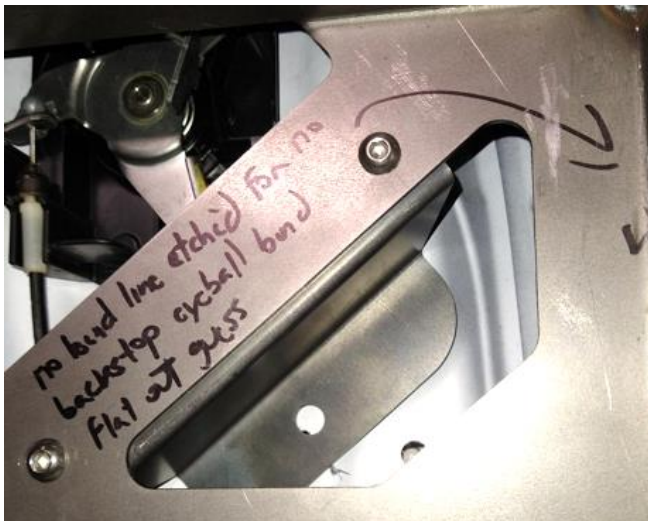
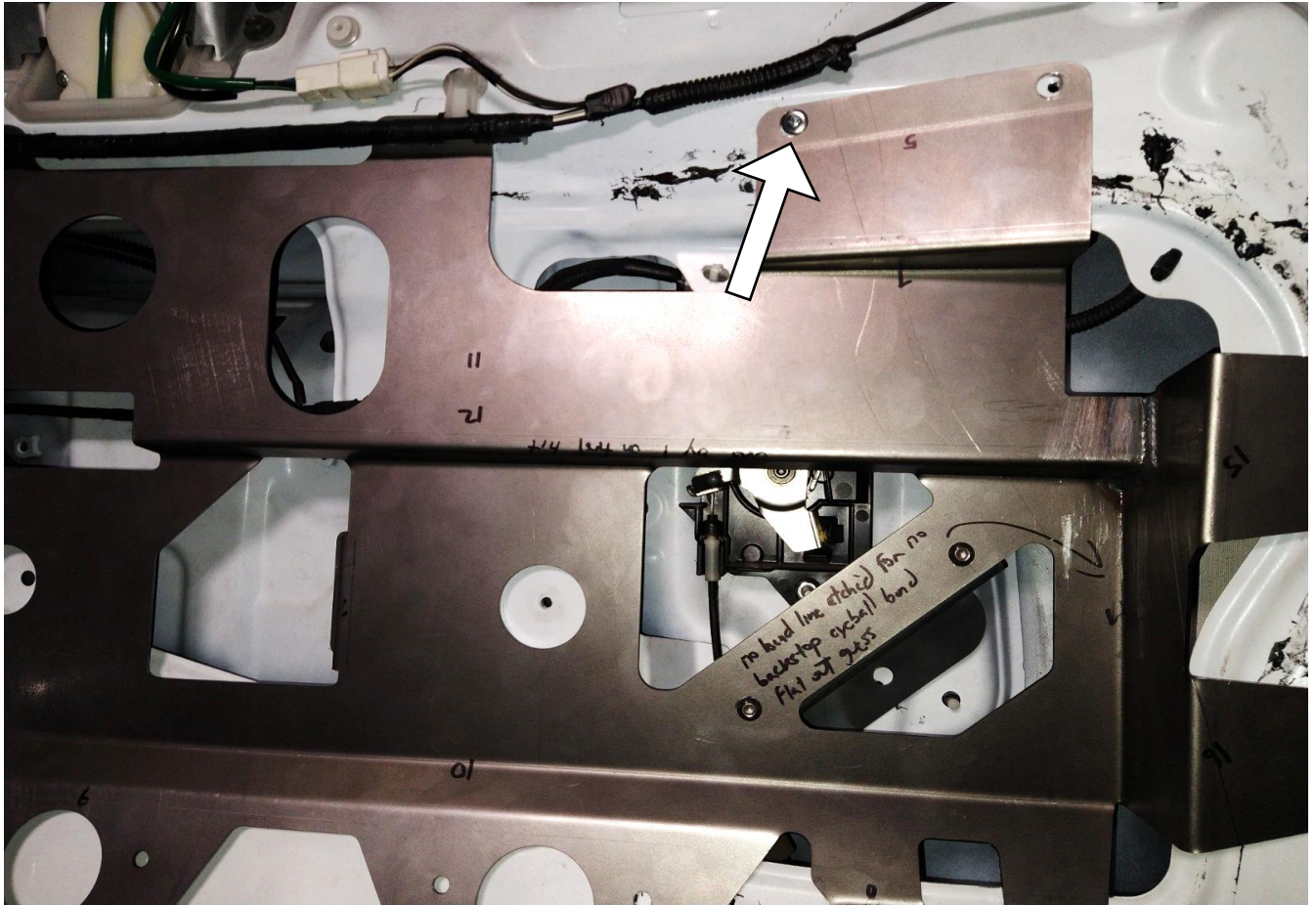
LOOSELY remount the 2 OEM black tabs on the lower edge of the door for the tool kit. Mount the bracket located in the door pocket to the small center section as shown and mount with provided button head hardware.



Before mounting in place for hole marking, center the bolt location and hole as shown below.



Use the provided tap screws to hold the door brace in place. Tighten the 2 OEM black tabs on the lower edge of the door for the tool kit and other hardware to in place to mark all hole locations. Once marked, remove the internal brace and drill all locations for the provided riv nuts. The area of the license plate panel can use standard bolts and washers instead of riv nuts.





With the hole locations marked, use a center punch to mark, then drill each hole to roughly 3/8" in size. With two wrenches, begin twisting your Riv nut down into the roof until you feel it 'sit' snug. Then go ahead and hold the bottom wrench in place and twist off the long bolt. Your Riv nut should remain firmly in place. Continue this with the other drilled hole and then repeat these steps for the other rear side of vehicle. Cover the mount locations with the provided foam strip and mount the brackets using the provided hardware

With the Riv nuts installed, reattach the door brace and remount as before along with the provided button head hardware to mount to all locations. For the hole as shown below use the provided clip nut and spacer. Mount using the provided 5/16" button head hardware.



Once in place reattach all interior trim and hardware. Everything should fit into place as before.