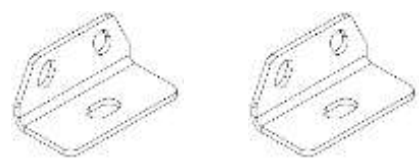
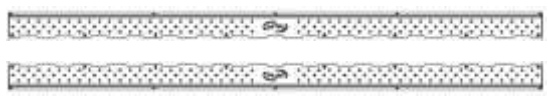
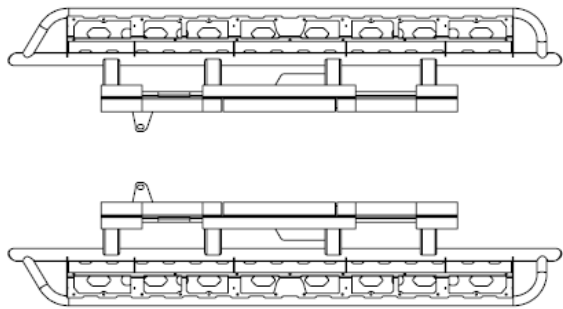




**INSTALLATION GUIDE**  
NISSAN FRONTIER  
ROCKER GUARDS 2022+



# HARDWARE



SKILL LEVEL - 2 STARS



- 1 STAR ★☆☆☆☆
- 2 STARS ★★☆☆☆
- 3 STARS ★★★☆☆
- 4 STARS ★★★★☆
- 5 STARS ★★★★★

- EASY - No tools required
- BASIC - Requires standard tools, basic mechanical knowledge and understanding
- MODERATE - Requires standard tools. Some drilling and/or cutting.
- ADVANCED - Requires speciality tools. Drilling, cutting, and/or welding
- EXPERT - Professional installation recommended.

## DISCLAIMER

Expedition One is not responsible for any damages to vehicle or injury.  
We always recommend professional assistance when installing our vehicle products.

Always follow safety precautions including the use safety gear and devices.

# INSTALLATION

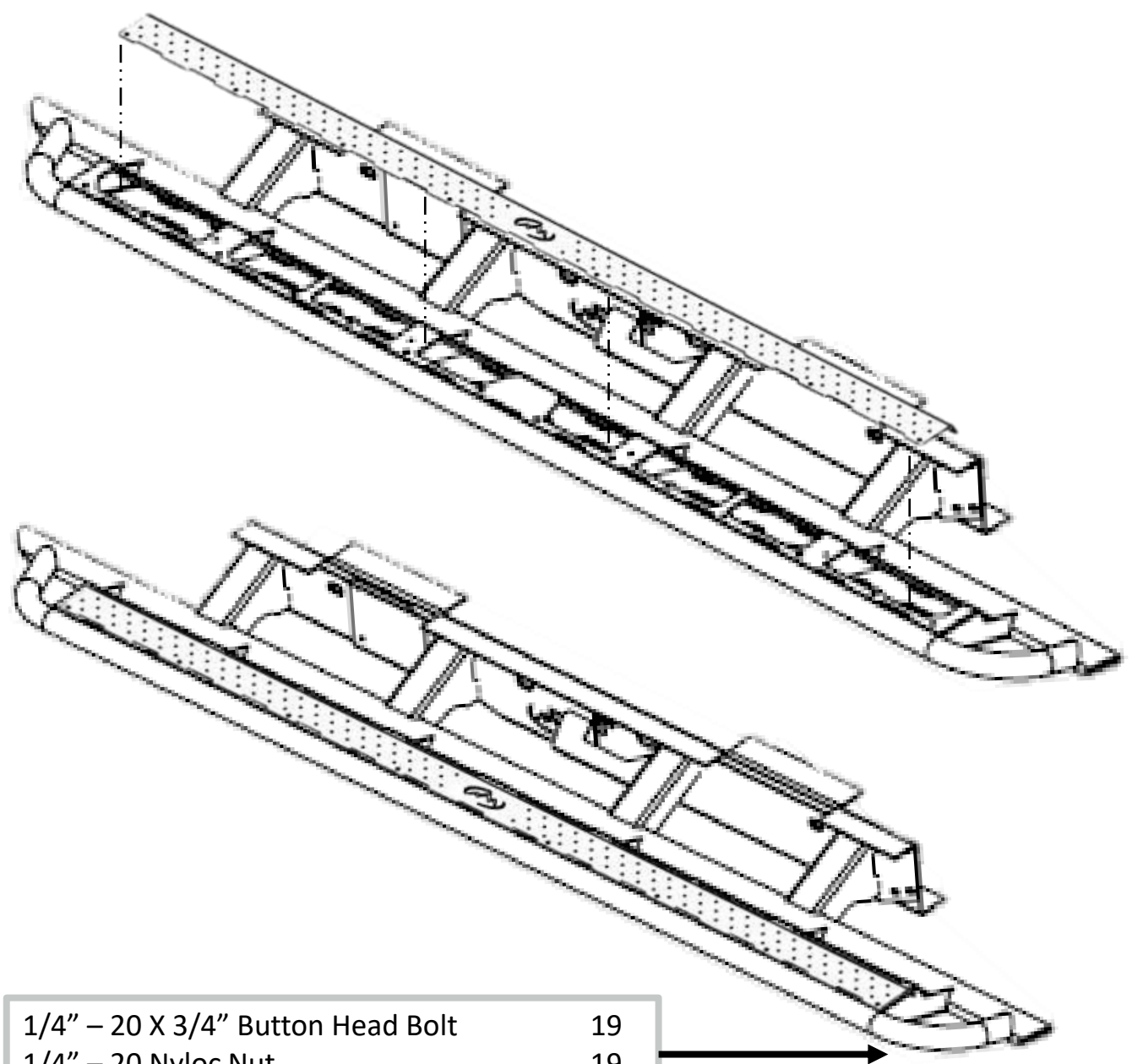
## 1 OEM STEP REMOVAL

If equipped, remove the OEM steps or sliders from the vehicle.

## 2 TREAD PLATE INSTALLATION

Install the tread plates on the rocker guards using the provided 1/4" hardware.

DRIVERS SIDE SHOWN

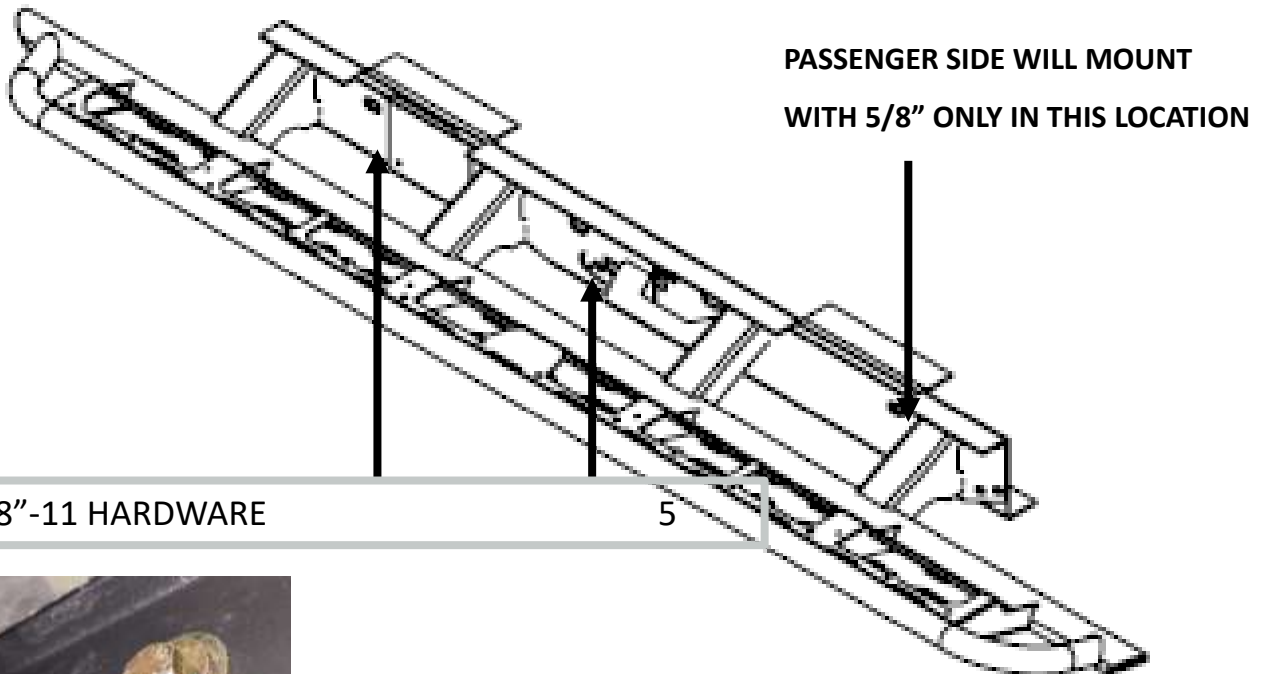
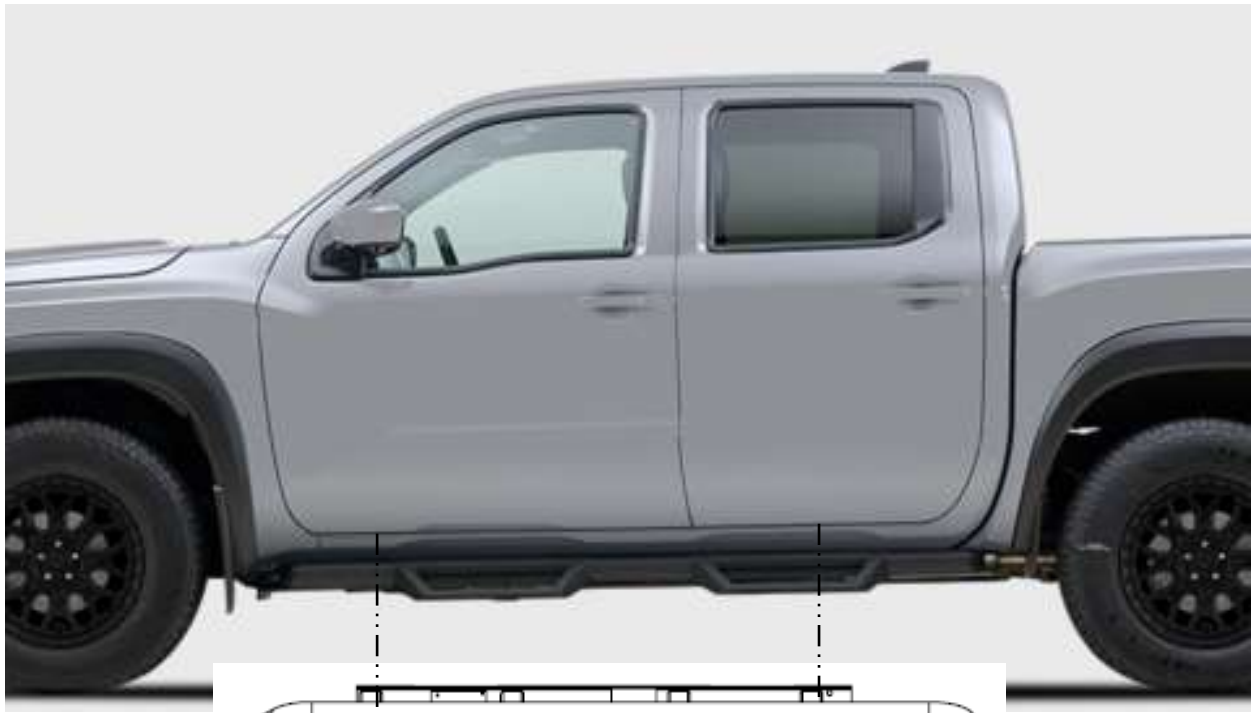


1/4" – 20 X 3/4" Button Head Bolt	19
1/4" – 20 Nyloc Nut	19

### 3 ROCKER GUARD MOUNTING

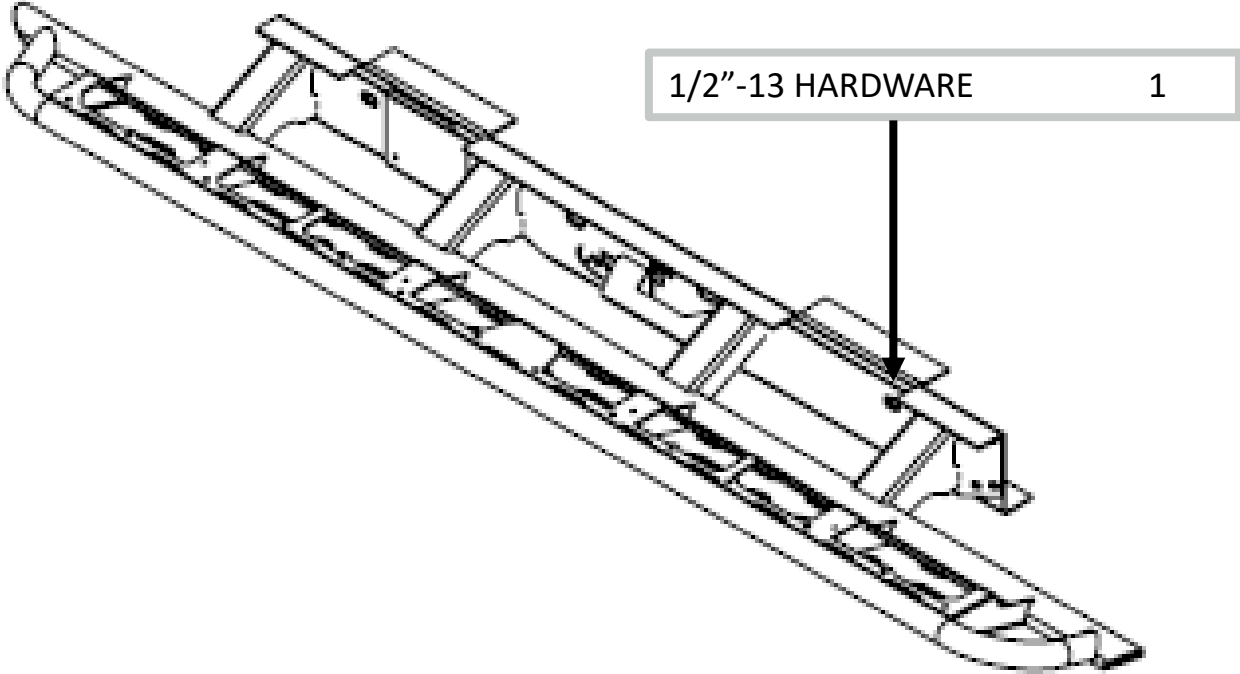
Unbolt any underside skid plates or hardware on the frame rail to provide access for mounting the rocker guards.

**DRIVERS SIDE SHOWN**



**CONTINUED**

Mount using 1/2" hardware and nut retainer drivers side only for fuel tank clearance.

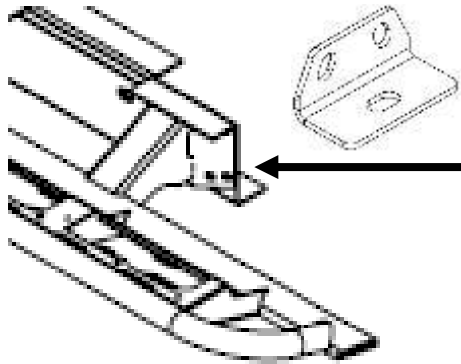
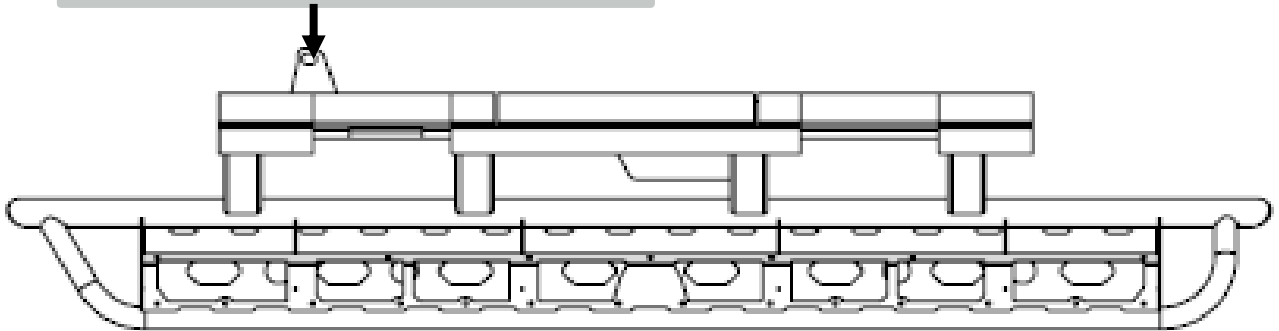


## 4 ROCKER GUARD MOUNTING

Mount remaining 3/8" hardware locations. Attach OEM skids or rear location using factor hardware or the provided self tap screws. Some of these locations may require the use of the self tap screws due to varied OEM locations.

3/8"-16 HARDWARE

2



3/8"-16 HARDWARE

2



## 5 HARDWARE

Check that all hardware has been installed. Once complete align and center the rocker guards with the vehicle. Even and equally space all gaps and spaces with the vehicle.

**TIGHTEN ALL HARDWARE.**

CHECK HARDWARE REGULARLY AND TIGHTEN AS NEEDED, INCLUDING AFTER OFFROAD USE.