

INSTALLATION GUIDE

Rear Bumper



HARDWARE

14 – ½”-13 X 1 1 ½” HEX BOLTS

14 – ½”-13 NYLOC NUT

20 – ½” USS WASHER

8 – ½” SAE WASHER

First, we'll be disconnecting the license plate light from underneath the stock bumper.

FIG 1A



FIG 1B

Next, we'll be removing the two bolts shown at the top of photo in Fig 1B



FIG 1C



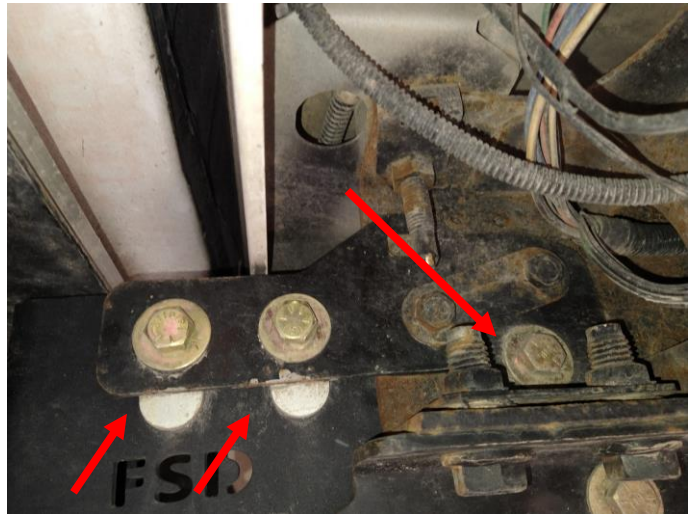
Mount the large brackets to the outside of the frame as shown.

Both brackets will mount using the provided $\frac{1}{2}$ " hardware and OEM bolt bracket.



Inside section will mount with the thin bracket as shown.

Use the provided spacers in the locations shown by arrow.



Leave all hardware loose for adjustment when fitting the bumper.

When ready attach the bumper with the provided $\frac{1}{2}$ " hardware. Make sure the bumper is level and even with the body before tightening all hardware.

Last step before you mount bumper. Cut the stock license plate wires so you will be ready to connect the wires at a later time.

Now that you have the license plate lights and frame brackets installed you are ready to mount the bumper.

Have one person underneath to tighten the bolts. Make sure you have enough gap between the bumper and tailgate also check that you have a gap from the bumper and body so when the frame flexes the bumper won't rub on the body.

(NOTE: as you tighten the bolts the bumper will move so you want to tighten the bolts evenly side to side. One trick you can use would be to cut some wood with the desired gap between the bumper and tailgate while it is being tightened. It can move on you.)

Last item needed is to wire the license plate lights to the positive and ground wires that you cut on the license plate wire.

This is also a good time to wire the lights in the light ports. One easy way to hook up the new lights will be to wire them to the back up lights so they will go on when you are backing up.

Your bumper installation should now be complete at this point!

If you have any additional install questions or feedback, please email us at info@expeditionone.biz

FIG 3A



FIG 3B



FIG 3C

