



# INSTALLATION GUIDE

## UNIVERSAL TIRE MOUNT



# NOTE

## SKILL LEVEL - ★★

1 STAR ★☆☆☆☆

2 STARS ★★☆☆☆

3 STARS ★★★☆☆

4 STARS ★★★★☆

5 STARS ★★★★★

EASY - No tools required

BASIC - Requires standard tools, basic mechanical knowledge and understanding

MODERATE - Requires standard tools. Some drilling and/or cutting.

ADVANCED - Requires speciality tools. Drilling, cutting, and/or welding

EXPERT - Professional installation recommended.

## DISCLAIMER

Expedition One is not responsible for any damages to vehicle or injury.

We always recommend professional assistance when installing our vehicle products.

Always follow safety precautions including the use safety gear and devices.

We highly recommend customers wait until they have the product in hand to schedule installations. All cancellations are required in writing and will incur a 10% re-stock fee and any applicable packaging and shipping fees. Please review terms and conditions for details.

- A narrow wheel with an extreme positive offset and a very wide tire may not work with the standard tire mount
- May NOT work with all patterns, wheels, or lug combinations or aftermarket wheels
- Holds up to a 40" tire with certain wheel/tire combinations recommended size: up to a 37" tire

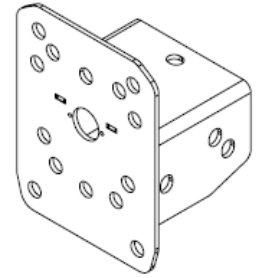
(May Vary By Vehicle)

- This product contains chemicals known to the state of California to cause birth defects or other reproductive harm. For more information go to [www.p65warnings.gov](http://www.p65warnings.gov)

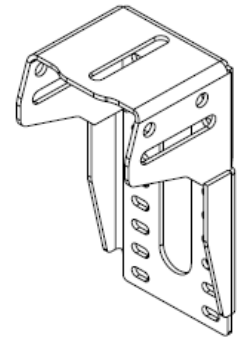
# HARDWARE

## HARDWARE

1/2"-13 X 1 1/4" HEX CAP	4
1/2"-13 NYLOC NUT	4
1/2" USS WASHER	8
3/8"-16 X 1 1/4" HEX CAP	4
3/8"-16 NYLOC NUT	4
3/8" USS WASHER	8
VEHICLE DEPENDENT – METRIC 12 OR 14	
STUD	3
LUG NUT	3
TEAR DROP SPACER	3
LARGE WASHER (FOR STUD PRESS IN)	1

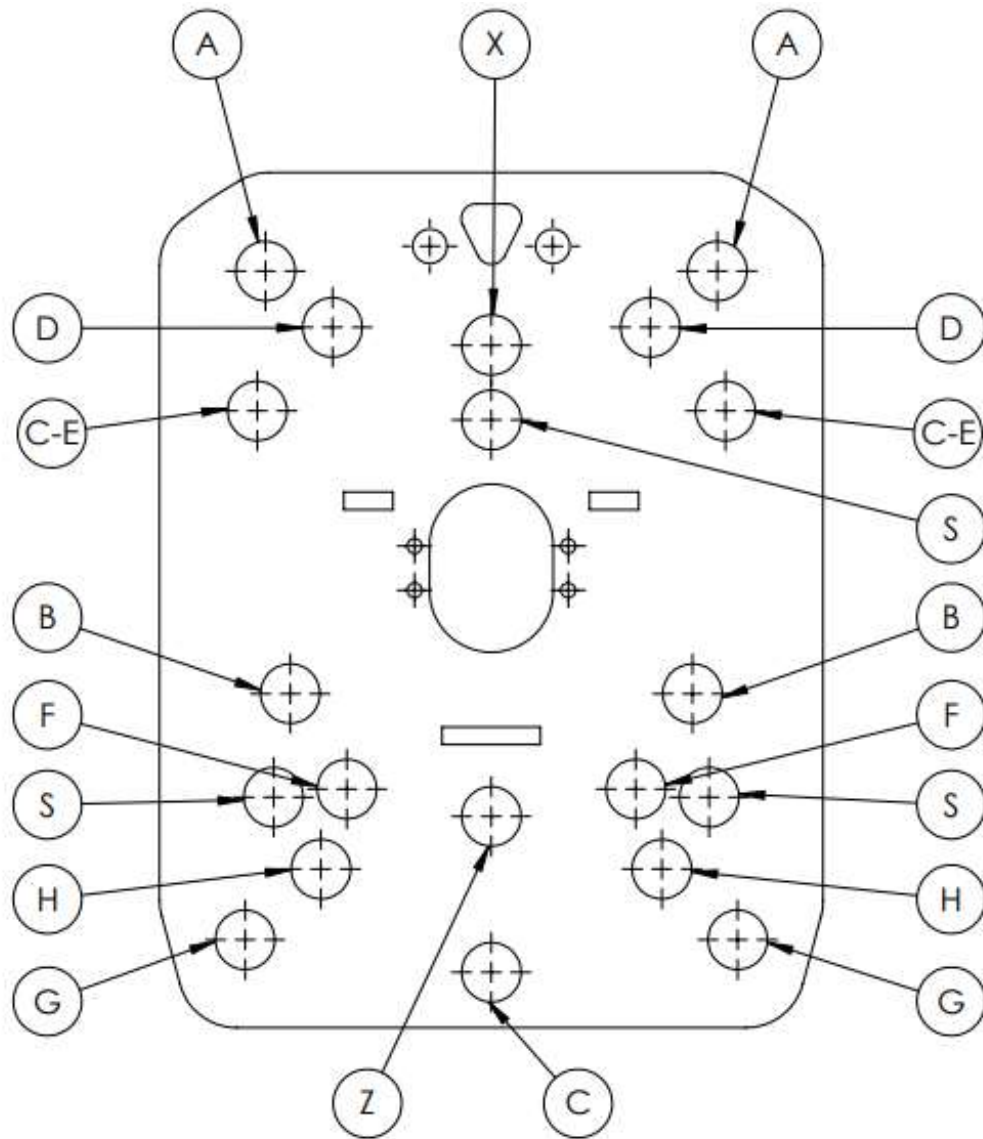


**TIRE MOUNT**



**CARRIER MOUNT**

# BOLT PATTERN



HOLE PATTERN ID	BOLT PATTERN	VEHICLE
A - Z	8 ON 6.5"	RAM 2500 - 3500
B - X	6 ON 120mm	COLORADO / CANYON
C (3X)	8 ON 170mm	FORD SUPERDUTY
D - Z	5 ON 5.5"	RAM / CHEV / GMC 1500
E - Z	6 ON 5.5"	TOYOTA / RANGER
F - X	5 ON 5"	JEEP JK / JL / JT
G - X	8 ON 180mm	CHEV / GMC 2500 - 3500
H - X	5 ON 150mm	TUNDRA
S	6 ON 130mm	SPRINTER

NOTE - May NOT work with all patterns, wheels, or lug combinations or some aftermarket wheels

# PRESS IN STUDS



WS327B  
10.9

**B**



WS327S  
10.9

**S**



**12X1.5**



**14X1.5**

**12 X 1.5**

**14 X 1.5**

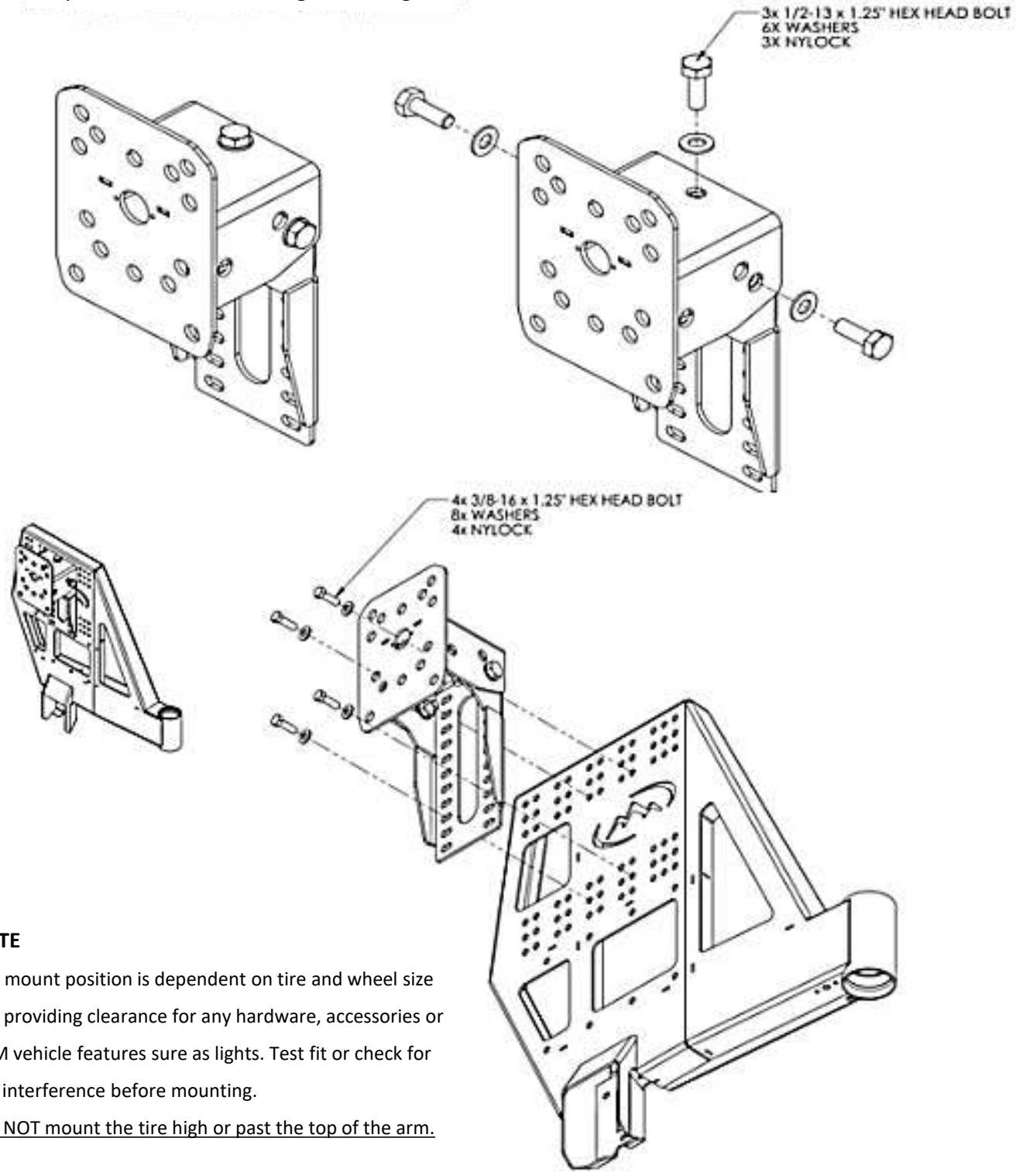
## NOTE

- Studs can be pressed in using a press
- Manually by putting the stud through the opening and placing the lug upside down with the large washer over the threaded end. Screw the wheel nut on with an impact, it will suck the stud through. There are various forums, websites and how to videos (YouTube) on this. It is **RECOMMENDED** that you read or watch these before installing your lugs this way. Incorrectly installed lugs or damage during the install will **NOT** be warranted
- Use the provided tear drop spaces on the press in side to counter shallow offset wheels.

# INSTALLATION

## 1 TIRE CARRIER ASSEMBLY

- Assemble the tire mount as shown by sliding the tire carrier over the top of the swing arm mount loosely mount with the 1/2" hardware as shown below. Mount in the desired position on either swing arm using the 3/8" hardware provided.



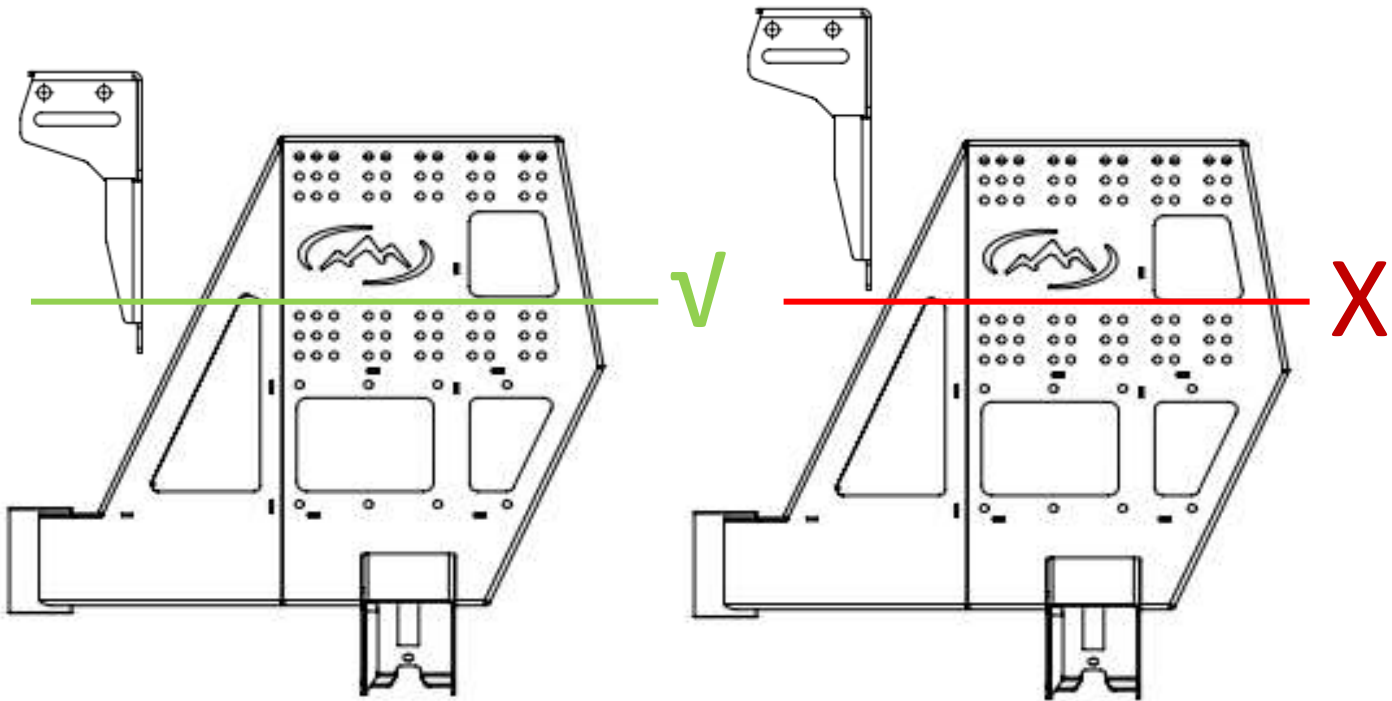
### NOTE

Tire mount position is dependent on tire and wheel size and providing clearance for any hardware, accessories or OEM vehicle features such as lights. Test fit or check for any interference before mounting.

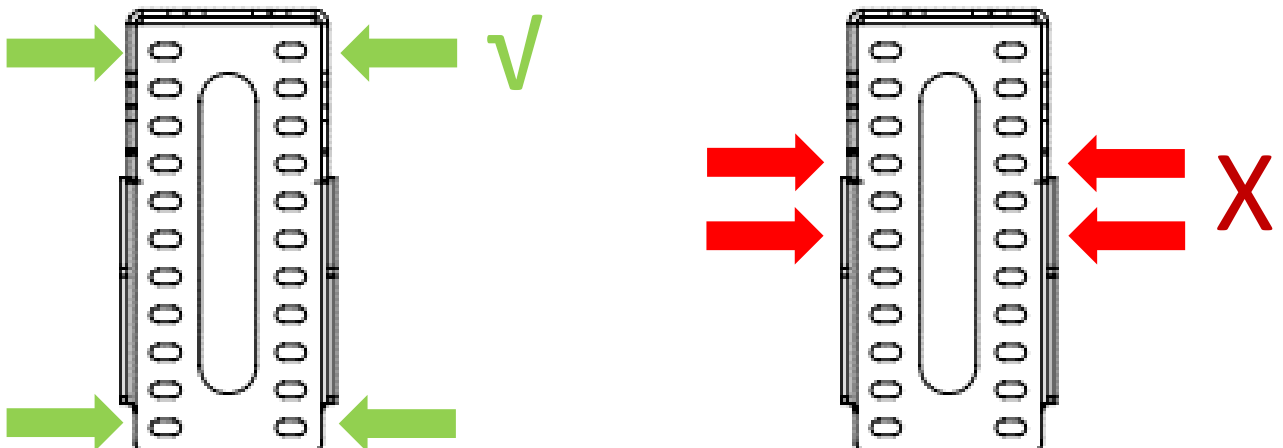
DO NOT mount the tire high or past the top of the arm.

Mounting the tire carrier to high may result in damage and will **NOT** be warranted. Mount as low on the arm as possible. It is recommend that if the tire carrier is mounted past the top of arm, that it go no further than the 3 bottom slot locations. Spread out the mounting hole locations as much as possible in conjunction with the arm.

### HEIGHT EXAMPLE

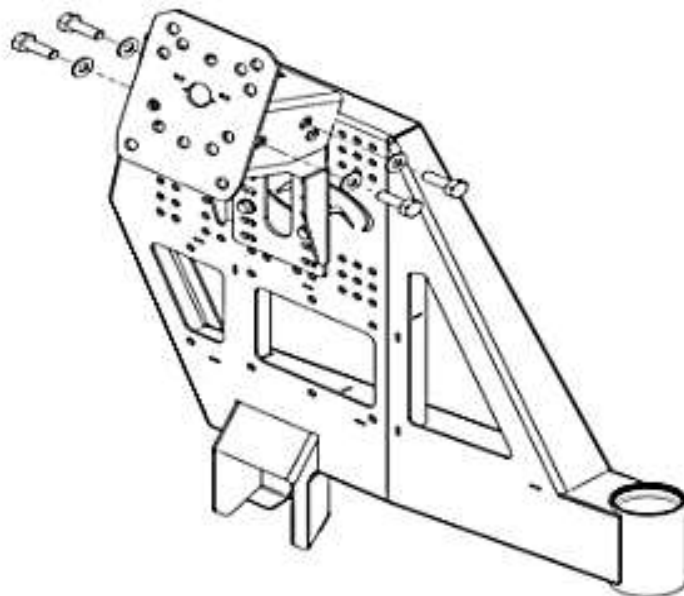
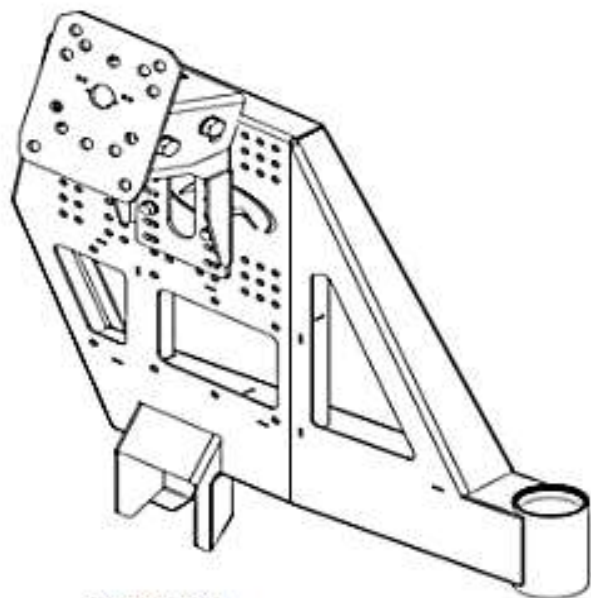
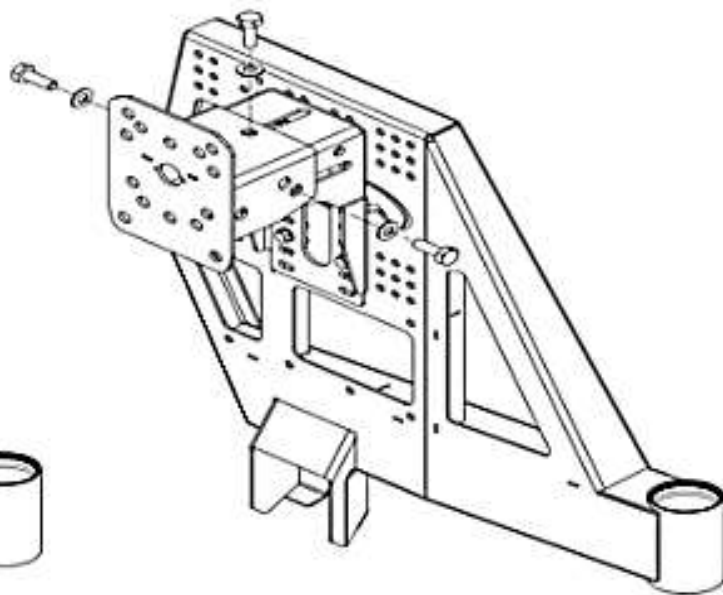
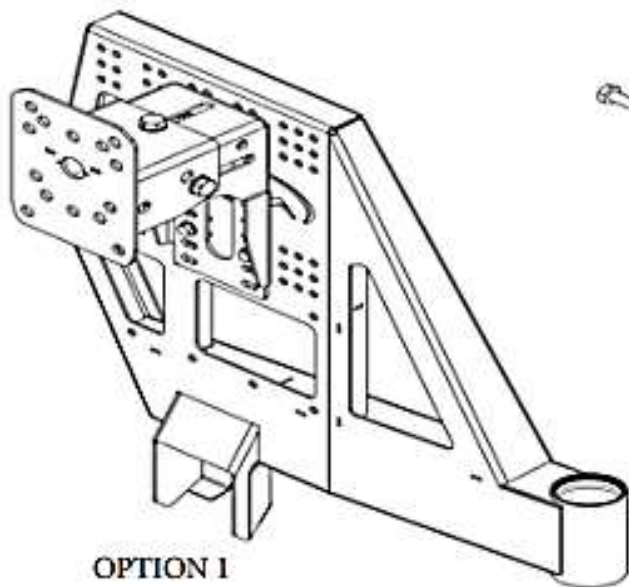


### HARDWARE MOUNTING LOCATION EXAMPLE



## TIRE CARRIER PLACEMENT

- Attach the tire mount in the desired position and mount using the provided 1/2" hardware.



### NOTE

Certain options may not work with all tire and wheel combinations or vary per vehicle

DO NOT mount the tire high or past the top of the arm

**TIGHTEN ALL HARDWARE AFTER EVERYTHING IS INSTALLED ON THE VEHICLE.**

**CHECK AND RETIGHTEN ALL HARDWARE AFTER THE FIRST 100 MILES AND AFTER OFF ROADING.**

**CHECK REGULARLY**