



INSTALLATION GUIDE

2021+ BRONCO BASE REAR



NOTE

SKILL LEVEL - ★★★

1 STAR ★☆☆☆☆

2 STARS ★★☆☆☆

3 STARS ★★★☆☆

4 STARS ★★★★☆

5 STARS ★★★★★

EASY - No tools required

BASIC - Requires standard tools, basic mechanical knowledge and understanding

MODERATE - Requires standard tools. Some drilling and/or cutting.

ADVANCED - Requires speciality tools. Drilling, cutting, and/or welding

EXPERT - Professional installation recommended.

DISCLAIMER

Expedition One is not responsible for any damages to vehicle or injury.
We always recommend professional assistance when installing our vehicle products.

Always follow safety precautions including the use safety gear and devices.

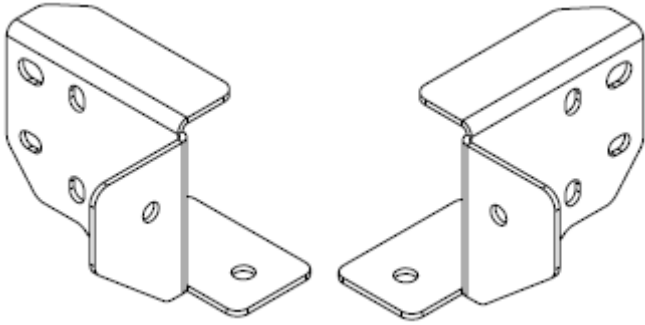
We highly recommend customers wait until they have the product in hand to schedule installations. All cancellations are required in writing and will incur a 10% re-stock fee and any applicable packaging and shipping fees. Please review terms and conditions for details.

* A narrow wheel with an extreme positive offset and a very wide tire may not work with the standard tire mount

***Sensor holes are included however they are not guaranteed to work.**

This product contains chemicals known to the state of California to cause birth defects or other reproductive harm. For more information go to www.p65warnings.gov

HARDWARE



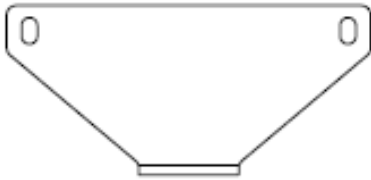
MOUNTNG BRACKETS

REAR BUMPER HARDWARE

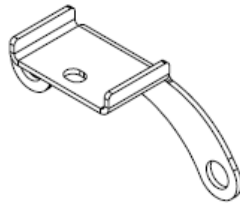
| | |
|---------------------------------|----|
| 1/2" – 13 X 1 1/4" HEX CAP BOLT | 10 |
| 1/2" – 13 NYLOC NUT | 10 |
| 1/2" USS WASHER | 20 |
| 5/8" – 11 X 1 1/2" HEX CAP BOLT | 2 |
| 5/8" USS WASHER | 2 |

TREADPLATE & HARDWARE

| | |
|----------------------------|----|
| 1/4"-20 X 3/4" BUTTON HEAD | 10 |
| 1/4"- 20 NYLOC NUT | 10 |



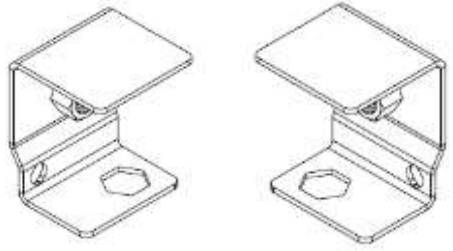
LICENSE PLATE MOUNT



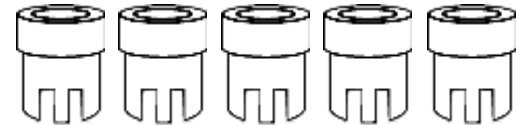
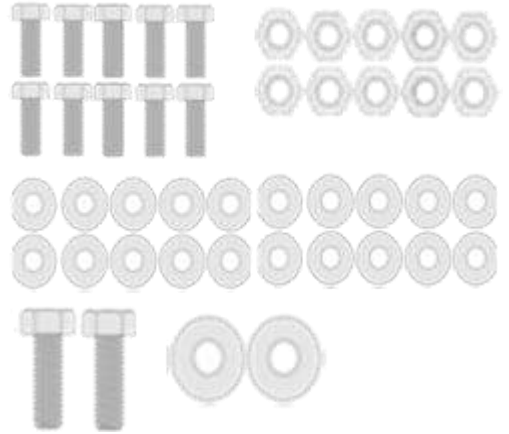
LUG BRACKET

LICENSE PLATE MOUNT HARDWARE

| | |
|---------------------------|---|
| LUG – 12 X 1.5 | 3 |
| BRONZE BUSHING | 4 |
| 8 – 32 X 1/2" BUTTON HEAD | 2 |
| 8 – 32 NYLOC NUT | 2 |
| M12 – 1.5 X 45MM HEX CAP | 2 |
| M12 – 1.5 X 50MM HEX CAP | 2 |



NUT RETAINER BRACKETS



SENSOR BEZELS

| | |
|-----------------------------|---|
| LICENSE PLATE LIGHT | 1 |
| 1/4"-20 X 3/4" HEX CAP BOLT | 2 |
| 1/4"- 20 NYLOC NUT | 2 |
| 1/4" USS WASHER | 2 |
| 5/16"-18X3/4" CARRIAGE | 1 |
| 5/16" – 18 NYLOC NUT | 1 |
| 5/16" USS WASHER | 2 |

INSTALLATION

1 REMOVE OEM BUMPER

- Disconnect the wiring loom on the drivers side.
- Remove the frame bolts (Circled) to remove the bumper.
- Check for any remaining hardware or connections before removing the bumper.
- Keep OEM hardware for reinstallation on the new bumper



2 REMOVE THE BUMPER

Remove the bumper from the vehicle.

3 OEM BUMPER HARDWARE REMOVAL

Remove the wiring loom and sensors by removing any clips or mounts located on the inside of the bumper

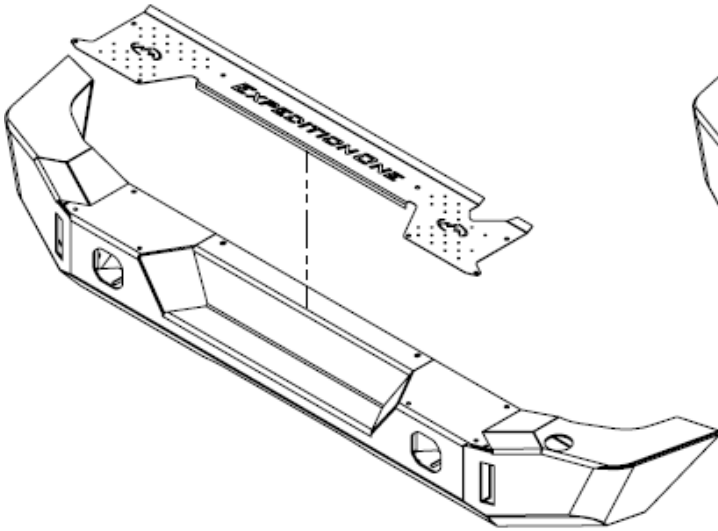
4 PARKING SENSOR INSTALLATION (IF APPLICABLE)

Place the OEM wiring harness into the new bumper, threading the wiring through so that connectors match their respective positions. Make sure the wiring harness connector is located on the correct side of the vehicle. Reattach all 4 parking sensors to the provided sensor bezels. Avoid placing the wiring harness near mounting holes and visible cutouts. Mount any aftermarket lights at this time.

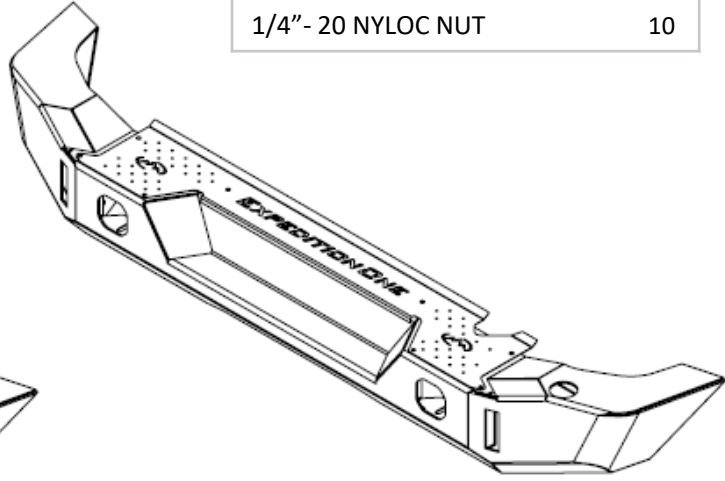
NOTE - The license plate will be relocated to the tire or another place of your choosing. The wiring for this can be extended at this point. We do not provide any hardware or parts for the wiring.

5 TREAD PLATE INSTALLATION

Mount the tread plate as shown using the provided 1/4"



| | |
|----------------------------|----|
| 1/4"-20 X 3/4" BUTTON HEAD | 10 |
| 1/4"- 20 NYLOC NUT | 10 |



6 NUT RETAINER BRACKET LOCATION

Place the provided nut retainer brackets inside the frame as shown.



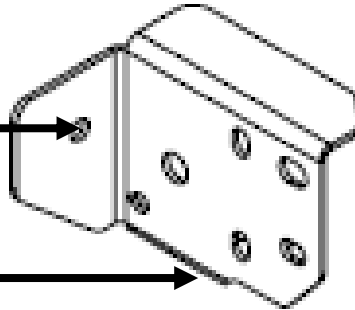
7 MOUNTING BRACKET

Attach the mounting brackets to the vehicle as shown using the provided 1/2" hardware and bottom OEM hardware. Leave all hardware loose for adjustment, this is just to hold the bracket in place for mounting the bumper.



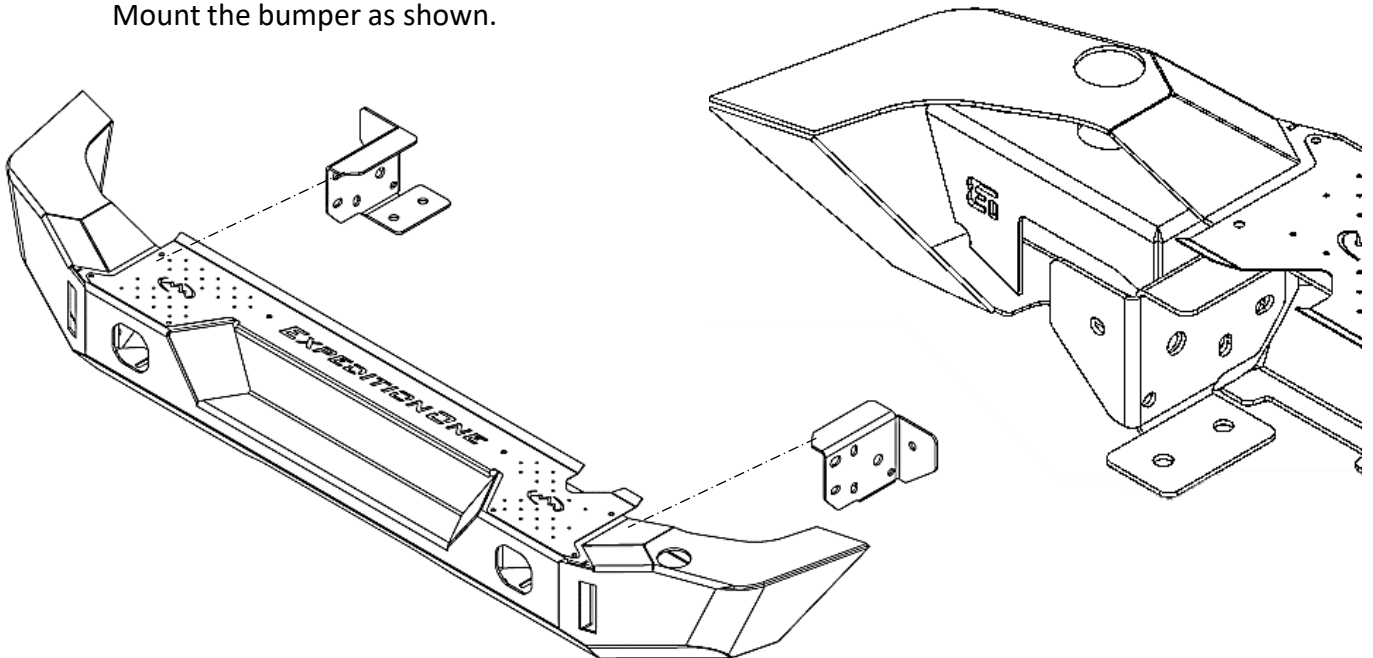
| | |
|---------------------------------|---|
| 1/2" - 13 X 1 1/4" HEX CAP BOLT | 2 |
| 1/2" - 13 NYLOC NUT | 2 |
| 1/2" USS WASHER | 4 |

| | |
|--------------|---|
| OEM HARDWARE | 4 |
|--------------|---|

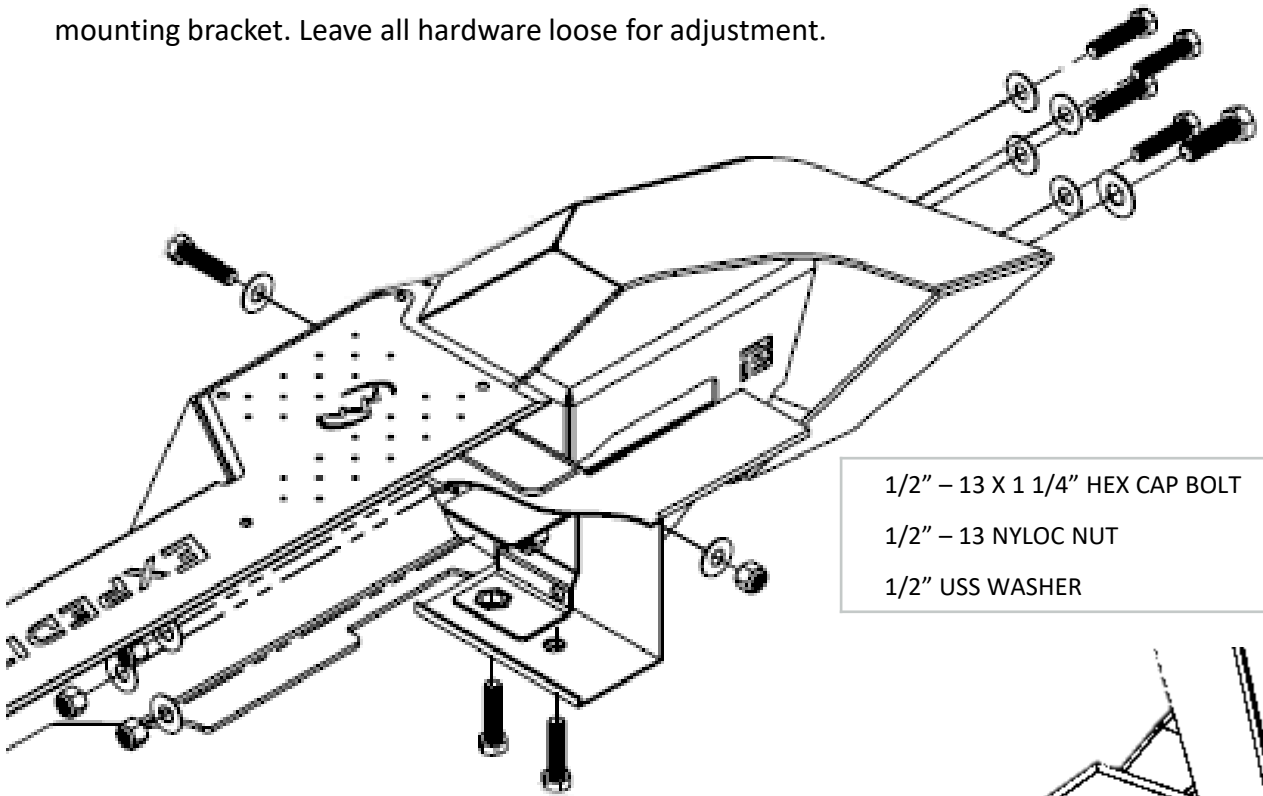


8 INSTALLATION OF THE REAR BUMPER

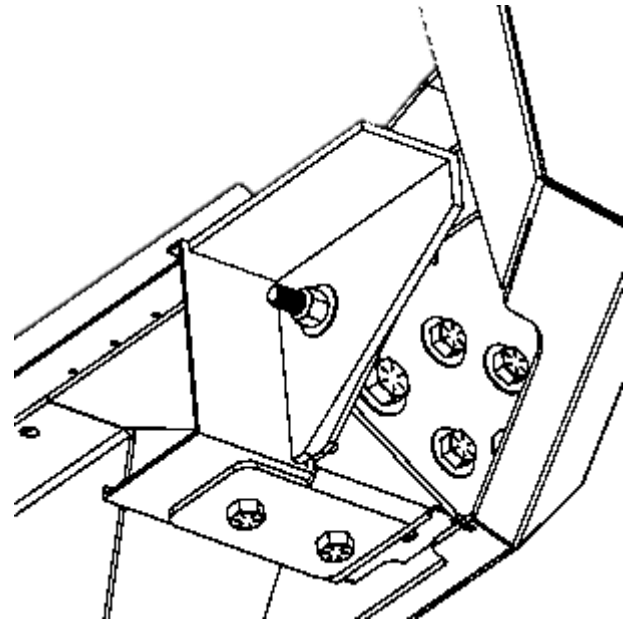
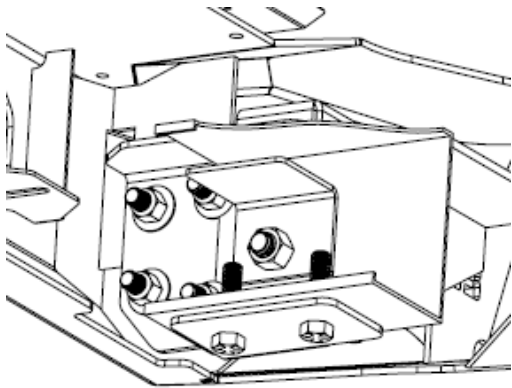
Mount the bumper as shown.



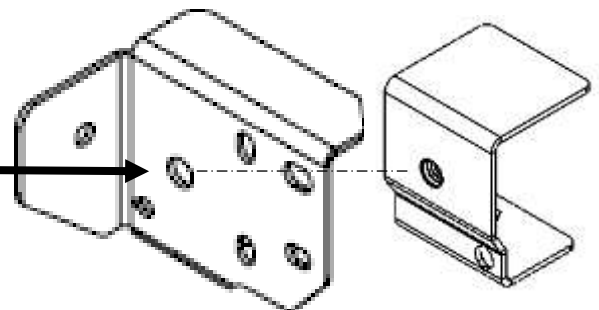
Center the bumper with the vehicle and align gaps between the body and bumper to your preference before mounting. Mount the front bumper using the supplied 1/2" hardware as shown below. Use the 5/8" hardware to mount the bumper to both the nut retainer and mounting bracket. Leave all hardware loose for adjustment.



| | |
|---------------------------------|----|
| 1/2" – 13 X 1 1/4" HEX CAP BOLT | 8 |
| 1/2" – 13 NYLOC NUT | 8 |
| 1/2" USS WASHER | 16 |



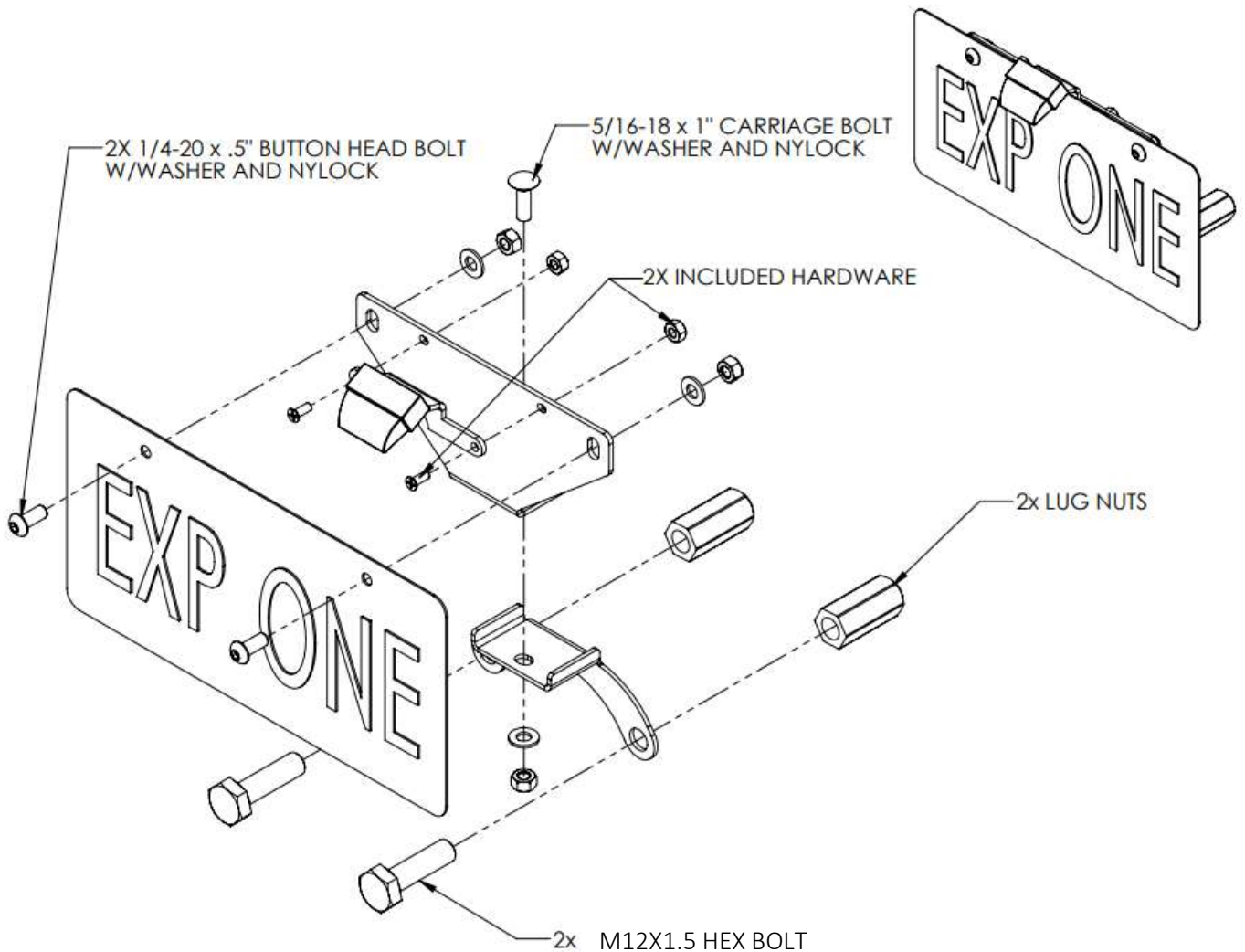
| | |
|---------------------------------|---|
| 5/8" – 11 X 1 1/2" HEX CAP BOLT | 2 |
| 5/8" USS WASHER | 2 |



9 LICENSE PLATE RELOCATION OPTION

Assemble the license plate relocation as shown using the provided hardware.

NOTE - The license plate can be relocated to the tire or another place of your choosing. We do not provide any hardware or parts for the wiring.



10 TIGHTEN ALL HARDWARE

Check that all hardware is tightened including all brackets and mounting locations.

11 RECONNECT WIRING HARNESS

Reconnect the parking sensor wiring harness to the vehicles electronics and secure all loose wiring. Check that everything is working and adjust if needed before driving on the road.

TIGHTEN ALL HARDWARE AFTER EVERYTHING IS INSTALLED ON THE VEHICLE.

CHECK AND RETIGHTEN ALL HARDWARE AFTER THE FIRST 100 MILES AND AFTER OFF ROADING.

CHECK REGULARLY

ADDITIONAL LINKS

<https://www.exp-one.com/wp-content/uploads/2016/10/Proper-Care-and-Maintenance.pdf>

<https://www.exp-one.com/wp-content/uploads/2016/10/Paint-touch-up-instructions.pdf>

<https://www.exp-one.com/wp-content/uploads/2018/02/Exp-One-2016-TC-word-doc.pdf>