



INSTALLATION GUIDE
2021+ BRONCO FRONT BUMPER



NOTE

SKILL LEVEL - ★★☆☆

- 1 STAR ★☆☆☆☆
- 2 STARS ★★☆☆☆
- 3 STARS ★★★☆☆
- 4 STARS ★★★★☆
- 5 STARS ★★★★★

- EASY - No tools required
- BASIC - Requires standard tools, basic mechanical knowledge and understanding
- MODERATE - Requires standard tools. Some drilling and/or cutting.
- ADVANCED - Requires speciality tools. Drilling, cutting, and/or welding
- EXPERT - Professional installation recommended.

DISCLAIMER

Expedition One is not responsible for any damages to vehicle or injury.
We always recommend professional assistance when installing our vehicle products.
Always follow safety precautions including the use safety gear and devices.

We highly recommend customers wait until they have the product in hand to schedule installations. All cancellations are required in writing and will incur a 10% re-stock fee and any applicable packaging and shipping fees. Please review terms and conditions for details.

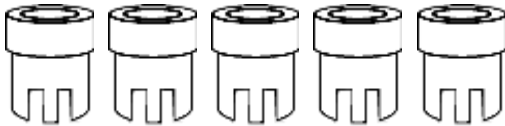
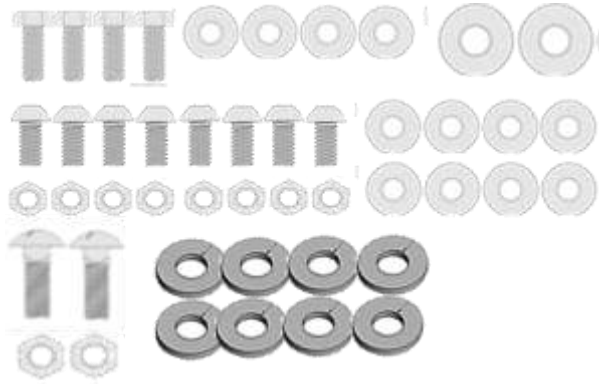
* A narrow wheel with an extreme positive offset and a very wide tire may not work with the standard tire mount
***Sensor holes are included however they are not guaranteed to work.**

This product contains chemicals known to the state of California to cause birth defects or other reproductive harm. For more information go to www.p65warnings.gov

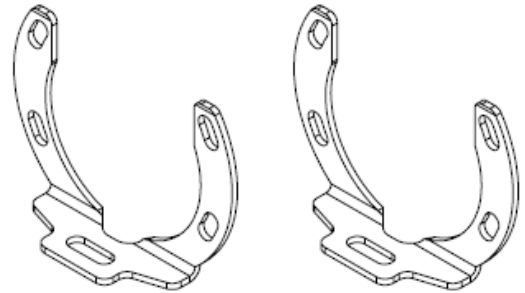
HARDWARE

FRONT BUMPER HARDWARE

1/4" - 20 X 3/4" BUTTON HEAD BOLT	8
1/4" - 20 NYLOC NUT	8
1/4" SAE WASHER	8
1/4" USS WASHER	4
5/16" - 18 X 1" CARRIAGE BOLT	2
5/16" - 18 NYLOC NUT	2
5/16" USS WASHER	2
M6 - 1.0 X 35MM HEX CAP BOLT	4
SPACERS	8



SENSOR BEZELS



OEM LIGHT BRACKETS

EXTRA HARDWARE MAY BE LEFT OVER DUE TO MODEL OR OPTION SPECIFIC HARDWARE THAT MAY NOT BE REQUIRED FOR THE INSTALL.

INSTALLATION

1 REMOVE OEM BUMPER

- Disconnect the wiring loom.
- Drop and remove plastic skid cover (this can be reinstalled at the end)
- Pull the front cover panels off to reveal the mounting hardware.
- Remove the 6 OEM frame bolts. Keep for mounting the new bumper.
- Check for any remaining hardware or connections before removing the bumper.

Varied models and trims may have different parts or designs requiring different removal processes or hardware



2 REMOVE THE BUMPER

Remove the bumper from the vehicle.

3 OEM BUMPER HARDWARE REMOVAL (IF APPLICABLE)

Remove the wiring loom and sensors by removing any clips or mounts located on the inside of the bumper

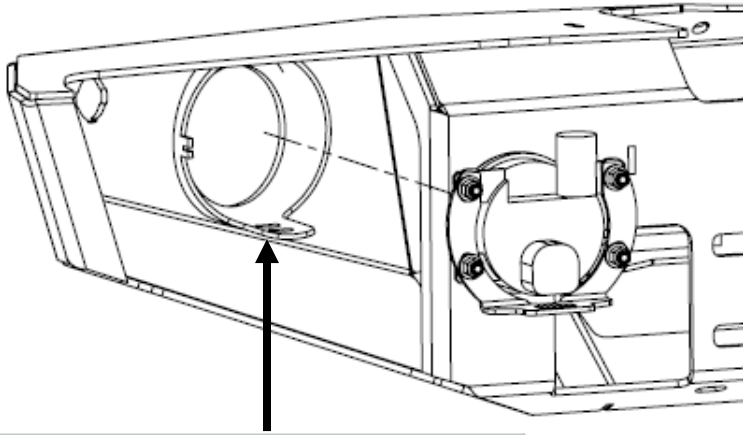


4 PARKING SENSOR INSTALLATION (IF APPLICABLE)

Place the OEM wiring harness into the new bumper, threading the wiring through so that connectors match their respective positions. Make sure the wiring harness connector is located on the correct side of the vehicle. Reattach all 4 parking sensors to the provided sensor bezels. Avoid placing the wiring harness near mounting holes and visible cutouts.

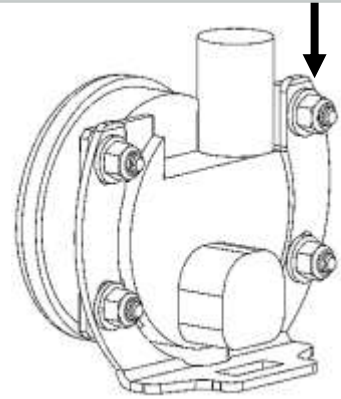
5 OEM LIGHT INSTALLATION (IF APPLICABLE)

Mount the OEM light to the provided horseshoe bracket as shown and attach to the bumper using the 5/16" hardware. Adjust and set the light using the dial.



5/16" - 18 X 1" CARRIAGE BOLT	1
5/16" - 18 NYLOC NUT	1
5/16" USS WASHER	1

1/4"-20 X 3/4" BUTTON HEAD	4
1/4" WASHER	4
1/4"- 20 NYLOC NUT	4



6 GRILLE SHUTTER RELOCATION (IF APPLICABLE – FOR SKID PLATE INSTALL WITH A.C.C)

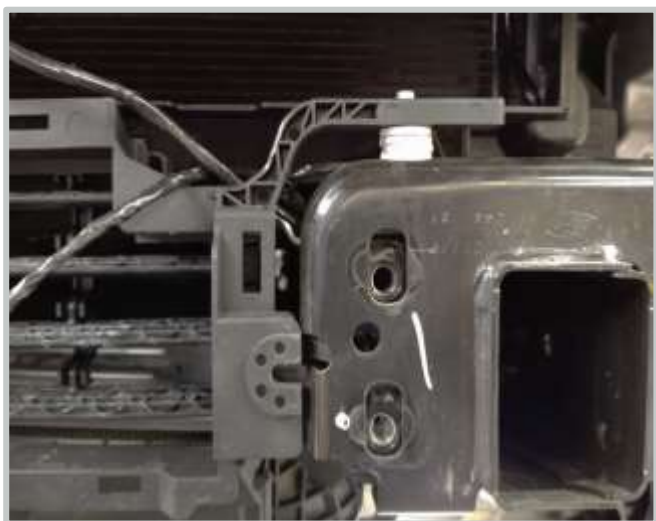
Detach the grille shutter as shown by disconnecting the wiring and 4 bolts. Cut off the lower plastic for clearance to reinstall the A.C.C (see skid plate install guide) .



We will be rising the grille shutters for clearance. Drill in the location as shown (align on the vehicle if needed for location) to reattach to the OEM location and bolt size. Repeat for both sides.

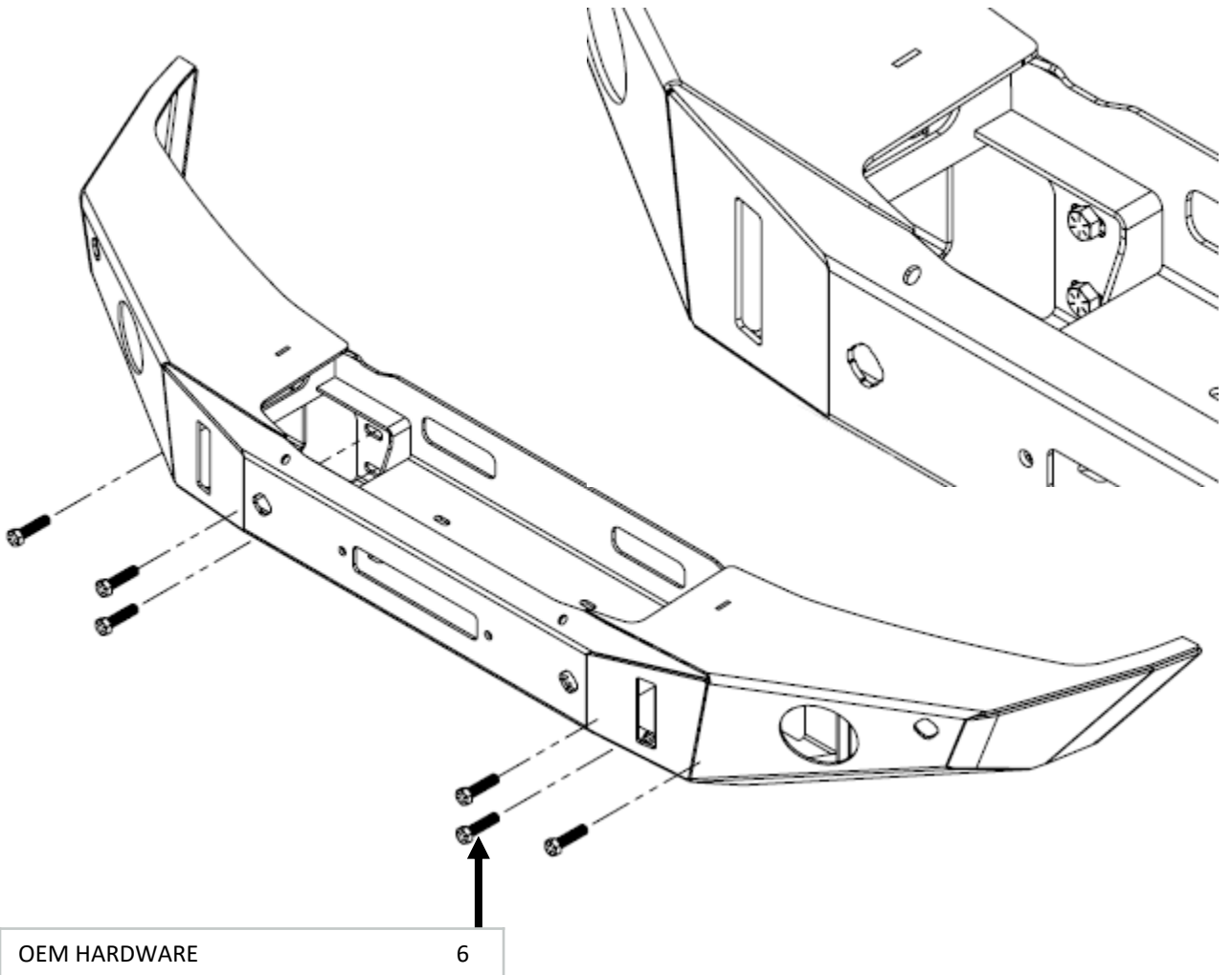
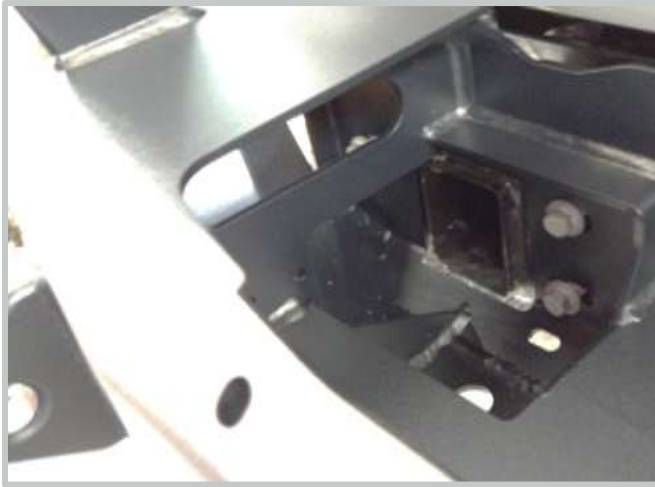


Mount the grill shutter back into place using the provided spacers and longer bolts on top and the new hole location with OEM hardware on the sides. Reconnect the wiring.



7 INSTALLATION OF THE FRONT BUMPER

Mount the bumper as shown. Center the bumper with the vehicle and align gaps between the body and bumper to your preference before mounting. Mount the front bumper using the OEM hardware as shown below. Leave all hardware loose for adjustment



OEM HARDWARE

6

8 TIGHTEN ALL HARDWARE

Check that all hardware is tightened including all brackets and mounting locations.

9 RECONNECT WIRING HARNESS

Reconnect the parking sensor wiring harness to the vehicles electronics and secure all loose wiring. Check that everything is working and adjust if needed before driving on the road.

TIGHTEN ALL HARDWARE AFTER EVERYTHING IS INSTALLED ON THE VEHICLE.

CHECK AND RETIGHTEN ALL HARDWARE AFTER THE FIRST 100 MILES AND AFTER OFF ROADING.

CHECK REGULARLY

ADDITIONAL LINKS

<https://www.exp-one.com/wp-content/uploads/2016/10/Proper-Care-and-Maintenance.pdf>

<https://www.exp-one.com/wp-content/uploads/2016/10/Paint-touch-up-instructions.pdf>

<https://www.exp-one.com/wp-content/uploads/2018/02/Exp-One-2016-TC-word-doc.pdf>