

INSTALLATION GUIDE

Door Tire Mount



Remove OEM tire and tire carrier. make sure to unplug the camera and 3rd break light on the inside of the door behind the plastic pannel. In removing the pannel make sure to pull directly away from the door to minimize clip damage.

Attach door mount plate to back of door as shown in Fig 1A.

You'll need to start from the top and slide it down into position.

Use OEM hardware to mount.

There are two bolt hole locations (see Fig 1B) on each corner of door mount plate that will need to be tightened down with a socket wrench.

FIG 1A



FIG 1B

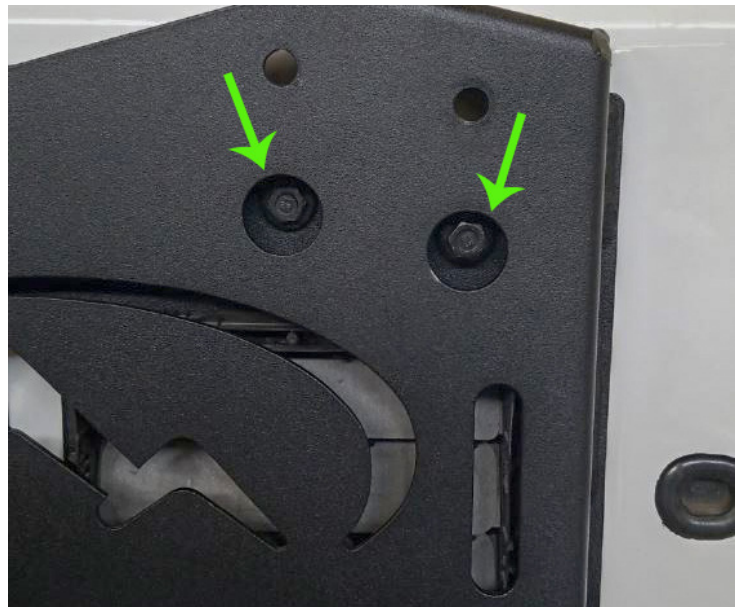


FIG 2A

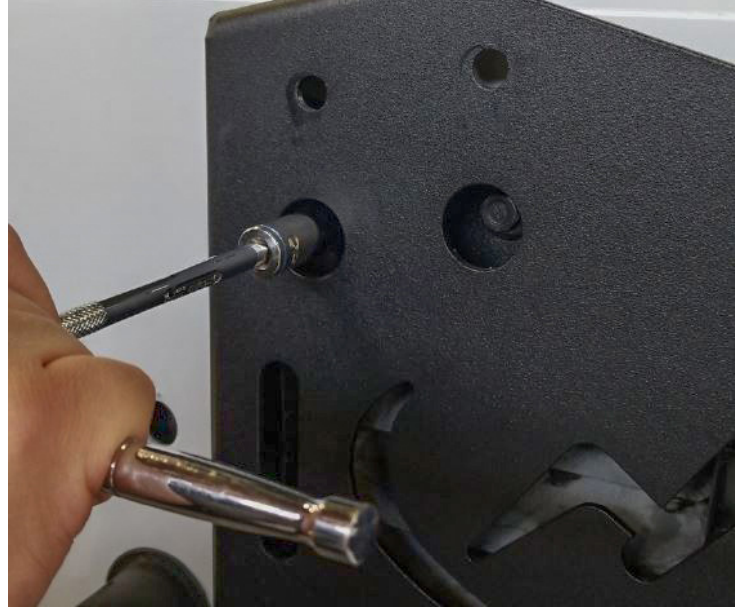
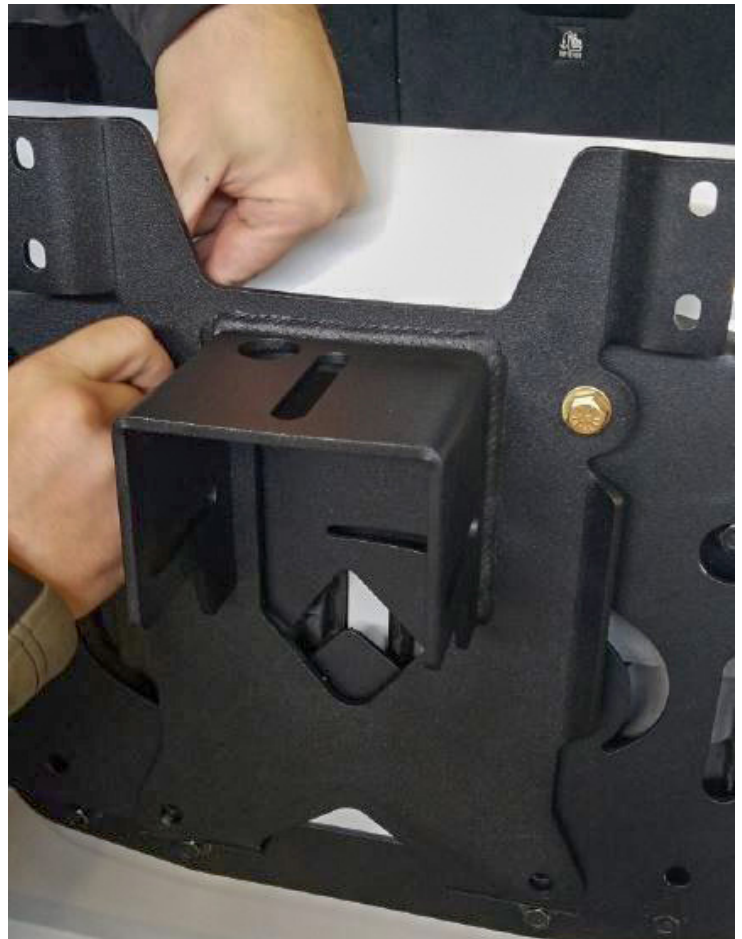


FIG 2B



Next, you'll attach the tire mount bracket onto the door mount plate (Fig 2B) and secure with the 3/8" bolts, nuts, and washers.

*You'll want to start by securing the top bolts first

For the bottom bolts, they will need a bit of 'finesse' to get the nut and washer in from behind.

FIG 3A



FIG 3B

We recommend taking a small strip of masking tape and holding the nut and washer around the wrench



Insert the nut and washer in from behind carefully

FIG 4A



FIG 4B

Once in position from behind, insert the bolt until it starts to thread in place and tighten down.



Remove the OEM camera mount from the carrier. Keep attached to the lug bolt cradle.

Drop the camera mount onto the camera mount bracket (See Fig 5A)

FIG 5A



Insert the two provided bolts and tighten down using the tabs shaped washers to hold the OEM lug bolt cradle in place from the back side.

FIG 5B



FIG 6A



FIG 6B



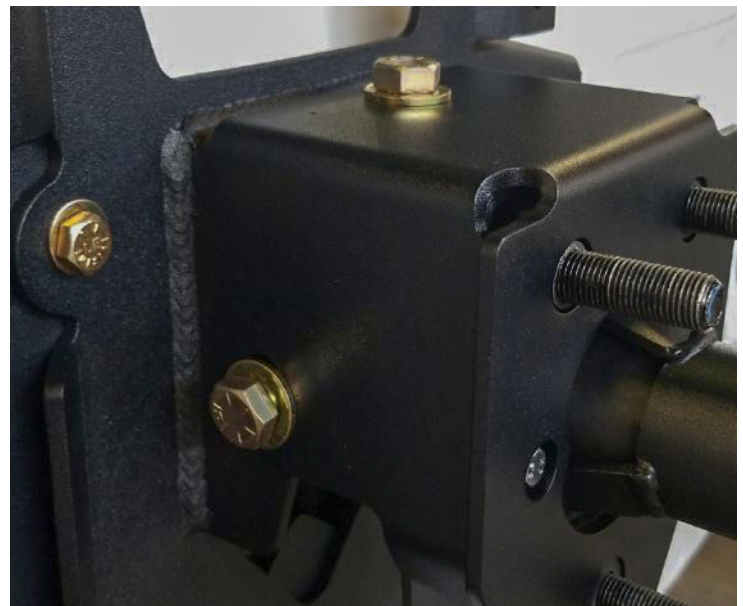
Place camera mount over the tire mount bracket (Fig 6B)

Insert bolts, nuts and washers loosely into position on both sides and one bolt through the top. (See Fig 7A & 7B)

FIG 7A



FIG 7B



Next, you'll need to remove the front plastic cover away from the 3rd brake light stock mount as shown in Fig 8A in order to pull any slack out of the wire length of your 3rd break light. once you've got as much slack out put the breaklight back together.

FIG 8A



FIG 8B

Place the back mount piece into position behind the new door tire mount as shown and mount using OEM hardware. (Fig 8B)



Secure with the stock bolts you removed in Fig 8A as shown in Fig 9A

FIG 9A

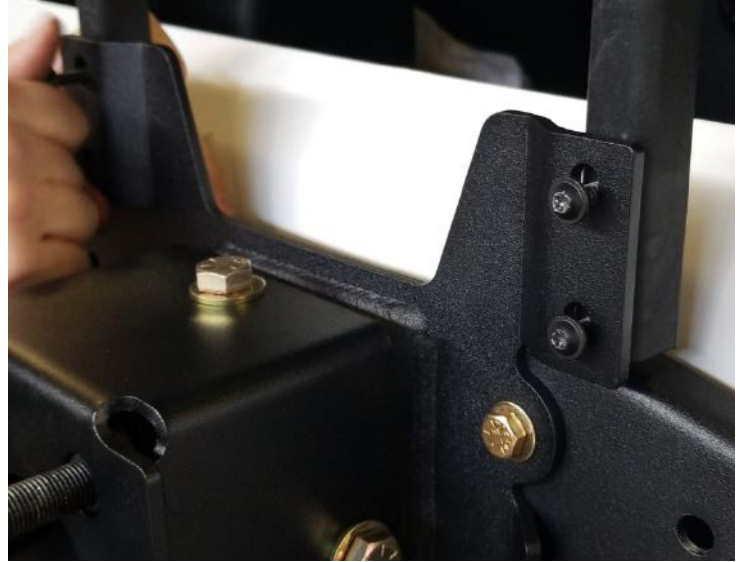


Fig 9B, 10A, and 10B show one potential method in getting the proper back spacing for your tire.

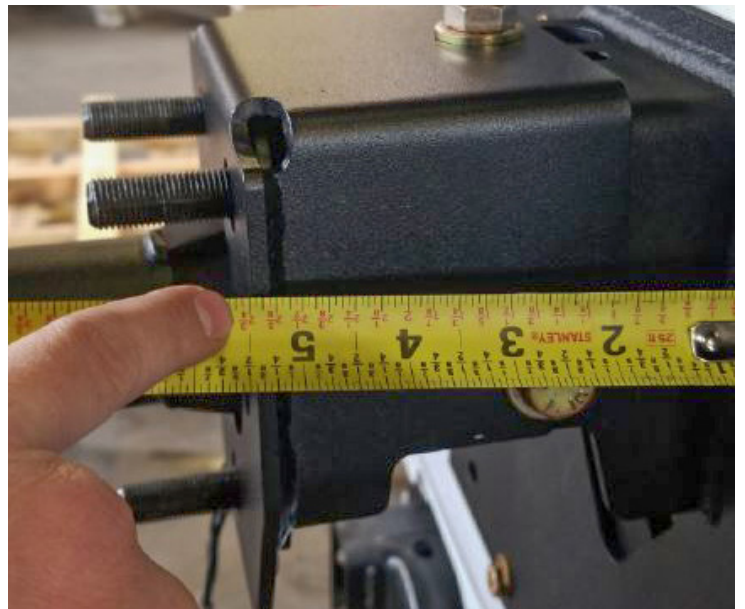
FIG 9B



FIG 10A



FIG 10B



Once your satisfied with your tire mount spacing for the tire, go ahead and secure all bolts into place.

FIG 11A



FIG 11B

Secure your wiring as shown in Fig 11B & 12A and place spare tire onto the mounting system!



FIG 12A



FIG 12B

