



INSTALLATION GUIDE

FORD SUPER DUTY BASE REAR BUMPER 17+

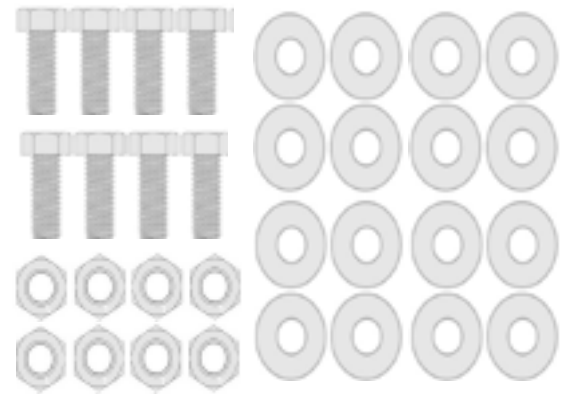
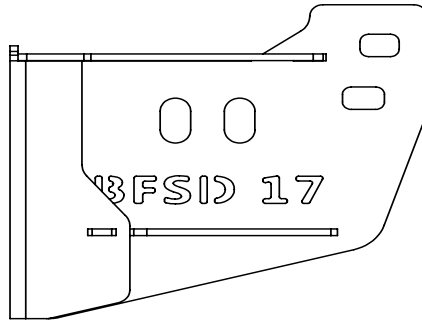
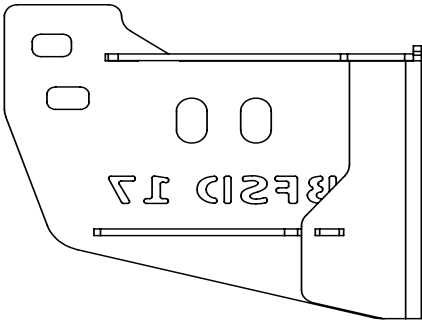


CONTENTS

CONTENTS

Bumper Hardware	Page 2
Bumper Removal & Assembly	Page 3
Bracket Mounting	Page 4
Bumper Mounting	Page 5

REAR BUMPER HARDWARE NOT TO SCALE



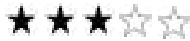
Mounting Brackets

License Plate Lights	2
Connectors	8

Hardware

1/2"-13 X 1 1/4" Hex Cap Bolt	8
1/2"-13 Nyloc Nut	8
1/2" USS Washer	16

SKILL LEVEL - 3 STARS



1 STAR	★☆☆☆☆
2 STARS	★★☆☆☆
3 STARS	★★★☆☆
4 STARS	★★★★☆
5 STARS	★★★★★

EASY - No tools required

BASIC - Requires standard tools, basic mechanical knowledge and understanding

MODERATE - Requires standard tools. Some drilling and/or cutting.

ADVANCED - Requires speciality tools. Drilling, cutting, and/or welding

EXPERT - Professional installation recommended.

DISCLAIMER

Expedition One is not responsible for any damages to vehicle or injury.

We always recommend professional assistance when installing our vehicle products.

- 2 Always follow safety precautions including the use of safety gear and devices.

BUMPER REMOVAL

1 REMOVAL OF OEM BUMPER

Remove the rear bumper OEM hardware from the vehicle. Disconnect all wiring harness connectors (Drivers side license plate area) and remove the parking sensors from the bezels. Be careful not to break any clips or parts of the bezel as they will be reused in the new bumper (Remove the bezels once the bumper is removed). Check for any remaining hardware connecting the bumper. Remove the bumper by pulling it away from the vehicle.



Save the hardware (bolt plates and nuts) from the original mounting area (circled) as these will be used to mount the brackets for the new bumper.

BUMPER ASSEMBLY

2 WIRING HARNESS INSTALLATION

Reinstall the wiring harness into the new bumper. Place all wiring out of the way of mounting points and hardware locations. Check that the wiring loom connectors match their original points of connection per each side of the vehicle. Reattach all bezels and sensors.

3 LICENSE PLATE LIGHT INSTALLATION

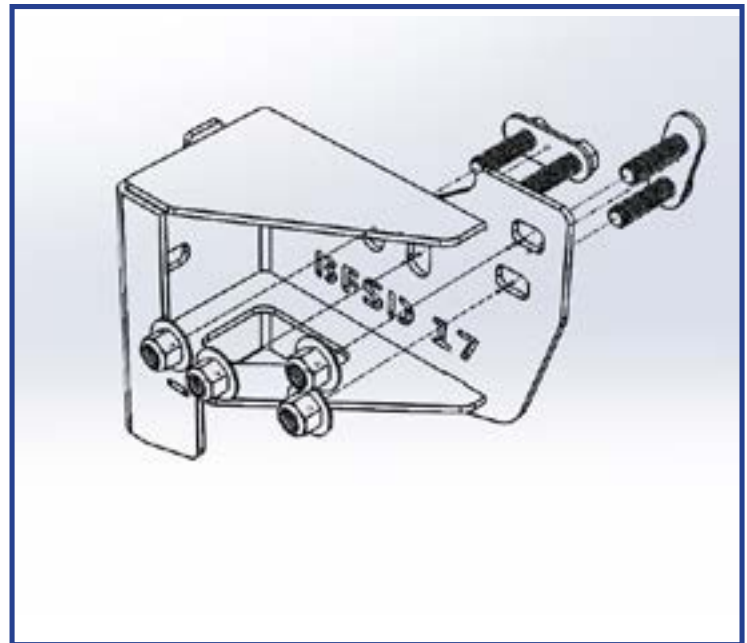
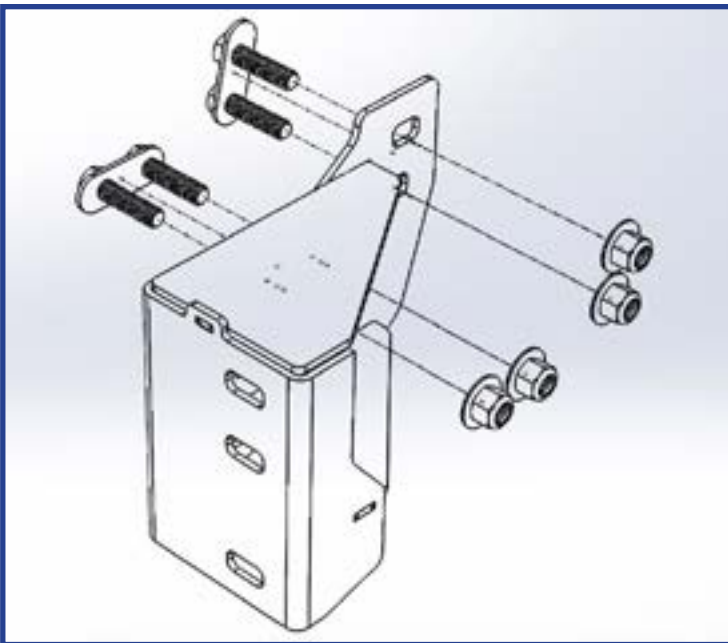
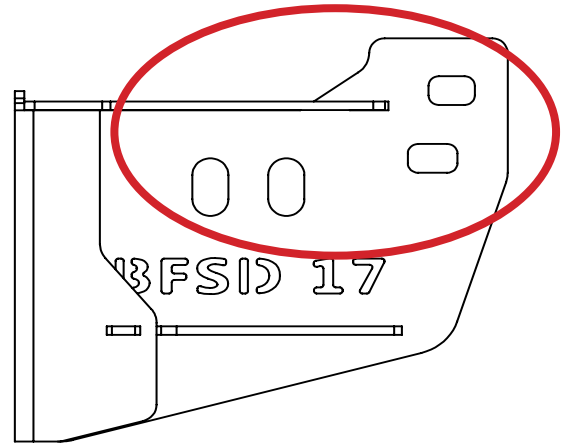
Remove the original license plate lights by cutting off a small section of wire. Attach one set of connectors to the original wiring loom, connecting the opposite set to the provided lights. Insert the provided license plate light into the bumper. Connecting the wiring loom and light wires via the connectors. Do not match wiring by color, it is likely that you will need to connect opposite or different colors.



BRACKET MOUNTING

3 LICENSE PLATE LIGHT INSTALLATION

Install the mounting brackets as shown to the frame using the original bolt plates and nuts (circled area). Repeat for the other side. Leave all hardware loose for adjustment.

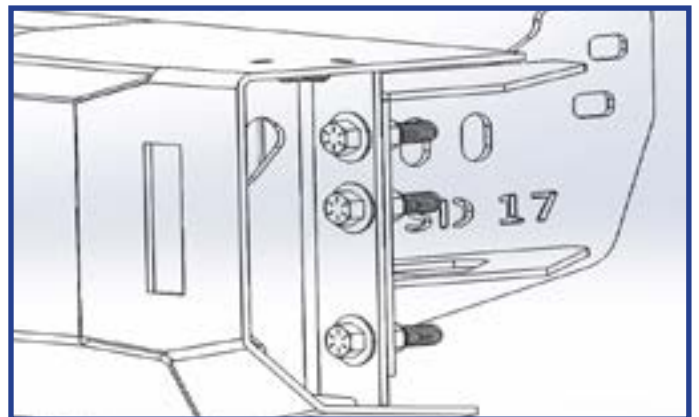
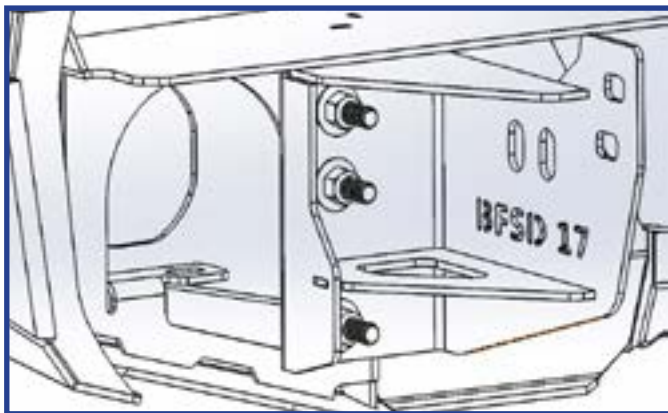
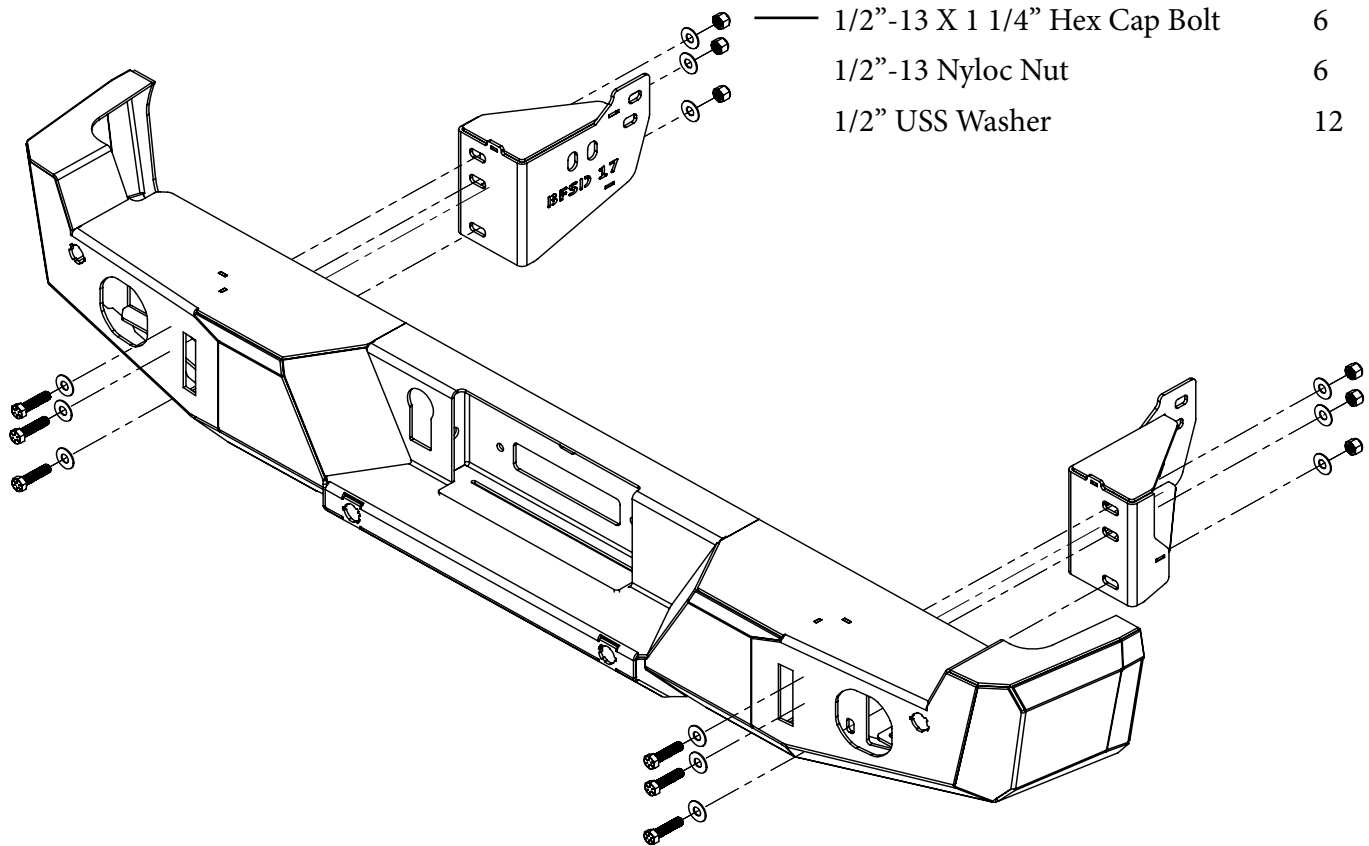


BUMPER MOUNTING

4 BUMPER INSTALLATION

Mounting the bumper as shown to the brackets using the provided 1/2" hardware. Repeat for the other side. Leave all hardware loose for adjustment.

Once in place center the bumper with the vehicle and align gaps before tightening all hardware.



5 CONNECT WIRING

Reconnect the parking sensors and wiring harness to the vehicles electronics.