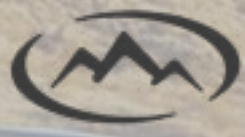


INSTALLATION GUIDE

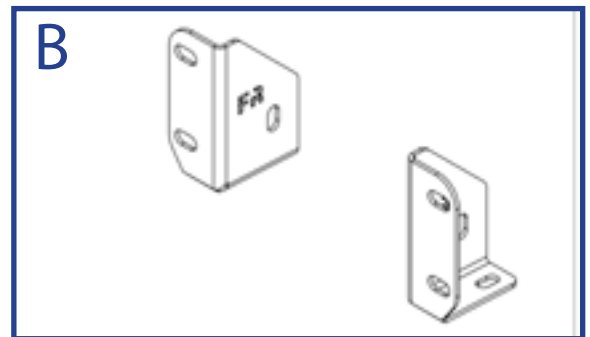
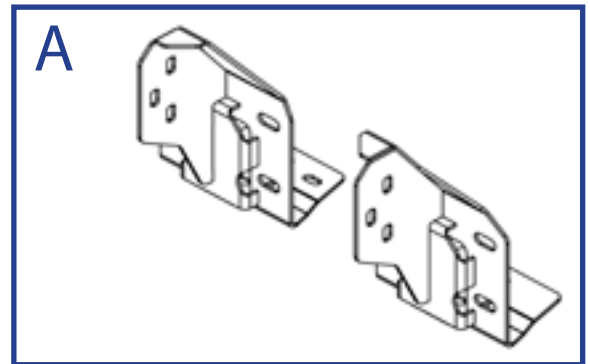
FORD RANGER FRONT BUMPER



CONTENTS

HARDWARE

ITEM	QTY
<u>A</u> Front Bumper Mounts	2
<u>B</u> Reinforcement Brackets	2
Ranger Front Bumper Hardware Kit	1
1/4" - 20 X 3/4" Hex Cap Bolt	2
1/4" - 20 Nyloc Nut	2
1/2" - 13 X 1" Hex Cap Bolt	8
1/2" - 13 X 1 1/4" Hex Cap Bolt	12
1/2" - 13 Nyloc Nut	16
1/2" - USS Washer	36
3/8" - 16 X 3 1/4" Hex Cap Bolt	2
3/8" - 16 Nyloc Nut	2
3/8" - USS Washer	2
Marker Light Brackets	2
Front Bumper Sensor Plugs	4



SKILL LEVEL - 4 STARS



- 1 STAR ★☆☆☆☆
- 2 STARS ★★☆☆☆
- 3 STARS ★★★☆☆
- 4 STARS ★★★★☆
- 5 STARS ★★★★★

- EASY - No tools required
- BASIC - Requires standard tools, basic mechanical knowledge and understanding
- MODERATE - Requires standard tools. Some drilling and/or cutting.
- ADVANCED - Requires speciality tools. Drilling, cutting, and/or welding
- EXPERT - Professional installation recommended.

DISCLAIMER

Expedition One is not responsible for any damages to vehicle or injury.
We always recommend professional assistance when installing our vehicle products.

Always follow safety precautions including the use of safety gear and devices.

FRONT BUMPER REMOVAL

1 REMOVE LOWER FASCIA

Disconnect the wiring harness for the front bumper. Remove sensors from the bezels and disconnect front fog lights if applicable. Start by removing the lower fascia by undoing the clips and prying it away from the bumper.



2 BUMPER REMOVAL

Remove the hardware connecting the bumper to the frame and pull the bumper off the vehicle.



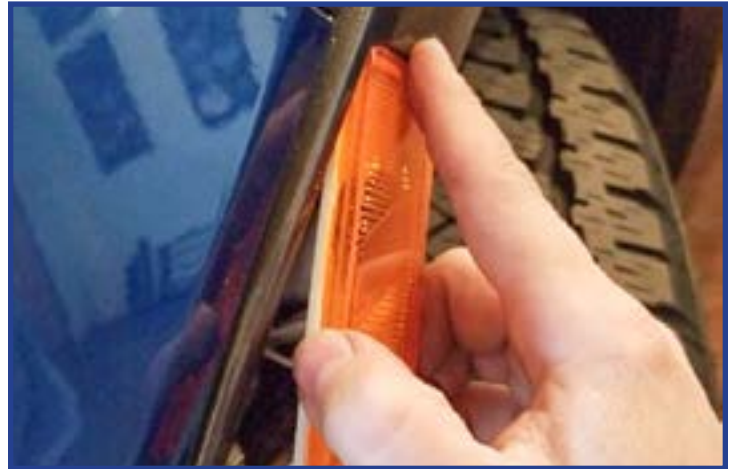
3 OEM HARDWARE REMOVAL

Undo the center bolt on each side located behind the frame mount as shown below. Then remove the hardware mount unit on the frame mount by cutting away the metal trim pieces.



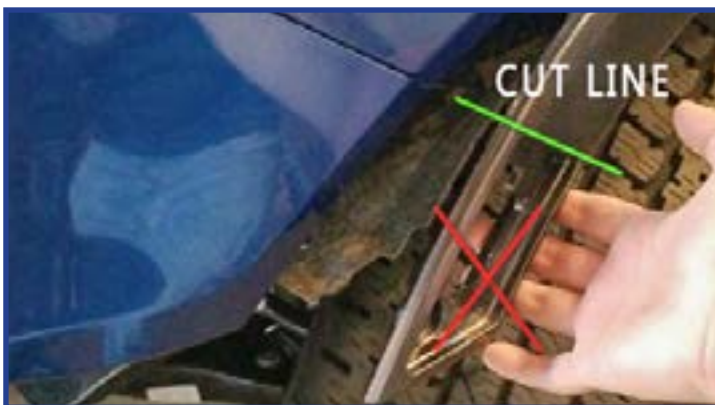
4 SIDE MARKER REMOVAL AND INSTALL

Remove the front side marker by pinching the clip and pull it out of the housing. Reinstall the side marker into the new bumper using the provided bracket as shown below. Mount using the provided 1/4" hardware.



5 FENDER TRIMMING

With the corner light removed, cut off the original location as shown to make room for the new bumper.



6 GRILL REMOVAL

Undo the clips located behind the grille on both sides. Remove the two bolts either side of the grille as shown looking from above. Finally remove the grille by pulling it away from the vehicle.



With the grille removed, pull the front fascia off as shown at right from the vehicle.



7 SKID PLATE AND TOW HOOK REMOVAL

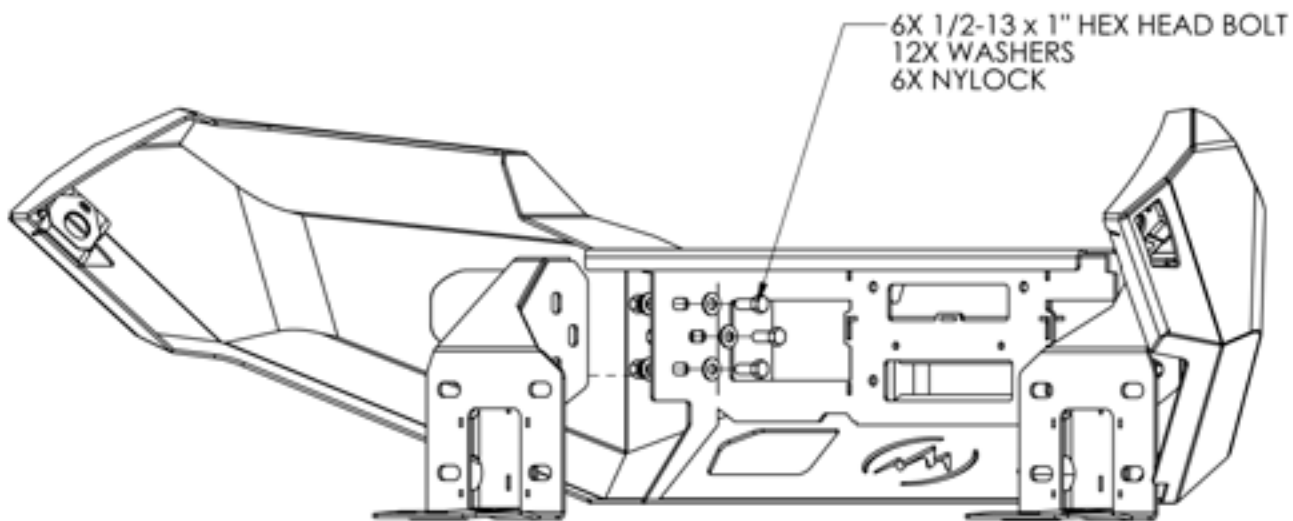
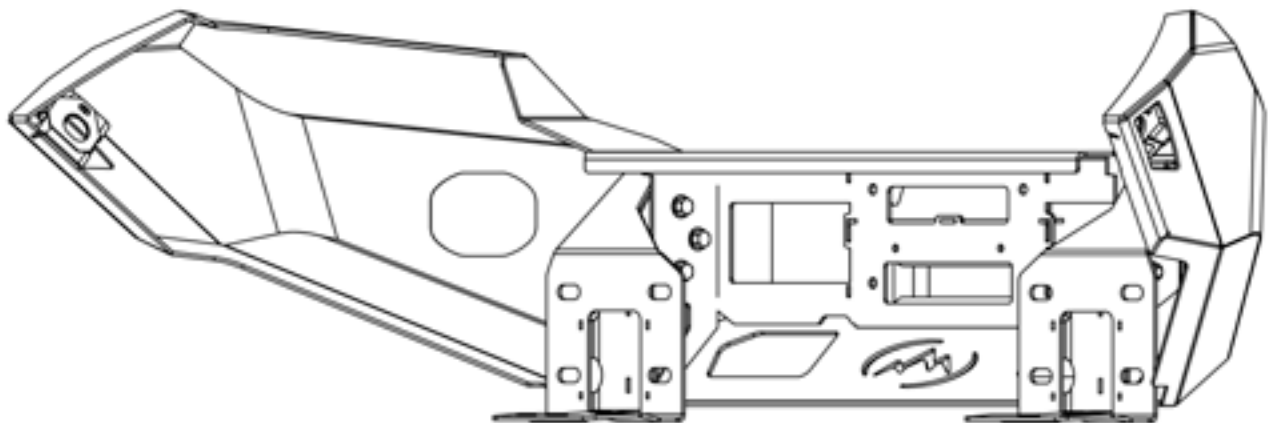
Remove both the stock skid plate and tow hooks from the front bumper.



FRONT BUMPER INSTALLATION

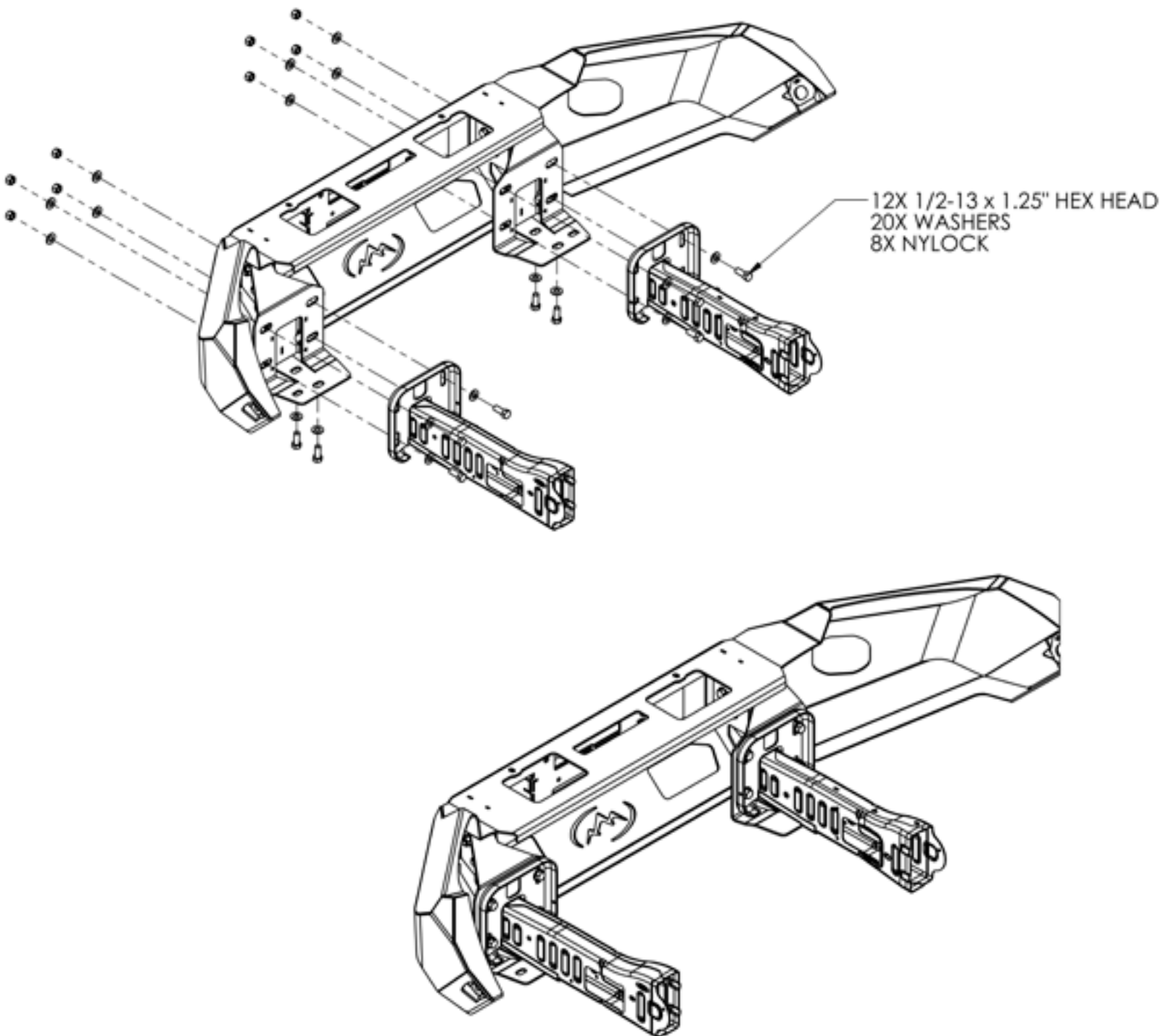
8 FRAME MOUNT INSTALLATION

Attach the mounting brackets as shown with the provided 1/2" hardware. Repeat for the other side, and leave hardware loose for adjustment.



9 BUMPER MOUNTING

Mounting the bumper as shown to the frame. Attach the bumper and mounts to the frame using the hardware shown. Do not tighten the hardware.



10 BUMPER MOUNTING

With the bumper attached mount the reinforcement brackets to the back side of the frame mount as shown. Attach with the remaining 1/2" and 3/8" hardware. Align, center and level the bumper with the vehicle. Adjust so that all gaps are even. Tighten all hardware attaching the bumper and brackets. Reconnect the wiring harness and reinstall all sensors and marker lights.

