



**INSTALLATION GUIDE**  
**LEXUS GX460 ROCKER GUARD**



# CONTENTS

---

## HARDWARE

GX460 Rocker Guard	2
Rocker Guard Tread Plates	2
Light Plate Bracket	4

### Hardware

1/4"-20 X 3/4" Button Head Bolt	40
1/4"-20 Nyloc Nut	40
M8 - 1.25 X 35 Hex Cap Bolt	20
5/16"-18 X 3/4" Hex Cap Bolt	4
5/16"-18 Nyloc Nut	4
5/16" X 0.875 USS Washer	28
LED Lights	4
Connectors	8

## SKILL LEVEL - 4 STARS



1 STAR	★☆☆☆☆
2 STARS	★★☆☆☆
3 STARS	★★★☆☆
4 STARS	★★★★☆
5 STARS	★★★★★

EASY - No tools required

BASIC - Requires standard tools, basic mechanical knowledge and understanding

MODERATE - Requires standard tools. Some drilling and/or cutting.

ADVANCED - Requires speciality tools. Drilling, cutting, and/or welding

EXPERT - Professional installation recommended.

## DISCLAIMER

Expedition One is not responsible for any damages to vehicle or injury.

We always recommend professional assistance when installing our vehicle products.

Always follow safety precautions including the use of safety gear and devices.

# STEP REMOVAL

---

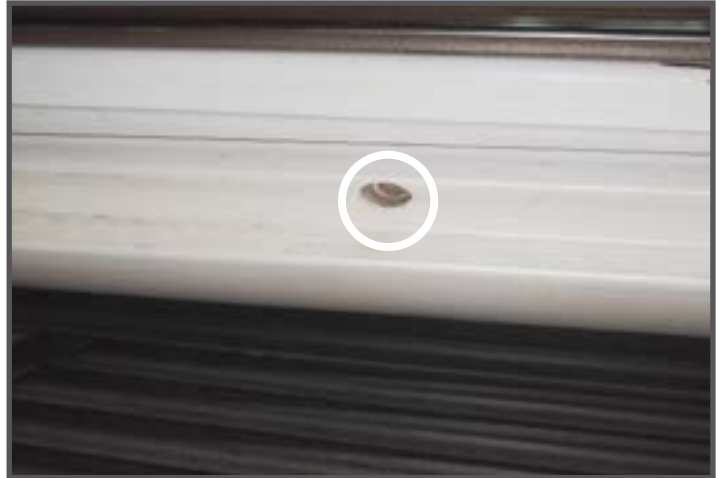
## 1 EXTERIOR HARDWARE REMOVAL

Remove the hardware connecting the step at each end of the wheelwell. Repeat for both Sides.



## 2 DOOR JAM HARDWARE

Unbolt the hardware located at the bottom of the interior door jams on each side of the vehicle.



## 3 HARDWARE AND LIGHT REMOVAL

Disconnect the underside lights at the wire loom connectors. Unbolt the hardware holding the step brackets to the frame. Check for any other hardware or connected wiring before removing. Once completed remove the steps from the vehicle and repeat for the other side. Save the bracket hardware for later.



---

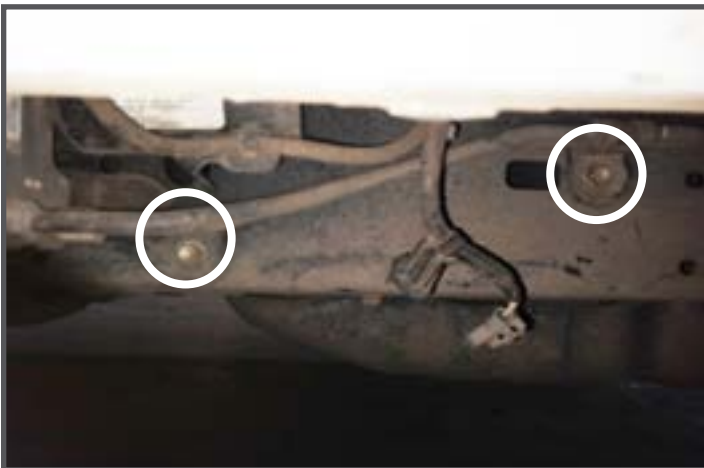
## 4 FRAME COVER PLATES

Remove the cover plates as shown below to gain access to the frame during installation of the rocker guards. Unbolt the OEM hardware and save for reinstallation later.



### MODIFICATION

The cover plates will require cutting to fit with the new rocker guards. It is recommended that the front plate be cut along a similar path as shown. The rear will require test fitting to decide the amount of trim required as vehicles or fit may vary.



### HARDWARE

The driver side will also require the removal of these bolts. Save the hardware for reattaching the brake lines during the rocker guard mounting.

# STEP DISASSEMBLY

---

## 5 PARTS REMOVAL

With the steps removed from the vehicle, start undoing the brackets from the step by removing the hardware on the underside. Once complete the wiring loom can be pulled from the step, some connectors or clips may need undone during this process. Save the loom as it will be used later. Repeat this for each step.



Brackets



Wire Loom

## 6 TREAD PLATE REMOVAL

Pull the tread plate from the steps by starting at the edges and pulling back to pop the clips holding it in.



---

## 7 STEP SHELL REMOVAL

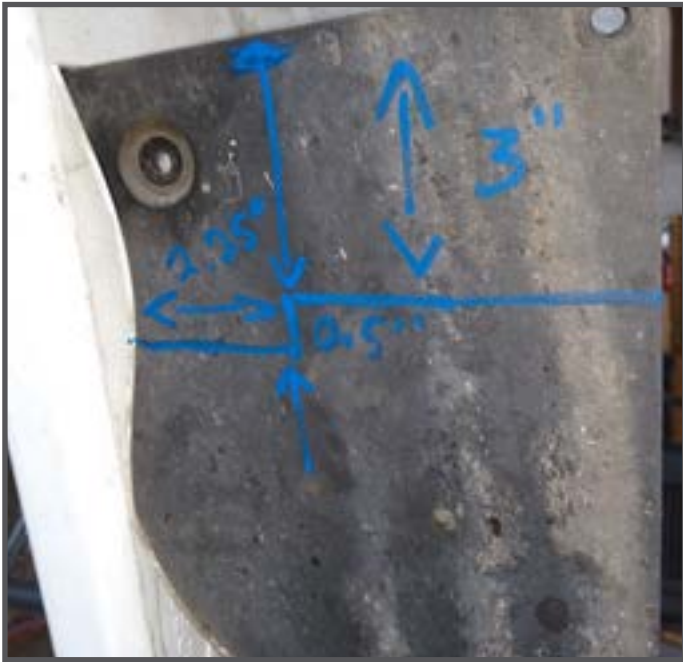
Disassembly the step assembly so that only the exterior body colored shell remains. Start by separating trim parts from the outside shell of the steps. The trim inside will be held together with clips, bolts and tabs that will need to be removed and pulled off on multiple layers of trim. The left over exterior shell is shown below. Be careful not to scratch the shell when removing parts. Repeat for the other side of the vehicle.



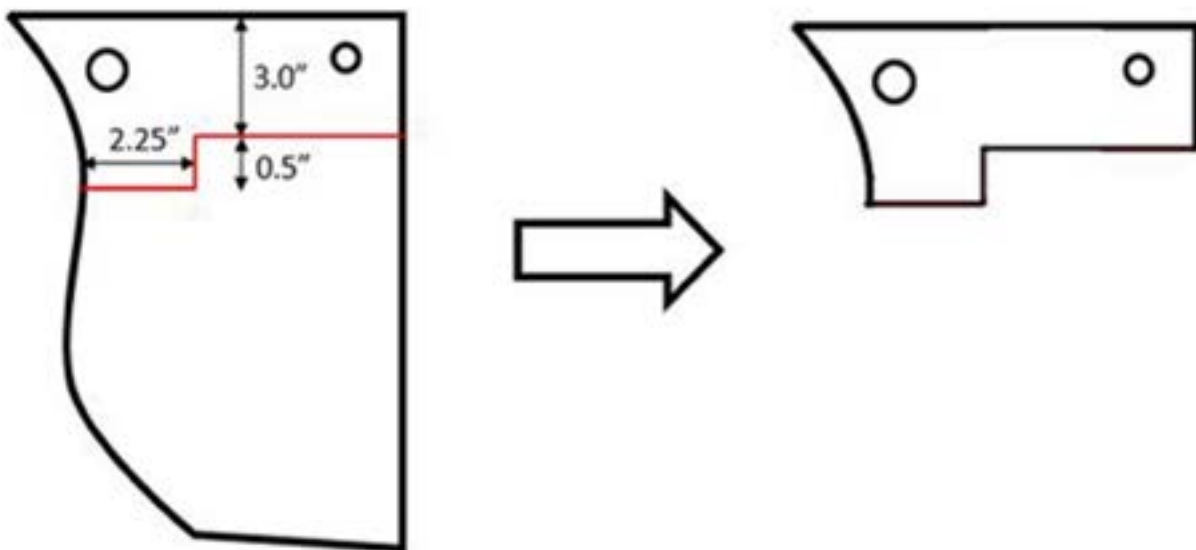
End Result

## 8 FRONT WHEELWELL TRIMMING

To make room for the rocker guards, both ends of the step exterior shell will need to be trimmed to fit before reinstalling. Start by laying out the dimensions as shown for trimming the front wheelwell ends of the step exterior shell.



End Result

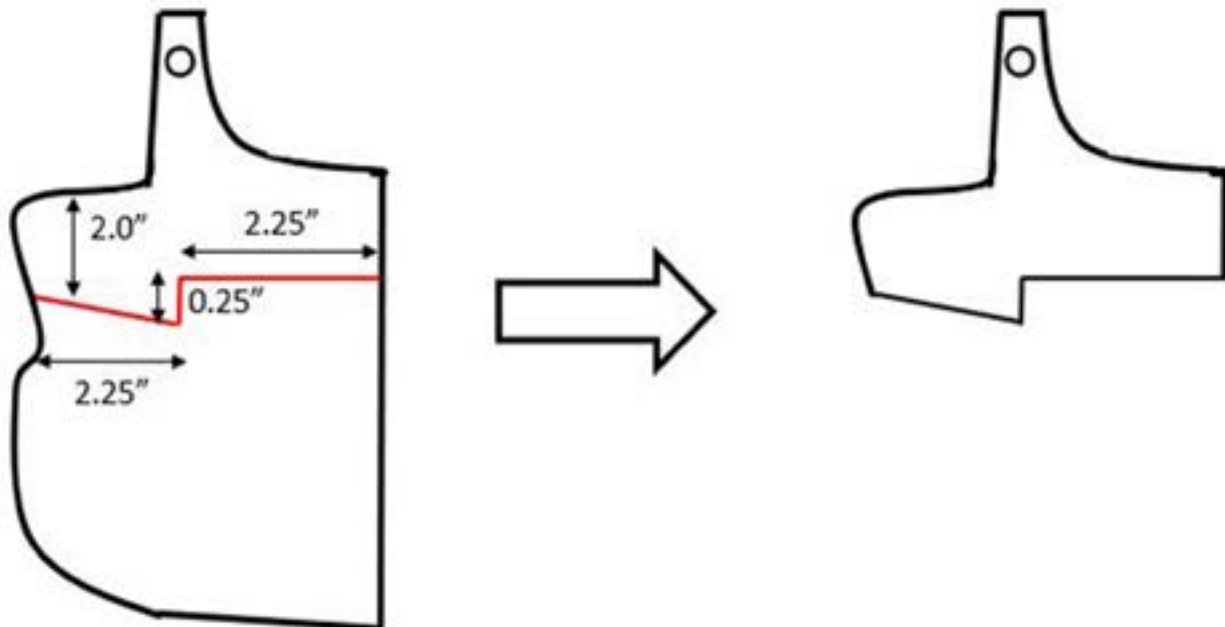


## 9 REAR WHEELWELL TRIMMING

Start by laying out the dimensions as shown for trimming the rear wheelwell ends of the step exterior shell. When drawing the outside facing line, add a slight angle when drawing towards the center.



End Result





---

## 10 CUTTING THE STEP EXTERIOR SHELL

With the wheelwell edges drawn you can begin cutting. Start from the inside edges and cut towards the painted side of the step. Stop once you reach the outside edge and mark a line towards the center of the step exterior shell as shown on the inside. Repeat this step for the other end of the step. Once complete you may finish cutting along lines towards the center of the step. The trim piece connected with tabs may need to be removed to complete cutting. The cuts should also follow lines as shown, meaning the center open center should not require any cutting



## 11 REINSTALL THE STEP

With the cuts complete fix or trim any edges as needed or to your preferences. Reinstall the remain step exterior shell back on the vehicle and mount using the OEM hardware.

# ROCKER GUARD ASSEMBLY

---

## 12 TREAD PLATE INSTALLATION

Install the tread plates on the rocker guards using the provided 1/4" hardware.

## 13 LIGHT PLATE BRACKET MOUNTING

Attach the light plate mounts as shown to the outside cross bars using the provided 5/16" hardware. Check that they are positioned on the top edge or tread plate side of the cross bars facing outwards. Once mounted, insert the LED lights from the bottom edge. Heat shrink the provided connectors to the OEM wire loom and lights. Do not plug in the connectors until everything is installed as wires may not match. Tie down or tuck the wire loom out of the way once the rocker guards are installed.



Driver Side



Passenger Side

# ROCKER GUARD INSTALLATION

---

## 14 INSTALLATION

With the help of a friend Install the rocker guards using the provided M8 bolt and 5/16" Washer hardware. The drivers side will require you to fit the front section behind OEM fixtures and hardware and may need to be held back while installing. Some hole locations may require using the OEM hardware due to threading in the frame. Leave hardware loose for adjustment, making sure the rocker guard is aligned and gaps are even. Tighten once the rocker guard is in place and reinstall the drivers side cover plates.

NOTE - If equipped with KDSS, you will need to unbolt the pump and shim it back so that the drivers side rocker guard can be mounted. Remount the KDSS once completed.



## 15 CONNECT WIRING

Reconnect the under side step lighting and secure the loom to the vehicle or steps to prevent it from hanging from the vehicle.