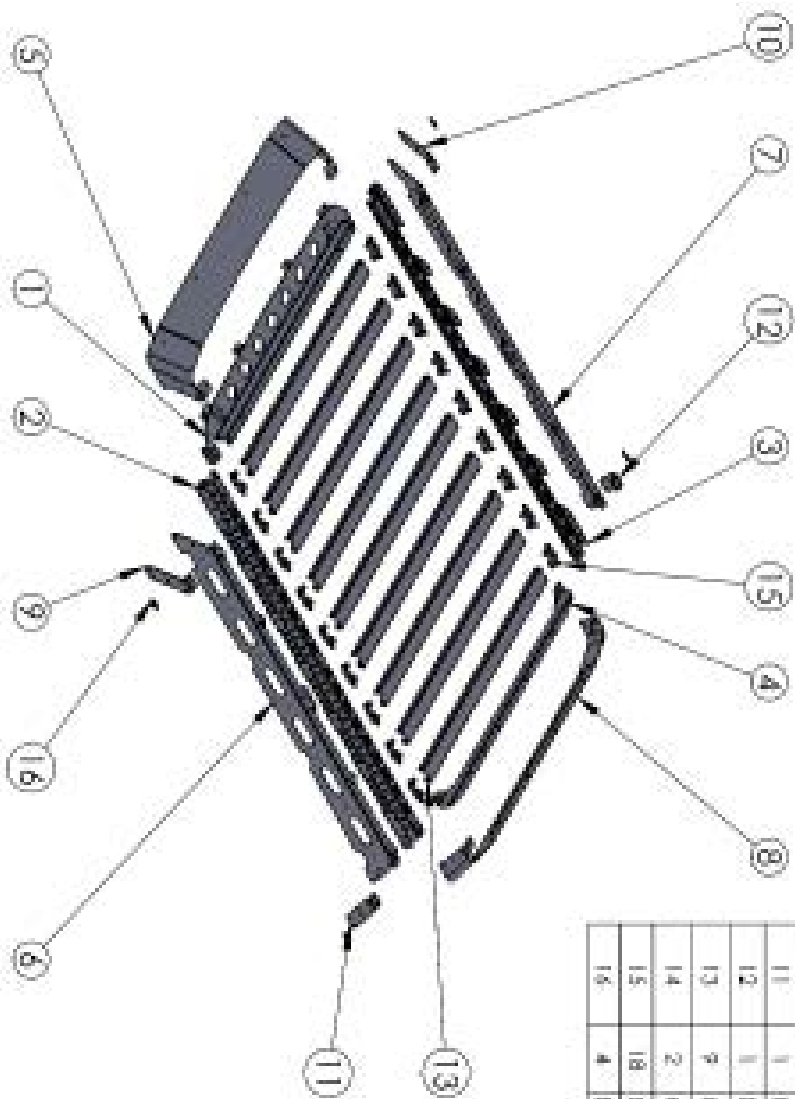


# INSTALLATION GUIDE

## 2018+ JL MULE ULTRA RACK



**EXPEDITION ONE**  
OFF-ROAD RESEARCH & EQUIPMENT



ITEM NO.	QTY	PART NUMBER	DESCRIPTION
1	1	ML-JFPU-Ultra-RX101	FRONT BRACE
2	1	ML-JFPU-Ultra-RX102	LEFT RAIL
3	1	ML-JFPU-Ultra-RX103	RIGHT RAIL
4	1	ML-JFPU-Ultra-RX104	REAR BRACE
5	1	ML-JFPU-Ultra-RX105	FRONT
6	1	ML-JFPU-Ultra-RX107	LEFT SIDE
7	1	ML-JFPU-Ultra-RX108	RIGHT SIDE
8	1	ML-JFPU-Ultra-RX109	REAR
9	1	ML-JFPU-Ultra-RX112	FRONT LEFT SEAM JOINER
10	1	ML-JFPU-Ultra-RX113	FRONT RIGHT SEAM JOINER
11	1	ML-JFPU-Ultra-RX114	REAR LEFT SEAM JOINER
12	1	ML-JFPU-Ultra-RX115	REAR RIGHT SEAM JOINER
13	9	MLU-RKX-Spreader-JIPR-JI-RXCHLE	SPREADER
14	2	mule_badge	MULE LOGO BADGE
15	18	ML-Ultra-Spreader-Bracket	SPREADER BRACKET
16	4	EXPERIMON BA-GS MEDAYON	MEDAYON



**NOTE**

Due to the nature of aluminum, rack pieces including fascia parts may require time to “relax” or return to shape before mounting. Do not force parts into place. Leave all hardware loose before tightening to allow for adjustment.

# Roof Rack Assembly

1

Lay out the front internal fascia frame and side support braces as shown and secure with provided 5/16" bolts and nuts. (see steps 1-4). See photos in steps 1-4



2



**ATTENTION:** When assembling the Mule Ultra Rack, remember to hand-tighten all bolts relatively loose until the very end of the install. This allows everything to fit into place before everything is tightened down.

3



4



5

Attach rear reinforcement brace to front internal fascia frame as shown with 5/16" bolts. Repeat on both sides and keep bolts loose.



6



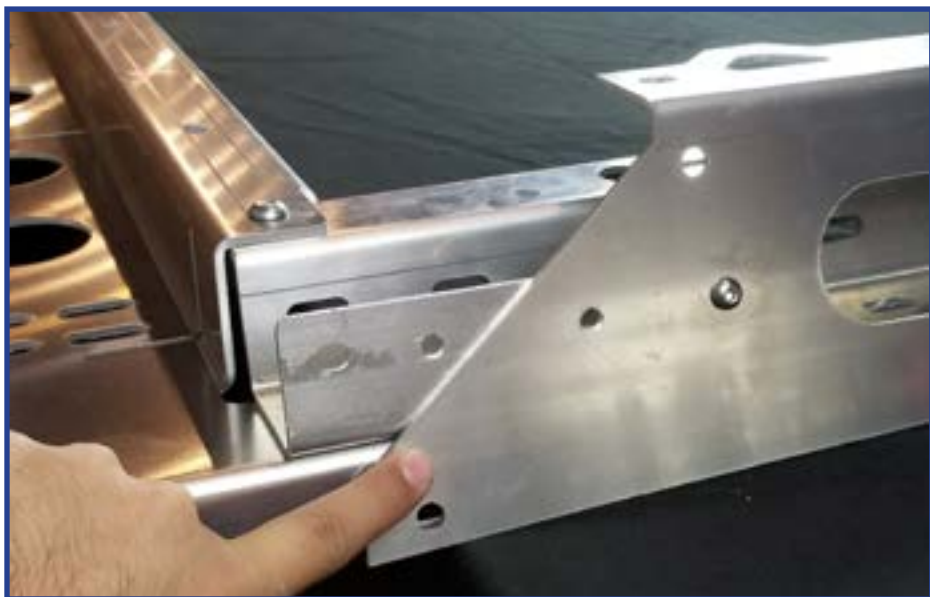
7

Lay out side fascia pieces and attach with 1/4" bolts (remember to hand tighten but keep loose).



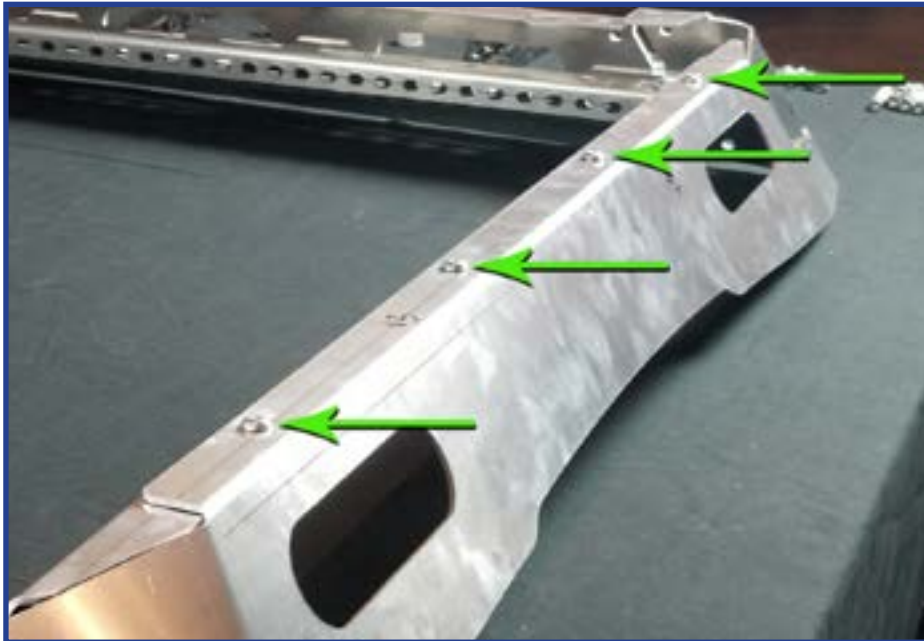
Shallow angle faces towards front end of roof rack as shown below

8

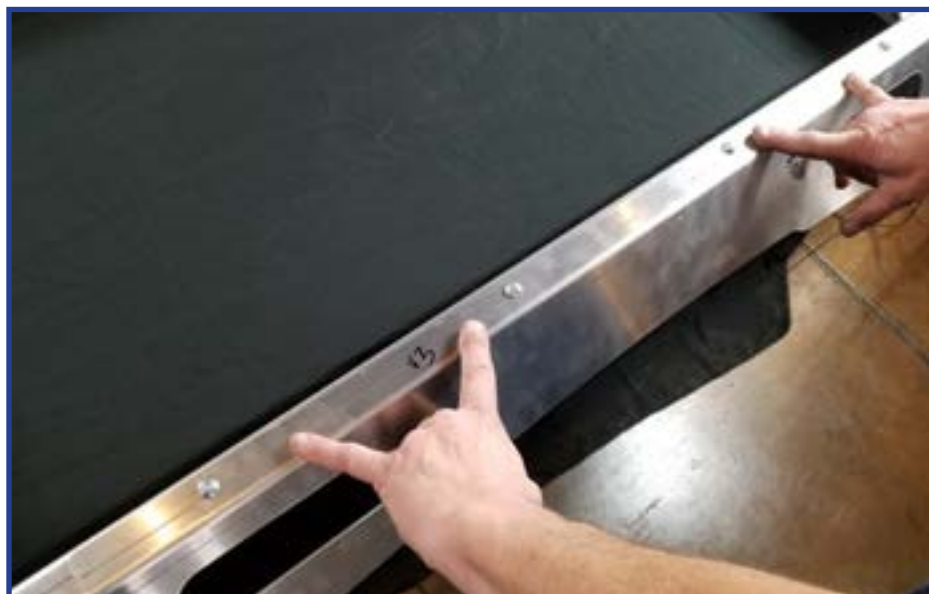


9

Attach rear fascia with 5/16" bolts and nuts as shown in steps 9-10

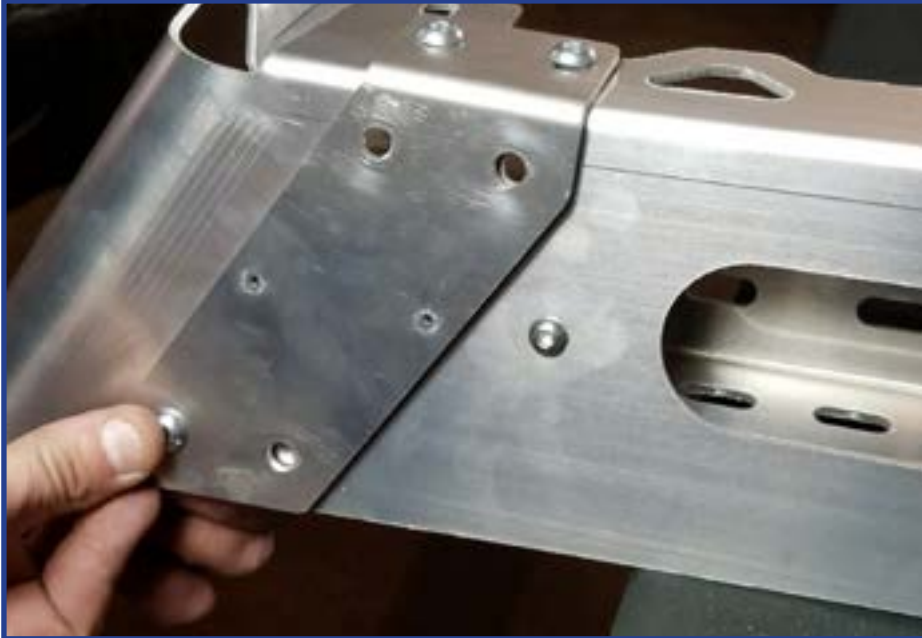


10



11

Next attach rear corner connectors with 5/16" bolts shown in photo below. (remember to hand tighten but keep fairly loose!)



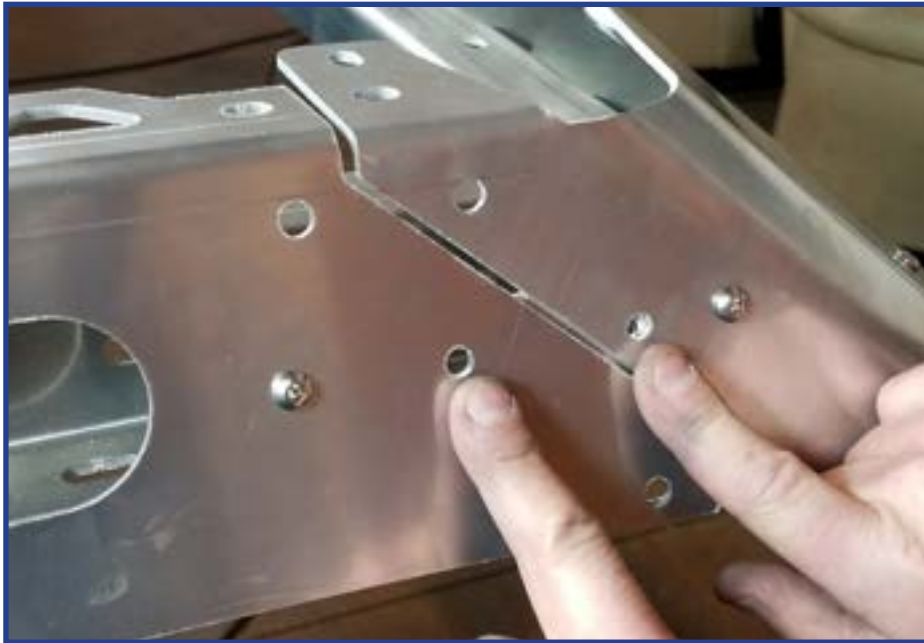
12





13

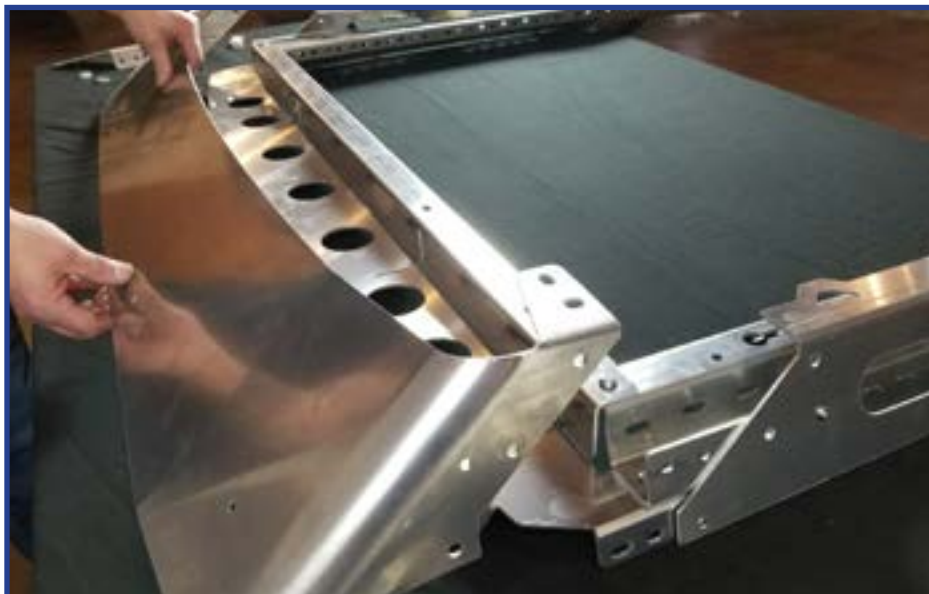
IMPORTANT: Make sure not to put any bolts in the holes pointed at below!



Attach front fascia piece shown bottom left photo along with a single spacer piece for each hole.

NOTE: If you bought fascia with light bar cutout, we recommend installing light bar prior to installing front fascia to make things easier.

14



15

Adding spacers for front fascia (shown below) is optional for those that want a slight curve for some vehicle platforms.

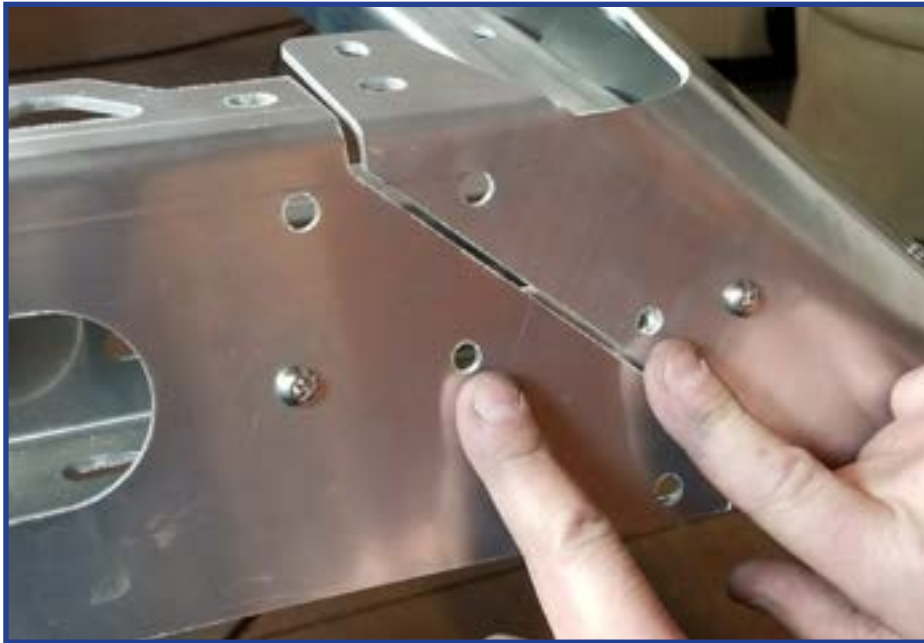


16



17

Attach front corner connectors as shown with 5/16" bolts and nuts, remembering not to place any bolts in the holes pointed at in image below. (hand tighten bolts but keep relatively loose)



Next, attach reinforcement spacers as shown on all 6 hole locations with provided bolts & nuts. There are three mounting hole locations on each side.

18



19

Next, assemble load bars with provided end mounts using nuts and bolts. Keep hand tight but loose.

\*You'll need to angle an open-end wrench from inside while tightening with allen tool



Flip roof rack on its back and attach load bars into desired locations as shown in photo. Using provided nuts and bolts, you may begin tightening down each load bar with two bolts/nuts for each side of load bars as shown.

20



21

Flip over roof rack after all load bars are tightened down with tools and begin tightening all other rack bolts to prepare to mount onto vehicle.



Lastly, place the included front fascia trim on the bottom edge to prepare to be mounted to roof.

22



## Gutter Mount Assembly

23

First, lay out each set of gutter mount systems in front of you. You should have 8 sets of the provided components below.



Next, you'll need to use the included padding and place onto the underside of each gutter mount.

24



25

You will also need to place the smaller padding on the lip of the gutter face plate pieces. These help protect the vehicle's paint when in final clamped position.



Take the cover plate while holding the gutter mount together and drop the provided allen bolt into the threaded opening inside. If your having trouble, we also recommend placing it on the end of a 6mm or 3/4" allen and threading it from an angle.

You just want to get the bolt started but not tightened down as you'll need it loose to slide into the vehicle gutter. See photos in steps 26 & 27.

26





Once all your gutter mounts are prepped, you can now place them on the gutter and tightened a little but still be able to slide them side to side. (4 gutter mounts per side)

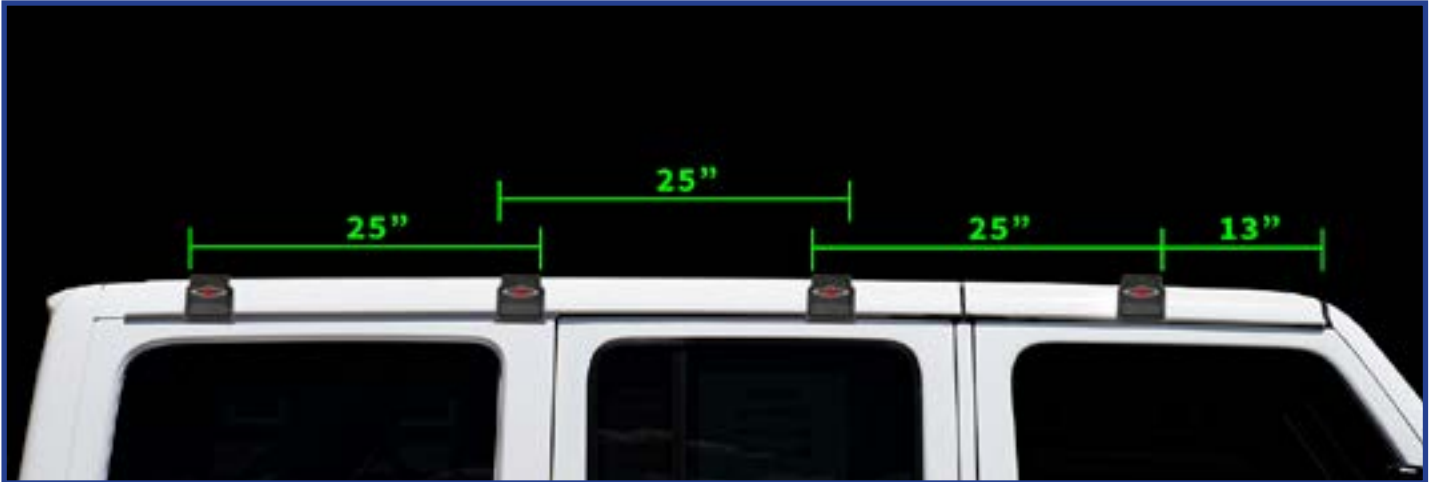




29

Pictured below are the dimensions you'll need to adjust your gutter mounts to. Starting from the front of vehicle where the gutter trim starts, measure out to 13" and place the right edge of gutter mount to the 13" mark. Once in place, go ahead and tighten it down.

Next, from the right edge of the front gutter mount you just tightened, measure out to 25" and place the left side of the next gutter mount in position. Repeat this step for the remaining two, spacing them by 25". Repeat these steps for the driver's side.



As a final rough check of your rear most gutter mounts, it should roughly have around 5 3/4" to 6" of space from the left side of gutter mount to the end of the rear gutter.

30



31

We are now ready to place the rack onto the roof!

With the help of a friend, carefully place the rack into position over the gutter mounts. If the alignment is slightly off, have a friend hold one side so you can loosen the allen bolt and nudge the mounts as needed.



Once the rack is lined up with all gutter mounts, use the provided 1/2" bolts (2 for each mount). Hold the included nut retainer underneath for each gutter mount for the bolts to thread into from the top to secure the roof rack into its final position. (See example photo provided below)

32

**\*IMPORTANT\***

When rack is placed onto the gutter mounts, you will likely see gaps for the front and rear gutter mounts to the rack that will need spacers added to them. Spacers for the two gutter mounts towards the center of vehicle are 'as needed' basis.

