

# INSTALLATION GUIDE

Mule Ultra Rack - RAM 1500 09-18/Classic Crew Cab

RAM 2500 10-18 Crew & Mega Cab



Included Hardware:

- (64) 1/4" Button Head Bolts
  - (64) 1/4" Nuts
- (38) 5/16" Button Head Bolts
  - (38) 5/16" Nuts
  - (6) Load Bars
  - (12) End Caps
  - (6) Sleeves
- (6) 5/16" Button Head Long
  - (6) 5/16" Nuts
  - (8) Riv Nuts
- (8) Rectangle Spacers
  - (8) Round Spacers
  - (8) 5/16" Bolts
  - (8) 5/16" Washers
  - (8) 5/16" Clip Nuts

Tools:

- 1/2" Open Box Wrench
- 3/16" Open Box Wrench
- 5/32" Allen Wrench
- 3/16" Allen Wrench

Skill Level:

3/5 stars (Some drilling required)

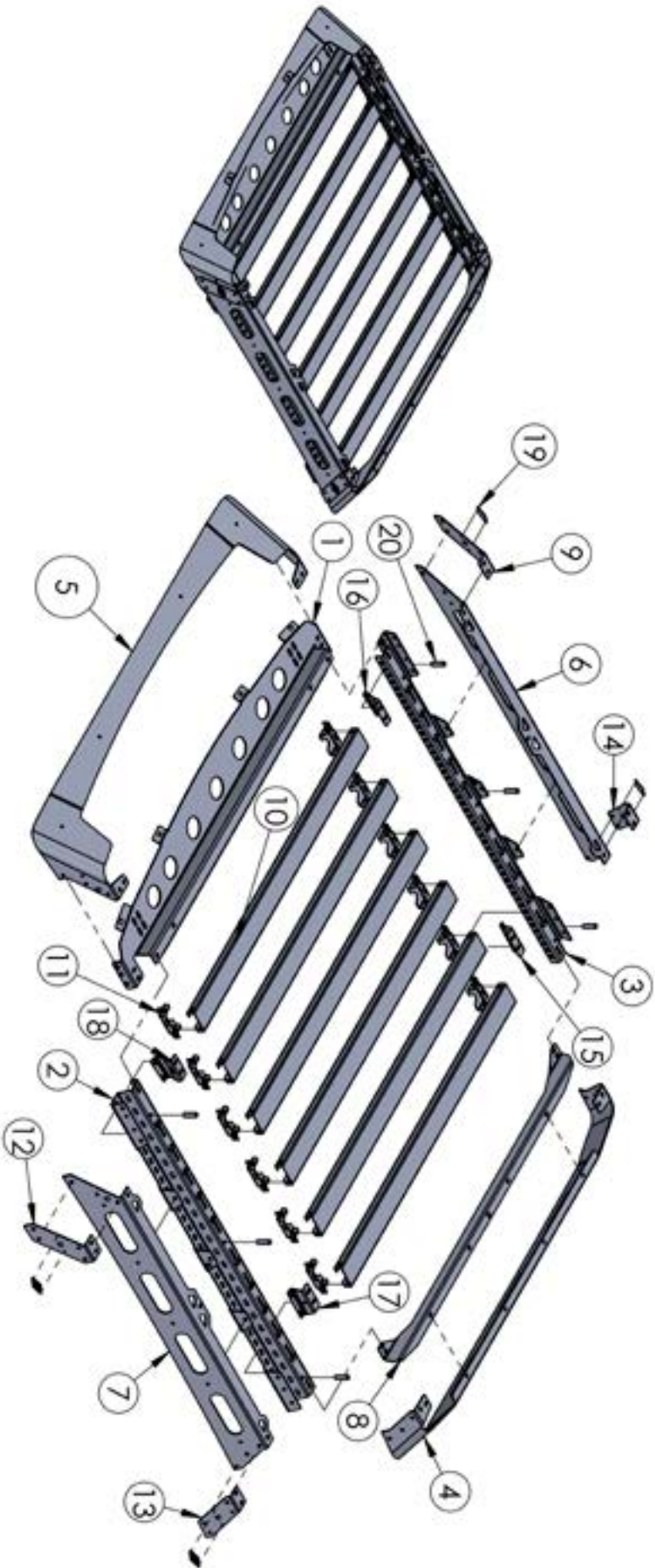
Disclaimer

Expedition One is not responsible for any damages to vehicle.  
We always recommend professional assistance when  
installing our vehicle products.

NOTE

Due to the nature of aluminum, rack pieces including fascia parts may require time to "relax" or return to shape before mounting.  
Do not force parts into place. Leave all hardware loose before tightening to allow for adjustment.

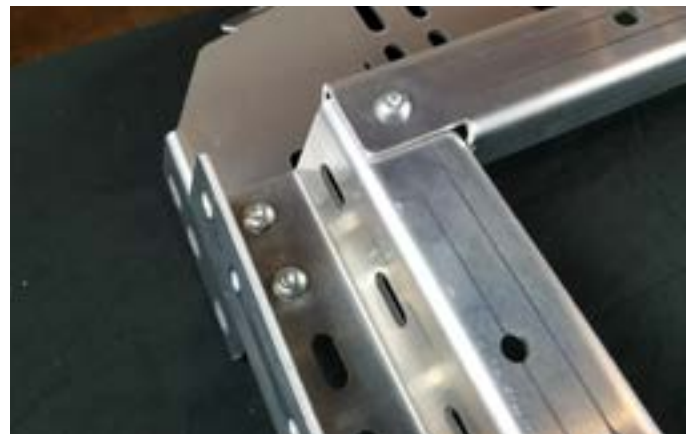
ITEM NO.	QTY.	PART NUMBER	DESCRIPTION	ITEM NO.	QTY.	PART NUMBER	DESCRIPTION
1	1	ML-10RAM-ULTRA-LTBAR-RK101	FRONT BRACE	11	12	ML-10RAM-ULTRA-LTBAR-RK111	SPREADER BRACKET
2	1	ML-10RAM-ULTRA-LTBAR-RK102	INTERNAL RAIL LEFT	12	1	ML-10RAM-ULTRA-LTBAR-RK112	SEAM JOINER FRONT LEFT
3	1	ML-10RAM-ULTRA-LTBAR-RK103	INTERNAL RAIL RIGHT	13	1	ML-10RAM-ULTRA-LTBAR-RK113	SEAM JOINER REAR LEFT
4	1	ML-10RAM-ULTRA-LTBAR-RK104	SHELL REAR	14	1	ML-10RAM-ULTRA-LTBAR-RK114	SEAM JOINER REAR RIGHT
5	1	ML-10RAM-ULTRA-LTBAR-RK105	SHELL LIGHTBAR FRONT	15	1	ML-10RAM-ULTRA-LTBAR-RK115	ROOF MOUNT REAR RIGHT
6	1	ML-10RAM-ULTRA-LTBAR-RK106	SHELL RIGHT	16	1	ML-10RAM-ULTRA-LTBAR-RK116	ROOF MOUNT FRONT RIGHT
7	1	ML-10RAM-ULTRA-LTBAR-RK107	SHELL LEFT	17	1	ML-10RAM-ULTRA-LTBAR-RK117	ROOF MOUNT REAR LEFT
8	1	ML-10RAM-ULTRA-LTBAR-RK109	REAR BRACE	18	1	ML-10RAM-ULTRA-LTBAR-RK119	ROOF MOUNT FRONT LEFT
9	1	ML-10RAM-ULTRA-LTBAR-RK117	SEAM JOINER FRONT RIGHT	19	4	ML-10RAM-ULTRA-LTBAR-RK120	MULE LOGO BADGE
10	6	ML-10RAM-ULTRA-LTBAR-RK110	SPREADER	20	6	ML-10RAM-ULTRA-LTBAR-RK121	SPACER



**ATTENTION:** When assembling the Mule Ultra Rack, remember to hand-tighten all bolts relatively loose until the very end of the install. This allows everything to fit into place before everything is tightened down.

Rack Assembly Installation:

Lay out front and side support braces as shown with provided 5/16" bolts and nuts. (see photo below)



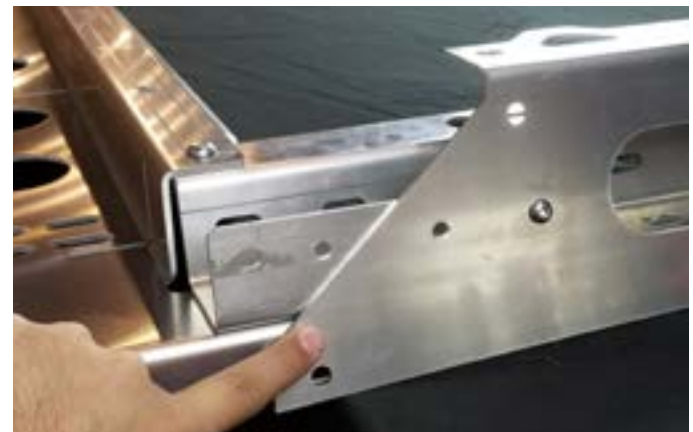


Attach rear reinforcement brace as shown with 5/16" bolts. Repeat on both sides and keep bolts loose.

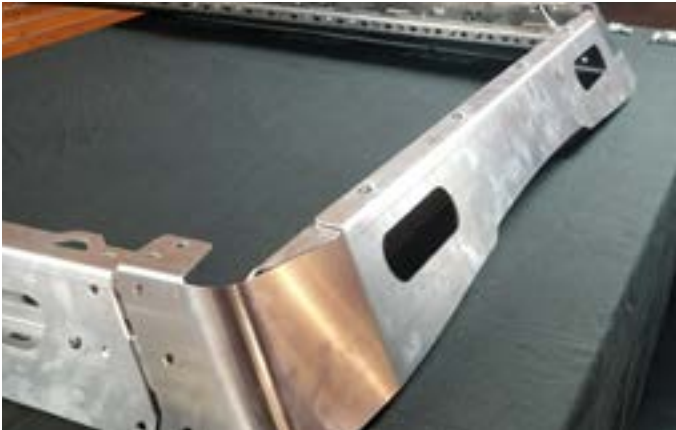


Lay out side fascia pieces and attach with 1/4" bolts (remember to hand tighten but keep loose).

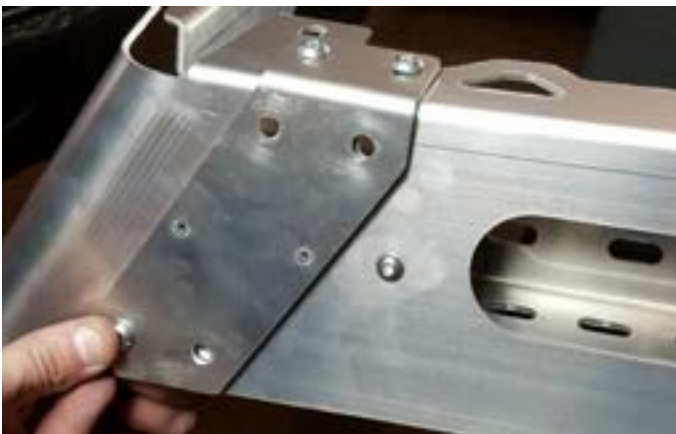
Shallow angle faces towards front end of roof rack as shown in bottom right photo!



Attach rear fascia as shown with 5/16" bolts and nuts.

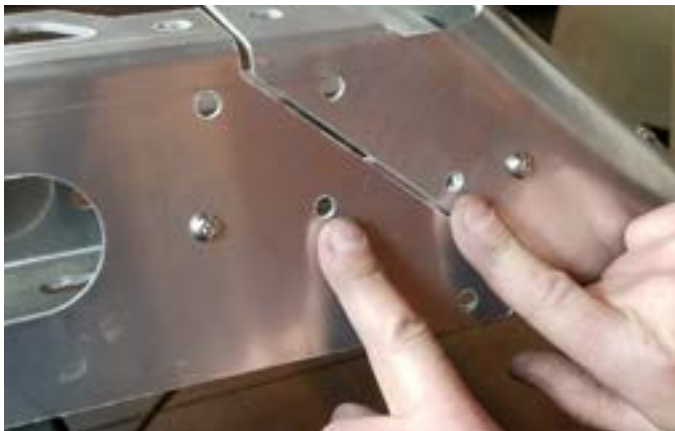
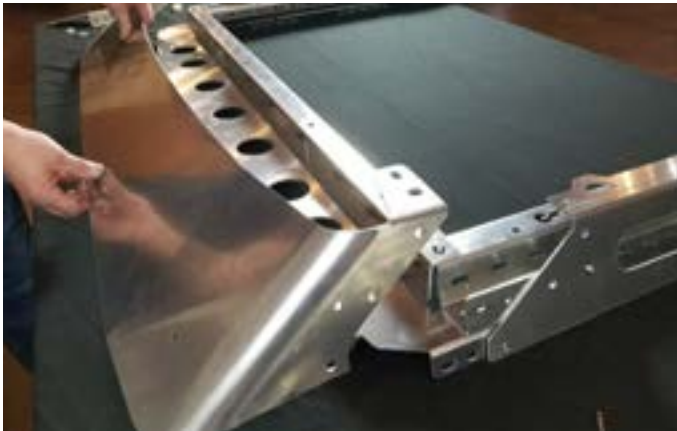


Next attach rear corner connectors with 5/16" bolts shown in photo below. (remember to hand tighten but keep fairly loose!)



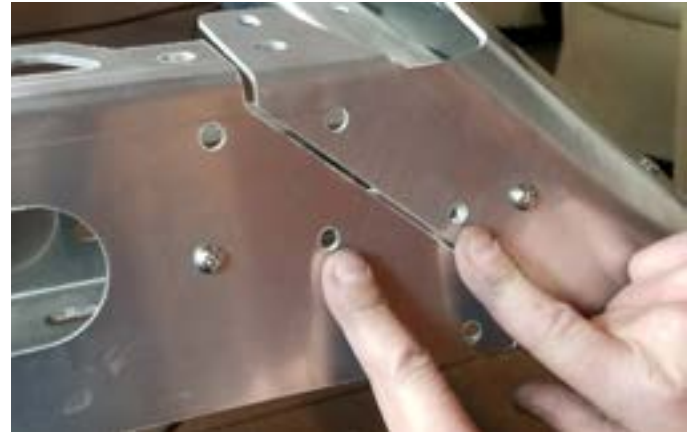
Attach front fascia piece shown bottom left photo along with a single spacer piece for each hole.

NOTE: If you bought fascia with light bar cutout, we recommend installing light bar prior to installing front fascia to make things easier.

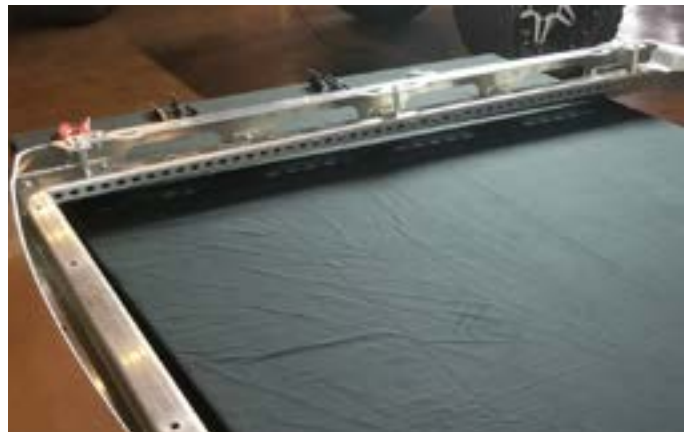


Make sure not to put any bolts in the holes pointed at below!

Attach front corner connectors as shown with 5/16" bolts and nuts, remembering not to place any bolts in the holes pointed at in image below. (hand tighten bolts but keep relatively loose)



Next, attach reinforcement spacers as shown on all 6 hole locations with provided bolts & nuts. There are three mounting hole locations on each side.





Next, assemble load bars with provided end mounts using nuts and bolts. Keep hand tight but loose.



Flip roof rack on its back and attach load bars into desired locations as shown in photo. Using provided nuts and bolts, you may begin tightening down each load bar with two bolts/nuts for each side of load bars as shown.



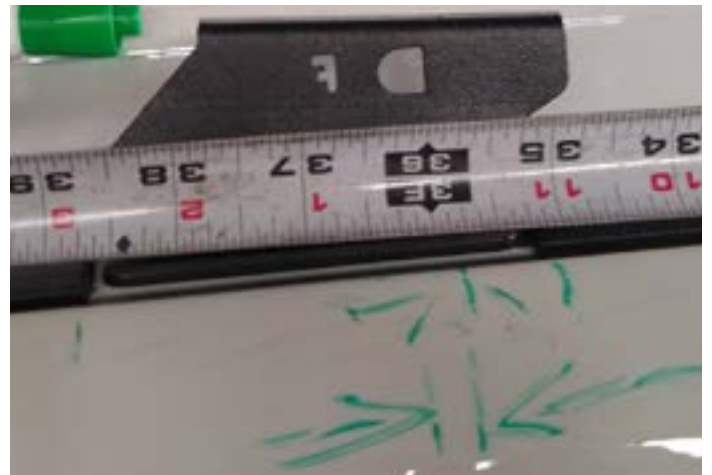
Flip over roof rack after all load bars are tightened down with tools and begin tightening all other rack bolts to prepare to mount onto vehicle.

Roof Rack Mounts Install Crew Cab

Measure from the end of the roof trim piece seam at the rear of the vehicle (circled) to 2 1/4" to the center of the first hole location. Placing the mounting bracket on the roof, and mark with a sharpie the ends of the mount where you'll need to cut the rubber trim. Verify the hole location before cutting and repeat for the other side of the vehicle.



For the front mounts, measure from the middle of the 2nd bolt hole location of rear roof mount (closest to front of vehicle) as shown below and measure to the 35 7/8" mark for the center of the first hole location. Placing the mounting bracket on the roof, and mark with a sharpie the ends of the mount where you'll need to cut the rubber trim. Verify the hole location before cutting and repeat for the other side of



## Roof Rack Mounts Install Mega Cab

Measure from the start of the roof trim piece seam at the front of the vehicle (circled) to 17" to the center of the first hole location. Placing the mounting bracket on the roof, and marking with a sharpie the ends of the mount where you'll need to cut the rubber trim. Verify the hole location before cutting and repeat for the other side of the vehicle.



For the rear mounts, measure again from the start of the roof trim piece seam at the front of the vehicle (circled) to 61 1/4" for the front of the rear mount and 65 1/4" for the end of the rear mount. Placing the mounting bracket on the roof, and mark with a sharpie the ends of the mount where you'll need to cut the rubber trim. Verify the hole location before cutting and repeat for the other



With a razer or other sharp tool, begin cutting the rubber trim off for all roof mount locations. With the molding cut out, place the mounting bracket into the opening and mark your holes with a sharpie for drilling. Repeat for all mount locations.

\*We recommend putting something on the edge like a spare razer to prevent the blade from hitting the roof paint when cutting across.



We recommend using a Center Punch tool to punch a small hole where you will be drilling so your drill bit doesn't slide out of place.

Once you've punched the drill locations, begin drilling carefully until you've breached the roof.

\*When drilling don't overly apply too much pressure. Carefully drill the hole out and take your time.





Using a riv nut tool shown to right, place the provided riv nuts into the holes and lock into place with the riv nut tool.



Shown is the completed look after the nuts have been placed into the holes.



We recommend adding some sealant around the holes to provide more weather resistance from the elements as shown to the right.



Attach the provided clips onto the support brackets as shown to the right.



Once you've drilled out your roof holes around the vehicle and installed the riv nuts, place your mounting feet into position and tighten down into place with provided washers/bolts.

Once your mounting 'feet' are placed into position and tightened down, place roof rack back onto vehicle with help of a friend and align with each bracket. Use provided 5/16" bolts and washers for each mount hole location and tighten down roof rack to each bracket as shown below.



At this point, double check all of your bolts to make sure everything is tightened down and secured.

Your all finished!

If you have any further questions or comments, please email us at [info@expeditionone.biz](mailto:info@expeditionone.biz)