

INSTALLATION GUIDE

2019+ Ram 2500/3500 HD Base Rear Bumper



CONTENTS

CONTENTS

Hardware	Page 3
Bumper Removal	
Wiring harness and hardware removal	Page 4
Bumper Installation	
Rear Bumper Bracket Installation	Page 5
Rear Bumper Installation	Page 6
Sensor Plate and Wiring Attachment	Page 7

SKILL LEVEL - 4 STARS



- 1 STAR
- 2 STARS
- 3 STARS
- 4 STARS
- 5 STARS

- EASY - No tools required
- BASIC - Requires standard tools, basic mechanical knowledge and understanding
- MODERATE - Requires standard tools. Some drilling and/or cutting.
- ADVANCED - Requires speciality tools. Drilling, cutting, and/or welding
- EXPERT - Professional installation recommended.

DISCLAIMER

Expedition One is not responsible for any damages to vehicle or injury.
We always recommend knowledgeable professional assistance when installing our vehicle products.

Always follow safety precautions including the use safety gear and devices.

HARDWARE

HARDWARE

ITEM	QTY
Ram 2500/3500 HD Rear Bumper	1
Rear Mounting Brackets	2
Rear Mounting Hardware Base Bumper	
1/2"-13 X 1 1/4" Hex Cap Bolts	8
1/2"-13 Nylock Nuts	8
1/2" X 1.375" USS Washers	16
R19 Sensor Bracket Kit	
R19 Plate	1
1/4"-20 X 1" Hex Cap Bolts	2
1/4"-20 Nylock Nuts	2
1/4" X 0.625" SAE Washers	4
License Plate Light Kit	
LED Light with Wiring	2
Male Connector	4
Female Connector	4
Rear Bumper Sensor Plugs	4



BUMPER REMOVAL

1 DISCONNECT WIRING HARNESS

Disconnect the rear bumper's parking sensors and license plate light wiring harness via the drivers side connector located in the corner of the bumper.

2 REMOVE OEM HARDWARE AND BUMPER

Remove the rear bumper OEM hardware of 6 bolts (2 each side and 2 center behind the rear license plate). Pull off the rear bumper.



3 INSTALLATION OF PARKING SENSORS

Remove the OEM parking sensors bezels and disconnect the parking sensors from the wiring loom. Install the new OEM front bumper sensor kit parking sensor bezels as shown, before connecting the parking sensors. (PN 68449575AA)



BASE BUMPER INSTALL

4 INSTALLATION OF REAR BASE BUMPER BRACKETS

Mount the brackets (arrow down) using the supplied mounting hardware as shown below. In addition to the use of the OEM hardware (2 each side as circled and 2 center behind the rear license plate location).



IF VEHICLE HAS A REAR DRIVERS SIDE STEP, YOU'LL NEED TO WIDEN THE 2 LEFT HOLES TO FIT THE 1/2" BOLTS.



5 INSTALLATION OF REAR BASE BUMPER

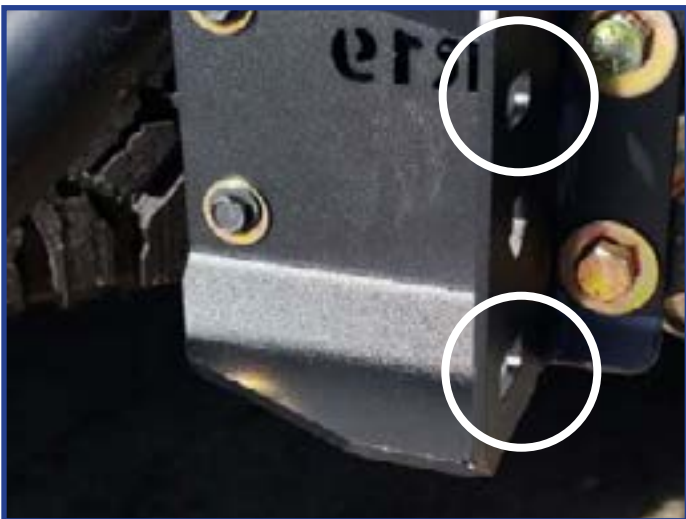
Center the bumper with the vehicle and align gaps to your preference before mounting.



6 INSTALLATION OF REMAINING REAR HARDWARE

Mount the remaining supplied bumper hardware (locations as circled) on both sides to attach the bumper

Tighten to recommended 90 ft-lbs.



7 INSTALLATION OF R19 PLATE AND SENSOR

Attach the sensor as shown to the R19 plate to the vehicle behind the rear license plate area using the provided hardware.



8 LICENSE PLATE LIGHT INSTALLATION

Remove the original license plate lights by cutting off a small section of wire. Attach one set of connectors to the original wiring loom, connecting the opposite set to the provided lights. Insert the provided license plate light into the bumper. Connecting the wiring loom and light wires via the connectors.



9 RECONNECT WIRING HARNESS

Reconnect the parking sensor and cornering light wiring harness to the vehicles electronics.