

INSTALLATION GUIDE

Ram 1500 Ultra Front Bumper



CONTENTS

CONTENTS

Hardware	Page 2
Bumper Removal	Page 3-4
Bumper Assembly	Page 5-7
Bumper Installation	Page 8

HARDWARE

ITEM	QTY
Ram 1500 Front Bumper	1
Front Mounting Plates	4
Clevis	2
2 Hole Spacer	2
2 Hole Shim	2
Front Mounting Hardware	
1/2"-13 X 1 1/2" Hex Cap Bolts	18
1/2"-13 Nylock Nuts	18
1/2" X 1.375" USS Washers	36
Winch Plate Hardware	
3/8"-16 X 1 1/4" Hex Cap Bolts	6
3/8"-16 Nylock Nuts	6
3/8" X 1.000" USS Washer	12

SKILL LEVEL - 4 STARS



1 STAR	★☆☆☆☆
2 STARS	★★☆☆☆
3 STARS	★★★☆☆
4 STARS	★★★★☆
5 STARS	★★★★★

EASY - No tools required

BASIC - Requires standard tools, basic mechanical knowledge and understanding

MODERATE - Requires standard tools. Some drilling and/or cutting.

ADVANCED - Requires speciality tools. Drilling, cutting, and/or welding

EXPERT - Professional installation recommended.

DISCLAIMER

Expedition One is not responsible for any damages to vehicle or injury.

We always recommend knowledgeable professional assistance when installing our vehicle products.

Always follow safety precautions including the use safety gear and devices.

BUMPER REMOVAL

1 REMOVING HARDWARE AND LOWER BUMPER

Remove the front bumper hardware from both lower front wheelwell locations and frame mounts. Next disconnect the front bumper's parking sensors and lighting wiring harnesses via the connector located in the corner of the bumper. Remove the lower front portion of the bumper.

2 TRIM AND BUMPER PANEL

Disconnect the plastic trim located on the under side of the upper bumper. Next Remove the bumper panel piece by disconnecting the trim tabs under the grill and headlights.



TRIM AND BUMPER PANEL CONTINUED.

Remove the remaining plastic trim by unbolting the center section and corner mounting locations.



BUMPER INSTALLATION

3 PREASSEMBLY OF THE BUMPER

Assemble the bumper by mounting the side wings to the center section to the bumper using 1/2" hardware. Mount the clevises as shown with the provided spacer placed in the top two holes. Use the provided shim piece to adjust the gap between the wings and center as needed. Reinstall OEM parking sensors.



PARKING SENSOR WIRING

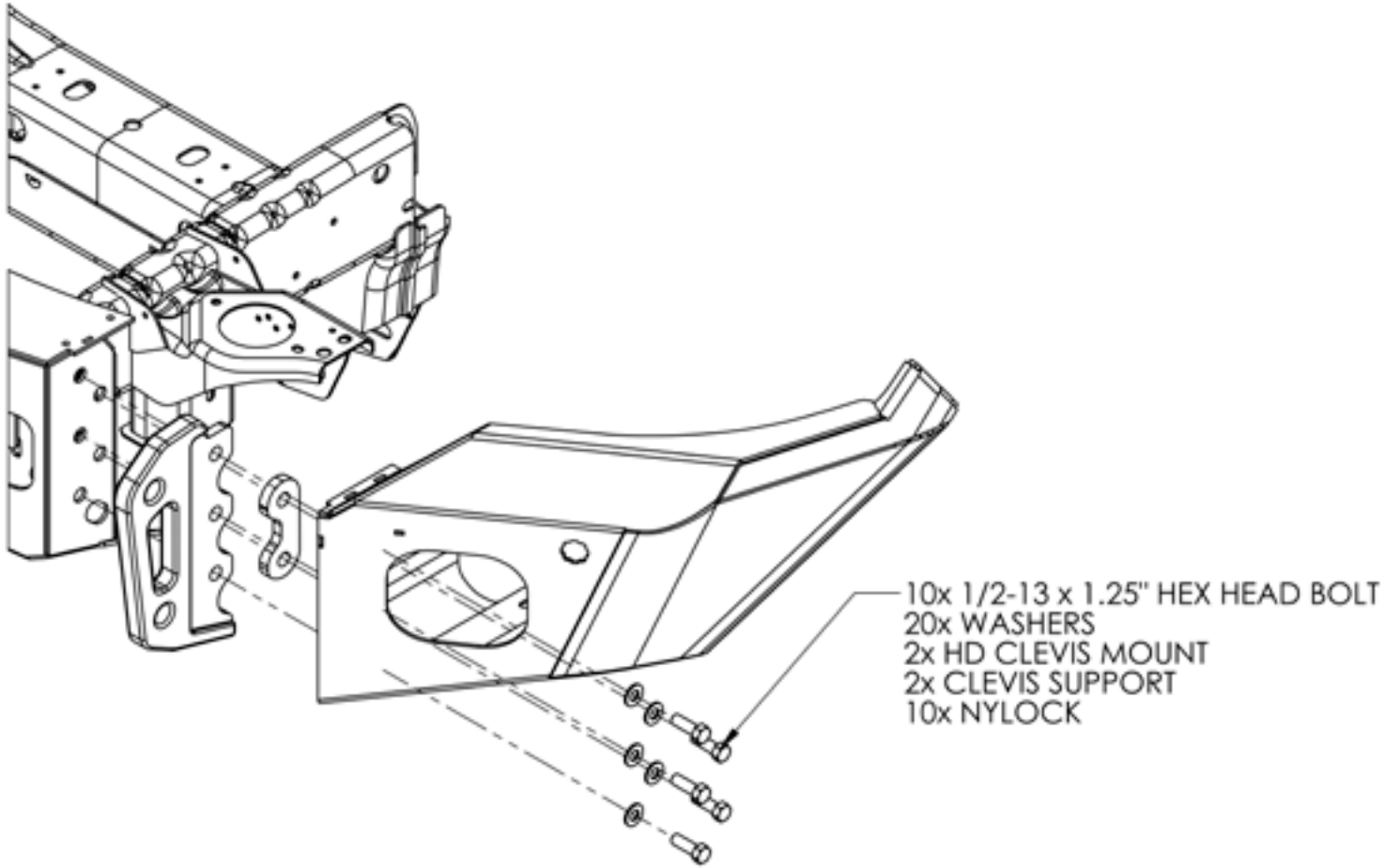
When reinstalling parking sensor wiring, thread the wiring loom through the circled location as shown

Install the all OEM parking sensor bezels before connecting the parking sensors. Bezels may need to be trimmed to fit.

The OEM wiring loom may require extension to reach the sensor locations. Wiring not provided

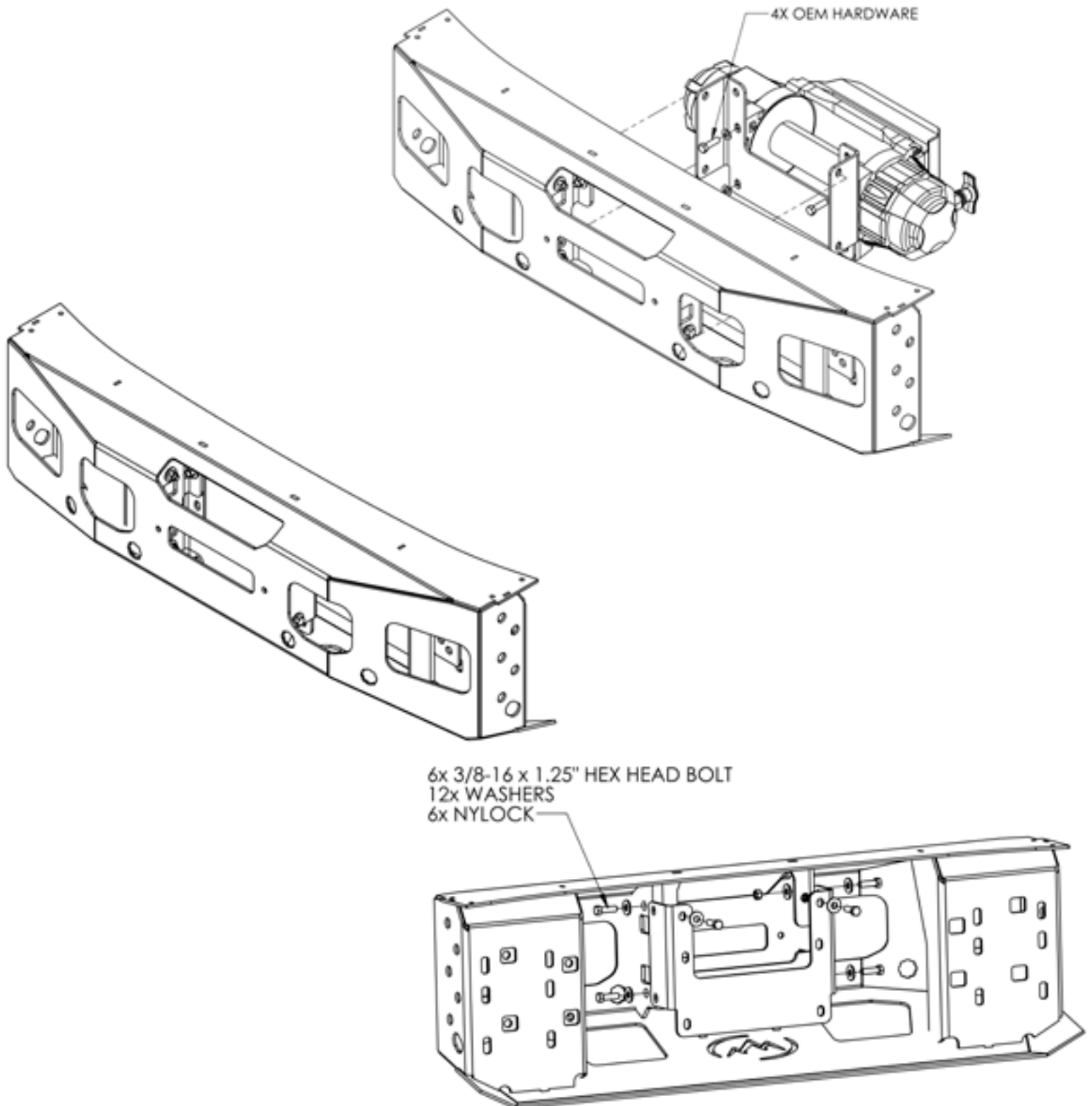


FRONT BUMPER ASSEMBLY CONTINUED



WINCH PLATE ASSEMBLY

Mount the provided winch plate using OEM hardware to the winch before installing in the bumper using the 3/8" hardware.



4 FRONT BUMPER INSTALLATION

Mount the front bumper as shown using the mounting plates and hardware provided to both sides of the vehicle. Align and level the bumper allowing for even gaps between body panels. Leave all hardware loose and tighten once the bumper is in the desired location.

