

INSTALLATION GUIDE

Jeep Wrangler JK/JL Core Series Front Bumper



CONTENTS

Hardware	Page 3
OEM Bumper Removal	
Bumper Removal	Page 4
Frame Modification	Page 5
Bumper Installation	
Bracket Attachment	Page 6 -7
Bumper Installation	Page 8-9
Bumper Mounting	Page 10-11

SKILL LEVEL - 3 STARS



- 1 STAR
- 2 STARS
- 3 STARS
- 4 STARS
- 5 STARS

- EASY - No tools required
- BASIC - Requires standard tools, basic mechanical knowledge and understanding
- MODERATE - Requires standard tools. Some drilling and/or cutting.
- ADVANCED - Requires speciality tools. Drilling, cutting, and/or welding
- EXPERT - Professional installation recommended.

DISCLAIMER

Expedition One is not responsible for any damages to vehicle or injury.
We always recommend professional assistance when installing our vehicle products.

Always follow safety precautions including the use safety gear and devices.

HARDWARE

HARDWARE

ITEM	QTY
A - Core Series Hardware Kit	
8-32 X 3/4" Phillips Head Bolt	8
8-32 Nut	8
5/16"-18 X 1" Hex Cap Bolts	4
5/16"-18 Nylock Nut	4
5/16" X 0.688 SAE Washer	8
3/8"-16 X 1" Button Head Bolt	6
3/8"-16 Nyloc Nut	6
3/8" X 1.000 USS Washer	6
1/2"-13 X 1 1/4" Hex Cap Bolt	16
1/2"-13 Nyloc Nut	4
1/2" X 1.375" USS Washer	20
Dog Bone Nut Retainer	4
Flat Nut Retainer	2
90 Bend Nut Retainer	2
B - Bumper Hardware	
Winch Plate Centered	1
Winch Plate Off Set	1
C - JK Front Bumper Brackets	2
D - JL Front Bumper Brackets	2
E - Light Port Brackets Types	2
Order Dependent	



OEM BUMPER REMOVAL

1 PRE-INSTALLATION PREPARATIONS

If you are installing a winch you must install the fairlead before installing the winch. If you are installing auxiliary lights for underneath the hoop, we recommend that you install them before you install the winch. The fairlead holes in the bumper may be too small for some fairlead bolts. We recommend swapping out the bolts for a grade 8, 3/8" bolt, or you may choose to drill the holes out for the bigger size if desired.

2 OEM FRONT BUMPER REMOVAL

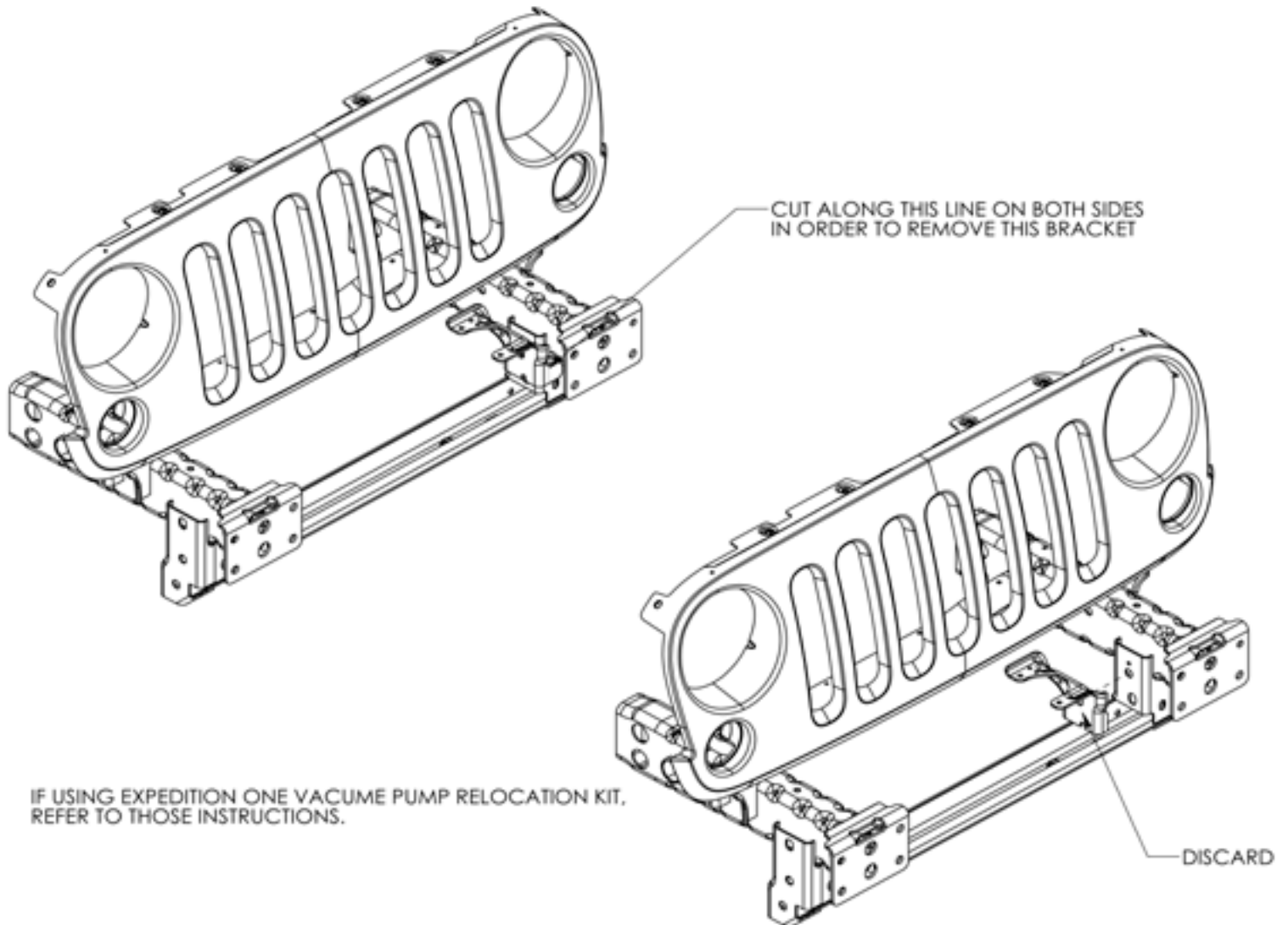
First remove the plastic air dam that sits below the stock bumper. This will allow easy access to the bumper bolts. If your vehicle is equipped with the factory fogs, undo the wiring plugs on the back of each light. After that, all you need to do is remove the 8 bolts, 2 on the inside and 2 on the outside of each frame rail respectively. Remove the bumper.

You will also want to remove the plastic trim piece that sits under the bumper and grill. It is held on with plastic retaining screws. You have 2 options: 1) Carefully and slowly, with little downward pressure, undo the screws and back them out. If that doesn't work go with the next option, which is usually faster. 2) Get a good grip on the trim piece and yank it off. You will also want to unclip the plastic retainer pieces on the frame that hold the stock light wiring harness on, if your vehicle is so equipped. You should be ready now to install your bumper.

2012 RELOCATION BRACKET CAN NOW BE USED TO MOVE THE VACUUM PUMP IF NEEDED.

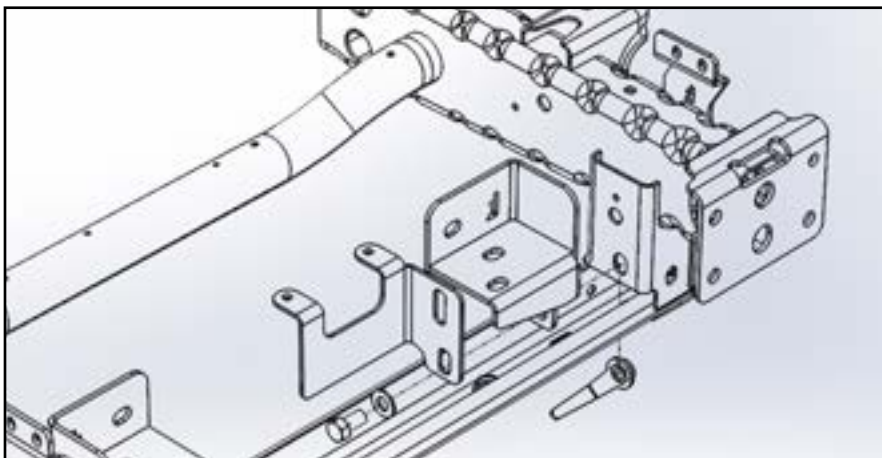
3 FRAME MODIFICATION (JK ONLY)

Remove the bracket below as shown to install the bumper



2012+ JK VACUUM PUMP BRACKET

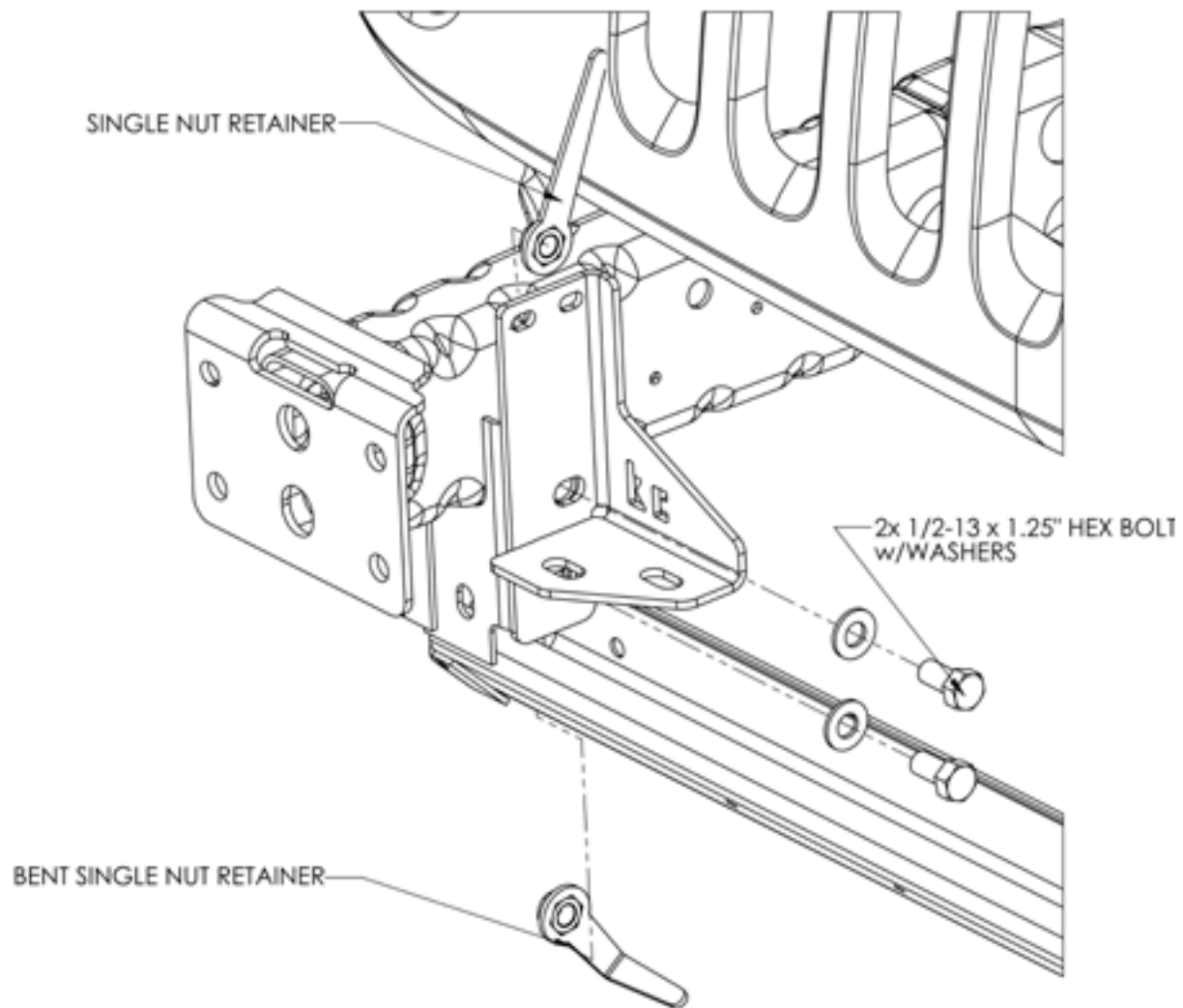
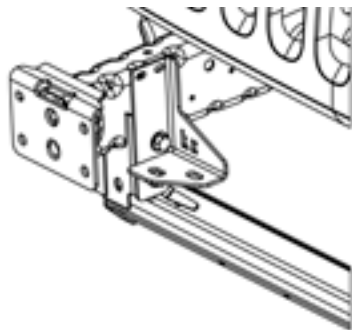
See 2012+ JK Vacuum Pump Instructions for more details.



BUMPER INSTALLATION

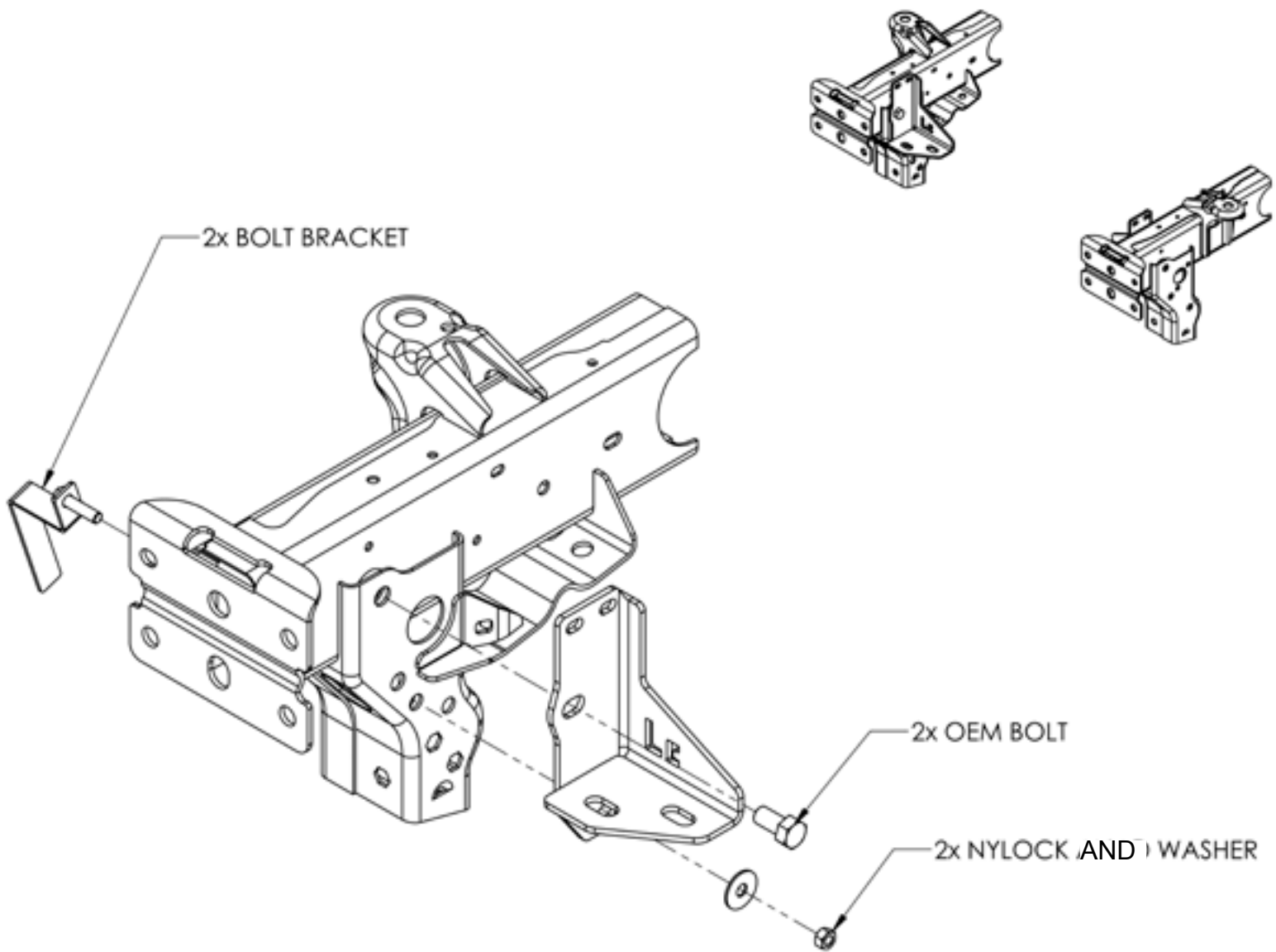
4 BRACKET INSTALLATION (JK SHOWN)

Mount both front brackets as shown using the provided hardware



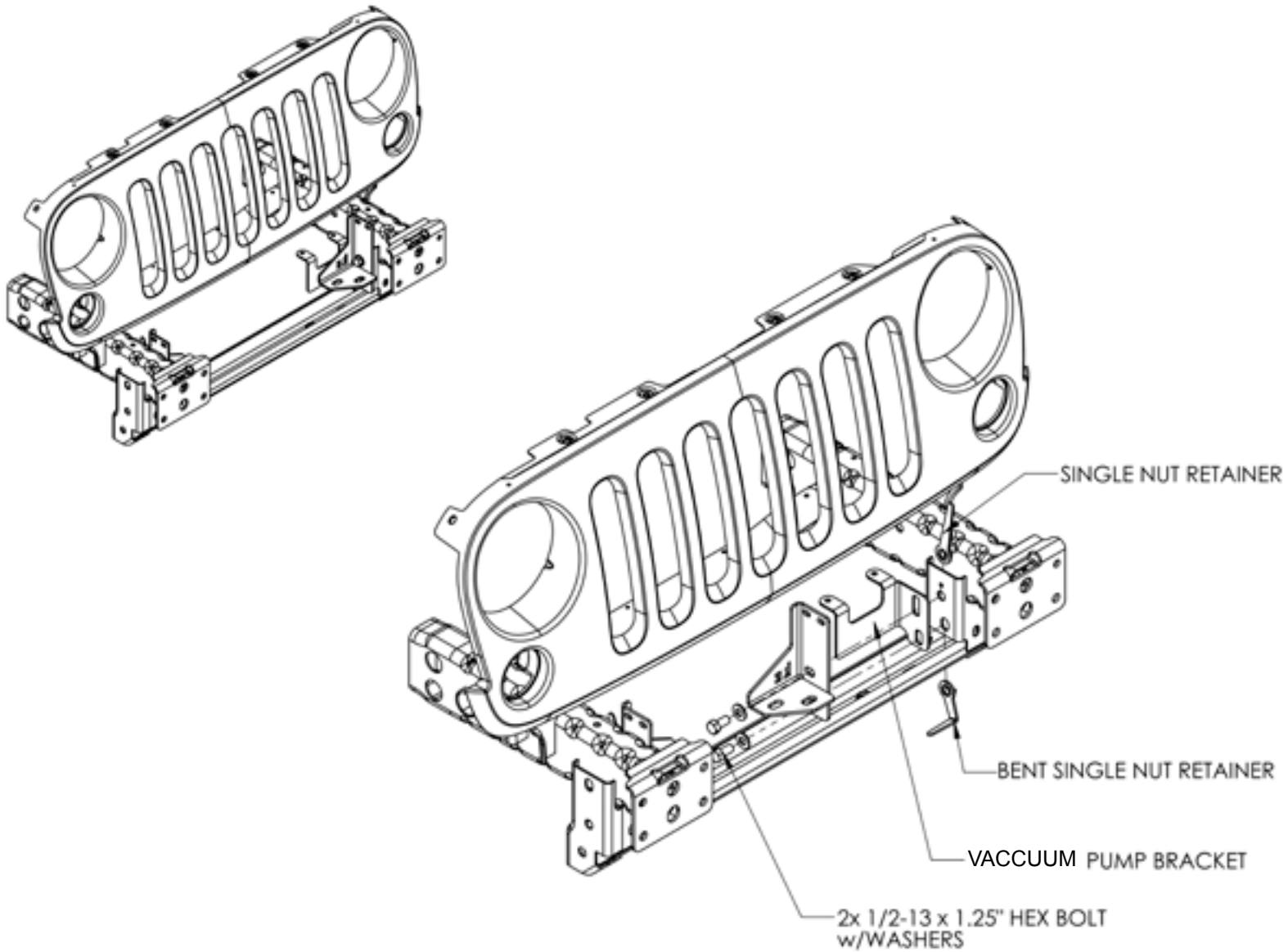
BRACKET INSTALLATION (JL SHOWN)

Mount both front brackets as shown using the provided hardware



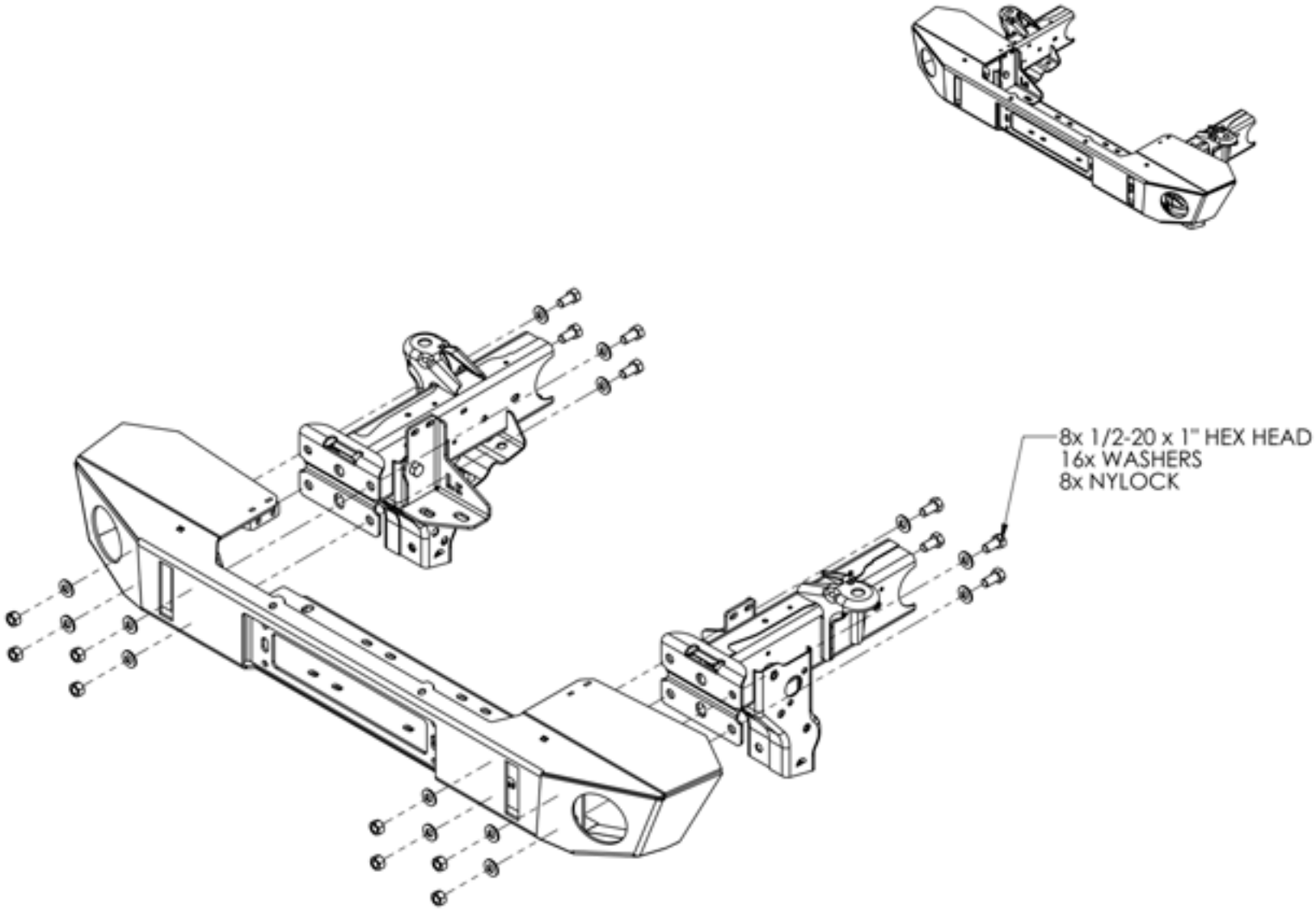
5 BUMPER INSTALLATION (JK SHOWN)

Attach the provided light ports and mount the bumper as shown. Leave hardware loose for adjustment.



BUMPER INSTALLATION (JL SHOWN)

Attach the provided light ports and mount the bumper as shown. Leave hardware loose for adjustment.



6 BUMPER MOUNTING (JK SHOWN)

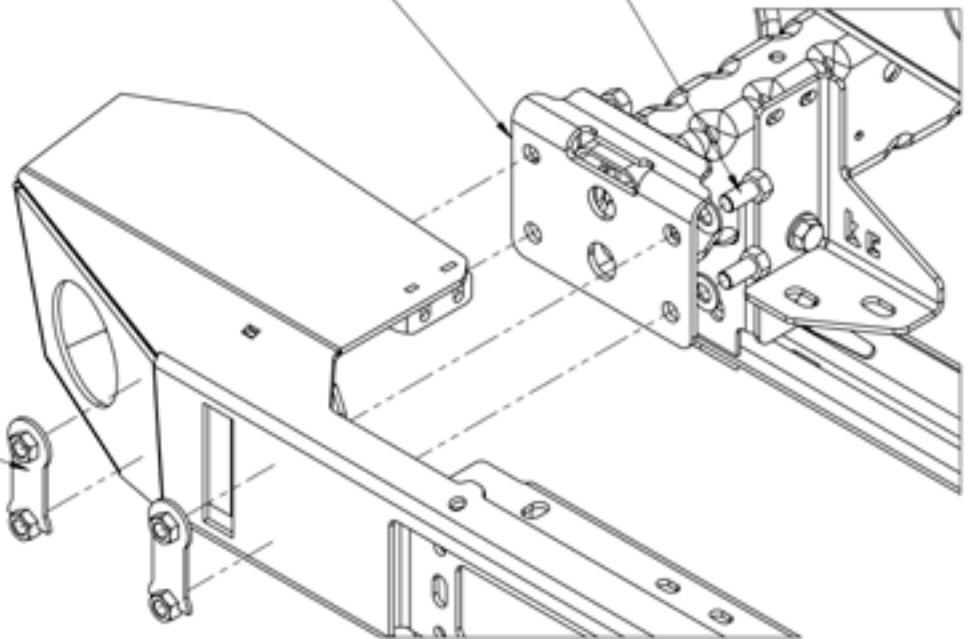
Attach the bumper using the hardware below. Check to make sure the bumper is level and aligned so that gaps are even. Tighten all hardware.



LIGHTPORTS ARE BOLTED ON THE BACK SIDE OF THE FLANGE

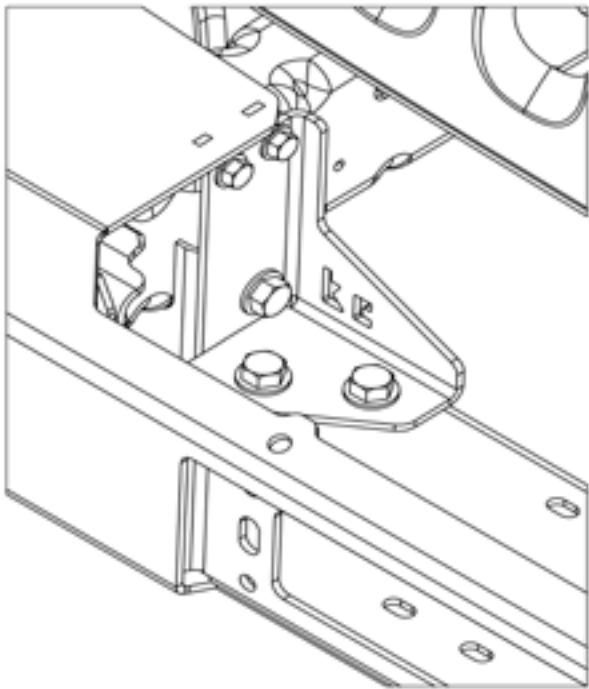
8X 1/2-13 x 1.25" HEX BOLT
w/WASHERS

2x SMALL DOGBONE

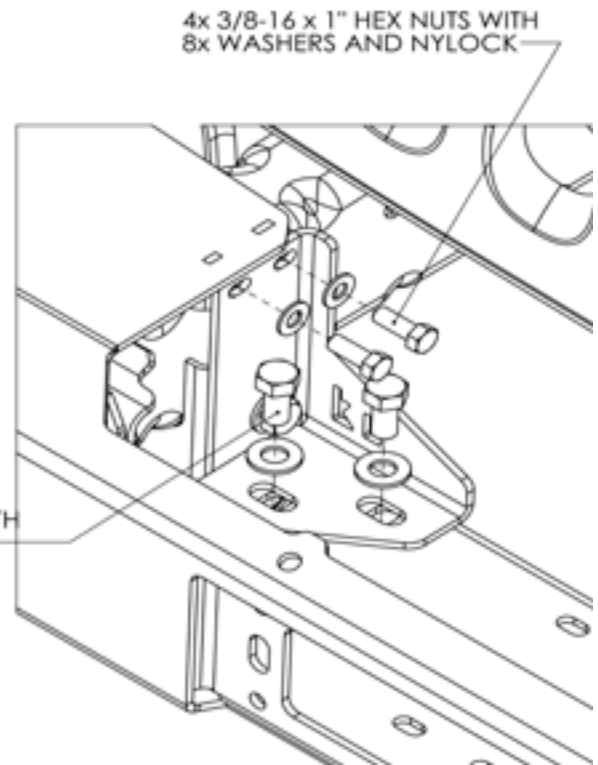


BUMPER MOUNTING CONTINUED

Finish attaching the bumper using the hardware shown below



4x 1/2-13 x 1.25" HEX NUTS WITH
8x WASHERS AND NYLOCK



BUMPER MOUNTING (JL SHOWN)

Attach the bumper using the hardware below. Check to make sure the bumper is level and aligned so that gaps are even. Tighten all hardware.

