

INSTALLATION GUIDE

Jeep Wrangler JK/JL Trail Series Front Bumper



CONTENTS

Hardware	Page 3
OEM Bumper Removal	
Bumper Removal	Page 4
Frame Modification	Page 5
Bumper Installation	
Bracket Attachment	Page 6 -7
Bumper Installation	Page 8-9
Bumper Mounting	Page 10-11

SKILL LEVEL - 3 STARS



- 1 STAR
- 2 STARS
- 3 STARS
- 4 STARS
- 5 STARS

- EASY - No tools required
- BASIC - Requires standard tools, basic mechanical knowledge and understanding
- MODERATE - Requires standard tools. Some drilling and/or cutting.
- ADVANCED - Requires speciality tools. Drilling, cutting, and/or welding
- EXPERT - Professional installation recommended.

DISCLAIMER

Expedition One is not responsible for any damages to vehicle or injury.
We always recommend professional assistance when installing our vehicle products.

Always follow safety precautions including the use safety gear and devices.

HARDWARE

HARDWARE

ITEM QTY

A- Trail Series Hardware Kit

JK/JL Trail Series

5/16"-18 X 1" Hex Cap Bolt	4
5/16"-18 Nylock Nut	4
5/16" X 0.688 SAE Washer	8
1/2"-13 X 1" Hex Cap Bolt	8
1/2"-13 X 1 1/4" Hex Cap Bolt	6
1/2"-13 Nyloc Nut	6
1/2" X 1.375" USS Washer	12
Dog Bone Nut Retainer	4
Bent Bolt Retainer	2



JK Trail Series Classic (Not Shown)

1/2"-13 X 1" Hex Cap Bolt	10
1/2" X 1.062" SAE Washer	12
Dog Bone Nut Retainer	4
Flat Nut Retainer	2



B - JK Bumper Brackets

Front Brackets L&R	2
Front Plate Brackets	2

C - JL Bumper Brackets

Front Brackets L&R	2
Front Plate Brackets	2



D - Light Port Brackets (JL Full Width Only)

Trail Series Light Brackets	2
8-32 X 3/4" Phillips Head Bolt	8
8-32 Nut	8
1/4"-20 X 3/4"	4
1/4"-20 Nyloc Nut	4
1/4" X 0.625 SAE Washer	8

OEM BUMPER REMOVAL

1 PRE-INSTALLATION PREPARATIONS

If you are installing a winch you must install the fairlead before installing the winch. If you are installing auxiliary lights for underneath the hoop, we recommend that you install them before you install the winch. The fairlead holes in the bumper may be too small for some fairlead bolts. We recommend swapping out the bolts for a grade 8, 3/8" bolt, or you may choose to drill the holes out for the bigger size if desired.

2 OEM FRONT BUMPER REMOVAL

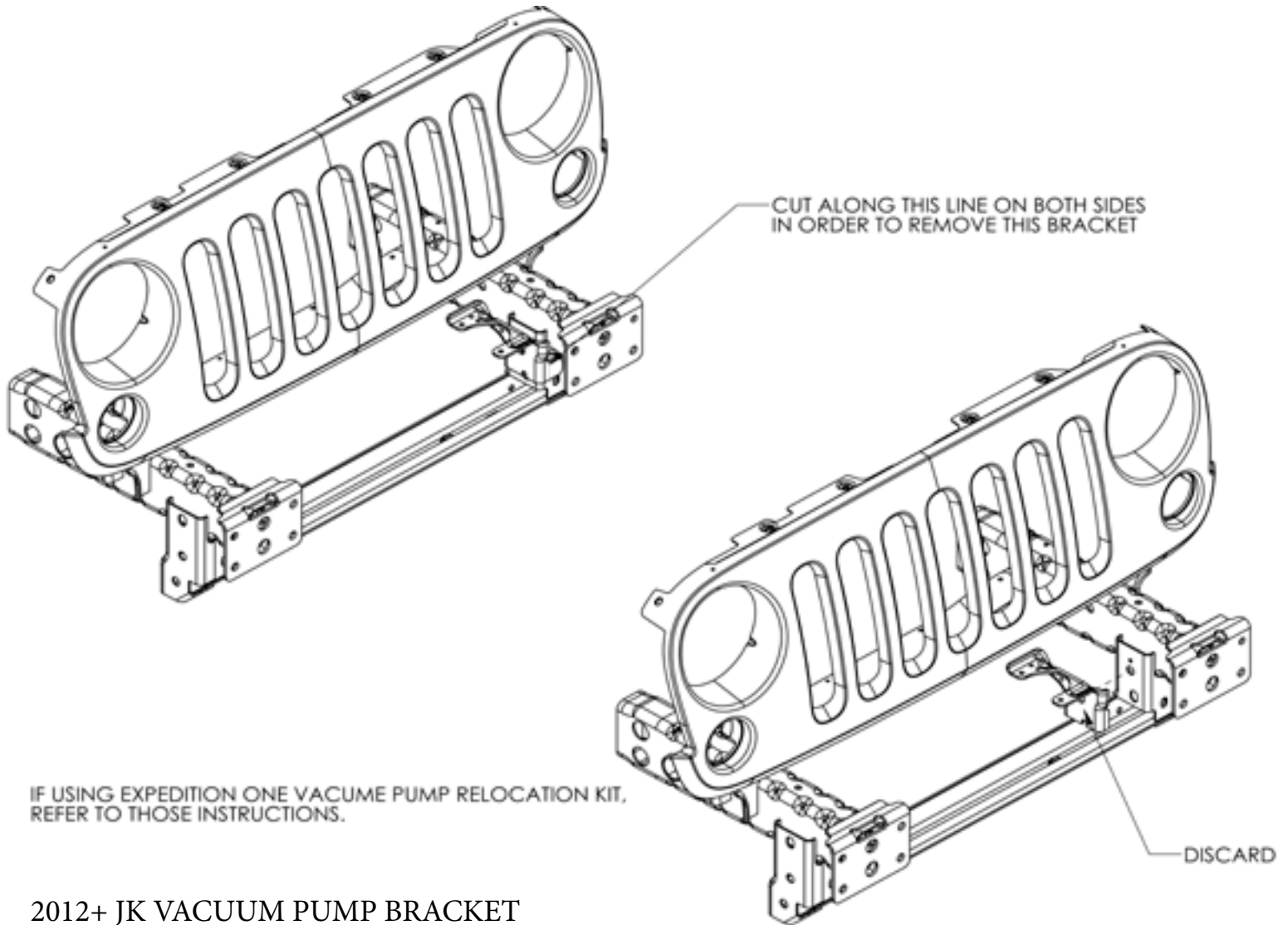
First remove the plastic air dam that sits below the stock bumper. This will allow easy access to the bumper bolts. If your vehicle is equipped with the factory fogs, undo the wiring plugs on the back of each light. After that, all you need to do is remove the 8 bolts, 2 on the inside and 2 on the outside of each frame rail respectively. Remove the bumper.

You will also want to remove the plastic trim piece that sits under the bumper and grill. It is held on with plastic retaining screws. You have 2 options: 1) Carefully and slowly, with little downward pressure, undo the screws and back them out. If that doesn't work go with the next option, which is usually faster. 2) Get a good grip on the trim piece and yank it off. You will also want to unclip the plastic retainer pieces on the frame that hold the stock light wiring harness on, if your vehicle is so equipped. You should be ready now to install your bumper.

2012 RELOCATION BRACKET CAN NOW BE USED TO MOVE THE VACUUM PUMP IF NEEDED.

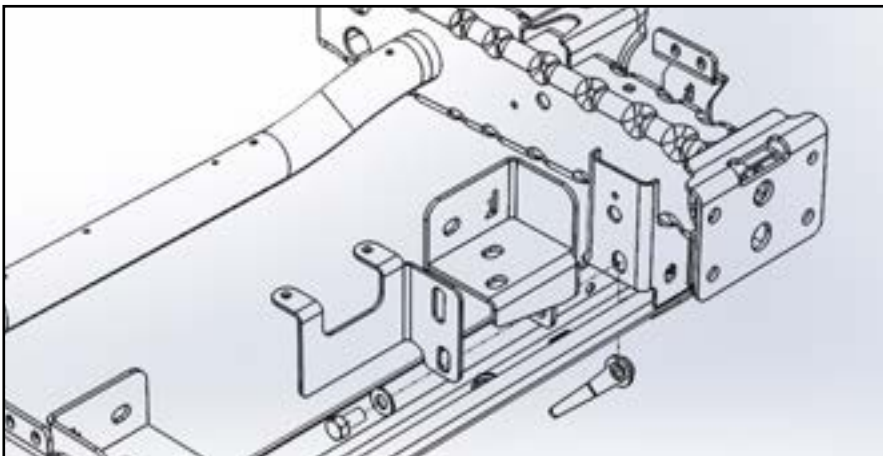
3 FRAME MODIFICATION (JK ONLY)

Remove the bracket below as shown to install the bumper



2012+ JK VACUUM PUMP BRACKET

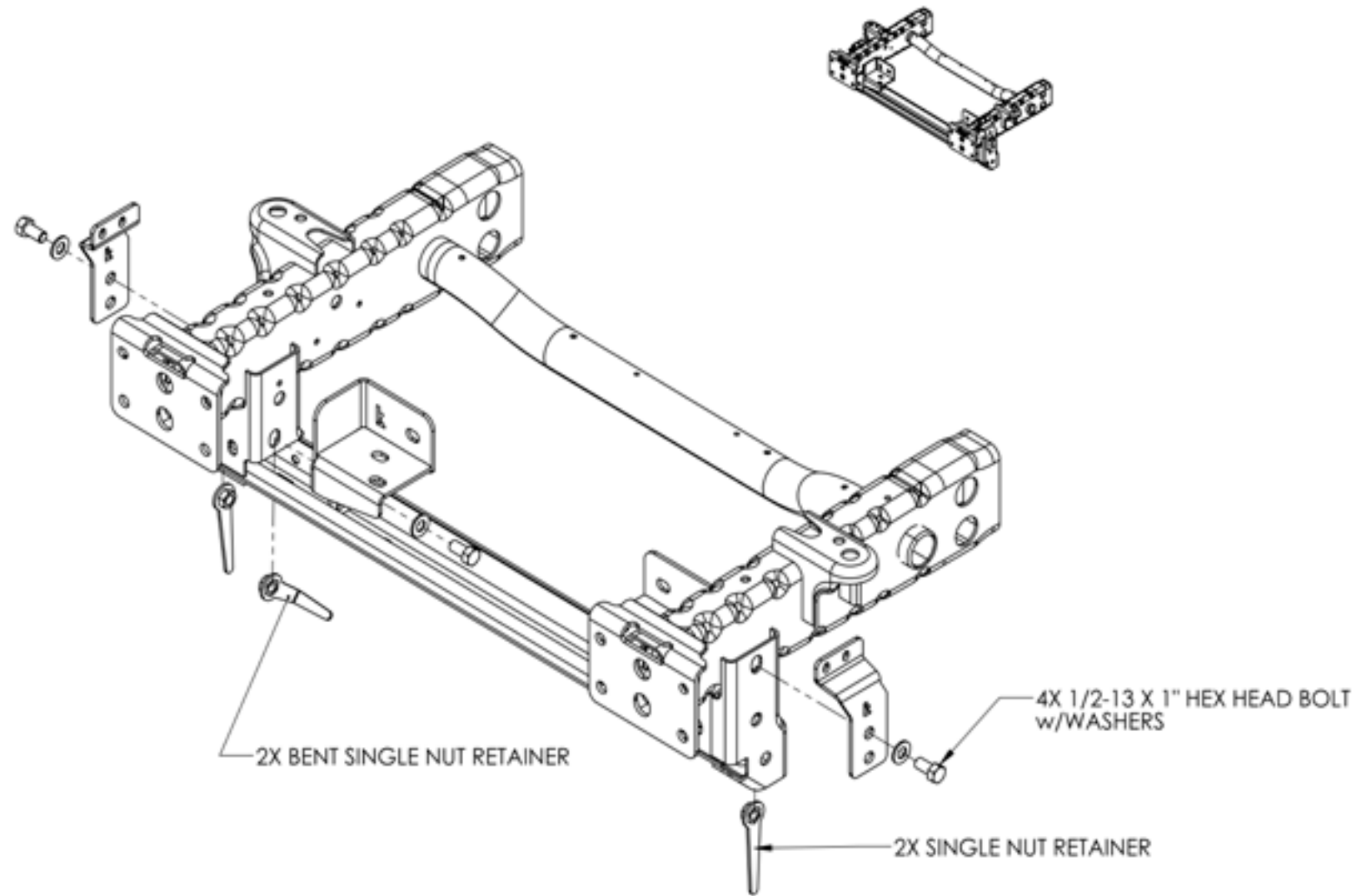
See 2012+ JK Vacuum Pump Instructions for more details.



BUMPER INSTALLATION

4 BRACKET INSTALLATION (JK SHOWN)

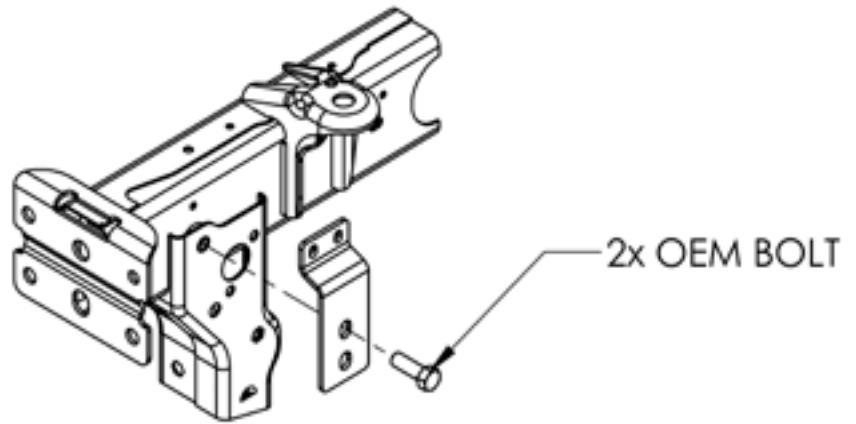
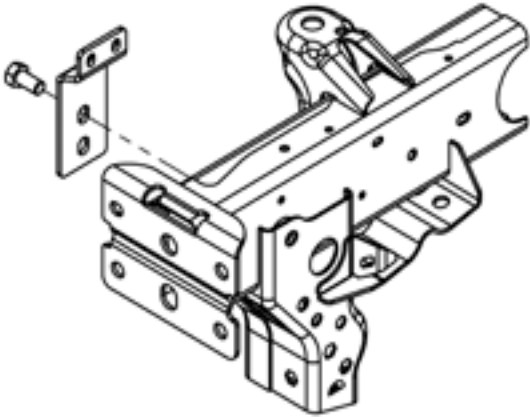
Mount all front brackets as shown using the provided hardware



BUMPER INSTALLATION

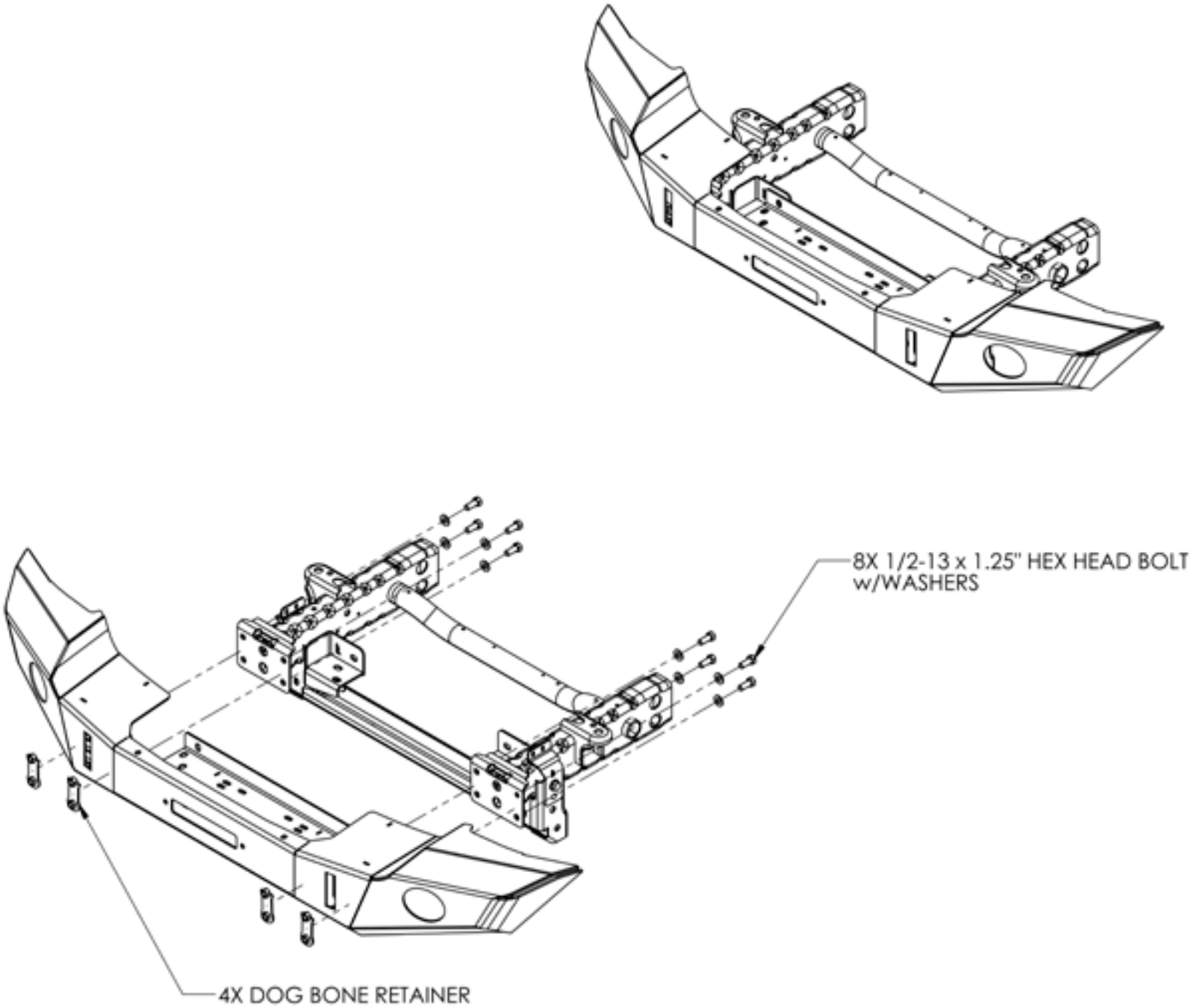
BRACKET INSTALLATION (JL SHOWN)

Mount both front plate brackets as shown using the provided hardware



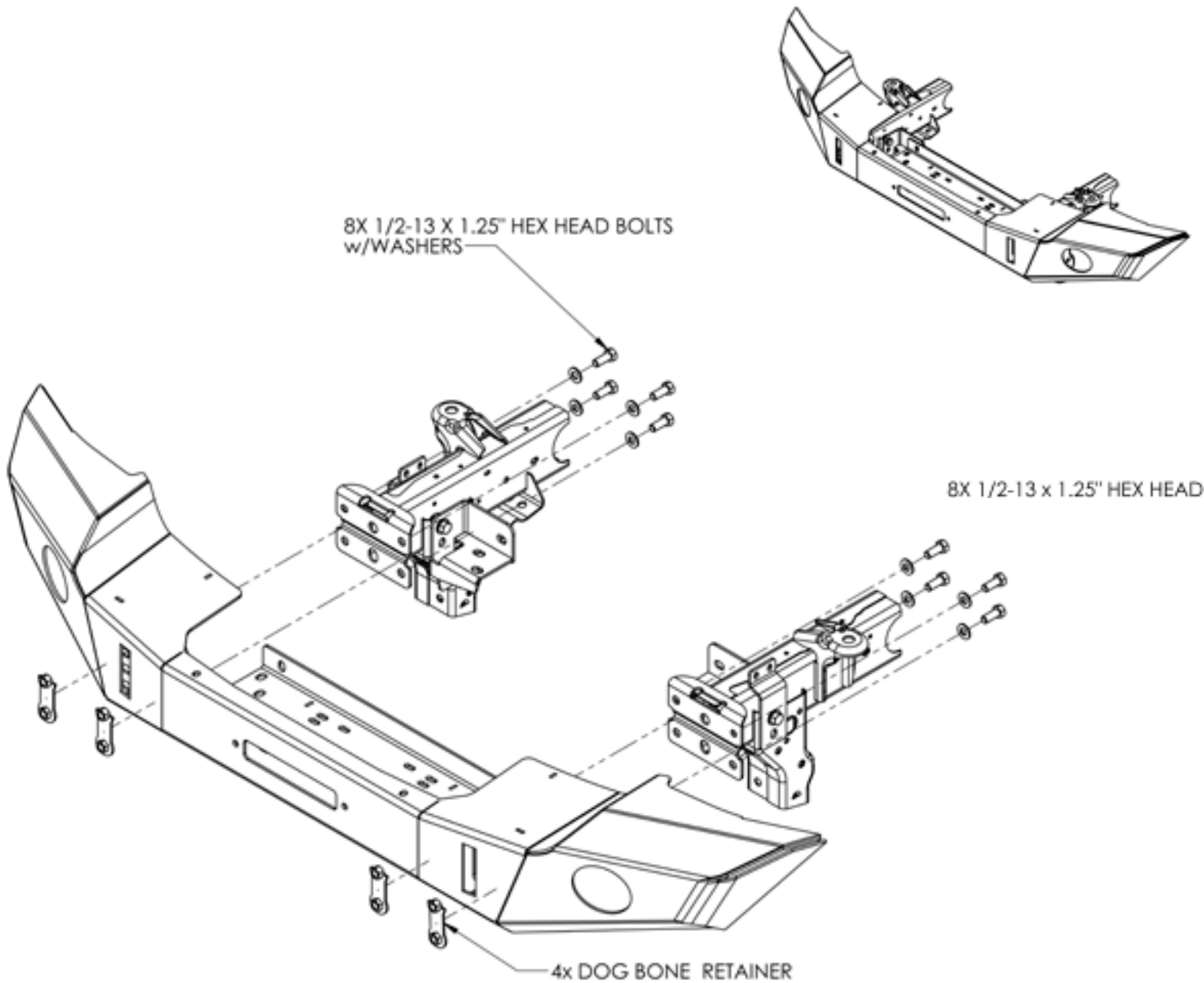
5 BUMPER INSTALLATION (JK SHOWN)

Attach the bumper as shown using the provided hardware. Leave hardware loose for adjustment.



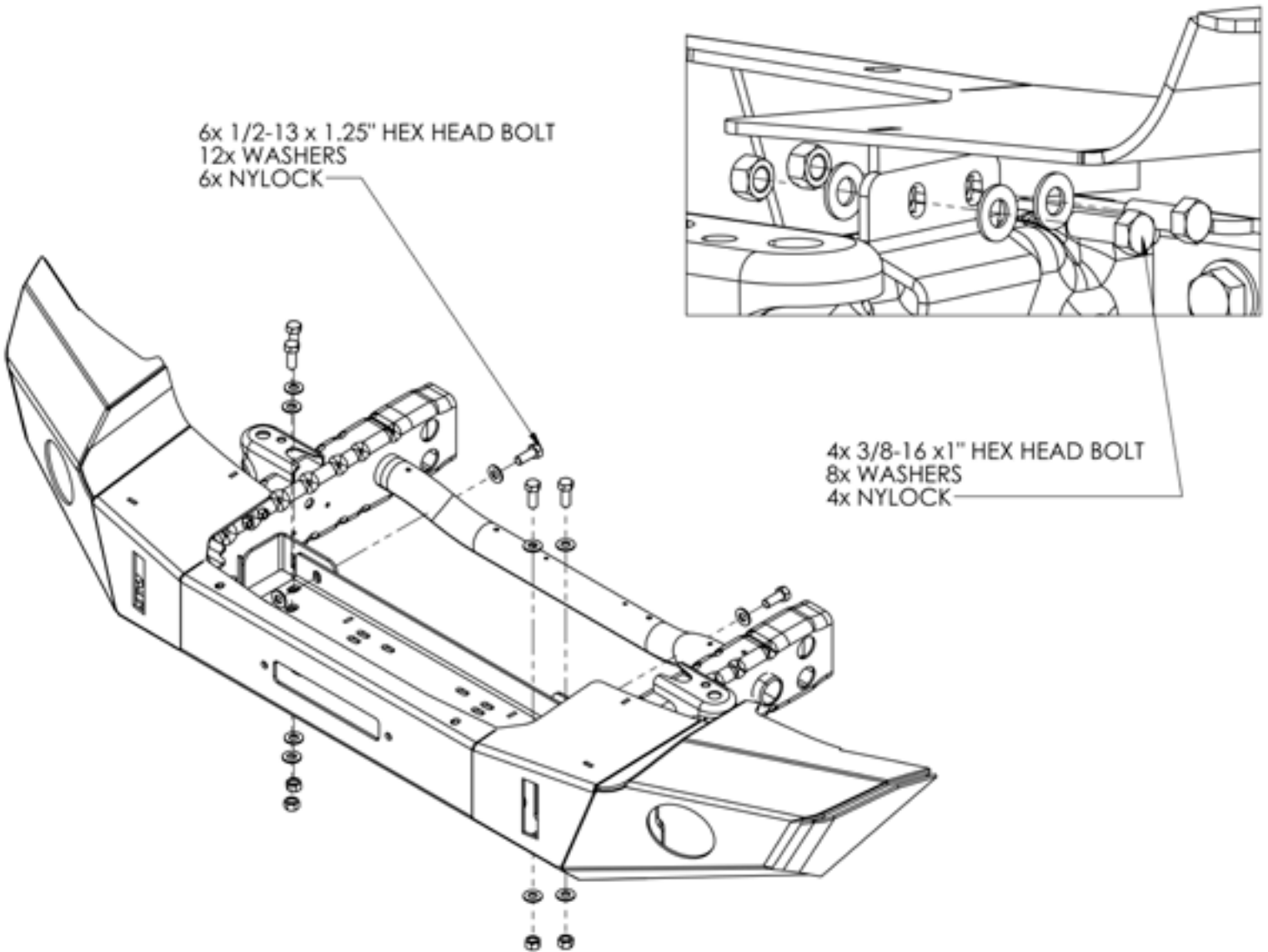
BUMPER INSTALLATION (JL SHOWN)

Attach the bumper as shown using the provided hardware. Leave hardware loose for adjustment.



6 BUMPER MOUNTING (JK SHOWN)

Attach the bumper using the hardware below. Check to make sure the bumper is level and aligned so that gaps are even. Tighten all hardware



BUMPER MOUNTING (JL SHOWN)

Mount the inside frame brackets to both sides and attach with the bumper using the hardware below. Check to make sure the bumper is level and aligned so that gaps are even. Tighten all hardware

