

# INSTALLATION GUIDE

2019+ Ram 2500/3500 HD Front Bumper



# CONTENTS

## CONTENTS

Hardware	Page 3
Bumper Removal	
Wiring harness and hardware removal	Page 4
Hardware and bumper removal	Page 5
Bumper Preparation	
Cornering Light Installation	Page 6
Parking Sensor Installation	Page 7 - 9
Wiring Harness and Clevis Installation	Page 10
Winch Installation	Page 11 - 13
Frame Mount Modification	Page 14
Bumper Installation	
Front Bumper Bracket Installation	Page 15
Front Bumper Installation	Page 16

## SKILL LEVEL - 4 STARS



1 STAR	★☆☆☆☆
2 STARS	★★☆☆☆
3 STARS	★★★☆☆
4 STARS	★★★★☆
5 STARS	★★★★★

EASY - No tools required
BASIC - Requires standard tools, basic mechanical knowledge and understanding
MODERATE - Requires standard tools. Some drilling and/or cutting.
ADVANCED - Requires speciality tools. Drilling, cutting, and/or welding
EXPERT - Professional installation recommended.

## DISCLAIMER

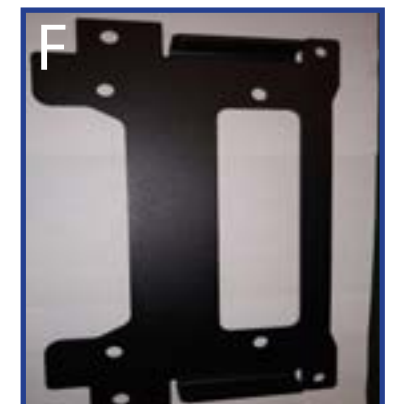
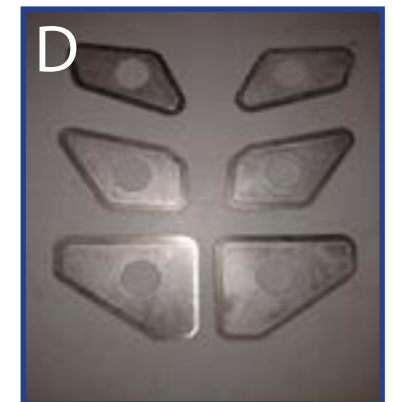
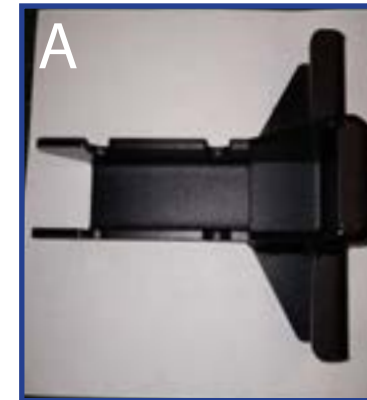
Expedition One is not responsible for any damages to vehicle or injury.  
We always recommend professional assistance when installing our vehicle products.

Always follow safety precautions including the use safety gear and devices.

# HARDWARE

## HARDWARE

ITEM	QTY
Ram 2500/3500 HD Front Bumper	1
<a href="#">A</a> Front Mounting Brackets	2
Front Mounting Hardware	
1/2"-13 X 1 1/2" Hex Cap Bolts	16
1/2"-13 Nylock Nuts	16
1/2" X 1.375" USS Washers	32
Square Spacers	16
<a href="#">B</a> Front Bumper Clevises	2
Front Bumper Clevis Hardware	
5/8"-11 X 2" Hex Cap Bolts	6
5/8"-11 Nylock Nuts	6
5/8" X 1.750" USS Washers	12
Cornering Light Hardware	
1/4"-20 X 1" Hex Cap Bolts	8
1/4"-20 Nylock Nuts	8
1/4" X 0.625" SAE Washers	16
<a href="#">C</a> Front Bumper Sensor Brackets	6
<a href="#">D</a> Front Bumper Sensor Plates	6
Front Bumper Sensor Hardware	
1/4"-20 X 3/4" Hex Cap Bolts	6
1/4"-20 Nylock Nuts	6
1/4" X 0.625" SAE Washers	12
<a href="#">E</a> Frame Mount Template R19-FB	1
MODEL DEPENDENT ITEMS	
<a href="#">F</a> Non PowerWagon Front Bumper Winch Plate	1
Winch Plate Hardware	
3/8"-16 X 1" Hex Cap Bolts	4
3/8"-16 Nylock Nuts	4
3/8" X 1.000 USS Washer	8
<a href="#">G</a> Power Wagon Winch Button Bracket	1
Winch Button Hardware	
3/8"-16 X Hex Cap Screw	2
3/8"-16 Nylock Nuts	2
3/8" X 1.000 USS Washer	4
<a href="#">H</a> Plug Adaptor	1





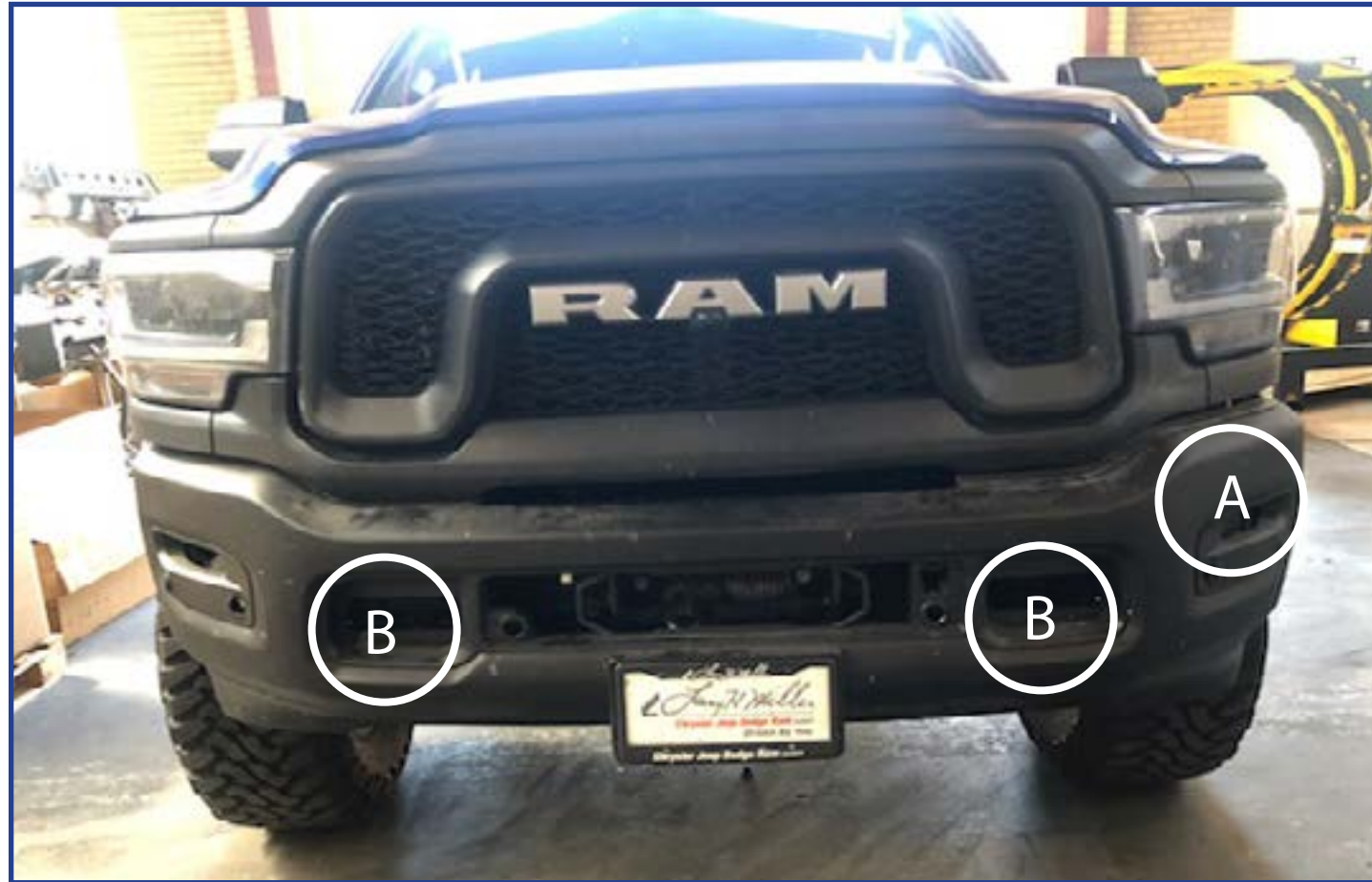
# BUMPER REMOVAL

## 1 DISCONNECT WIRING HARNESS

Disconnect the front bumper's parking sensors and cornering light wiring harness via the drivers side connector located in the corner of the bumper (A).

## 2 REMOVE OEM BUMPER HARDWARE

Remove the front bumper OEM hardware of 4 bolts and alignment pin on both sides (B).



## REMOVE OEM BUMPER HARDWARE CONTINUED



## 3 REMOVE THE BUMPER

Remove the bumper for the vehicle. Disconnect the OEM wiring harness and save for installation into the new bumper. Remove both front cornering lights and 6 parking bezels and sensors.





# BUMPER PREPERATION

## 4 CORNERING LIGHT INSTALLATION

Trim the tabs on both cornering lights by removing the edges to create a flat mounting surface.



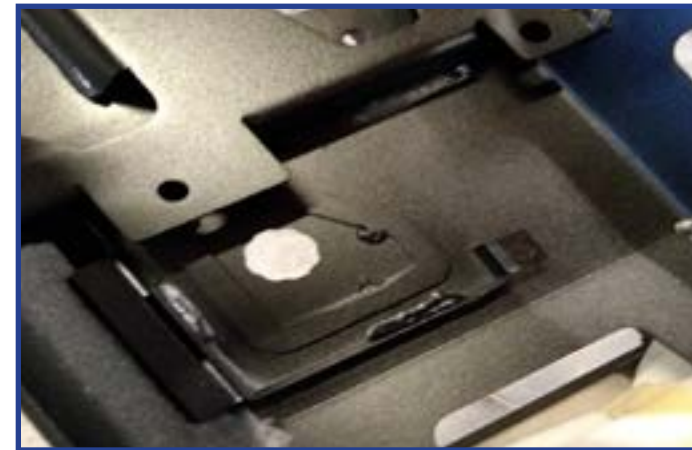
## 5 MOUNTING THE CORNERING LIGHTS

Mount the cornering lights as shown using the supplied cornering light hardware (see page 3)



## 6 PARKING SENSOR INSTALLATION

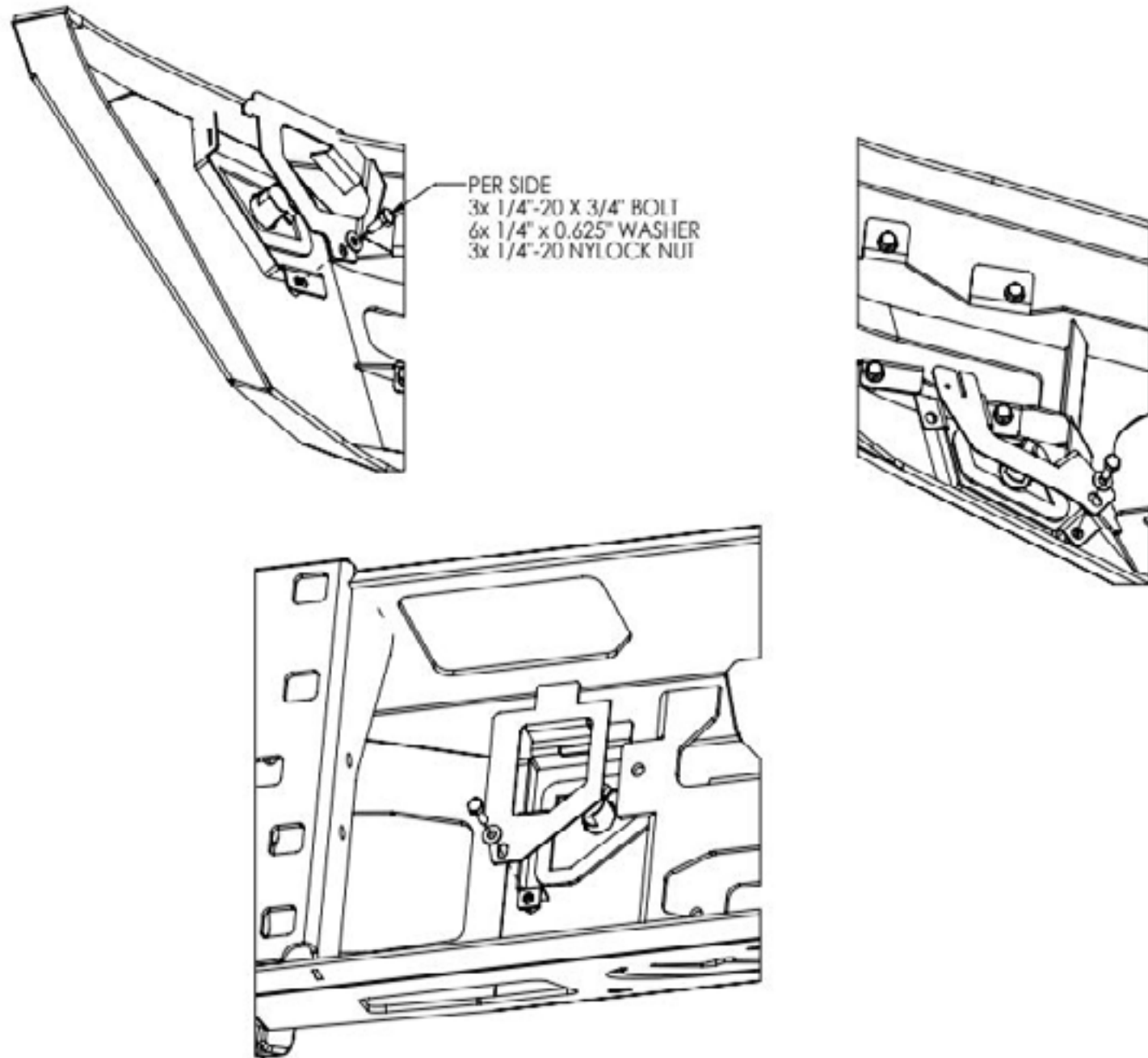
Place the parking sensor plate into the matching slot. Next install the parking sensor bracket as shown, making sure to insert the tabs (as circled).





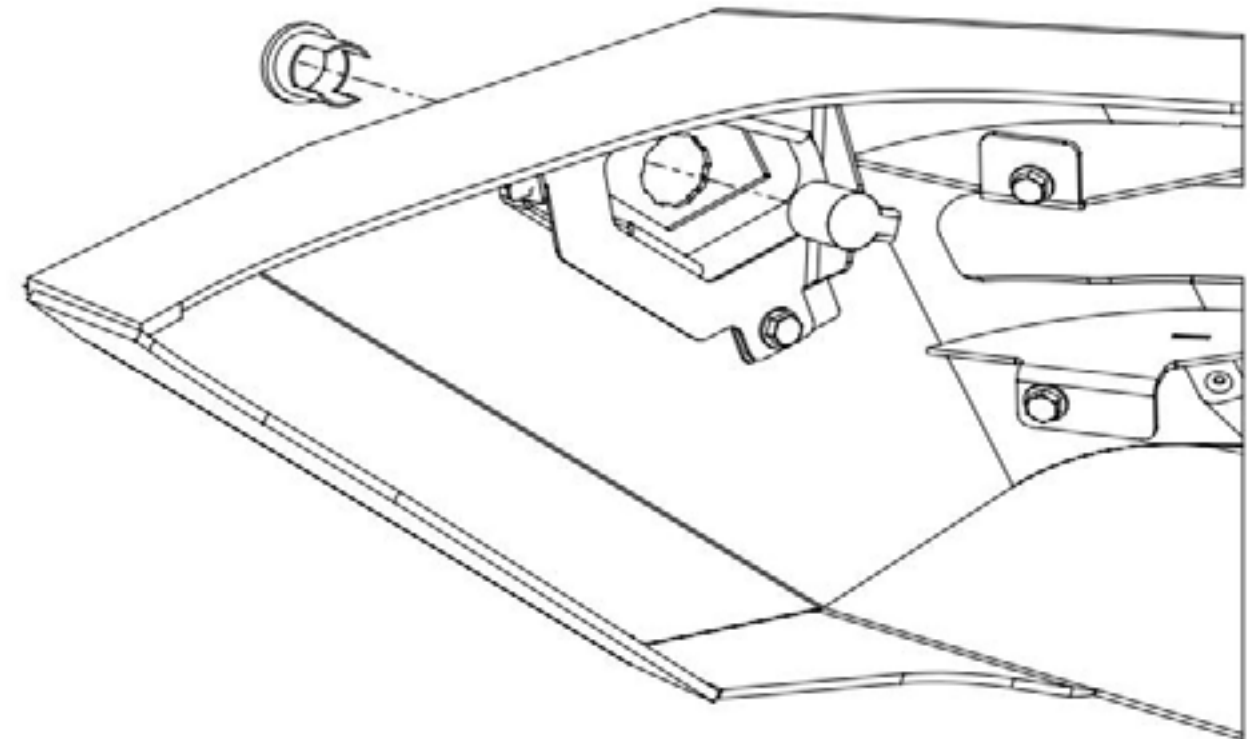
## 7 PARKING SENSOR INSTALLATION

Mount the parking sensor brackets using the supplied parking sensor hardware as shown below



## 8 PARKING SENSOR INSTALLATION

Replace the all OEM parking sensor bezels as shown, before connecting the parking sensors

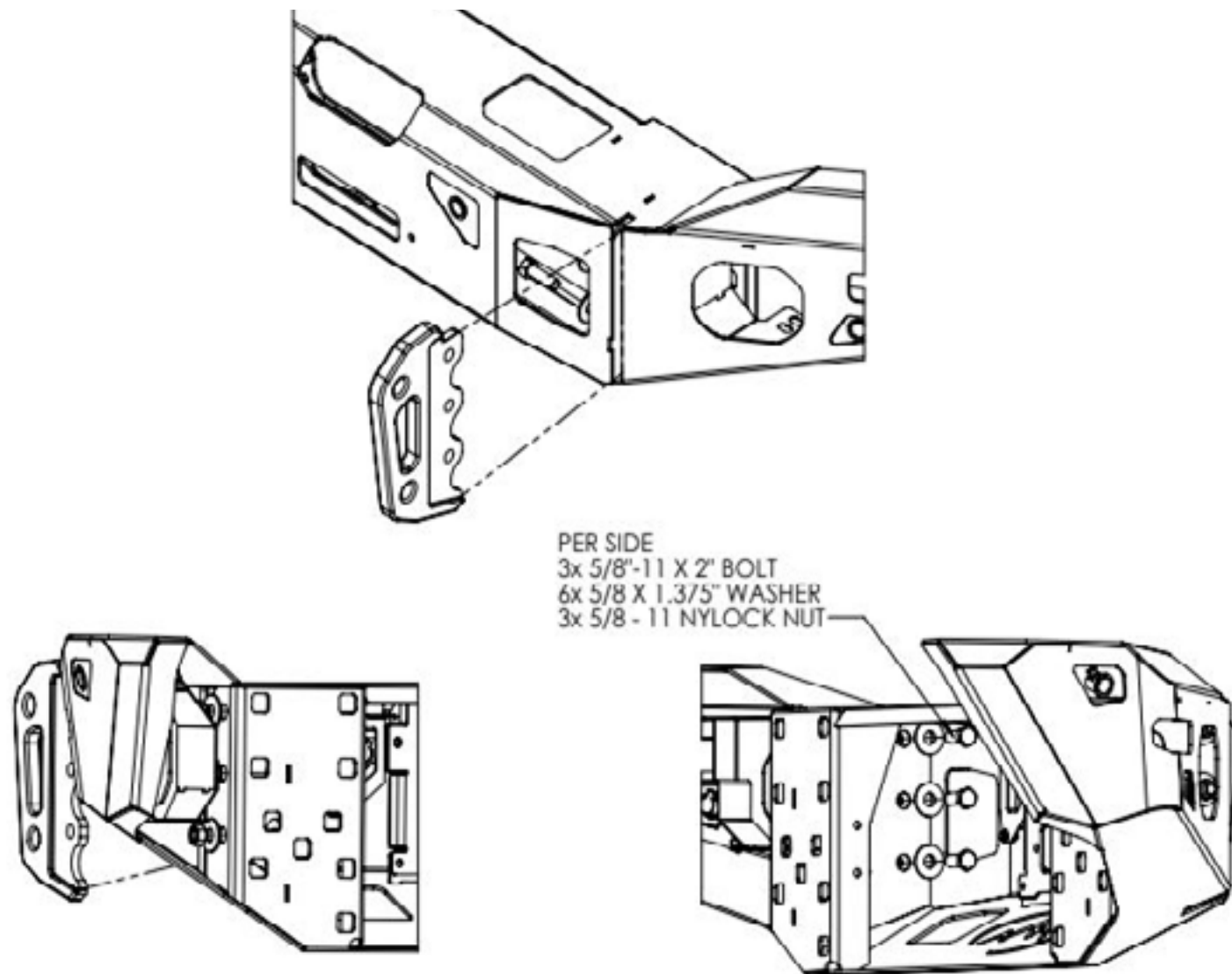


## 9 WIRING HARNESS INSTALLATION

Place the OEM wiring harness into the bumper, threading the wiring through so that connectors match their respective positions. Make sure the wiring harness connector is located on the driver's side of the vehicle. Reattach all 6 parking sensors and both cornering light connectors. Avoid placing the wiring harness near mounting holes and visible cutouts.

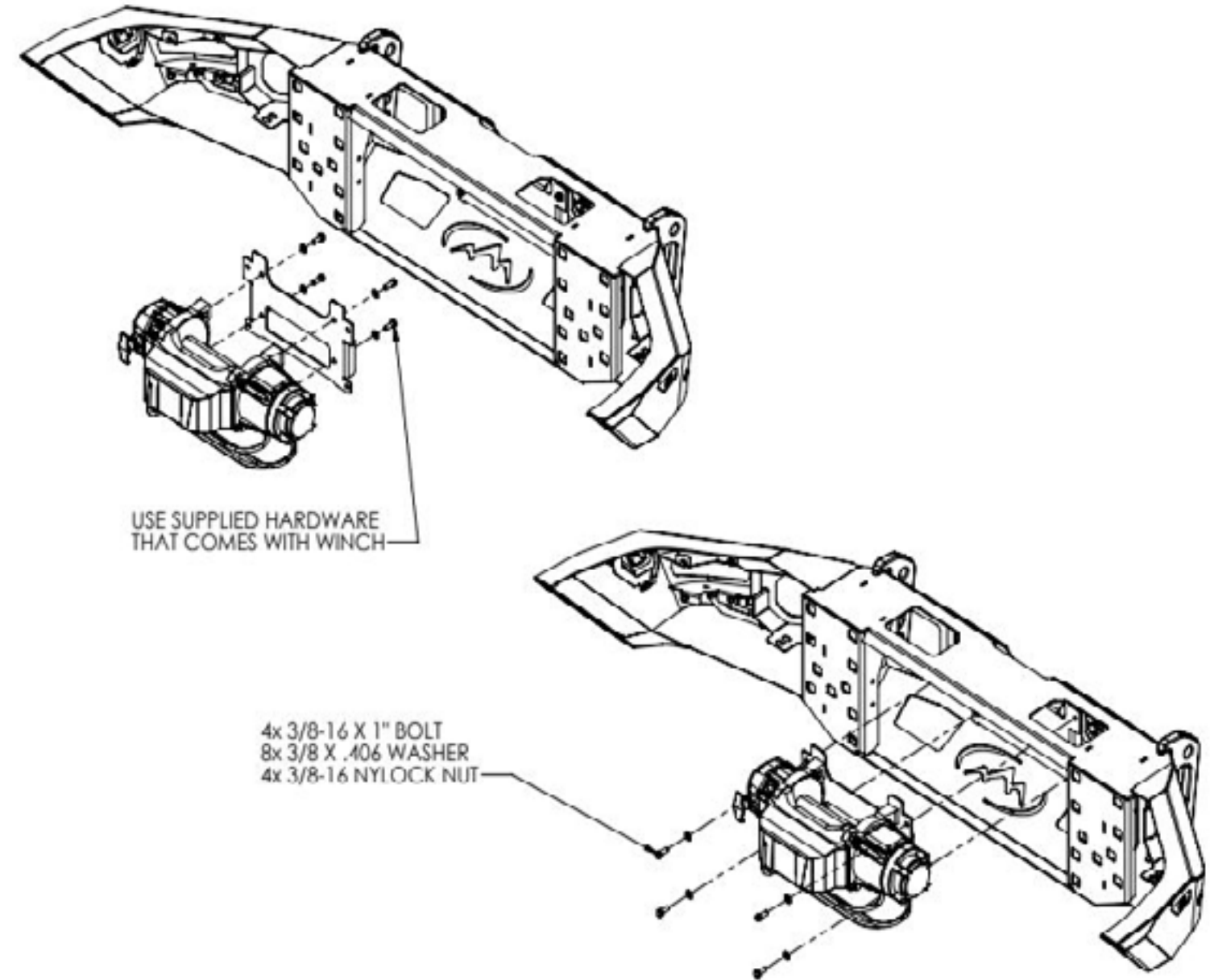
## 10 CLEVIS INSTALLATION

Mount the clevises using the supplied clevis hardware as shown below.



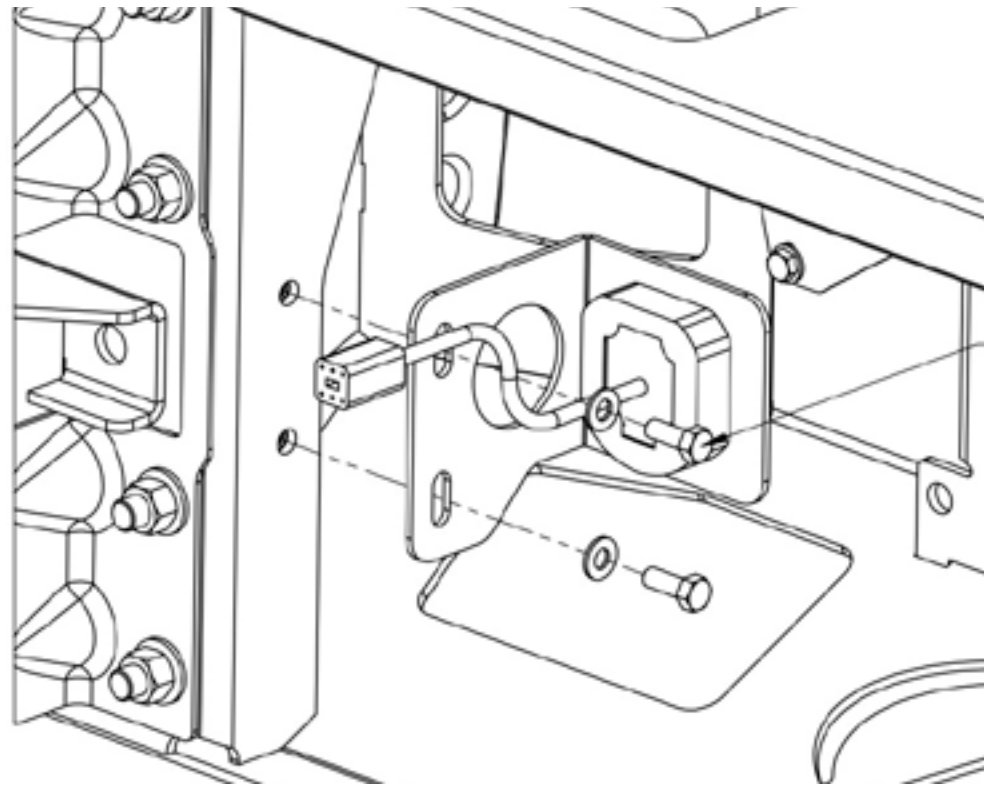
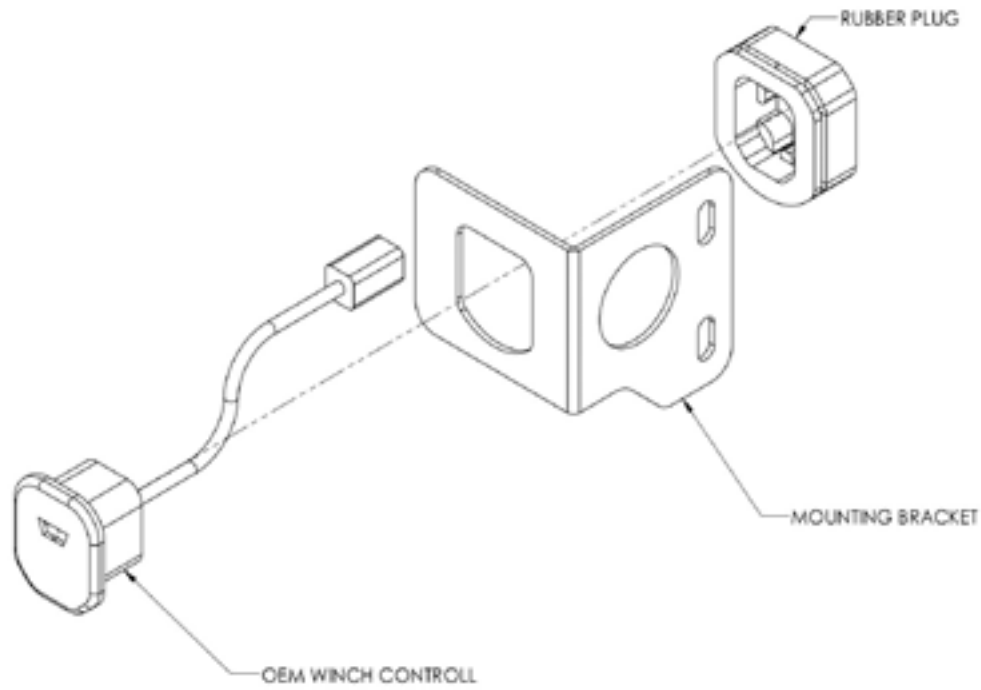
## 11 WINCH INSTALLATION (NON POWER WAGON)

Mount the winch using supplied hardware and winch plate with included hardware.



## 12 WINCH BUTTON BRACKET INSTALLATION (POWER WAGON)

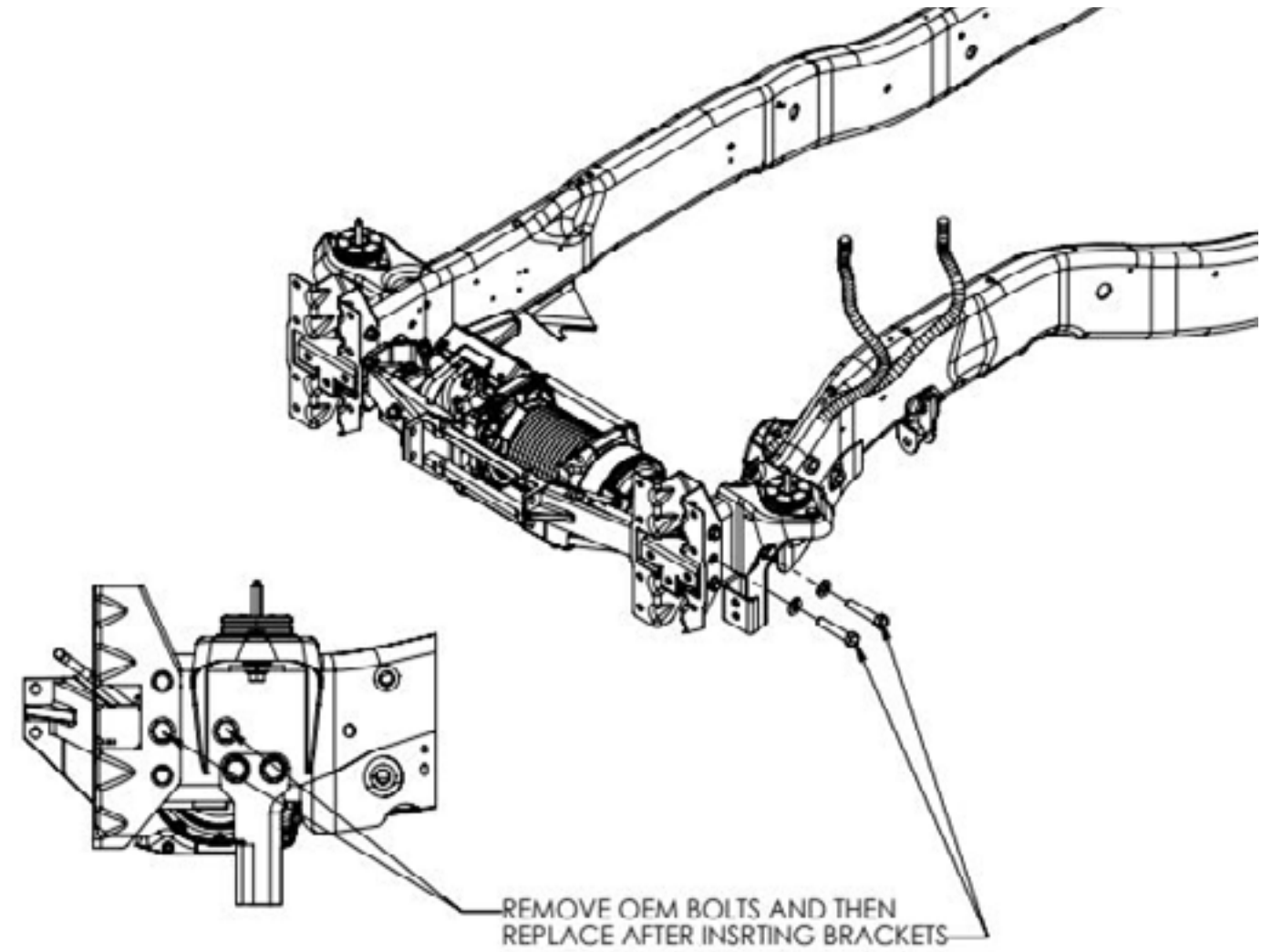
Assemble the winch control as shown and mount to the bumper with the supplied hardware



2x 5/16-18 x .75 HEX BOLTS  
4x 5/16 WASHERS  
2x 5/16-18 NYLOCK

## 13 WINCH INSTALLATION (POWER WAGON) USING OEM WINCH

Remove OEM winch hardware to install bumper brackets.

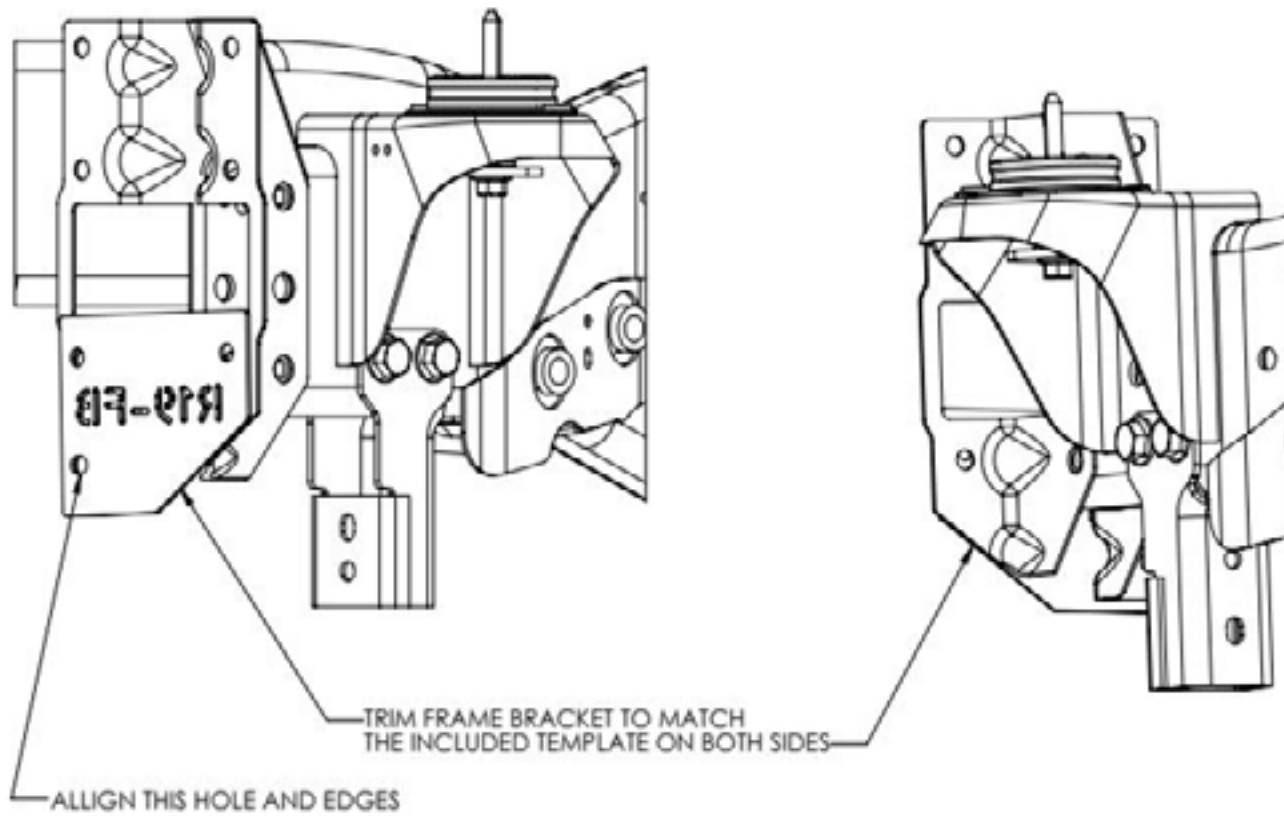
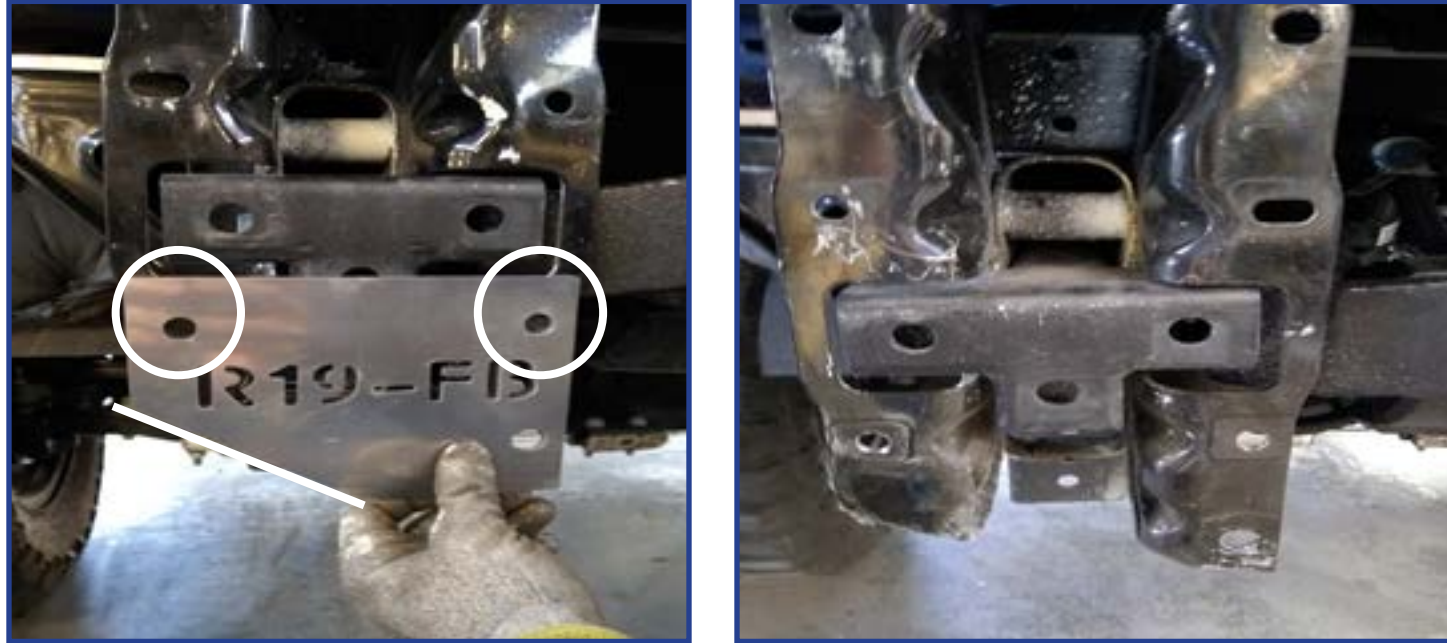




# BUMPER INSTALLATION

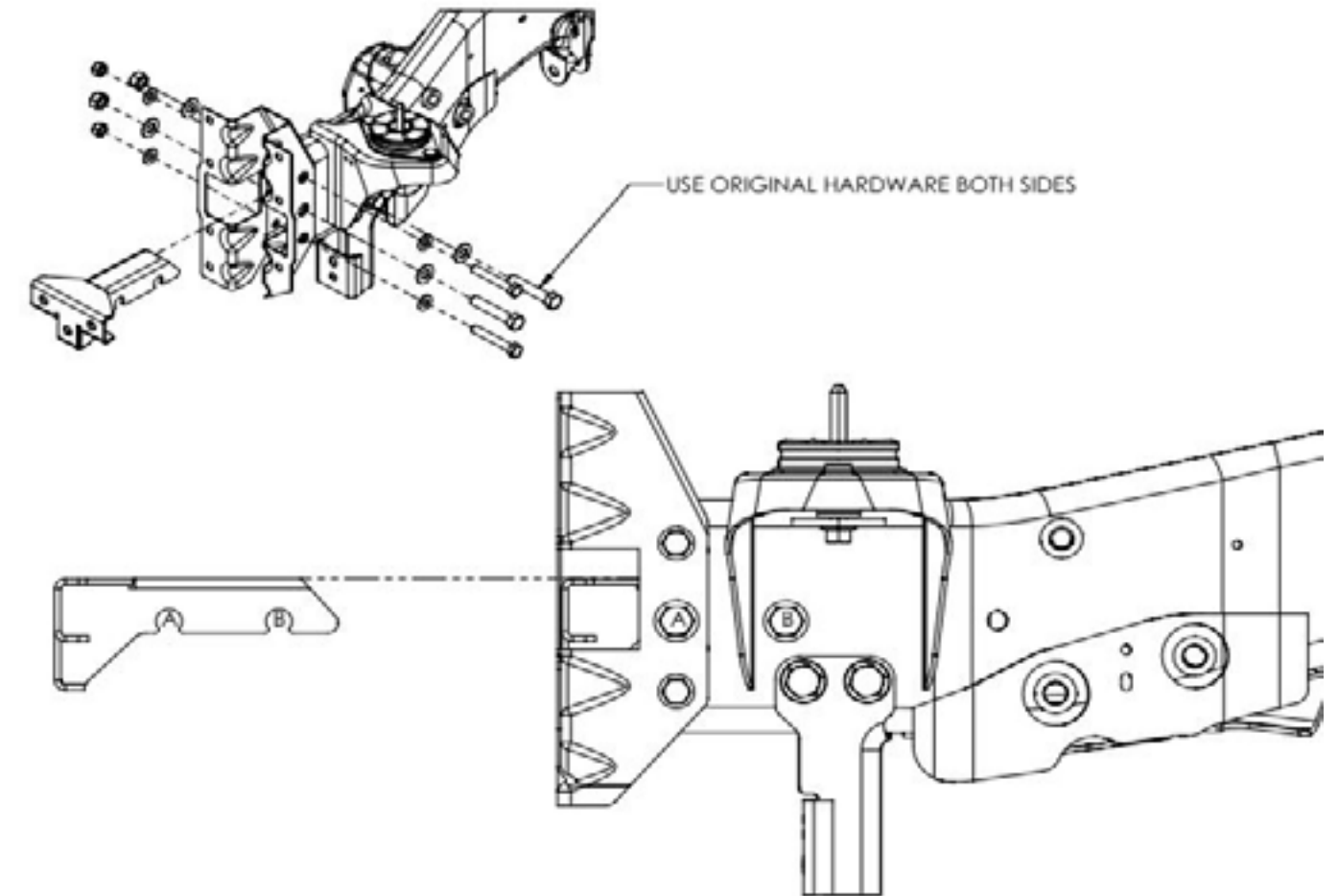
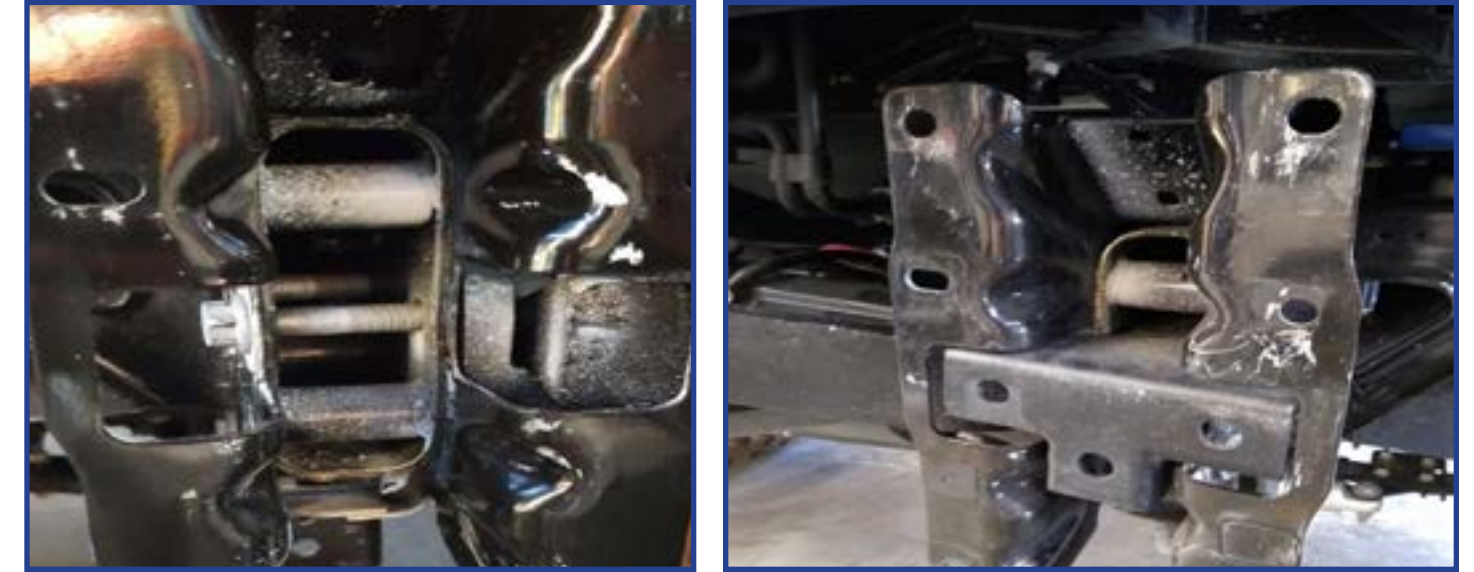
## 14 FRAME MOUNT MODIFICATION

Using the R19-FB template trace the location of the 2 added mounting holes (as circled) and corner to be removed (line shown) to both frame mounts. Drill out the holes and remove the corner.



## 15 INSTALLATION OF FRONT BUMPER BRACKETS

Remove OEM hardware and install both front brackets.

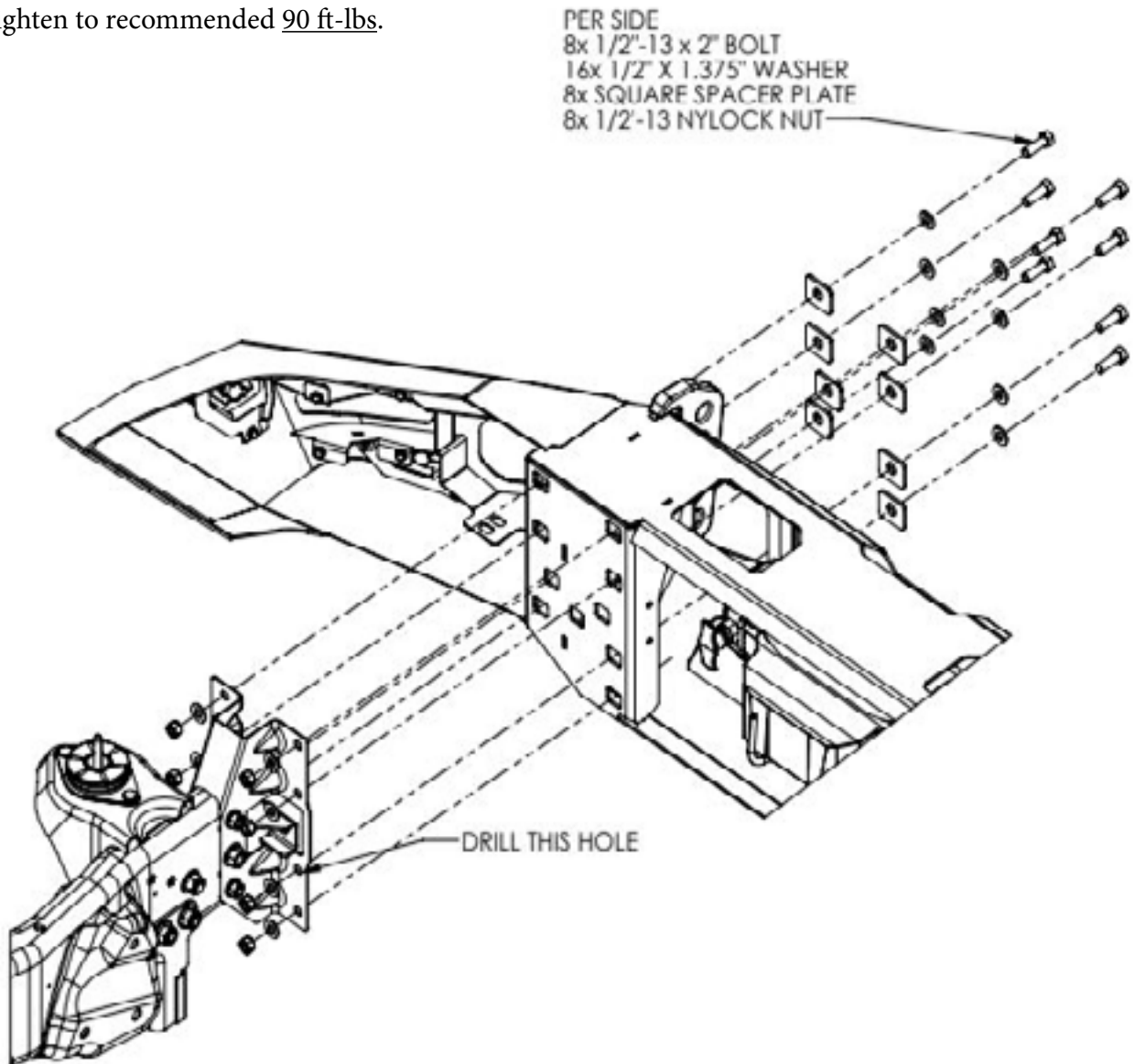




## 16 INSTALLATION OF FRONT BUMPER

Center the bumper with the vehicle and align gaps between the grille and bumper to your preference before mounting. Mount the front bumper using the supplied front bumper hardware as shown below.

Tighten to recommended 90 ft-lbs.



## 17 RECONNECT WIRING HARNESS

Reconnect the parking sensor and cornering light wiring harness to the vehicles electronics.