

INSTALLATION GUIDE

Mule Ultra Rack



CONTENTS

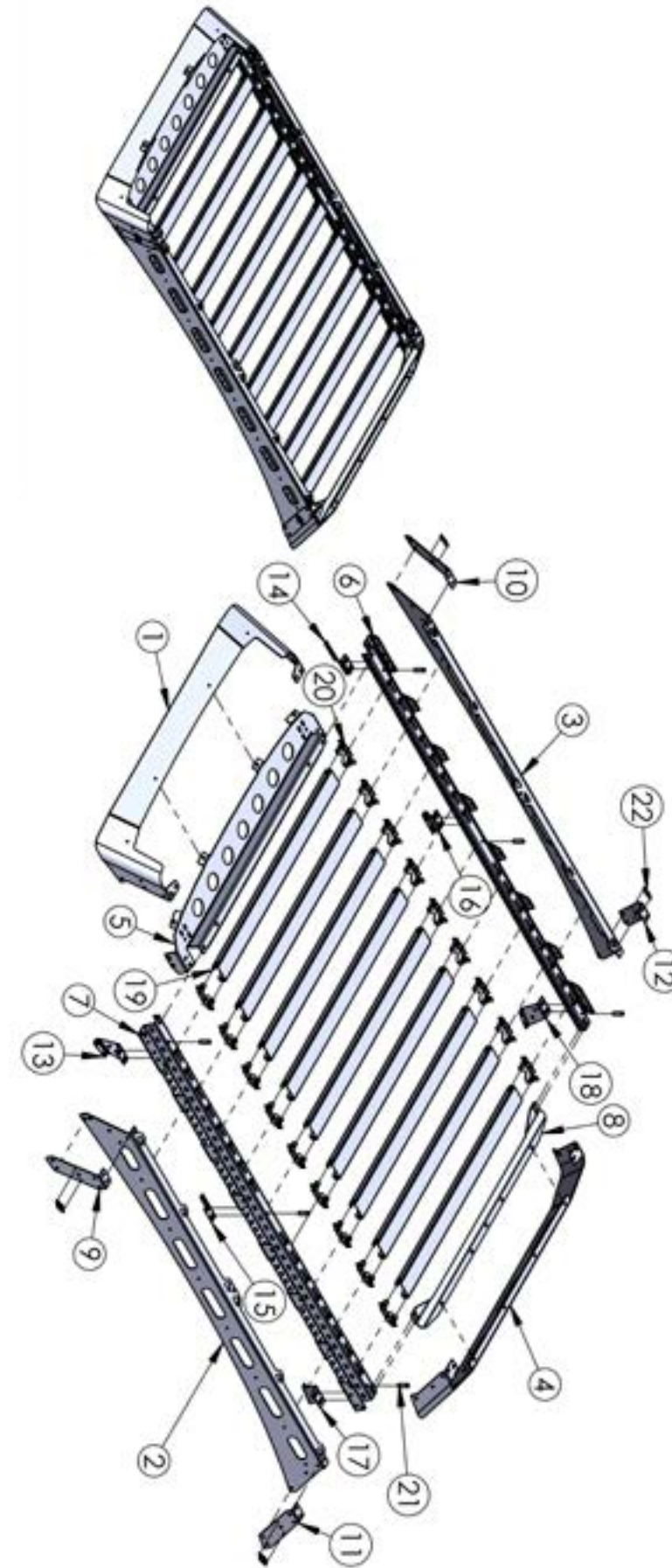
Included Hardware:

- (10) roof rack load bars
- (2) side fascia skins
- (2) side fascia internals
- (1) rear fascia internal
- (1) Rear fascia skin
- (1) front fascia internal
- (1) front fascia skin
- (4) tower skins
- (2) small bracket A
- (2) small bracket B
- (2) small bracket C
- (20) small load bar brackets

- (38) 5/16-18 3/4" Button Head Bolts
- (44) 5/16" -18 Nyloks
- (102) 1/4" -20 x 3/4" Button Head Bolts
- (102) 1/4" - 20 Nyloks
- (6) Sleeves
- (6) 5/16" -18 x 2 1/2" Long button head bolts
- (6) Square aluminum brackets
- (4) Circle aluminum brackets
- (24) 5/16" -18 x 1" bolts
- (24) 5/16" washers
- (12) 5/16" long clip nuts

Disclaimer

Expedition One is not responsible for any damages to vehicle.
We always recommend professional assistance when installing our vehicle products.

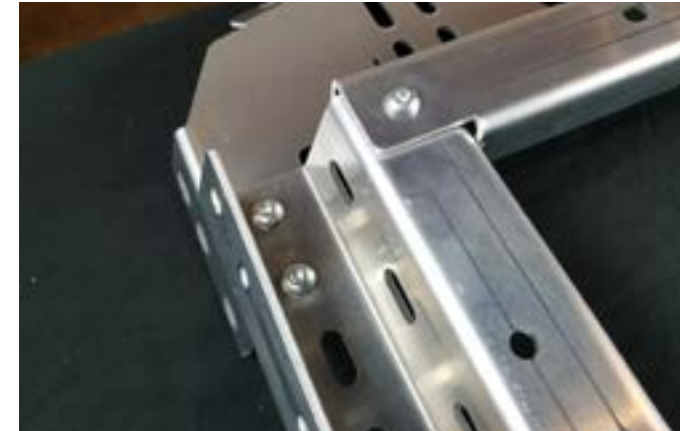


ITEM NO.	QTY.	PART NUMBER	DESCRIPTION	ITEM NO.	QTY.	PART NUMBER	DESCRIPTION
1	1	ML-FJ-ULTRA-LTBAR-RK101	SHELL FRONT	12	1	ML-FJ-ULTRA-LTBAR-RK112	SIDSEAM JOINER REAR RIGHT
2	1	ML-FJ-ULTRA-LTBAR-RK102	SHELL SIDE LEFT	13	1	ML-FJ-ULTRA-LTBAR-RK113	ROOF MOUNT FRONT LEFT
3	1	ML-FJ-ULTRA-LTBAR-RK103	SHELL SIDE RIGHT	14	1	ML-FJ-ULTRA-LTBAR-RK114	ROOF MOUNT FRONT RIGHT
4	1	ML-FJ-ULTRA-LTBAR-RK104	SHELL REAR	15	1	ML-FJ-ULTRA-LTBAR-RK115	ROOF MOUNT MID-LEFT
5	1	ML-FJ-ULTRA-LTBAR-RK105	FRONT BRACE	16	1	ML-FJ-ULTRA-LTBAR-RK116	ROOF MOUNT MID-RIGHT
6	1	ML-FJ-ULTRA-LTBAR-RK106	INTERNAL RAIL RIGHT	17	1	ML-FJ-ULTRA-LTBAR-RK117	ROOF MOUNT REAR LEFT
7	1	ML-FJ-ULTRA-LTBAR-RK107	INTERNAL RAIL LEFT	18	1	ML-FJ-ULTRA-LTBAR-RK118	ROOF MOUNT REAR RIGHT
8	1	ML-FJ-ULTRA-LTBAR-RK108	REAR BRACE	19	9	ML-FJ-ULTRA-LTBAR-RK119	SPREADER
9	1	ML-FJ-ULTRA-LTBAR-RK109	SIDSEAM JOINER FRONT LEFT	20	18	ML-FJ-ULTRA-LTBAR-RK120	SPREADER BRACKET
10	1	ML-FJ-ULTRA-LTBAR-RK110	SIDSEAM JOINER FRONT RIGHT	21	6	ML-FJ-ULTRA-LTBAR-RK121	SPACER
11	1	ML-FJ-ULTRA-LTBAR-RK111	SIDSEAM JOINER REAR LEFT	22	4	ML-FJ-ULTRA-LTBAR-RK122	MULE LOGO BADGE

ATTENTION: When assembling the Mule Ultra Rack, remember to hand-tighten all bolts relatively loose until the very end of the install. This allows everything to fit into place before everything is tightened down.

Rack Assembly Installation:

Lay out front and side support braces as shown with provided 5/16" bolts and nuts. (see photo below)

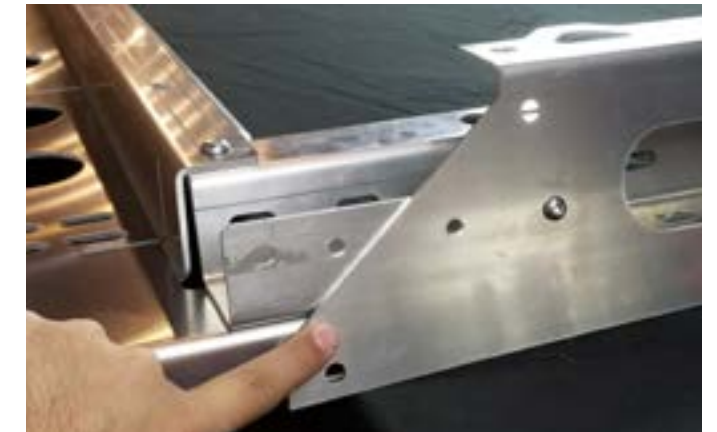


Attach rear reinforcement brace as shown with 5/16" bolts. Repeat on both sides and keep bolts loose.



Lay out side fascia pieces and attach with 1/4" bolts (remember to hand tighten but keep loose).

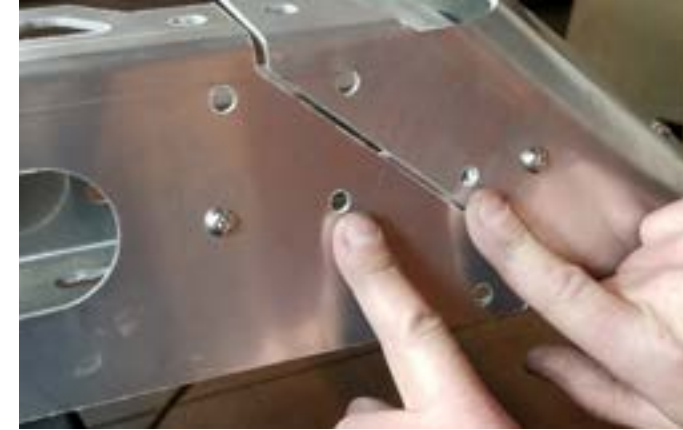
Shallow angle faces towards front end of roof rack as shown in bottom right photo!



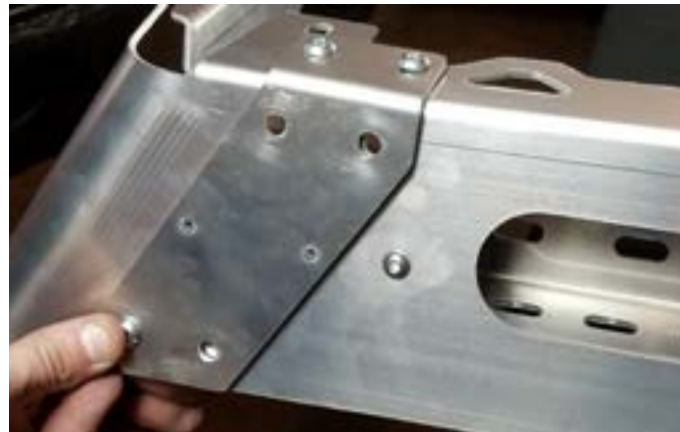
Attach rear fascia as shown with 5/16" bolts and nuts.



Make sure not to put any bolts in the holes pointed at below!



Next attach rear corner connectors with 5/16" bolts shown in photo below. (remember to hand tighten but keep fairly loose!)

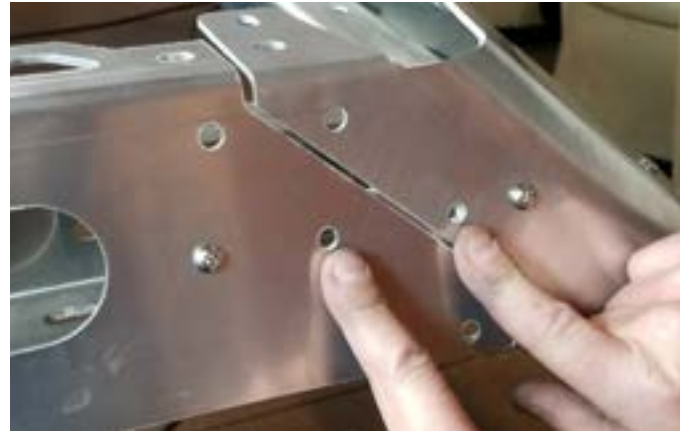


Attach front fascia piece shown bottom left photo along with a single spacer piece for each hole.

NOTE: If you bought fascia with light bar cutout, we recommend installing light bar prior to installing front fascia to make things easier.



Attach front corner connectors as shown with 5/16" bolts and nuts, remembering not to place any bolts in the holes pointed at in image below. (hand tighten bolts but keep relatively loose)

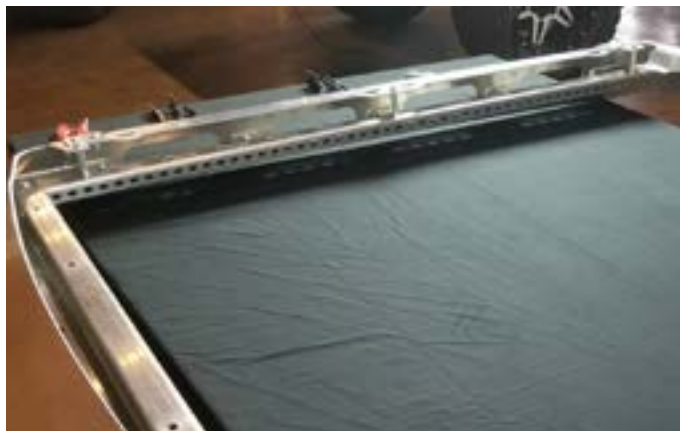


Next, assemble load bars with provided end mounts using nuts and bolts. Keep hand tight but loose.

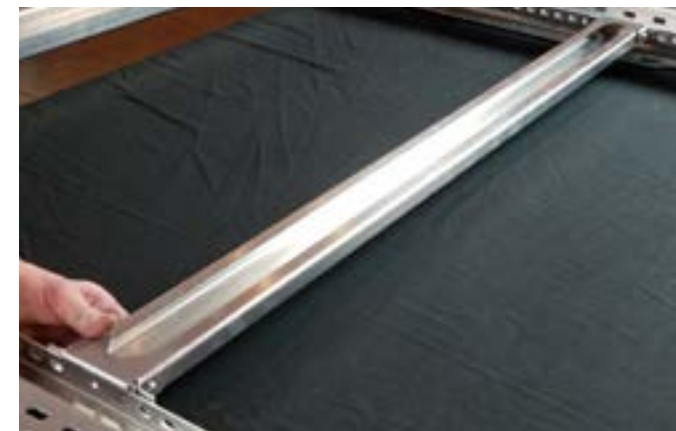


Next, attach reinforcement spacers as shown below (total of 6 hole locations) with provided bolts & nuts. There are three mounting hole locations on each side.

****NOTE - We recommend installing the center rack cylinder reinforcements and hold off on the other cylinder reinforcements (front/rear) till after the rack is installed on the roof. You will need the extra space to get hands through to tighten down the bolts to the mounting feet. (corner mount bolts)**



Flip roof rack on its back and attach load bars into desired locations as shown in photo. Using provided nuts and bolts, you may begin tightening down each load bar with two bolts/nuts for each side of load bars as shown.



Flip over roof rack after all load bars are tightened down with tools and begin tightening all other rack bolts to prepare to mount onto vehicle.

**** We also recommend sliding the front fascia rubber trim on at this point****

Mount 'Feet' Install

Start on the front driver's side with the front mounting 'feet' bracket as shown in Fig 1A. Before placing the mounting bracket into position, place a metal spacer that is provided in kit over the stock holes of the roof. This raises the mounting bracket up a bit more for the roof rack. Once in place, put the mount bracket on top and secure with provided bolts. Do this for both front mounts. (Fig 1B)

*Recommended to nudge the front mounts towards the rear of vehicle after bolts are in loosely snug in place.

Fig 1A



Fig 1B



Next, we'll move to the center mount brackets. Place another set of large spacers over the center roof mounting holes. (1 spacer on each side of vehicle). (Fig 1C) Then place the mounting bracket over the top of spacer and secure with provided bolts using a 13mm wrench.

Fig 1C



Last, we'll attach the rear mounting 'feet' into position. The provided spacers for the rear mounting holes are optional but for our scenario we did not need to place them first before tightening down the mounting bracket. They allow the rear end of the roof rack to sit higher based on personal preference.

Fig 2A



Fig 2B

Lastly, with the provided clip nuts, attach two of them to the top of each rack mount as shown in Fig 2 B with the threaded end facing downward.



Next, with the help of a friend, place the roof rack onto the roof and rest it on the mounts. Nudge the rack as necessary and check for proper alignment around the whole vehicle.

Loosely insert one bolt into each corner of rack and double check hole alignment before you begin securing and tightening all of the mount bolts into place. See Fig 3A and 3B on next page.

You will likely need to use a socket extension and socket bend for the corner bolts.





Once all of your bolts are tightened down and secured, you should be all done!

If you have any additional questions or feedback, email us at info@expeditionone.biz