

INSTALLATION GUIDE

2010-2018 Ram 2500/3500 HD Front Bumper



EXPEDITION ONE
OFF-ROAD RESEARCH & EQUIPMENT

PACKAGED CONTENTS



Frame Mount Hardware

- 1 1/2" Bolts - 8
- 1/2" Nyloc Nuts - 8
- 1/2" Washers - 16



Side Wing Hardware

- 9/16 - 2" Bolt - 12
- 1/2" Washers - 24
- 9/16 Nyloc Nuts - 12

INSTALLATION

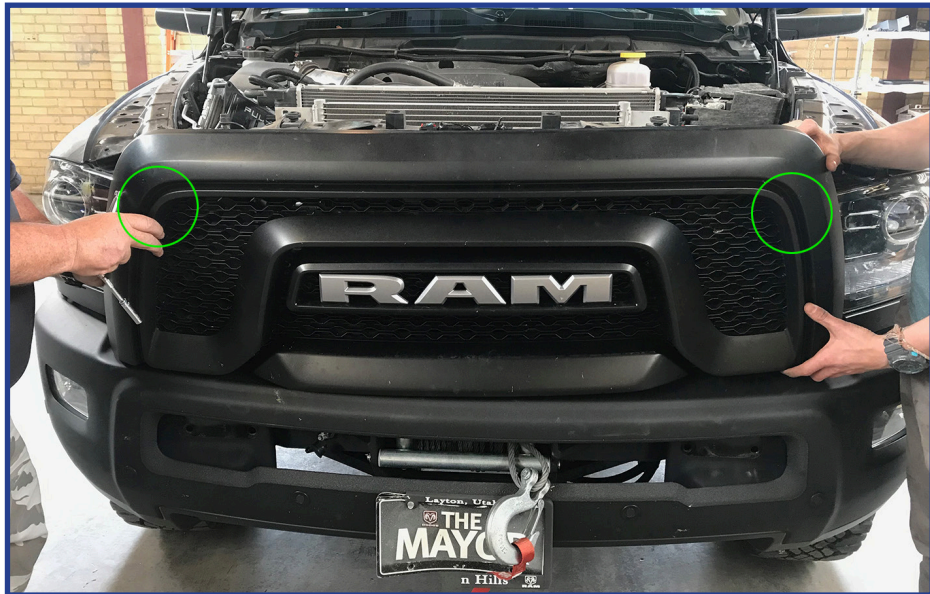
1

Start by opening hood and removing engine mud guard.



Remove stock grille face. Two screws located behind grille one passenger and driver side.

2



3

Remove the stock bumper



4 bolts are located next to headlights on both sides. 2 on upper portion of bumper and 2 on the lower.

4



5

Under side view of stock bumper mount.



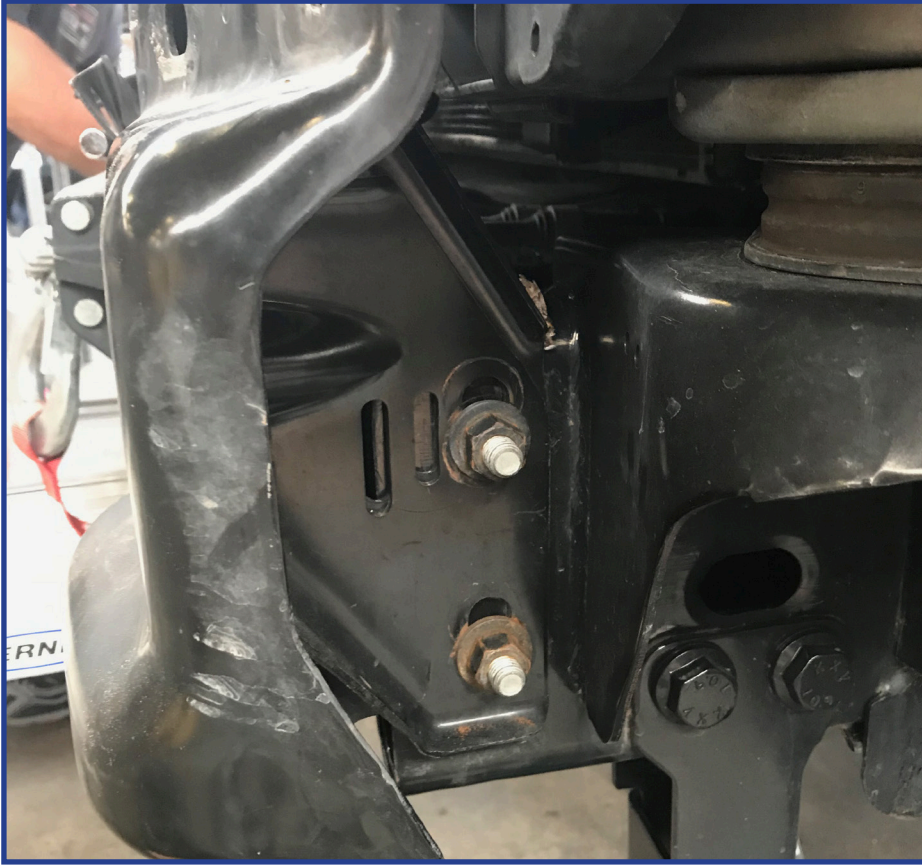
After unscrewing bolts and nuts unplug stock wire harness for fog lights and parking sensors.

6



7

Remove nuts from outer portion of stock bumper frame mount. MAKE SURE TO SECURE STOCK WINCH WITH BENCH/JACKS BEFORE REMOVING NUTS



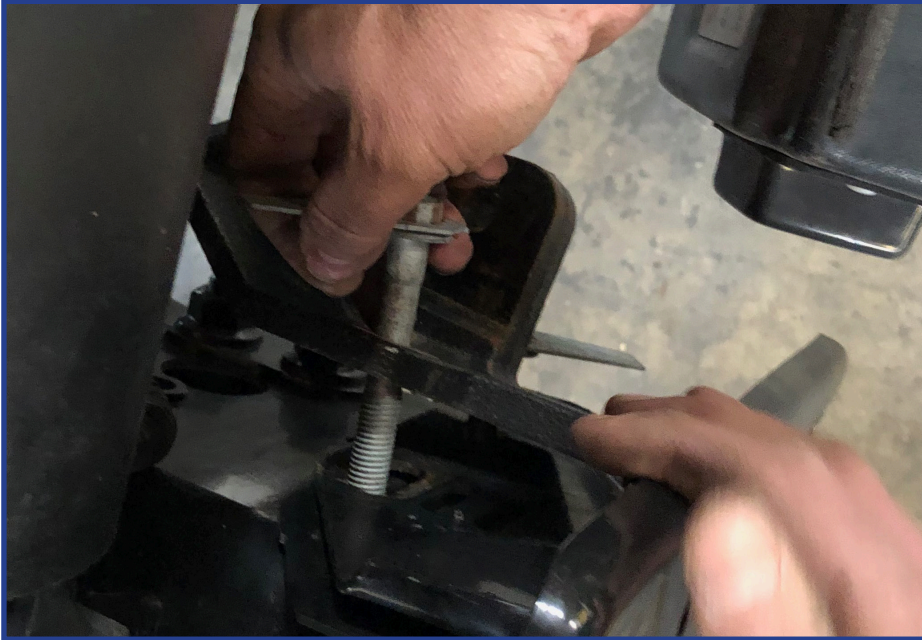
Remove lower bolt from winch frame bracket. This will allow the winch to swing slightly to the back. You can now unbolt the winch from the cast iron frame bracket and remove it from center of frame

8



9

Once the winch has removed you can take upper bolt from frame mount.



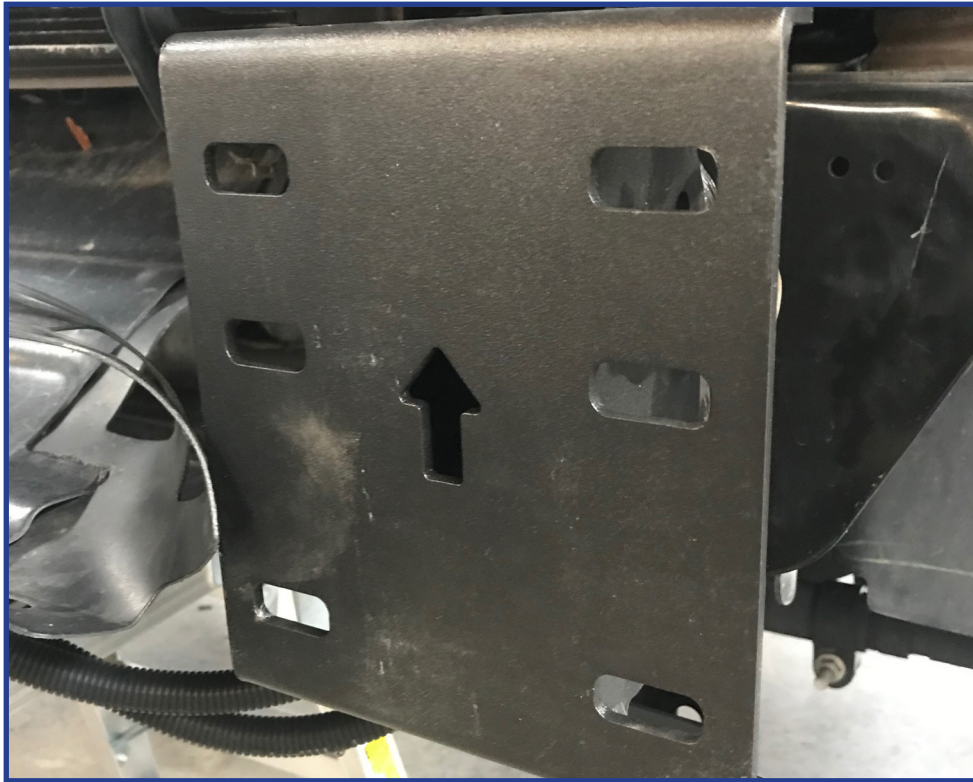
Remove all frame mount brackets from front of vehicle.

10



11

Place provided frame mount bracket on mounting point and position holes to align with stock.



Assistance may be required to reinsert stock bolts into stock cast winch frame mount bracket.

12



13

Only insert top stock bolt through frame mount bracket and cast winch frame mount bracket.



Hand twist nut on stock bolt to lightly secure mounting brackets.

14



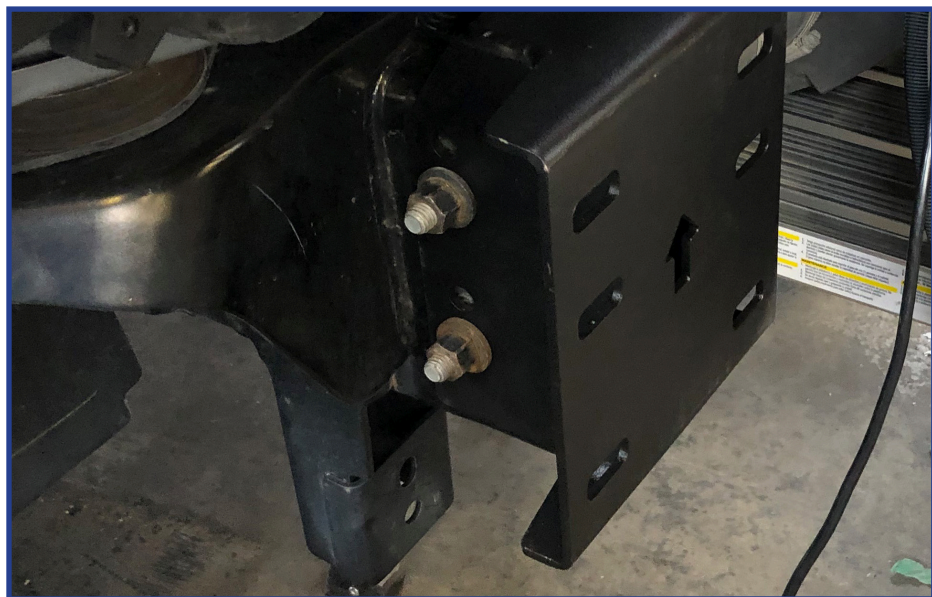
15

Lift winch off support and reinstall on loosely secured cast bracket, this will require loading the winch mount in at an angle on to the cast frame mount.



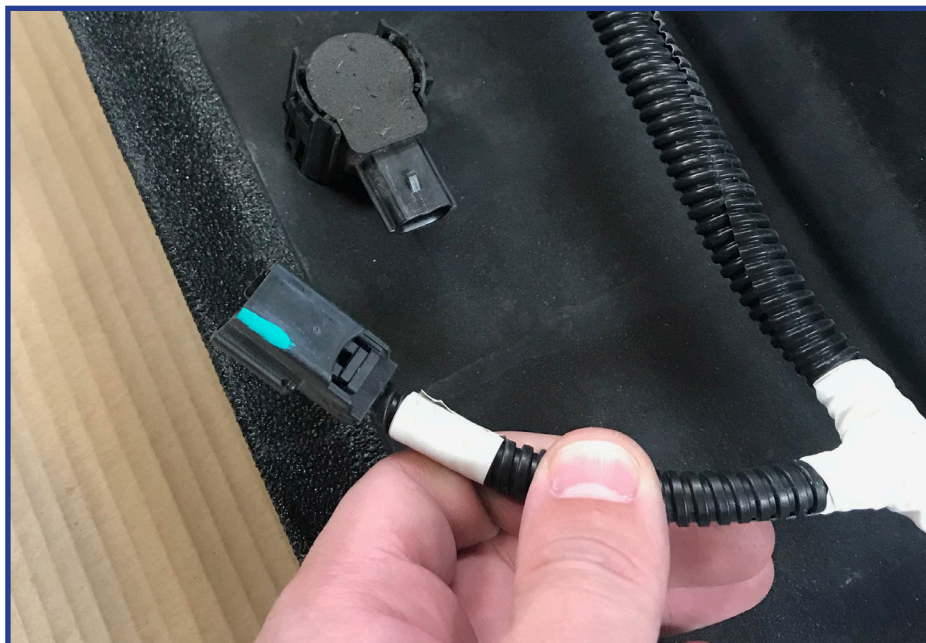
Secure the frame mount bolts and winch mount bolts.

16



17

Remove sensor harnesses and sensors from stock front bumper.



Sensor clips may need to be shaved down to fit your new bumper.

18



19

Align clevis mount and clevis spacer against bumper.



Insert 9/16 - 2" Bolts with washers on either side and loosely tighten for both side wings.

20



21

Rewire sensors in new bumper through large bottom hole.



Align bumper and side wings and fully tighten.

22



23

Align bumper and fasten to frame with provided 1 1/2" bolts, washers, and nylocs through front port holes. Using stock tow rings will require using stock bolts.



You are now finished, make sure to recheck bolt and nut tightness.

24

