

INSTALLATION GUIDE

Jeep JK Mule Front Bumper



Included Hardware:

- (4) Dog Bone Nut
- (2) Single Jam Nuts
- (10) 1/2"X1.5" Hex Bolts
- (10) 1/2" f436 flat washers
- (4) 3/8" Hex Bolts, washers and Nylocks
- (8)lightPort Bolts and Nuts

Tools:

1. Standard and Metric Socket Set
2. Standard and Metric Wrenches

Skill Level:

4/5 stars (Professional install recommended)

Disclaimer

Expedition One is not responsible for any damages to vehicle.
We always recommend professional assistance when
installing our vehicle products.

Pre-installation Notes:

If you are installing a winch you must install the fairlead before installing the winch. If you are installing auxiliary lights for underneath the hoop, we recommend that you install them before you install the winch. The fairlead holes in the bumper may be too small for some fairlead bolts. We recommend swapping out the bolts for a grade 8, 3/8" bolt, or you may choose to drill the holes out for the bigger size if so desired.

Remove stock outer bumper and plastic shrouding: First remove the obnoxious plastic air dam that sits below the stock bumper. This will allow easy access to the bumper bolts. If your vehicle is equipped with the factory fogs, it is easiest to let them remain in the bumper for now.

Undo the wiring plugs on the back of each light. After that, all you need to do is remove the 8 bolts, 2 on the inside and 2 on the outside of each frame rail respectively. Your bumper should be free at this point. You will also want to remove the plastic trim piece that sits under the bumper and grill. It is held on with plastic retaining screws.

You have 2 options: 1) Carefully and slowly, with little downward pressure, undo the screws and back them out. If that doesn't work go with the next option, which is usually faster.

2) Get a good grip on the trim piece and yank it off. You will also want to unclip the plastic retainer pieces on the frame that hold the stock light wiring harness on, if your vehicle is so equipped. (Below left) You should be ready now to install your bumper.



BUMPER INSTALL

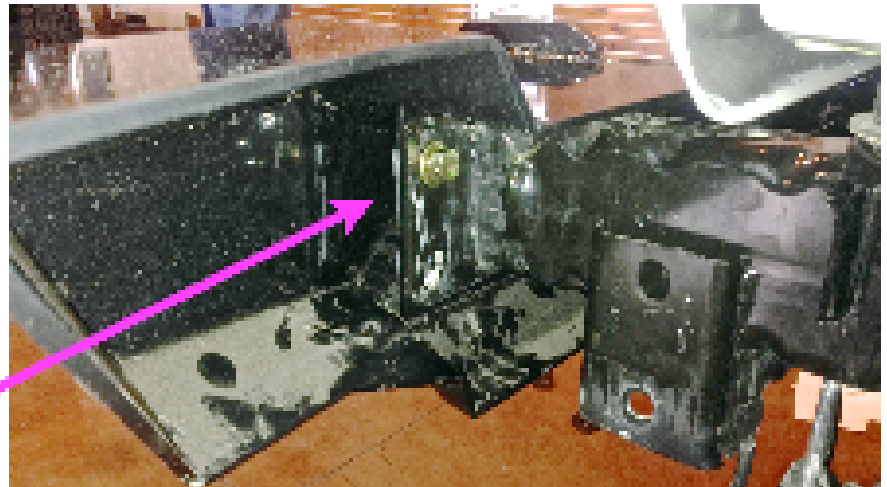
1. Put bumper in place on frame pegs

2. bolt on (hand tight) one of the bolts and dogbone nuts on the drivers side frame using 3/4" socket so the bumper doesn't fall off while your installing the reinforcement brackets

3. Now hand tighten the bolts into the frame through the passenger side frame and passenger side reinforcement bracket, you may need to lift the bumper slightly to get the holes in the bracket to line up with the factory holes in the side of the frame.

4. Now hand tighten a bolt using the dogbone nut into the front of the frame (like you did on the drivers side) to ensure the bumper wont fall off while you work on the drivers side.

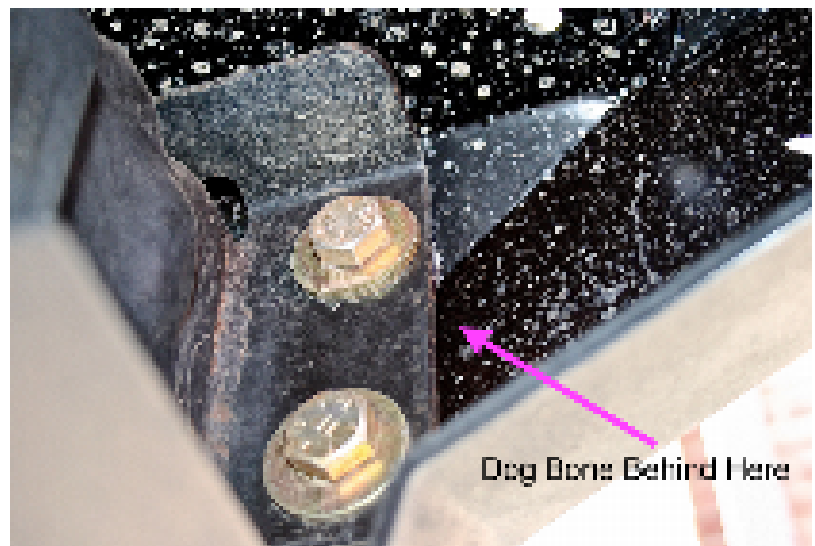
5. Install the drivers side reinforcement bracket the same way you did the passenger side by lifting the bumper slightly to align the holes on the side of the frame pegs



1. Now install all 4 of the dogbone nuts and 1/2" bolts for both the passenger and drivers side through the front of the frame. Hold the dogbone nuts on the front side of the inner bumper metal that is pressed against the front of the frame pegs and slick the 1/2" bolt through to the front of the frame into the dogbone nuts and tighten bolts just enough to make sure you can still adjust the bumper slightly so you can level the bumper slightly horizontally later on.



2. Once you have leveled the bumper horizontally you can finish tightening all the bolts including the frame reinforcement bolts that go through the sides of the frame pegs using the jam nuts. **Note: jam nuts will stick out slightly from the bottom of the frame openings. this is to make it easier to hold the nuts in place while installing the higher bolts inside the holes of the frame pegs.**



3. Install lights using the smaller bolts and nuts into the light ports and your ready to go

4. make sure to tighten the bolts after your first excursion or after a week of driving your vehicle to adjust for any settling that has occurred

