

INSTALLATION GUIDE

Trail Series 2 Front Bumper



Hardware Kit



Front Bumper Install

Remove factory bolt and reinforcement brackets off both sides of both frame rails. Save the stock bolts for reuse.

Attach frame mounting bracket as shown on driver's side frame rail in Fig 1B.

Attach mirrored mounting bracket to passenger side with the same procedure from Fig 1A & 1B.

*This bumper has a high and low mounting option shown here with bolt in lower hole for the higher mounting position.

Tighten but do not fully secure as you'll need adjust as needed when bumper goes on the frame mounts

FIG 1A



FIG 1B



FIG 1C



Next, place the included small frame bracket (Fig 2A) into position on the outer side of frame as shown.

FIG 2A



Secure with stock bolts that were removed earlier but keep fairly loose.

FIG 2B



Take the angled bolt retainer piece (Fig 2C) and insert it inside the frame opening from underneath.

FIG 2C



The retainer bolt should pop out from the top hole shown in Fig 3A

FIG 3A



At this point, we will want to secure the filler skid plate. Using that same bolt from prior step, we will need to position the skid plate tab using the same bolt and secure with provided washer and nut.

*Washer and nut are shown attached but you'll need to place the tab over the bolt first.

FIG 3B



FIG 3C

Top filler skid plate tab secured with washer and nut.



At the bottom of the frame, insert the provided flanged rivet nut. If it doesn't quite fit, you may need to use a large drill bit or step bit to slightly increase the hole size.

*Take this step slow as you don't want to drill out the hole larger than is needed. You may also be able to get it to fit by bumping it with a rubber mallet.

You can now secure the bottom of filler skid plate to the rivet nut with provided washer/bolt.

We can now carefully place the bumper onto the vehicle and into position over the frame brackets.

FIG 4A



FIG 4B



FIG 4C



There are a number of secure points that need to be secured with washers and bolts but we'll start with the top. There are 3 locations shown in Fig 5A to the right that will need to be secured with provided washers, nuts and bolts.

It is recommended to keep most of your bolts throughout installation fairly loose to make sure everything is in place before you tighten down all bolts.

Next, we'll attach additional bolts to the upper side tabs shown inside the bumper that attach to the small frame brackets.

Take the included nut retainer brackets and place them into position (Fig 5C) on each side of the main vehicle frame. There are two holes that align with nut retainer on each side.

FIG 5A

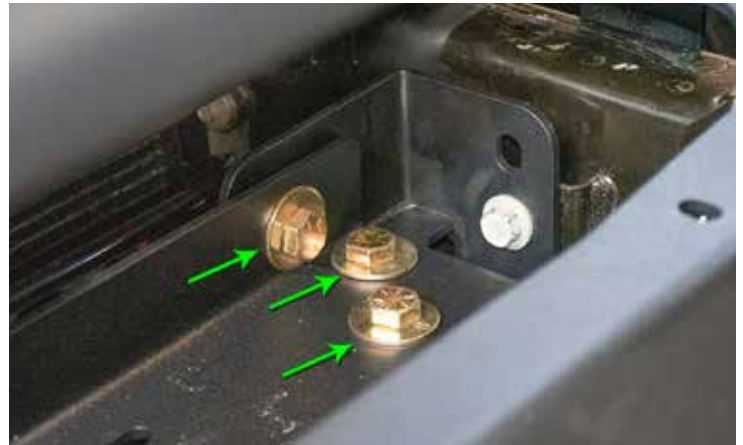


FIG 5B



FIG 5C



If any of the holes for the nut retainers are a bit small for the bolts to go through, you may need to increase the size just a little with a drill step bit.

Shown are the washers and bolts secured into the provided nut retainer on the inside of frame. Not shown are the outer frame nut retainers that require 2 washers/bolts as well.

At this point, everything should be loosely secured in place. Double check the bumper spacing to vehicle is to your liking and begin tightening and checking all bolts are now completely secured down to the vehicle frame.

Any questions or concerns, please don't hesitate to email us at info@expeditionone.biz

FIG 6A



FIG 6B



