

INSTALLATION GUIDE

16+ GMC Canyon/Chevy Colorado Rear Bumper (+ dual swing)



FIG 1A

Notice: Canyon/Colorado may have slight differences in the stock bumper removal but the same principal steps apply regardless.

First, we'll need to remove the license plate and unplug the trailer wire from stock bumper.



FIG 1B

For this step, you'll need to pull the red locking clip out before disconnecting the plug.



FIG 1C

Next, we'll be unplugging the light wiring on both sides from behind the stock bumper where the license plate was removed from.



Using a 21mm socket wrench, begin unbolting the two frame bolts on both sides that are holding the bumper in place.

*Make sure to hold onto these stock frame bolts as they will be reused later in the install!

Shown in Fig 2A is on the rear driver's side of vehicle frame.

FIG 2A



FIG 2B

At this point, you should be able to carefully remove the entire bumper from vehicle.



FIG 2C

Next, we'll be taking the new frame brackets and placing them into position as shown in Fig 3A (shown on drivers' side). You will be reusing the stock frame bolts you removed earlier from the stock bumper and inserting them into the positions shown to right.

FIG 3A

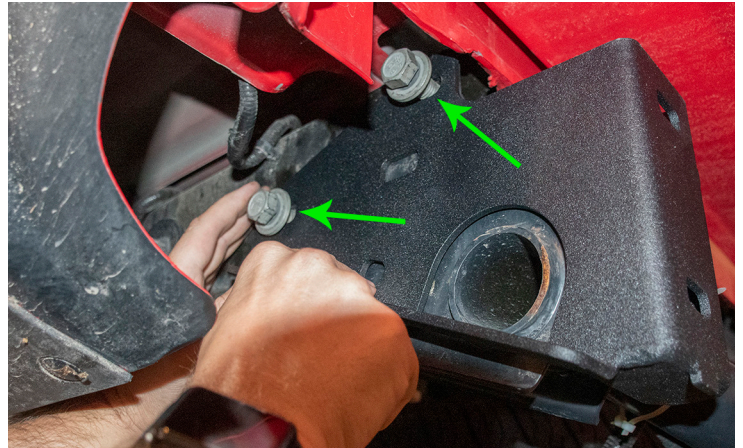


FIG 3B

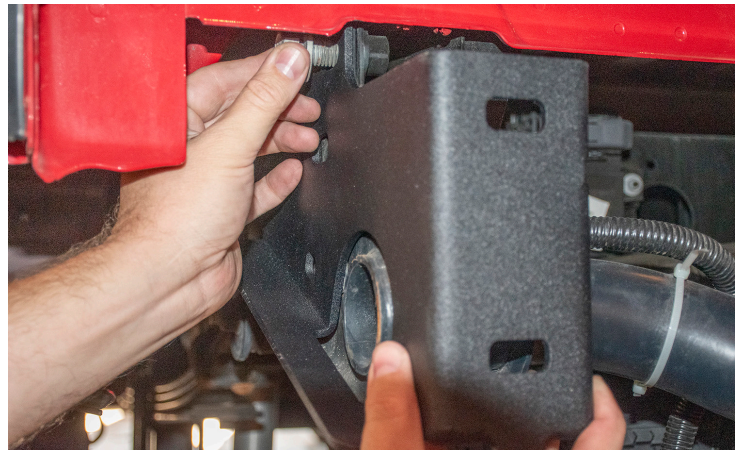


FIG 3C

Once you have loosely secured the two stock bumper bolts for the frame mount, you will then need to drill a hole (Fig 3C) to fit a 1/2" bolt. Once your hole is drilled, you can then place the 1/2" provided bolt through and secure with washer and locking nut. Do this for both drivers and passenger side frame.

In some cases we recommend loosening the hitch receiver assembly out of the way if your having trouble drilling the hole and then re-mounting the hitch receiver after.

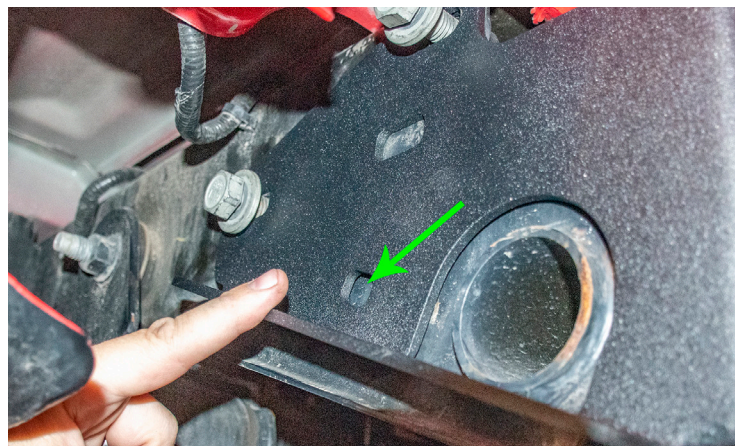


FIG 4A

Shown is the new drilled hole and 1/2" bolt secured with washer and locking nut on the inside on the passenger side from underneath.

Once the frame brackets are loosely secured in place, carefully place the rear bumper into position and have someone insert the provided bumper bolts to secure bumper into position from underneath. Keep these hand tight but still adjustable.

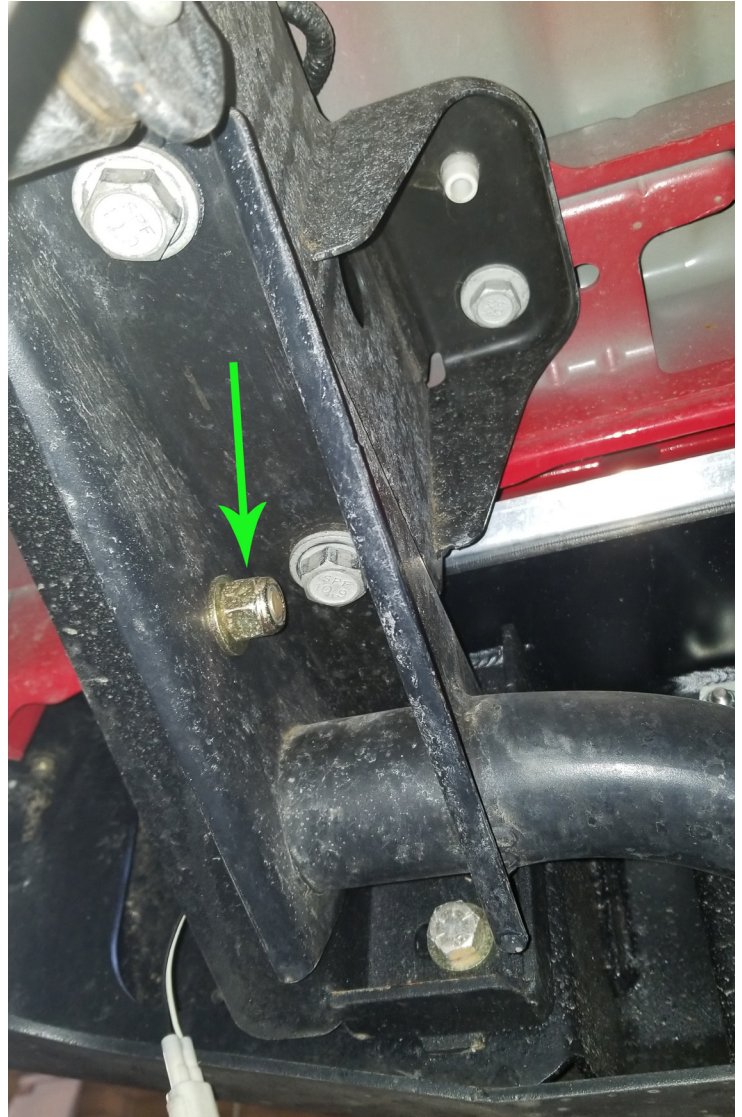


FIG 4B

Once happy with spacing and alignment, go ahead and tighten down all bolts securely.



Tire Carrier Arm Install

*We recommend installing only the arm that won't have the tire mount on it in order to do the tire mount install on the page 10.

Using marine-based lithium grease, grease your bearings.

Place your greased bearing into the bottom of the arm as shown.

Now place grease seal as shown inside the bottom of the arm.



Place arm into position, holding the bearing/grease seal with hands, onto the spindle.

You will need to wiggle until it drops into place. You may also swing it back and forth a few times to get it to set properly.



Add your top bearing and drop it into the arm as shown.



Drop provided washer onto the spindle



Drop the included large spindle bolt into place and tighten down into place till its nice and tight. Then nudge it back a hair so it won't bind.



Using provided anti-seize, paste it around the threaded area of cap.



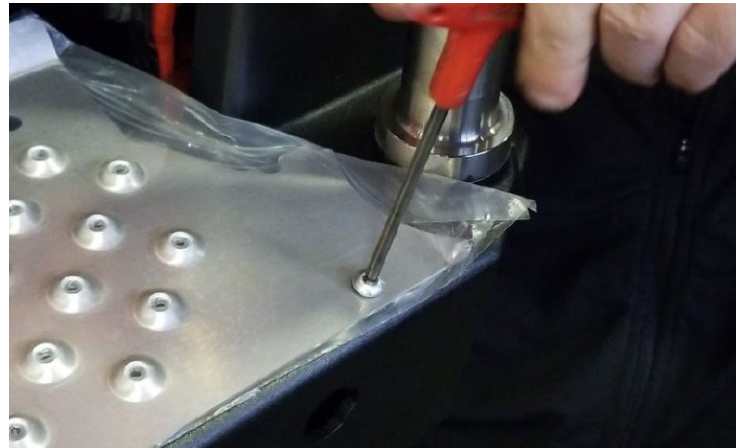
Attach cap onto spindle and hand tighten down.

You may need to rotate counter-clockwise while pressing down until you hear a small 'click' before threading and tightening the cap.



Next, we'll be attaching the tread plate onto the top of the bumper with provided allen head bolts and nuts.

Once all allen bolts are secure, go ahead and remove the scratch film from the tread plate.



Open arm till the pin drops into place. If it doesn't as shown to right, you'll need to go to the next step below.

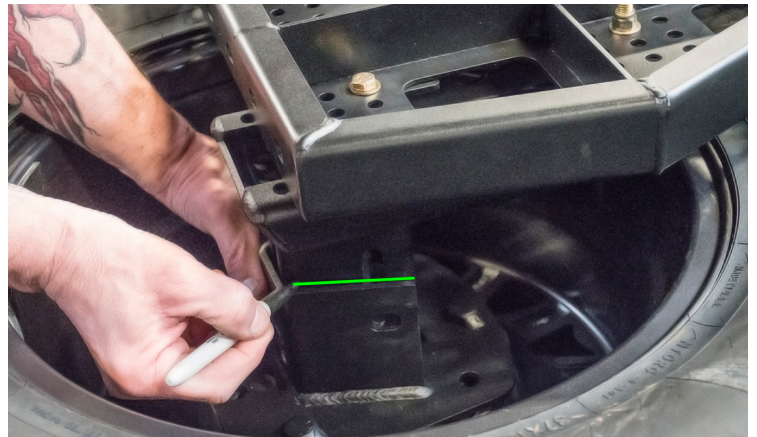


Adjust the button head bolts as shown until the pin drops into place. Then secure down again.



Swing Arm Tire Mount Install

Lay your spare tire on the ground and set the tire mount into place. Now set the arm on top of it, marking the height when the arm is flat across it.



Flip arm over and position your tire mount into position. Tighten into place where you marked your lines.

Once tire mount is secured to arm, you can now repeat the tire carrier install on page 6 and place the tire on the tire mount once the arm is secure.





LATCH HANDLE INSTALL

Please see latch system install guide that should be provided in box. If guide wasn't included, please visit the following address below which can be found under our installation section of our website at www.exp-one.com

http://www.exp-one.com/wp-content/uploads/2018/10/latch_install_v1.pdf