

INSTALLATION GUIDE

2014+ Ram 2500/3500 Rear Bumper





CONTENTS

2014 Ram 2500/3500 Rear Bumper 3

Disclaimer

Expedition One is not responsible for any damages to vehicle.
We always recommend professional assistance when
installing our vehicle products.

Included Hardware:

- (6) 1/2" Bolts
- (12) 1/2" Washers
- (6) 1/2" nylon locking nuts

Skill Level:

- 4/5 stars
- Cutting required

Remove license plate and pull out plastic clips. Unbolt with 15mm socket.



Unplug license plate lates on both sides from underneath stock bumper



Remove receiver plug wiring from back of stock bumper.



Using 15mm socket, undo the two bolts that are holding stock bumper on each side by the frame.



Remove stock bumper





Lay the expedition one bumper on flat surface and begin prep work by attaching the skid plate to the bumper. Use button heads and bolts provided.

Add locking pin bracket at this time as well, shown in the photo at top right.

Push license plate led light through holes as shown below. (Shown are front and back views.)



Remove receiver plug stock bumper and place into new bumper using screwdriver to 'pop' the brackets out as shown in photo.



After removing sensor plug wiring from stock bumper, use plastic covering and slide them into the new bumper.



Fish your wiring harness through the bumper to attach sensor plugs.



Attach sensor plugs to open ports



Using 10mm socket, remove bracket as shown to right that's on the end of the frame.



Using a cutting tool, cut along green line on your oem receiver hitch as shown in photos below on each side of vehicle.

Driver's Side



Passenger Side



Shown below is the final result from cutting.



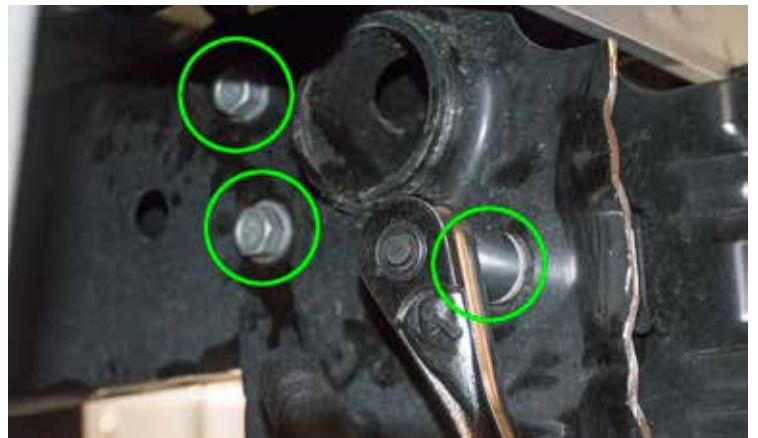
Using your preferred black, rust-resistant paint, spray the cut areas as shown below.



Place new internal mounting brackets into place as shown.



Using existing bolts, place them as shown in photo and secure in place.



Place new bumper into place



Attach your stock license plate bolts back into the slots and secure with 15mm socket. (Keep fairly loose for this step)



Using hardware provided, attach the 1/2" nuts, bolts and washers. (set of 3 on each side).



Once bumper is adjusted to your personal preference, begin tightening all bolts including license plate bolts.

Lay your spare tire on the ground and set the tire mount into place. Now set the arm on top of it, marking the height when the arm is flat across it.



Flip arm over and position your tire mount into position. Tighten into place where you marked your lines.



Using marine-based lithium grease, grease your bearings.



Place your greased bearing into the bottom of the arm as shown.



Now place grease seal as shown inside the bottom of the arm.



Place arm into position, holding the bearing/grease seal with hands, onto the spindle.



You will need to wiggle until it drops into place. You may also swing it back and forth a few times to get it to set properly into place.

Add your top bearing and drop it into the arm as shown.



Drop provided washer into place



Drop your large bolt into place and tighten down into place till its nice and tight. Then nudge it back a hair so it won't bind.



Repeat these steps for the other arm.



Open arm till the pin drops into place. If it doesn't as shown to right, you'll need to go to the next step below.



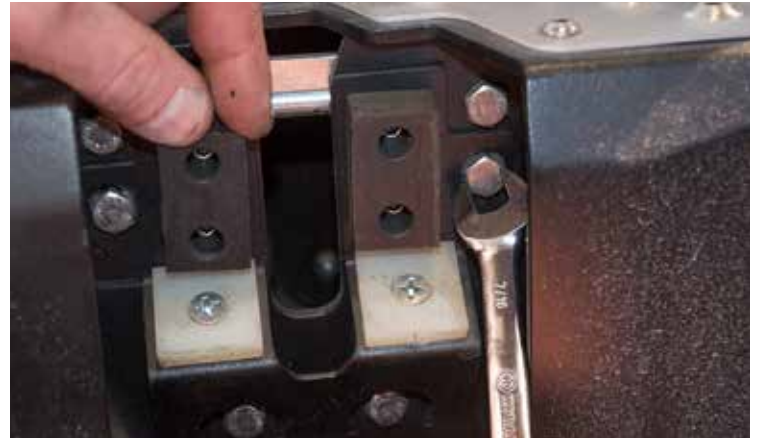
Adjust the button head bolts as shown until the pin drops into place. Then secure down again.



If handle needs to be adjusted, then these three bolts shown to right are the bolts you will need to adjust to do that.



Shown to right are the additional bolts for the bump stop that can be adjusted for proper latching.



Using anti-seize provided, paste it around the threaded area of cap.



Attach cap onto spindle and hand tighten down.





At this point, you can start mounting any of your mounting accessories and check that all wiring is connected and safely secured.