

INSTALLATION GUIDE

CAMERA MOUNT EXTENSION BRACKET





CONTENTS

Camera Extension Installation 2

Disclaimer

Expedition One is not responsible for any damages to vehicle.
We always recommend professional assistance when
installing our vehicle products.



Included Hardware:

- 8 1/4" clip nuts
- 12 1/4 button head bolts
- 2 small 1/4" button head bolts
- 4 1/4" nyloc nuts
- 2 1/4" rivet nuts
- 2 washers
- 2 LED pigtails
- 4 male 4 female connectors
- 18" of wire loom
- 16" of wire loom
- 4 terminal wire splicers

Skill Level:

4/5 stars (Professional install recommended)

Pre-Installation Preparations

Remove inner panel from door frame. There is a single bolt to remove and the rest are plastic clips you'll simply pull down on.



Plastic Peel Removal

Peel Plastic back to expose wiring and disconnect camera wiring



Rear Door Fascia Piece Removal

Remove the bolts as highlighted in the photo.



Rear Door Fascia Piece Removal (Continued)

Remove lights as shown and pop off the fascia piece upwards to expose wiring



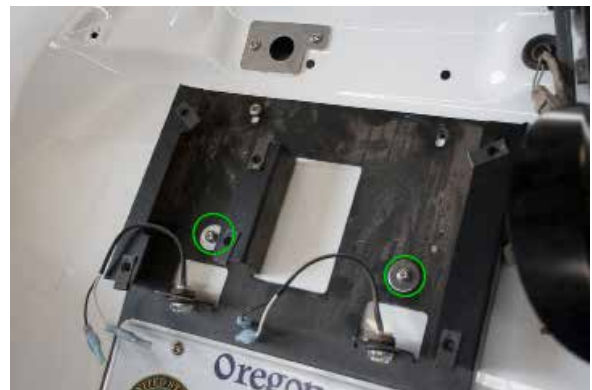
Door Spacer Install

Place bracket into place as shown and mark two holes for drilling at highlighted in the photo to the right. This allows for the camera wiring harness to wire through the door.



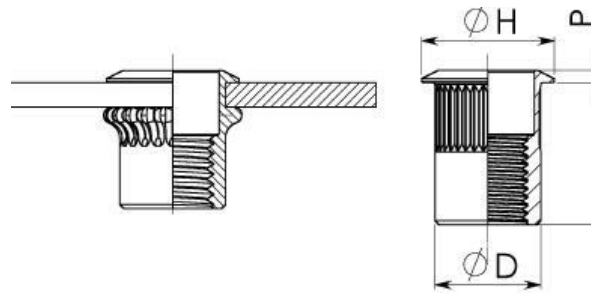
Camera Mount Back Plate Drilling Placement

Place bracket into place as shown and mark two holes for drilling at highlighted in the photo to the right.



Rivet Nut Hole Placement

Remove bracket and drill a 3/8" hole or slightly smaller. Bigger hole may prevent nut from compressing. Insert Rivet nut into hole and compress using a nut and bolt or rivet nut tool.



Stock Camera Mount Removal

Use small wrench (5/16" open ended wrench) as shown in photo to slide onto the plastic retainer to compress and slide it out to remove the camera housing. Photo shows it off the door just for demonstration purposes.



Wiring Harness

As provided with wiring kit, connect wire to wire and install camera into new bracket piece provided. Use paired gel-filled splices provided in kit to extend the wiring harness. Provided wire is a solid wire and does not need to be stripped. Camera leads are a stranded wire and will work best with 1/4" stripped off the end.



Drill Hole for Wiring Harness

Drill a small hole as shown highlighted in the photo to allow the left light wiring to be pulled and pushed through the hole to be wired in with the new wiring harness in previous step.



Camera Extension Bracket

Once wiring is completed, attach the new camera mount bracket into place and tighten all of the provided hardware.

Start up the engine and test to make sure both the lighting and camera work. Enjoy!

