



2010-2023 LEXUS GX460 BASE AND STC REAR BUMPER



PLEASE READ ENTIRE GUIDE BEFORE INSTALLATION

Recommended that you read this entire install guide before installation. Check that all hardware is present before starting or scheduling an install. This guide is supplemental to mechanical knowledge and ability. Anyone not familiar with automotive installation should seek professional installation.

IMPORTANT INFO/FAQ

INSTALLATION HELP

Please review terms and conditions for details

Recommended purchaser review Welcome Guide at time of purchase for details

Care & Maintenance and Install Guides available at www.exp-one.com/resources

We do our best to offer timely assistance with your installation questions however as most of our team members are primarily engaged in the manufacturing process and packaging processes, we do not currently offer a tech for on-demand calls and inquiries. For the more technical installs or installs that are time-sensitive in nature, we would recommend our customers seek out the services of professional shops with experience specific to aftermarket bumpers.. We are happy to make recommendations to you on shops familiar with our products in your area. We do our best to respond to installation questions within 24-48 hours of contact as much as possible. Long-distance problem assessment can be difficult, so photos and videos are often required for us to best assist you. We highly recommend your initial contact regarding installation questions include both close-up and full photos, detailed descriptions using our part descriptions as much as possible, and video. This enables us to better assist without having the ability to see the install difficulties directly and assist you as quickly as possible.

NOTE

Expedition One does not guarantee fitment with other aftermarket products, or reinstallation of take off OEM parts.

Expedition One is NOT RESPONSIBLE for damage to paint or powder coating, items assembled in error during installation or costs associated with install, and injury.

OEM manufacture model refreshes/updates, factory build location and suppliers may cause variations in fitment or installation and can not be verified, vehicle to vehicle .

EXPEDITION ONE
113 N. 700 W. BUILDING 5C BAY 1
OGDEN, UT 84404
INFO@EXPEDITIONONE.BIZ
801-627-2921 MON-FRI 0900-1700 MST

INSTALL LEVEL



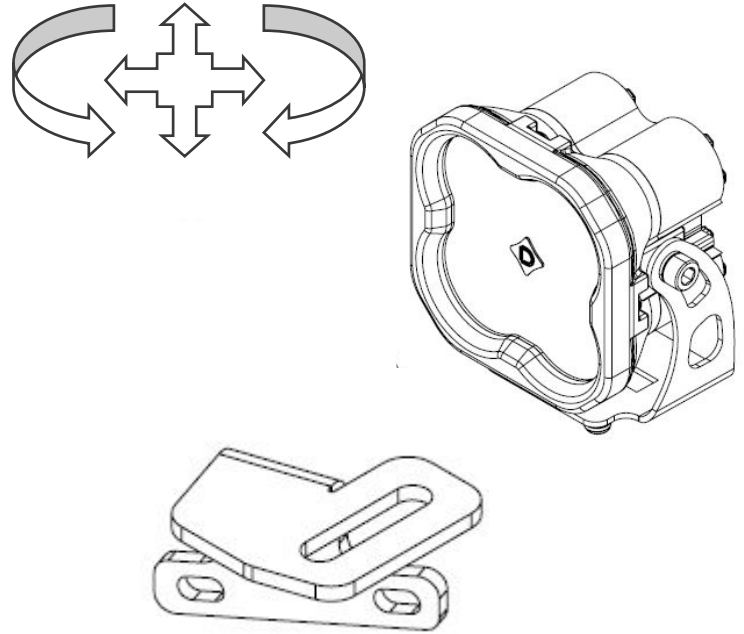
- | | | |
|---------|-------|--|
| 1 STAR | ★ | EASY - No tools required |
| 2 STARS | ★★ | BASIC - Requires standard tools, basic mechanical knowledge and understanding |
| 3 STARS | ★★★ | MODERATE - Requires standard tools. Some drilling and/or cutting. |
| 4 STARS | ★★★★ | ADVANCED - Requires speciality tools. Drilling, cutting, and grinding required |
| 5 STARS | ★★★★★ | EXPERT - Professional installation recommended. |

We always recommend professional assistance when installing our vehicle products. Always follow safety precautions including the use of safety gear and devices.

IMPORTANT INFO/FAQ

LIGHT PORTS + LIGHT BARS

To give you a wide range of options from various brands and designs, the light ports were designed to be as universal as possible. Not all mounts or designs will fit exactly and may require the use of shims, spacers, removal of housings or covers, different light manufacture mounts or hardware to mount. Reuse of OEM light is limited to select bumpers and will come with provided hardware to reinstall. Specific mounts or options if available will be listed at time of purchase and provided with hardware. Bolt-on light ports or mounts will mount as per the instructions. It is recommended that lights be purchased with the bumper in hand to gain the best fitment. We DO NOT manufacture the lights, provided wiring, or instructions on how to connect to the OEM harness. Seek professional installation on hybrid or electric vehicles



EXAMPLE SHOWN - LIGHT PORTS WILL VARY

AFTERMARKET or OEM PRODUCTS

We DO NOT guarantee fitment or installation of any aftermarket, third party or OEM parts, accessories, or hardware. This includes items such as lighting, winches, skids, lifts, suspension, and accessory mounts. Access to all brands, manufactures and country of origin specific parts is limited or impossible during the product development stage and subsequent new or modified revisions of said products including OEM design changes or refreshes. It is recommended you have the product in hand and installed before modifying with other aftermarket parts. Consult other sources to gain any first hand knowledge of other products others have installed.

EXAMPLES

The illustrations, diagrams, and examples shown in this guide are provided for reference purposes only. Actual installations may vary depending on model, configuration, or product updates. Drawings, visuals, and component layouts may differ from what is shown, but the installation principles and procedures remain the same.

IF STC - USE IN CONJUNCTION WITH GX 460 STC GUIDE

Swing arm specific items feature a separate guide related to the installation of arms and common features. Review these guides for any pre planning or items that will need to be installed or in conjunction with the bumper install. Items listed below that may have limited access once installed on the vehicle.

- GX460 STC SUPPLEMENTAL

IMPORTANT INFO/FAQ

HARDWARE

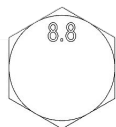
Please review for details and installation. Figures or data may vary. Leave all accessible hardware loose for installation and tighten all hardware after everything is installed on the vehicle. Check and tighten all hardware after the first 100 miles and/or after off roading.

Some hardware locations do not require being tightened to spec due to there design, location or material attachment (including rubber, plastic, and aluminum). Over tightening may break or damage parts. Torque spec may vary, amounts listed are generic.

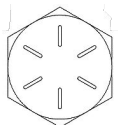
HARDWARE		TORQUE SPEC	
SIZE	SOCKET	GR5 / 8.8	GR8 / 10.9
#8	1/4"	X	
#10	5/16"		
1/4"	7/16"	6-8	9-10
5/16"	1/2"	13-14	18-20
3/8"	9/16"	23-26	33-37
7/16"	5/8"	37-41	52-58
1/2"	3/4"	57-64	80-90
9/16"	13/16"	82-91	115-129
5/8"	15/16"	112-118	159-180
3/4"	1-1/8"	200-223	282-315
1"	36MM	X	
M6	10MM	9-10	13-15
M8	13MM	22-24	32-35
M10	15MM	44-49	64-72
M12	18MM	76-83	112-123
M14	21MM	102-112	165



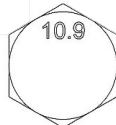
GRADE 5

















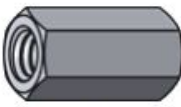
CLASS 8.8



GRADE 8



CLASS 10.9

TYPES OF HARDWARE		
		
HEX CAP BOLT	WASHER	NYLOC NUT
		
BUTTON HEAD BOLT	FENDER WASHER	HEX NUT
		
CARRIAGE BOLT	INTERNAL TOOTH	JAM NUT
		
SOCKET CAP BOLT	CLIP NUT	ACORN NUT
		
FLAT HEAD SCREW	RIVET NUT	COUPLING

NOTE

Extra hardware may be left over due to model or option specific items that may not be required for the install. OEM hardware may vary in style or socket size from shown.

TIGHTEN ALL HARDWARE AFTER EVERYTHING IS INSTALLED ON THE VEHICLE. CHECK AND TIGHTEN ALL HARDWARE AFTER THE FIRST 100 MILES AND AFTER OFF ROADING. CHECK REGULARLY

HARDWARE

BASE AND STC BUMPER

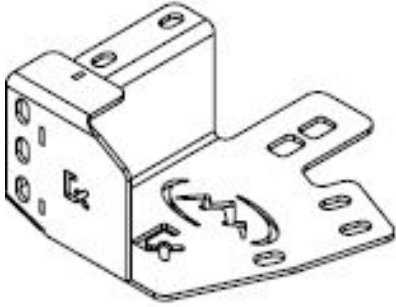
1/4" – 20 X 3/4" BUTTON HEAD	4
1/4" – 20 CLIP NUT	4
3/8" - 16 X 1" BUTTON HEAD	2
3/8" - 16 X 1-1/4" HEX CAP	4
3/8" - 16 NYLOC NUT	4
3/8" WASHER	14
1/2" - 13 X 1-1/2" HEX CAP	18
1/2" - 13 X 4-1/2" HEX CAP	2
1/2" - 13 NYLOC NUT	16
1/2" WASHER	40
M8 - 1.25 X 30MM HEX CAP	6
M12 - 1.25 X 45MM HEX CAP	4
SENSOR BEZEL	4

HARDWARE

BASE AND STC BUMPER

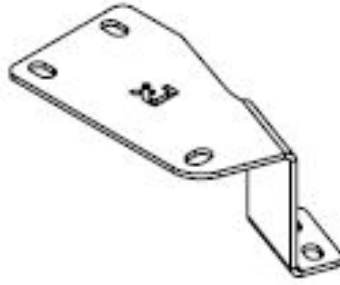
MOUNT BRACKET 1

2



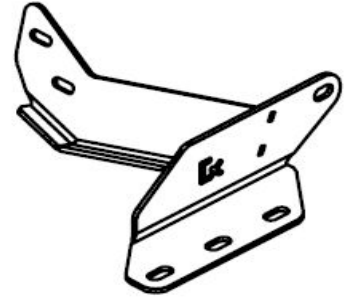
MOUNT BRACKET 2

2



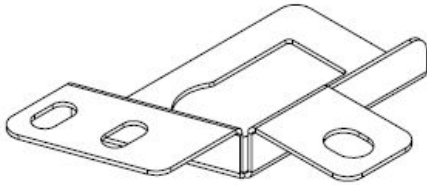
WING MOUNT BRACKET

2



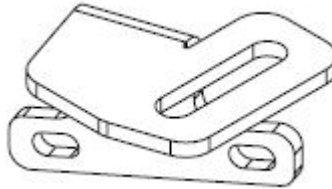
HITCH BRACKET

1



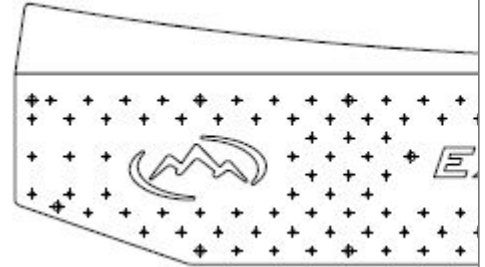
LIGHT TAB

2



TREAD PLATE

1



WELDED NUT - FLAT

2



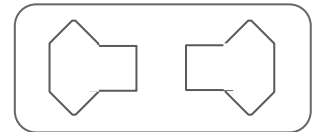
WELDED NUT - BENT

2



2 HOLE SPACER

2



1 – REMOVE OEM BUMPER HARDWARE

Remove the rear bumper OEM hardware as circled below for each side of the vehicle.



Underside panel and hardware.



Wheel well panel (shown Removed) and hardware



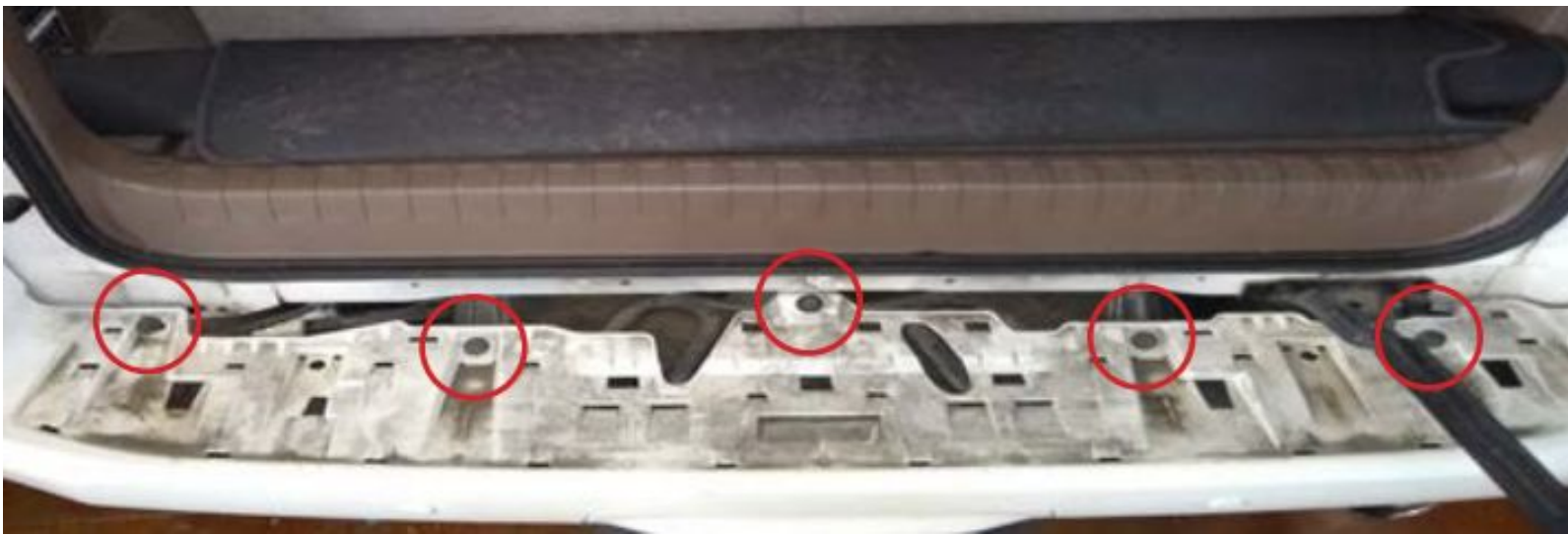
Hardware above the hitch receiver.



Driver's side of tailgate opening



Remove the rear tread plate by pulling at the corner and away from the vehicle.



Remove hardware underneath tread plate



Disconnect the parking sensors from the bezels. Be care to not break any clips or parts of the bezel as they will be reused in the new bumper. Remove the bezels once the bumper is removed in step 2



Disconnect all wiring harness connectors

2 – BUMPER REMOVAL

Check for any remaining hardware connecting the bumper. Remove the bumper by pulling it away from the corner near the wheel wells.

3 – BUMPER TRIMMING

Measure 7" from the top of the bumper corner and mark the location. Use this point to create a line around the bumper to the rear lights and tread plate area. Mask the cutting line with tape for a guideline and to protect the edge during cutting



2010-2013 REAR



2014-2023 REAR



2010-2013 REAR.

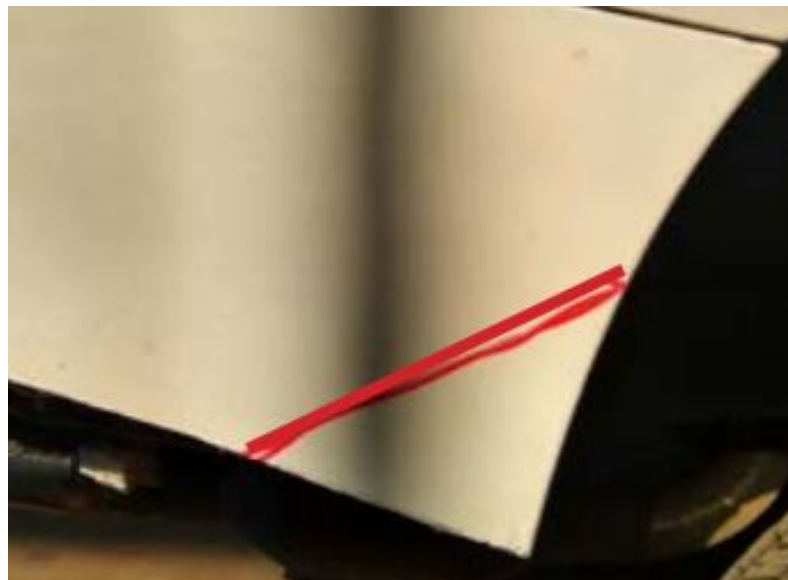


2014-2023 REAR



Once the full rear line is cut, it is recommended that the area underneath the lights be trimmed closer as shown to allow room for the upper corners of the new bumper.

Measure as shown from the top edge of the wheel well corner to 4". From this point draw a angled line shown below right to the bottom edge. Cut and remove this triangle section from the bumper, repeat for the other side.



4 – FRAME MODIFICATION

The mount area shown below will need to be removed from both sides of the rear cross frame. Remove the piece and finish the area with paint to prevent rust. Next unbolt the hitch receiver plug from the hitch to provide access and room to mount brackets.



5 – BRACKET CUT OUT

With the bottom of the bumper portion cut, remove any foam remaining on the underside for test fitting. Place the rear bumper brackets as shown (step 7) on the rear cross member, and loosely mount with 1/2" hardware if needed. Once the brackets are in place, reattach the bumper on the vehicle and trace a section around the bracket (circled). Repeat this step for the other side and remove the bumper to cut out the sections.

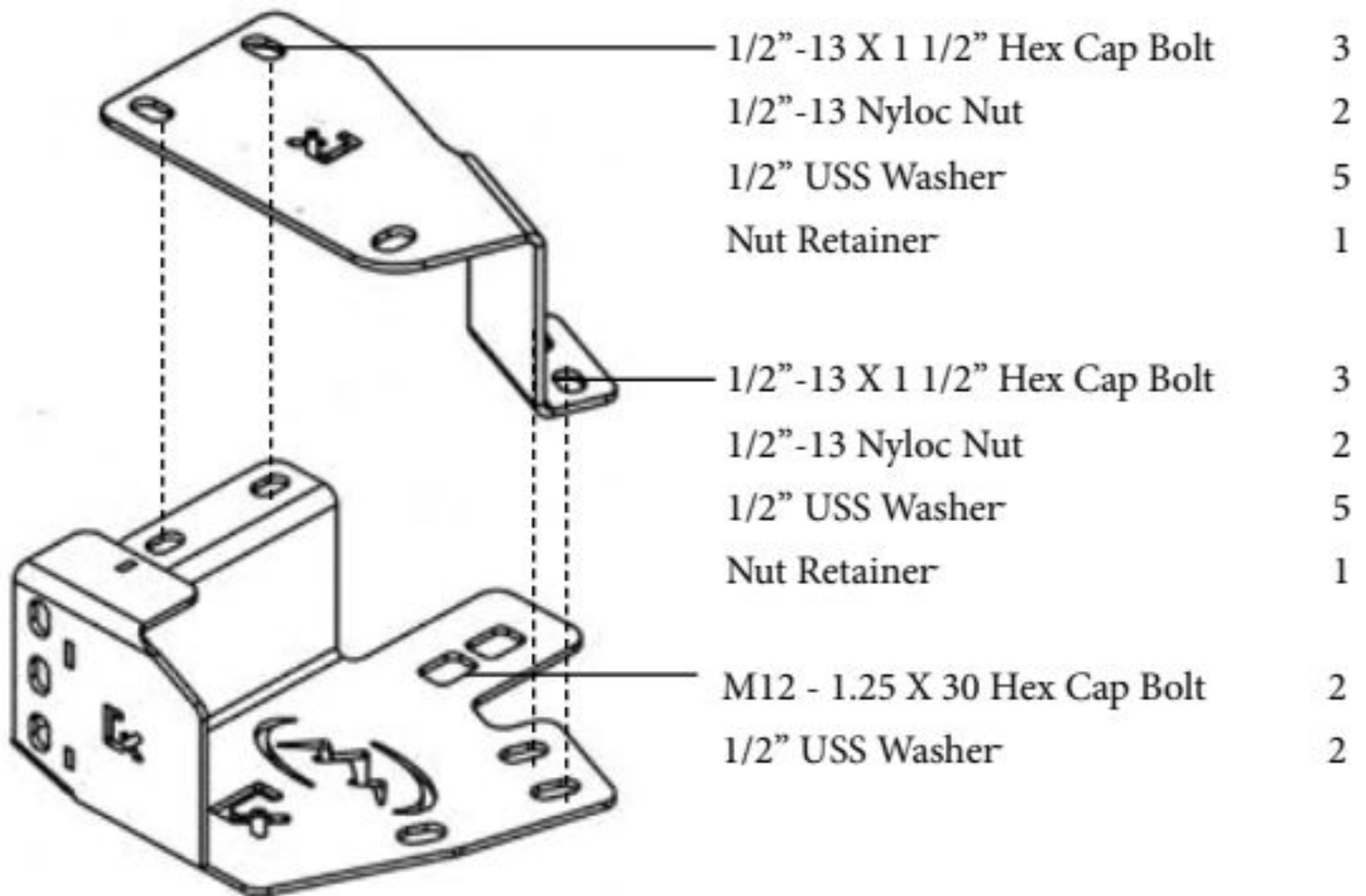


6 – FRAME MODIFICATION

Remove the plates located under the cross member above the hitch receiver. Also remove the tow hook on the drivers side and hardware on both sides from the frame location.



7 – BRACKET MOUNTING



Attach mounting brackets 1 and 2 as shown to the ends of the rear cross member. Remove hitch plug from OEM mount and insert into provided bracket for attachment to driver's side bracket. Mount using the provided hardware. Leave all hardware loose for adjustment.



If using the factory trailer hitch use the provided two hole spacer when mounting the rear mounting brackets to the underside of the frame.

Note: Some hitch variations are possible and may not require the spacer.



8 – OEM BUMPER INSTALLATION

With the brackets mounted reattach the OEM bumper. Mount all hardware on interior opening

Before reattaching the interior tread plate, trim along the first ridge as shown for the entire tread plate. Once trimmed reattach the tread plate and plastic trim.



9 – BUMPER TREAD PLATE

Attach the tread plate to the bumper before mounting to the vehicle. Start from the center and fatten the tread plate out as you work towards the ends while mounting. Leave hardware loose while installing, only tighten once all tread plate hardware is in place.

10 – WIRING HARNESS

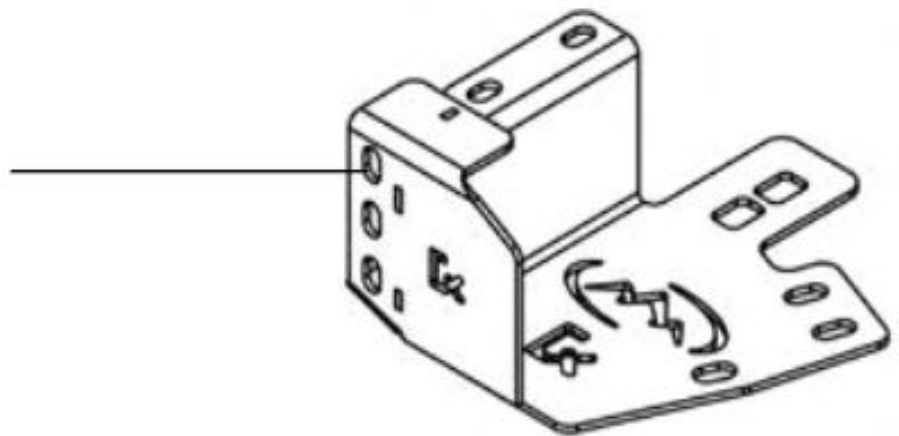
Reinstall the wiring harness into the new bumper. Place all wiring out of the way of mounting points and hardware locations. Check that the wiring loom connectors match there original points of connection per each side of the vehicle. Reattach all bezels and sensors. When using the provided replacement rubber bezels use WD40 and align the fat edge directional to the pointed surface when fitting.

11 – BUMPER MOUNTING

Mount the bumper using the hardware shown. Leave all hardware loose for adjustment. Make sure the bumper tread plate slides over the original tread plate panel and bumper when installing

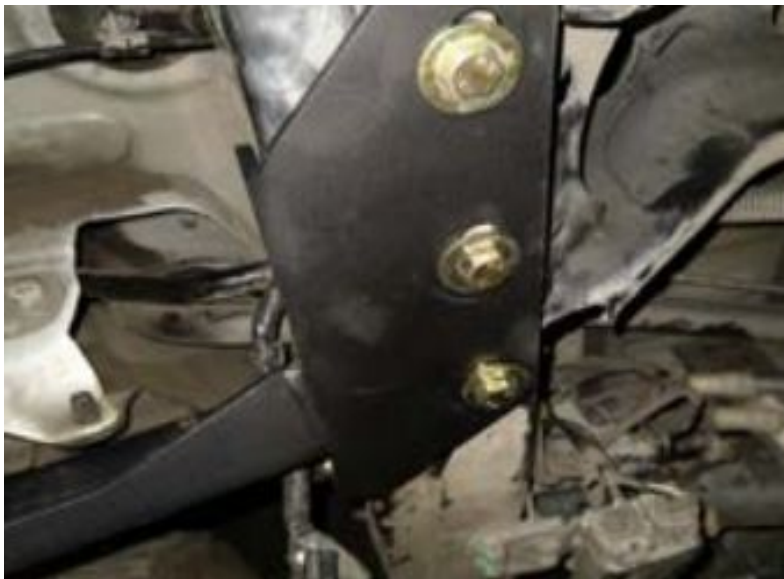


- | | |
|--------------------------------|---|
| 1/2" -13 X 1 1/2" Hex Cap Bolt | 3 |
| 1/2" -13 Nyloc Nut | 3 |
| 1/2" USS Washer | 6 |



12 – WING BRACKET MOUNTING

With the bumper in place mount the wing brackets near the wheel well as shown. Mount using the hardware listed. 1/2" hardware will mount through the frame rails and may require removing covers or caps over the hole locations. Leave all hardware loose for adjustment.



1/2" -13 X 4 1/2" Hex Cap Bolt

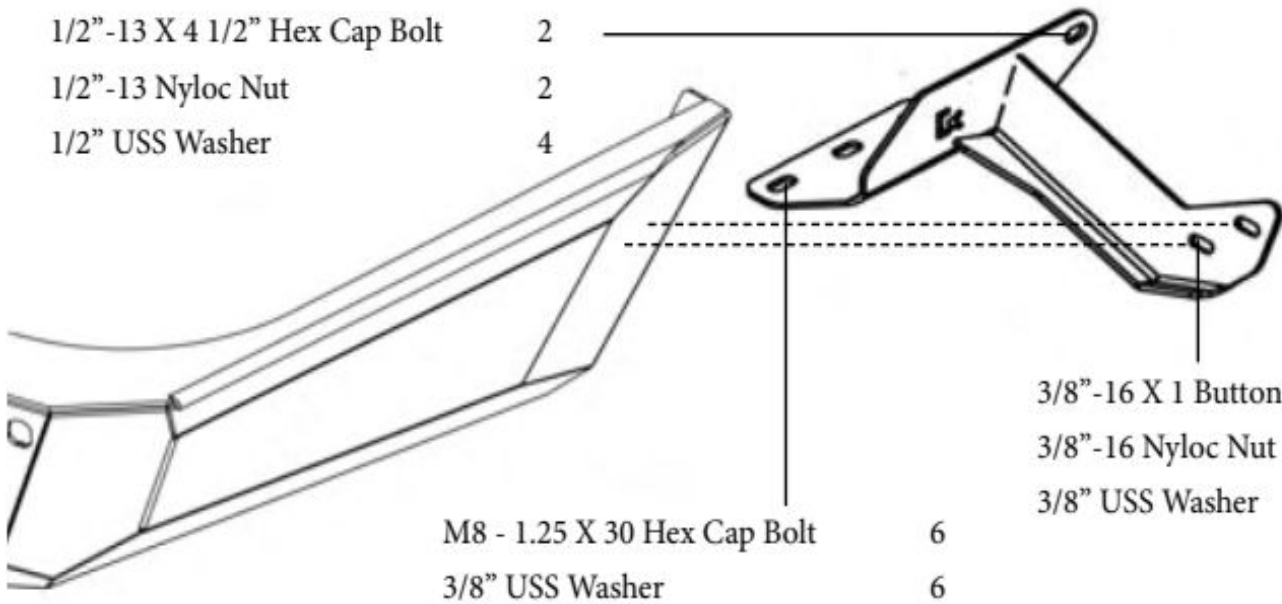
2

1/2" -13 Nyloc Nut

2

1/2" USS Washer

4



M8 - 1.25 X 30 Hex Cap Bolt

6

3/8" USS Washer

6

3/8" -16 X 1 Button Head Bolt

4

3/8" -16 Nyloc Nut

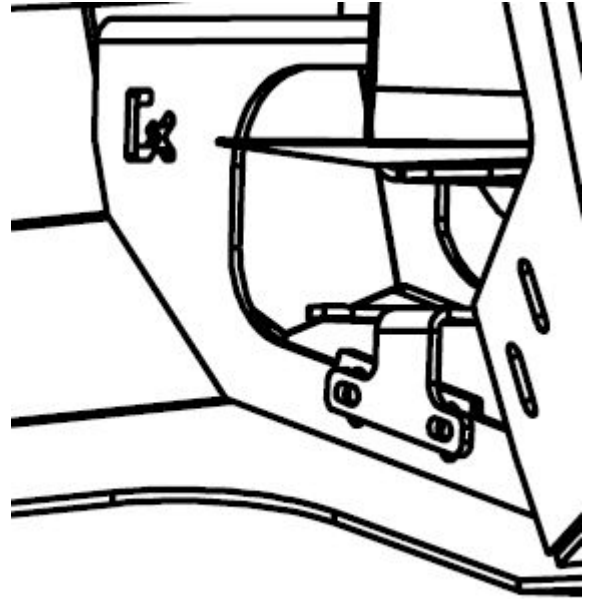
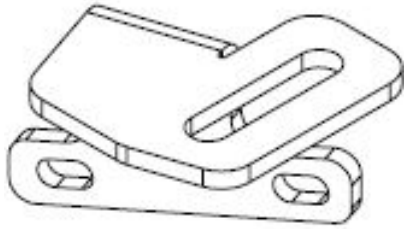
4

3/8" USS Washer

4

13 – LIGHT TABS

Mount the light tab to the light port area using the provided 1/4" hardware. See light ports guide for details



14 – TIGHTEN HARDWARE

Adjust the bumper to its desired location and TIGHTEN HARDWARE. Check that all hardware is tightened including all brackets and mounting locations. Reconnect the parking sensor wiring harness and other connections to the vehicles electronics and secure all loose wiring. Check that everything is working and adjust if needed before driving on the road.

TIGHTEN ALL HARDWARE AFTER EVERYTHING IS INSTALLED ON THE VEHICLE. CHECK AND RETIGHTEN ALL HARDWARE AFTER THE FIRST 100 MILES AND AFTER OFF ROADING. CHECK REGULARLY AFTER EXTENDED OFFROAD USE