

# INSTALLATION GUIDE

## Mule Ultra Rack





# CONTENTS

Tundra Mule Ultra Rack ..... 3

Disclaimer

Expedition One is not responsible for any damages to vehicle.  
We always recommend professional assistance when  
installing our vehicle products.

Included Hardware:

- (64) 1/4" Button Head Bolts
  - (64) 1/4" Nuts
- (38) 5/16" Button Head Bolts
  - (38) 5/16" Nuts
  - (6) Load Bars
  - (12) End Caps
  - (6) Sleeves
- (6) 5/16" Button Head Long
  - (6) 5/16" Nuts
  - (8) Riv Nuts
- (8) Rectangle Spacers
- (8) Round Spacers
  - (8) 5/16" Bolts
  - (8) 5/16" Washers
  - (8) 5/16" Clip Nuts

Tools:

- 1/2" Open Box Wrench
- 3/16" Open Box Wrench
- 5/32" Allen Wrench
- 3/16" Allen Wrench

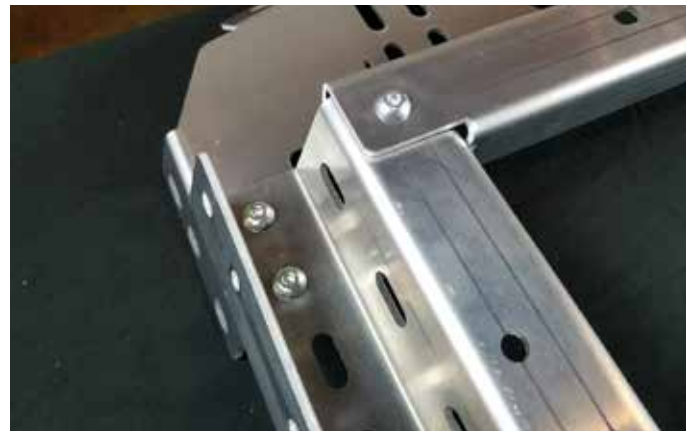
Skill Level:

2/5 stars (Some drilling required)

**ATTENTION:** When assembling the Mule Ultra Rack, remember to hand-tighten all bolts relatively loose until the very end of the install. This allows everything to fit into place before everything is tightened down.

Rack Assembly Installation:

Lay out front and side support braces as shown with provided 5/16" bolts and nuts. (see photo below)



Attach rear reinforcement brace as shown with 5/16" bolts. Repeat on both sides and keep bolts loose.

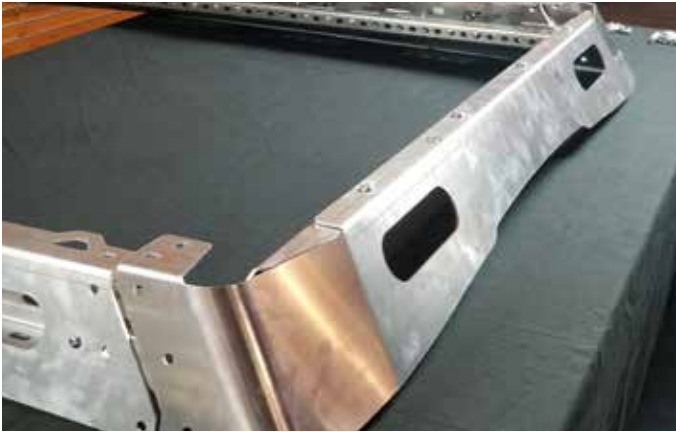


Lay out side fascia pieces and attach with 1/4" bolts (remember to hand tighten but keep loose).

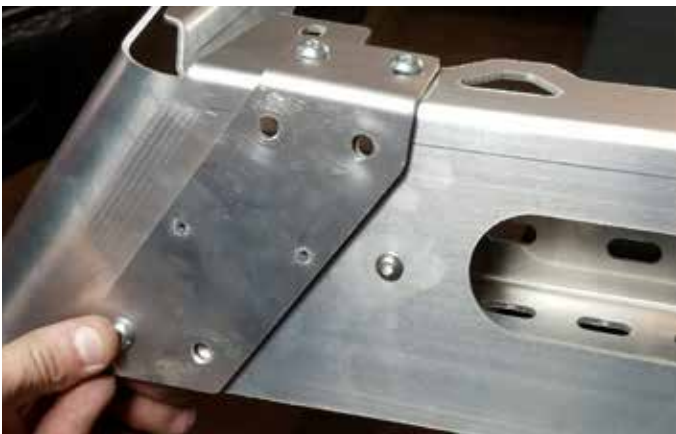
Shallow angle faces towards front end of roof rack as shown in bottom right photo!



Attach rear fascia as shown with 5/16" bolts and nuts.



Next attach rear corner connectors with 5/16" bolts shown in photo below. (remember to hand tighten but keep fairly loose!)



Make sure not to put any bolts in the holes pointed at below!

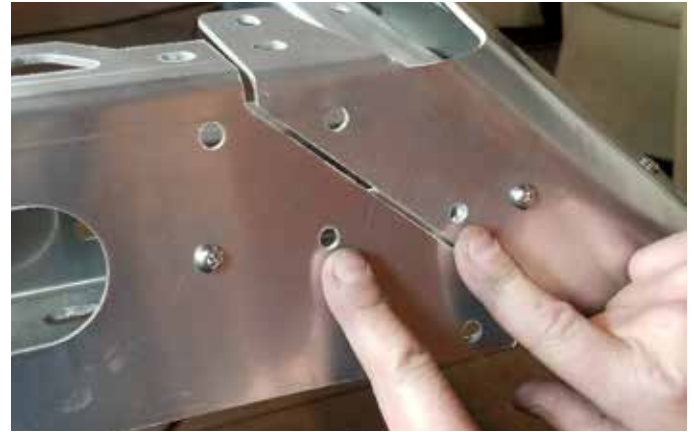


Attach front fascia piece shown bottom left photo along with a single spacer piece for each hole.

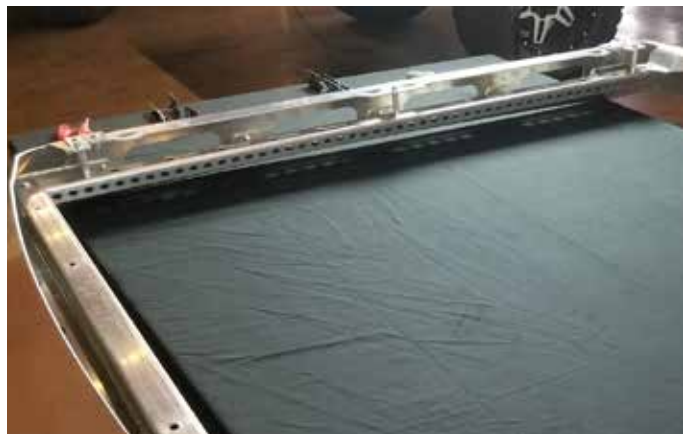
NOTE: If you bought fascia with light bar cutout, we recommend installing light bar prior to installing front fascia to make things easier.



Attach front corner connectors as shown with 5/16" bolts and nuts, remembering not to place any bolts in the holes pointed at in image below. (hand tighten bolts but keep relatively loose)



Next, attach reinforcement spacers as shown on all 6 hole locations with provided bolts & nuts. There are three mounting hole locations on each side.





Next, assemble load bars with provided end mounts using nuts and bolts. Keep hand tight but loose.



Flip roof rack on its back and attach load bars into desired locations as shown in photo. Using provided nuts and bolts, you may begin tightening down each load bar with two bolts/nuts for each side of load bars as shown.



Flip over roof rack after all load bars are tightened down with tools and begin tightening all other rack bolts to prepare to mount onto vehicle.

### Mount Installation

Attach clips onto support brackets as shown in photo to right. Also shown is where the bolts go when mounted to roof.

Remove stripping on each side of vehicle and cut a small portion of it to allow fitment for mount as shown below.



Peel off and place provided 3M strips, covering the holes as shown.



Place the mount back into place and push the bolts through the holes and 3M tape.

\*NOTE\* - when placing mount brackets, be sure to slide all 4 mounts towards center of vehicle before completely tightening down bolts. This helps provide clearance from the body of vehicle and the roof rack.

Begin tightening down both bolts as shown. Repeat these steps for all mount brackets. Place weather stripping back on, making sure you had cut a small section of it shown in previous page.



Once all mounts are put into place and tightened down, carefully place the roof rack onto the roof with a friend to line up with the mount brackets. Begin placing the provided bolts and washers into each hole and tighten down.



Your all set!

If you have any further questions, please email us at [info@expeditionone.biz](mailto:info@expeditionone.biz) and we'll be happy to help!