



2007 Tundra Rear Bumper

Level Of Difficulty

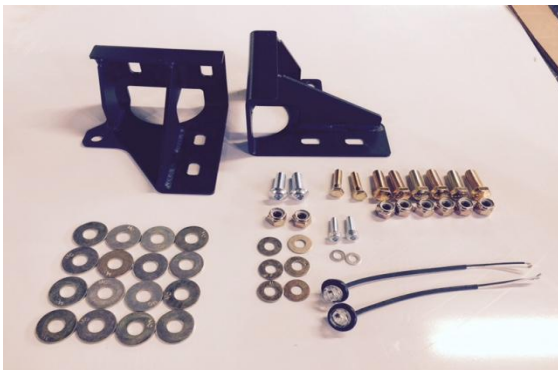
Out of 5 stars this install is a 1-2 Star Rating

Install Difficulty Key:

1. All needed tooling included in shipment
2. Some tools required assemble
3. Some drilling required
4. Some drilling, light welding and grinding required.
5. Heavy fabrication required

Needed Tools

- Standard and Metric Socket set
- Standard and Metric Wrenches
- Hex Keys/Allen Keys (wrenches)



Items in Kit

Hardware Kit: Quantity Item

- (2) ½"x13x1.5" Stainless Steel Button Head Bolts
- (6) ½" SAE Grade 8 Zinc Plated Flat Washers
- (2) ½"x13 Grade 8 Zinc Plated Nylon Lock Nuts
- (16) ½" USS Grade 8 Zinc Plated Flat Washers (use as spacers/shims)
- (2) 3/8"x 16 x 1.5" Grade 8 Zinc Plated Hex Cap Bolts
- (2) 3/8"x 16 Grade 8 Zinc Plated Nylon Lock Nuts
- (4) 3/8" USS Grade 8 Zinc Plated Flat Washers
- (2) M6 Zinc Plated Socket Cap Bolts
- (2) M6 Flat Washers
- (2) License Plate lights
- (4) male wire connectors
- (4) female wire connectors

Remove stock bumper

- First, unplug all wires and any sensor plugs attached to the bumper including license plate lights. Now remove the tailgate (this step is not required but it will make your install easier).
- Next, pull the plastic corners on the bumper off.
- Remove plastic center section and remove stock steel bumper using a 13mm wrench or socket.
- Now the stock bumper should be removed and you can begin to install your Expedition One bumper.



Drill out holes

- Drill out the pre-existing holes in the receiver hitch assembly where the bumper was mounted. The hole needs to be big enough to accommodate a 3/8" bolt...we recommend you open the hole up to approx. 7/16"



Mount brackets

- Locate the internal mounting brackets on the oem receiver hitch assembly (pictured to the right). It shares two oem mounting locations; this requires removal of 2 oem mounting bolts (pictured at right) in order to mount the bracket.
- Replace the stock bolts once you have your bracket properly positioned, being sure to leave them loose for adjustment later.
- In the lower mounting hole of the bracket, utilize 1, 1/2" bolt, 1 nyloc nut, and 2 USS flat washers (one washer on the bolt side and one on nut side). Repeat this step on the other side of your vehicle.



Begin to Mount E1 bumper

- Next, position your Expedition One bumper. Your bumper should slide in place and rest on the oem receiver hitch assembly.
- In the 2 rectangular holes on the top of the bumper, install 2 M6 socket cap bolts with corresponding washers. Keep loose.

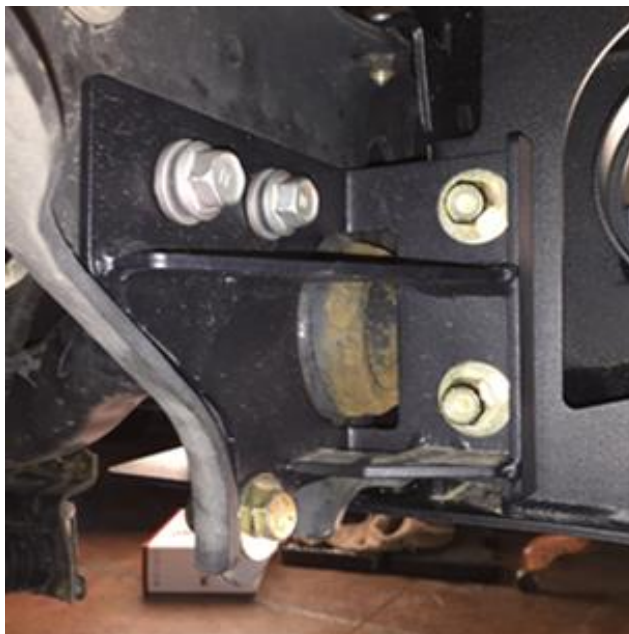


- Install the 3/8" hex cap bolt with corresponding washers and nylocs (again using washers on both the nut and bolt sides), in the holes previously drilled out. Again, keep all nuts and bolts loose.



Finish Mounting & Tighten

- Join the mounting brackets and bumper using 4 ½" bolts and corresponding nyloc nuts with USS flat washers on nut and bolt sides.



- Adjust the bumper as desired, then tighten all your bolts. We recommend tightening the top 2 socket cap bolts utilizing a hex key first...this will help the bumper from shifting as you tighten the rest of the bolts. It is also recommended you tighten the oem bolts on the mounting brackets last.



- In the center step of the bumper there are 2 holes for ½" button head bolts. These bolt locations are mainly used for the optional winch mount and are not required for regular use; however, if you desire to install the bolts we recommend using the additional USS flat washers as shims between the bumper and the factory receiver hitch assembly.



License Plate Lights

- Clip ends from OEM wiring. Expose some wire on the clipped ends and insert into round end of electrical connectors. Use either both male or both female on OEM wires and the other set on the wires of the provided license plate lights. Crimp to secure wires in the connectors and insure electrical contact.
- Connect the OEM wire to the pigtail wire with the slide-in connectors.
- Press pigtail into back of light and test. If the light doesn't turn on when set to on, switch the wires.
- Locate the lights in the license plate area in the center of your E1 bumper in provided holes. Pay attention to the markings on your light for proper orientation. In some cases you may require some lubricant (liquid soap is a good option).
- Lights for the rear ports can then be installed per manufacturer instructions
- **If you have questions please email us at info@expeditionone.biz**

